

February 2026 Monthly Construction Status Report

Updated: 03.10.2026



Segment A1-A2 - Final Pipe

WHCRWA Ongoing Construction Projects

Segment B1-B2

3 MILES OF 84-INCH DIAMETER AND 8 MILES OF 96-INCH WATERLINES FROM WEST OF BRITTMOORE ROAD TO WEST OF I-45

Segment B3

4.4 MILES OF 96-INCH DIAMETER WATER LINES FROM WEST OF I-45 TO THE SOUTH SIDE OF HOPPER RD. VIA TUNNEL

Central Pump Station

CONSTRUCTION OF A CENTRAL PUMP STATION THAT WILL RECEIVE WATER FROM THE RE-PUMP STATION AND THEN TRANSFER WATER TO MUDS

Segment A1-A2

11 MILES OF 96-INCH WATER LINE FROM HOPPER RD. TO THE WHCRWA METER STATION NEAR THE NEWPP

RePump Station

CONSTRUCTION OF A 160 MGD REPUMP STATION FACILITY INCLUDING TWO 10 MILLION GALLON TANKS

NorthEast Meter Station

CONSTRUCTION OF A METER STATION AT COH/WHCRWA INTERFACE

Kinder Morgan 1, 2, 3, 4, 5, & 6 - (6 Projects)

6 MILES OF 66-INCH AND 1,300 LF OF 84-INCH WATERLINE FROM SEGMENT C1 CONNECTION TO THE I-10 METER STATION

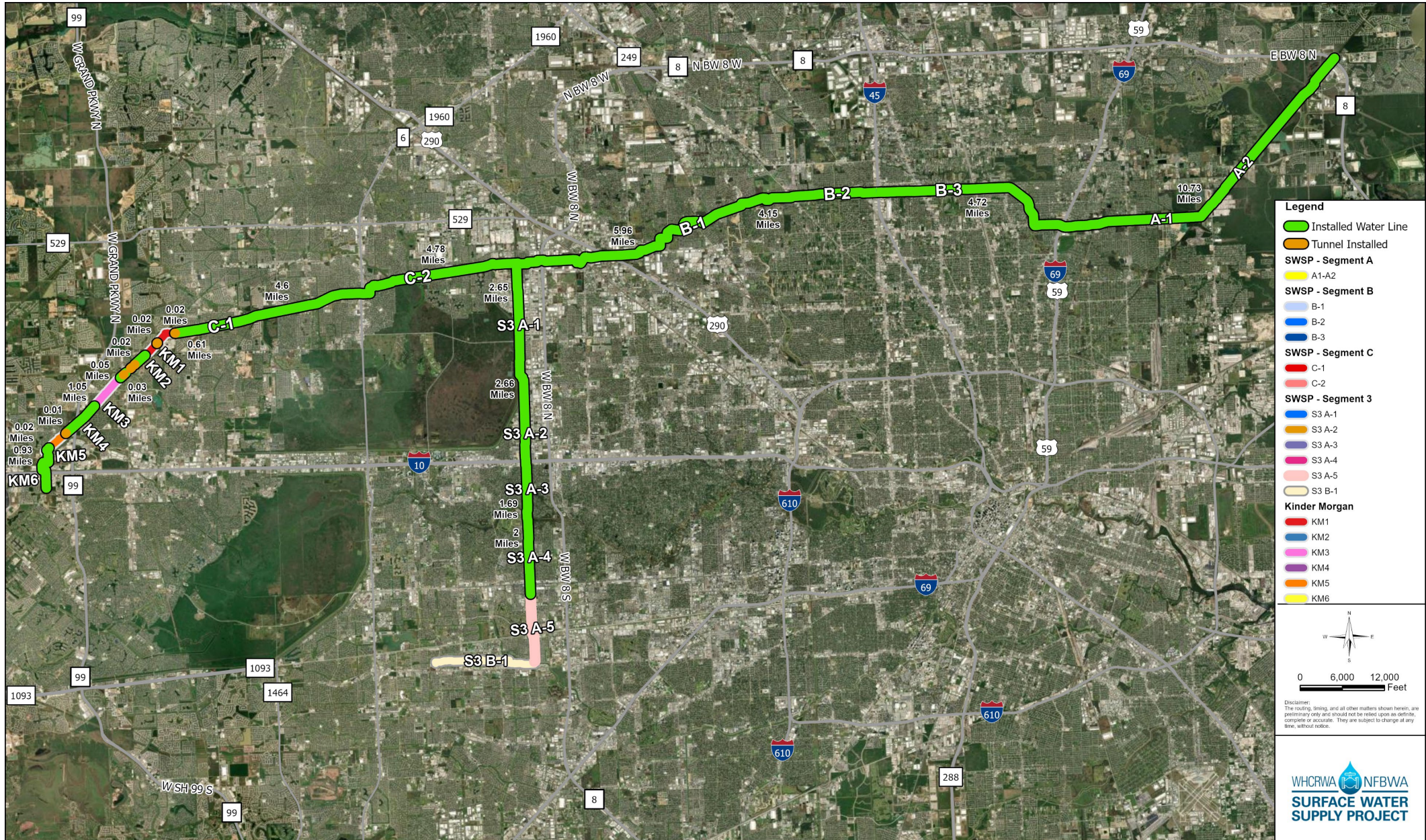
I-10 Meter Station

CONSTRUCTION OF A METER STATION AT THE NFBWA INTERFACE

CIP Projects

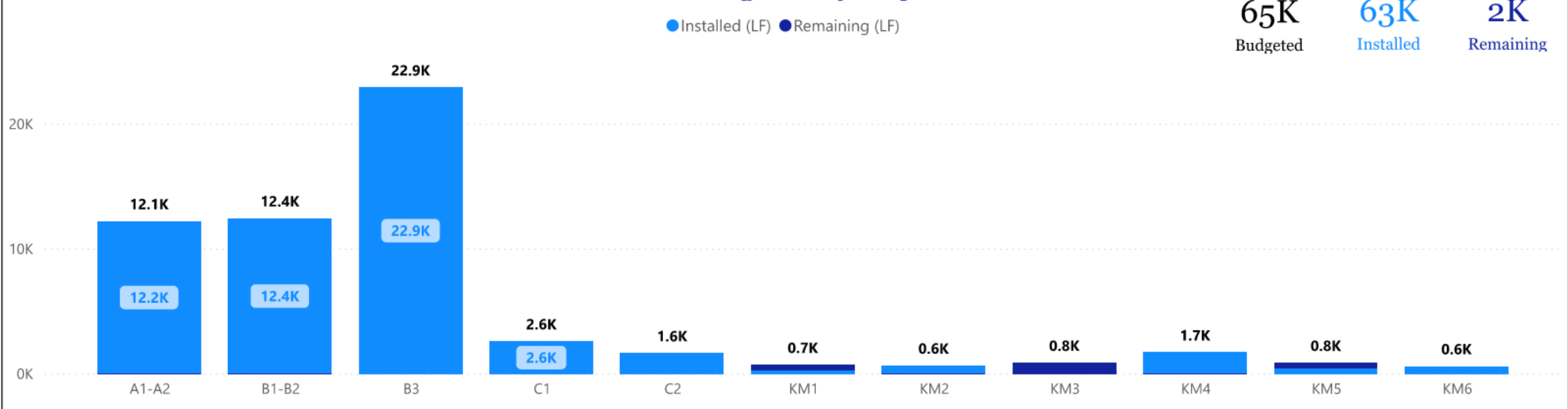
CONTRACTS 51, 63, 64, & 65

Current SWSP Construction Projects Overview

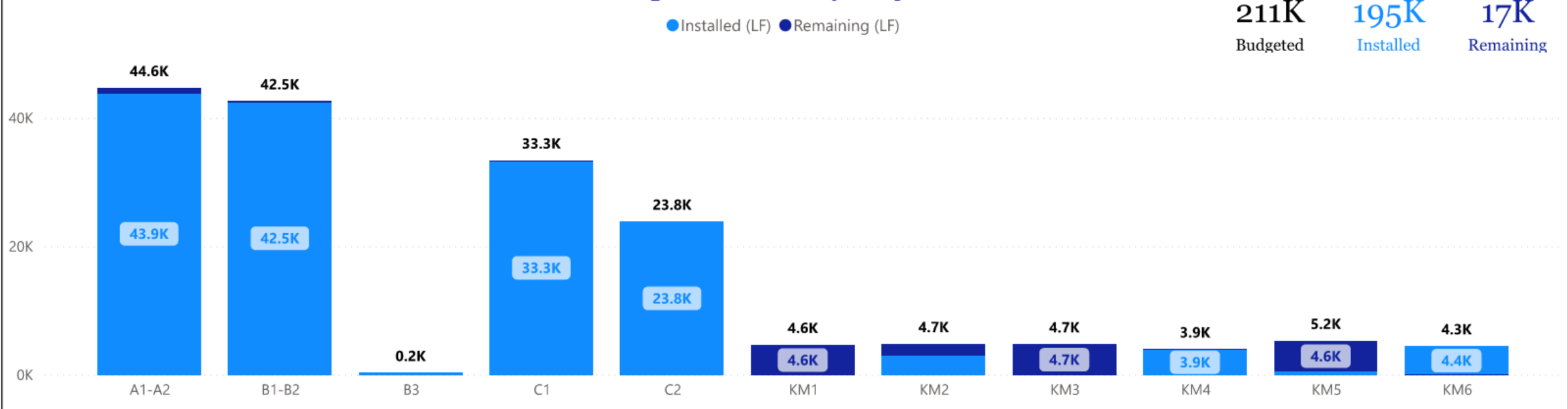


SWSP - Construction Overview

Tunneling (LF) by Project

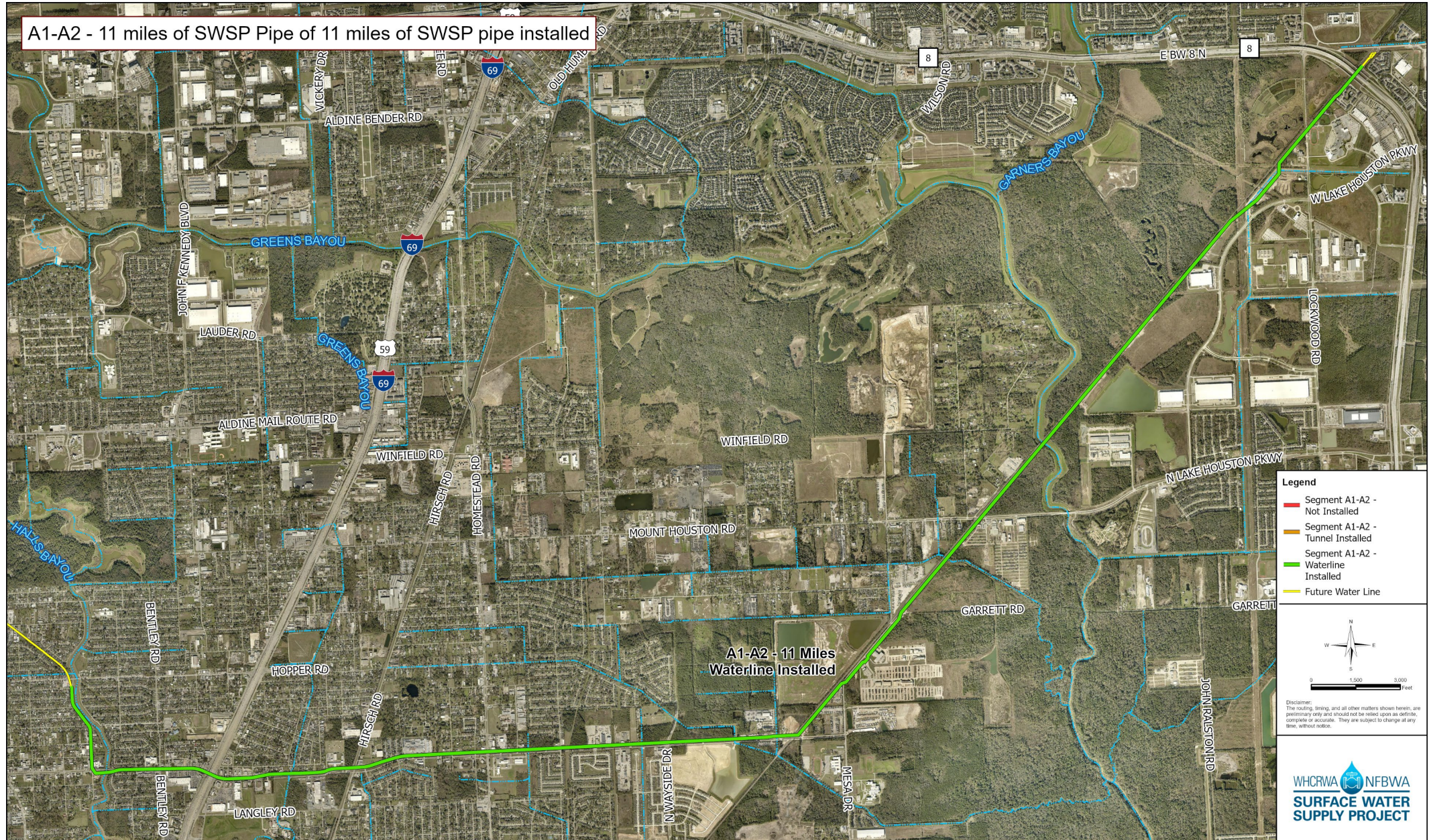


Open Cut (LF) by Project



Construction Progress – Segment A1-A2

A1-A2 - 11 miles of SWSP Pipe of 11 miles of SWSP pipe installed



A1-A2 - 11 Miles Waterline Installed

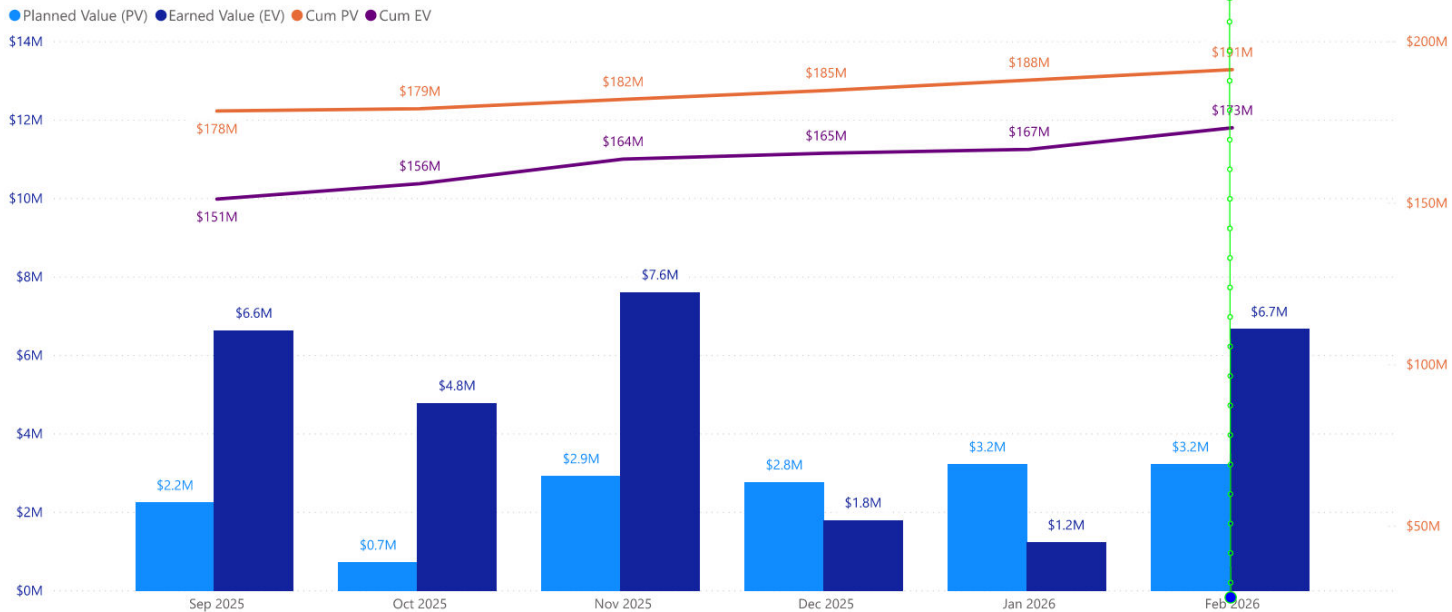
Project Name

A1-A2

9/25/2025

2/25/2026

Segment A1|A2



SWSP Segment A1-A2



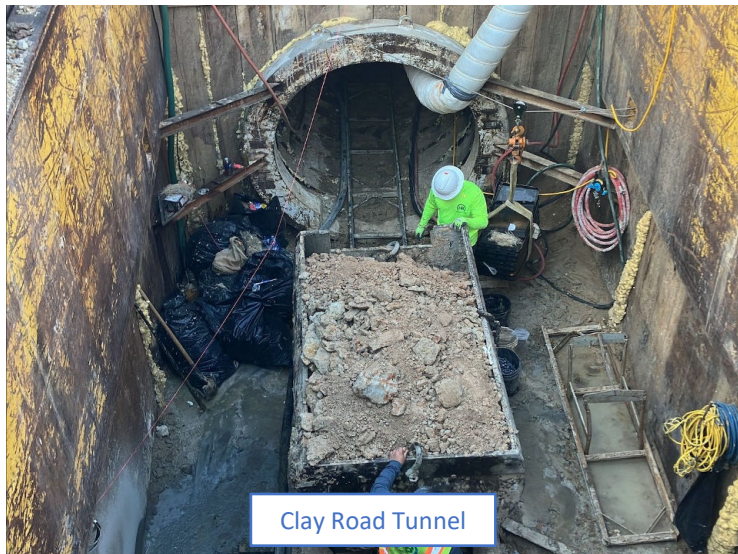
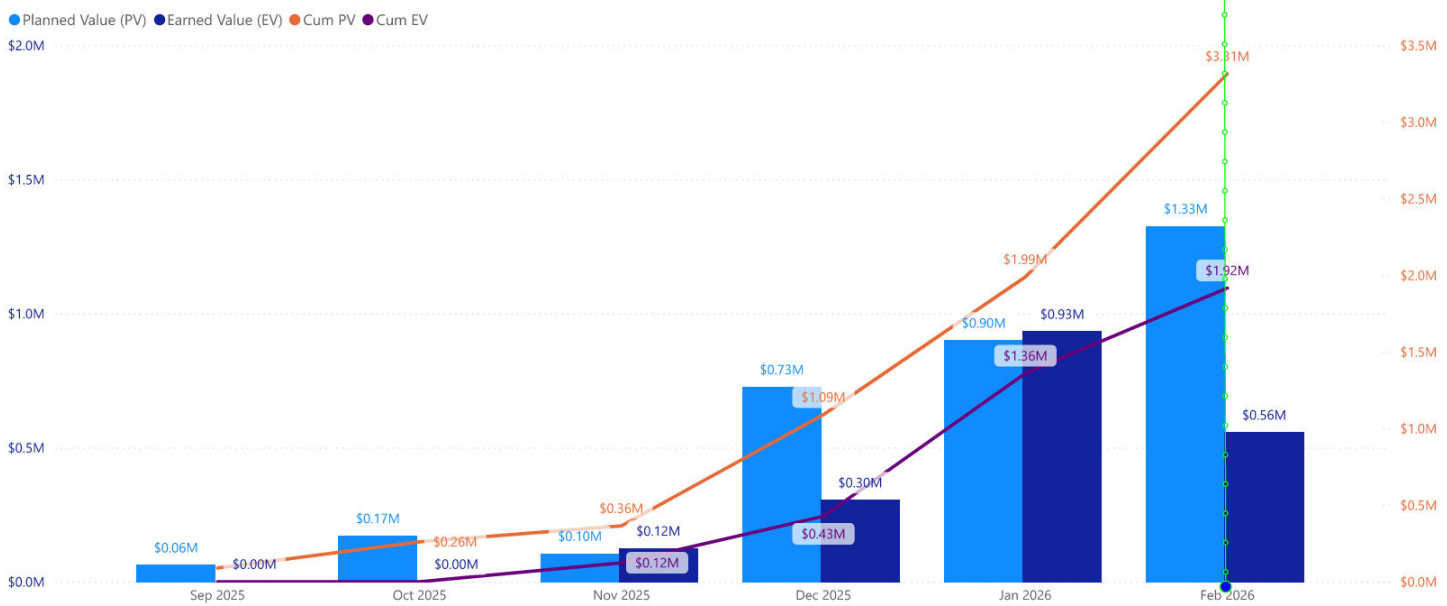
Construction Progress – KM-1



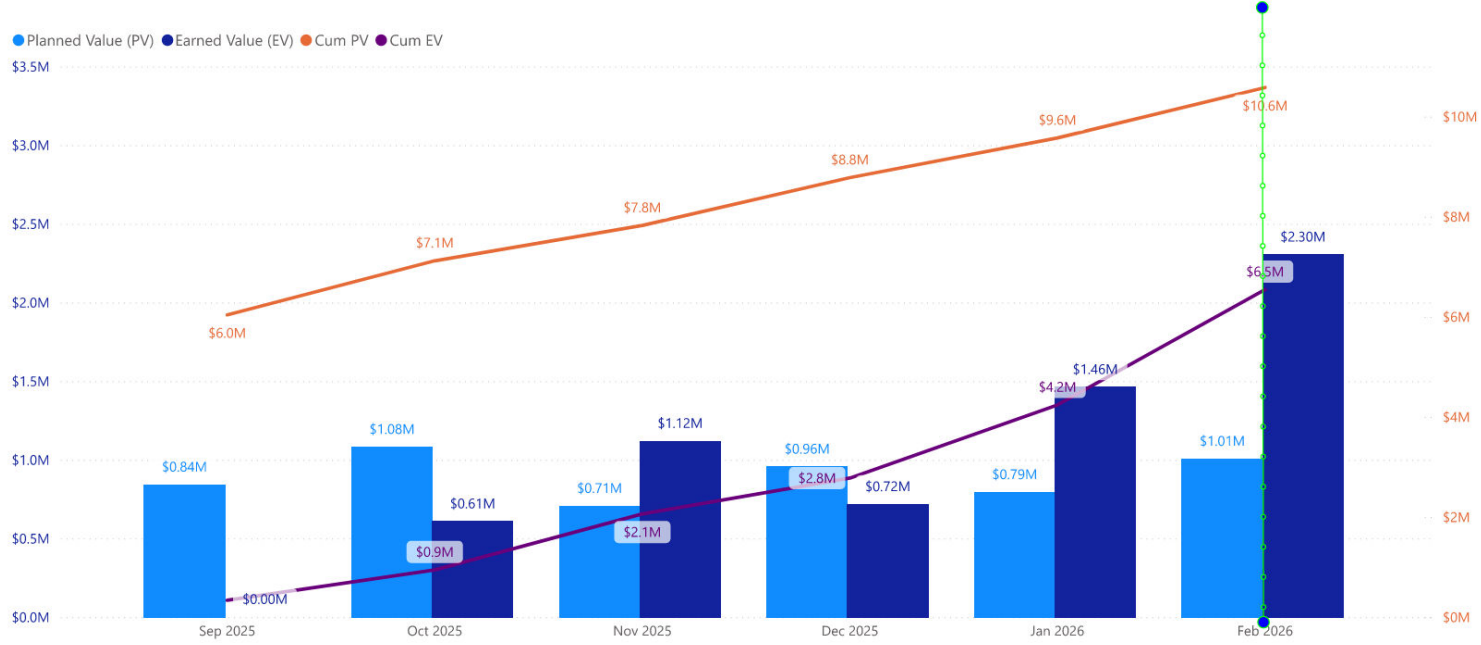
Project Name
KM1

9/25/2025 2/25/2026

Segment KM-1



Segment KM-2



Flow Meter Vault Installation



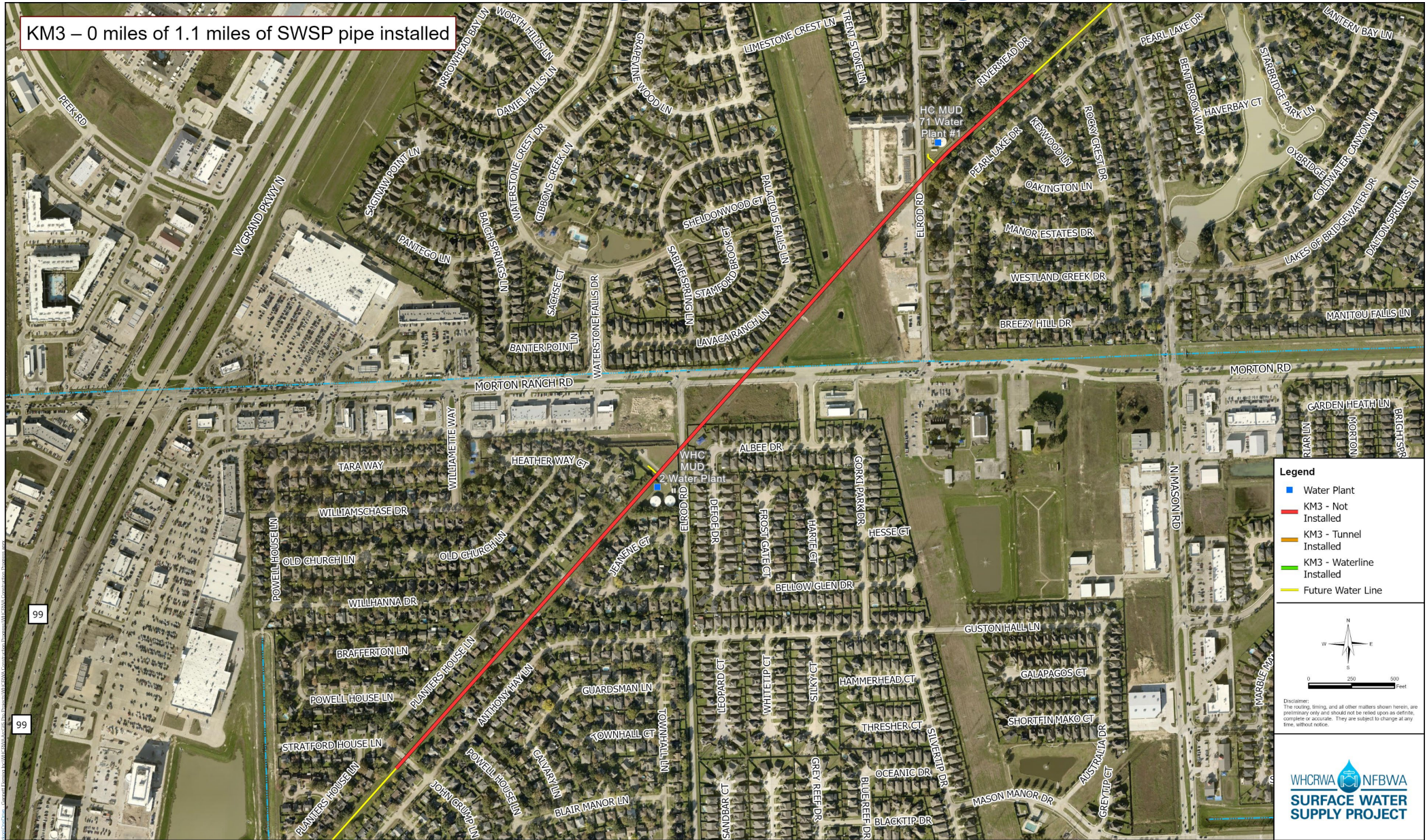
Mag Particle Testing on Welded Joints



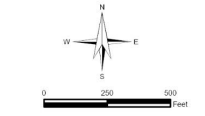
Open Cut Construction East of Lakes of Bridgewater

Construction Progress – Kinder Morgan-3

KM3 – 0 miles of 1.1 miles of SWSP pipe installed



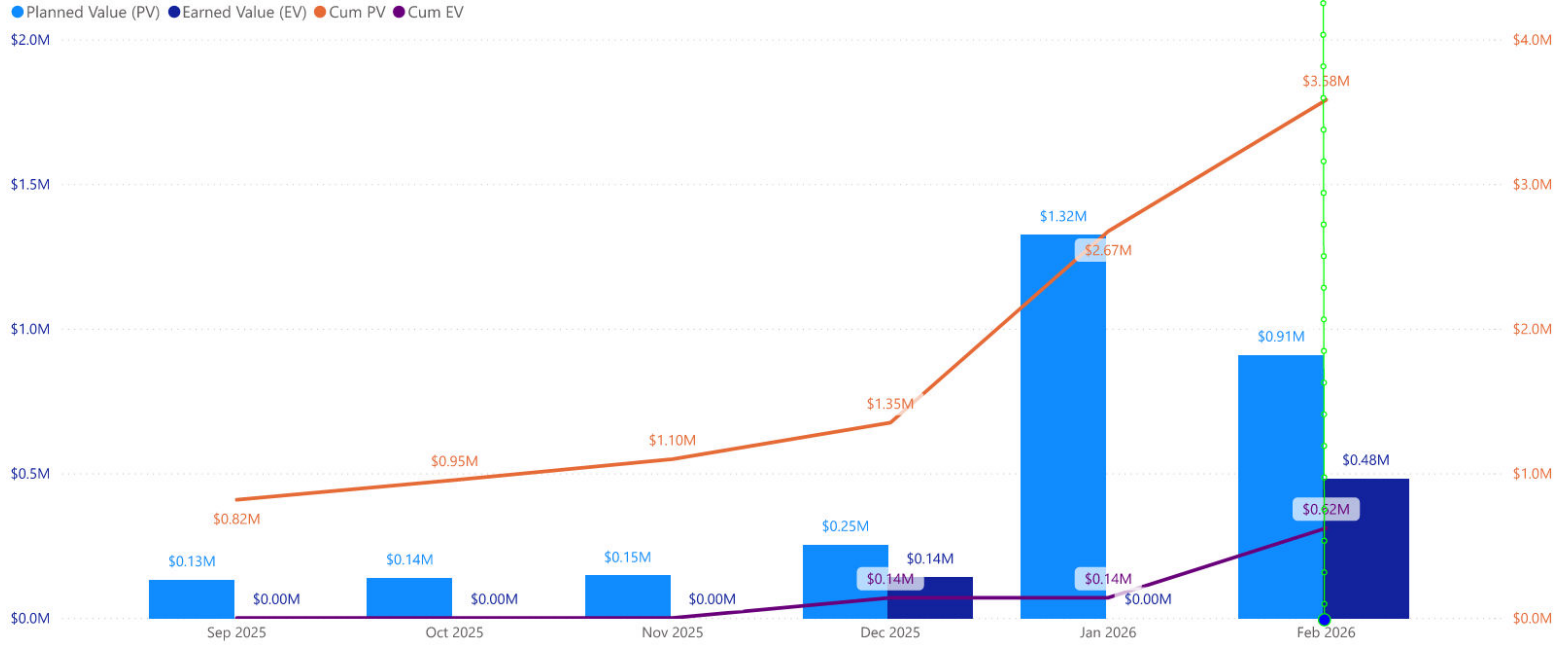
- Legend**
- Water Plant
 - KM3 - Not Installed
 - KM3 - Tunnel Installed
 - KM3 - Waterline Installed
 - Future Water Line



Disclaimer: The routing, timing, and all other matters shown herein, are preliminary only and should not be relied upon as definite, complete or accurate. They are subject to change at any time, without notice.

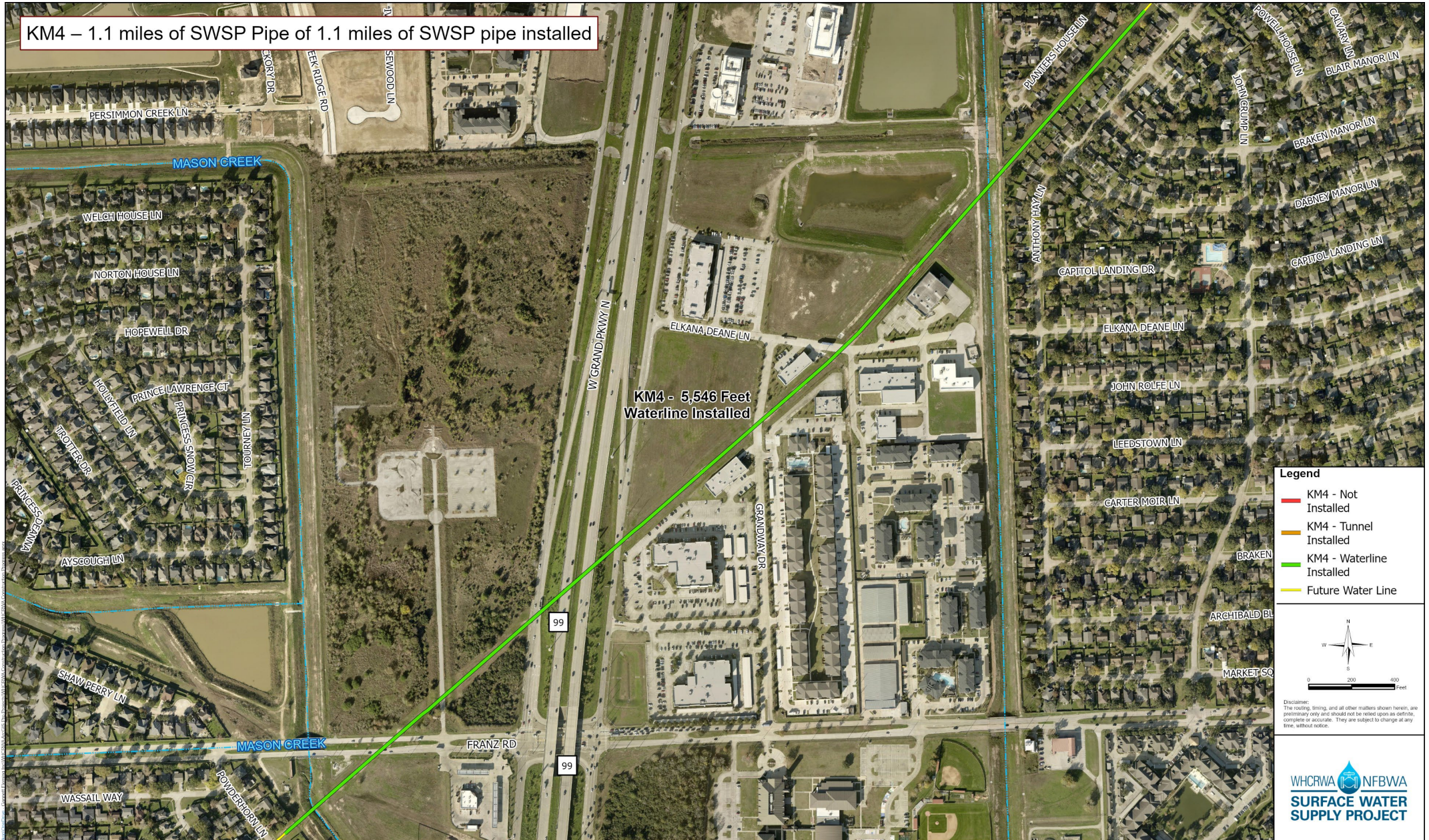
WHC RWA NFBWA
SURFACE WATER
SUPPLY PROJECT

Segment KM-3

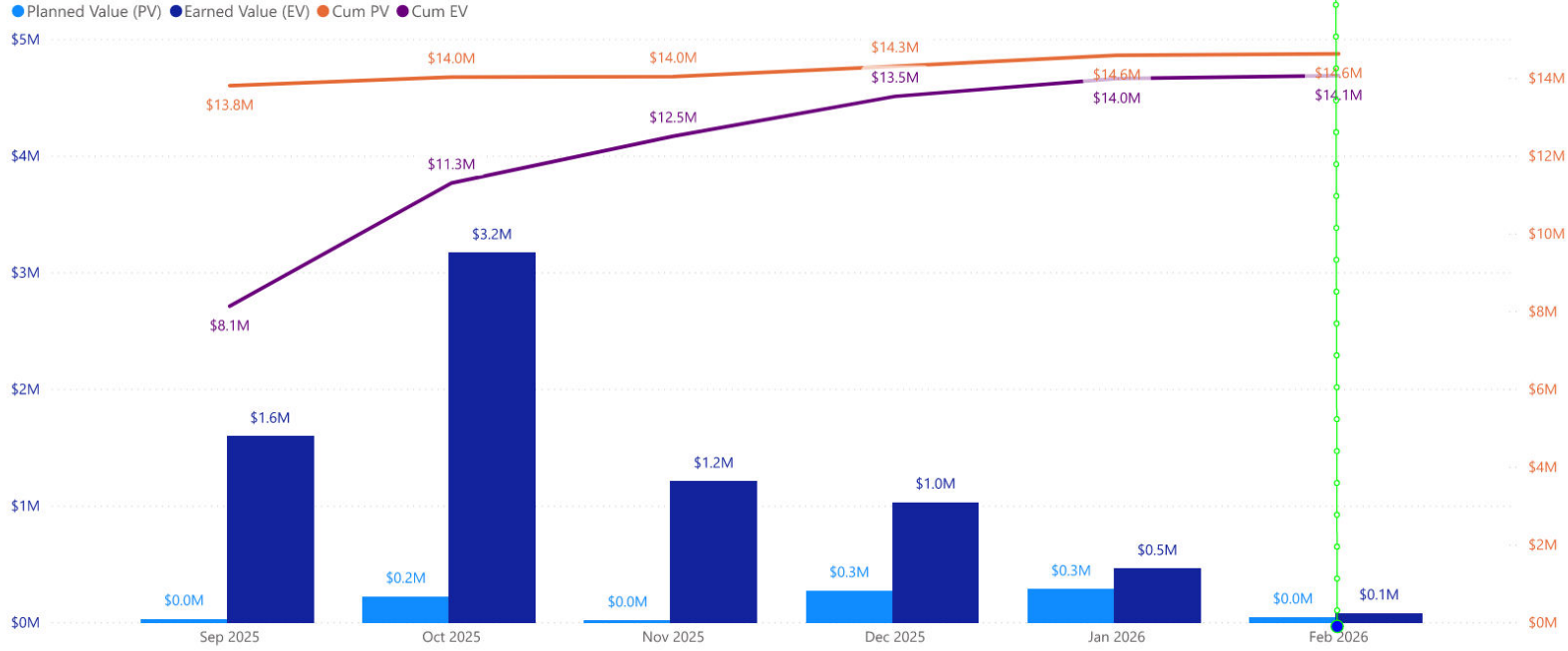


Construction Progress – Kinder Morgan-4

KM4 – 1.1 miles of SWSP Pipe of 1.1 miles of SWSP pipe installed

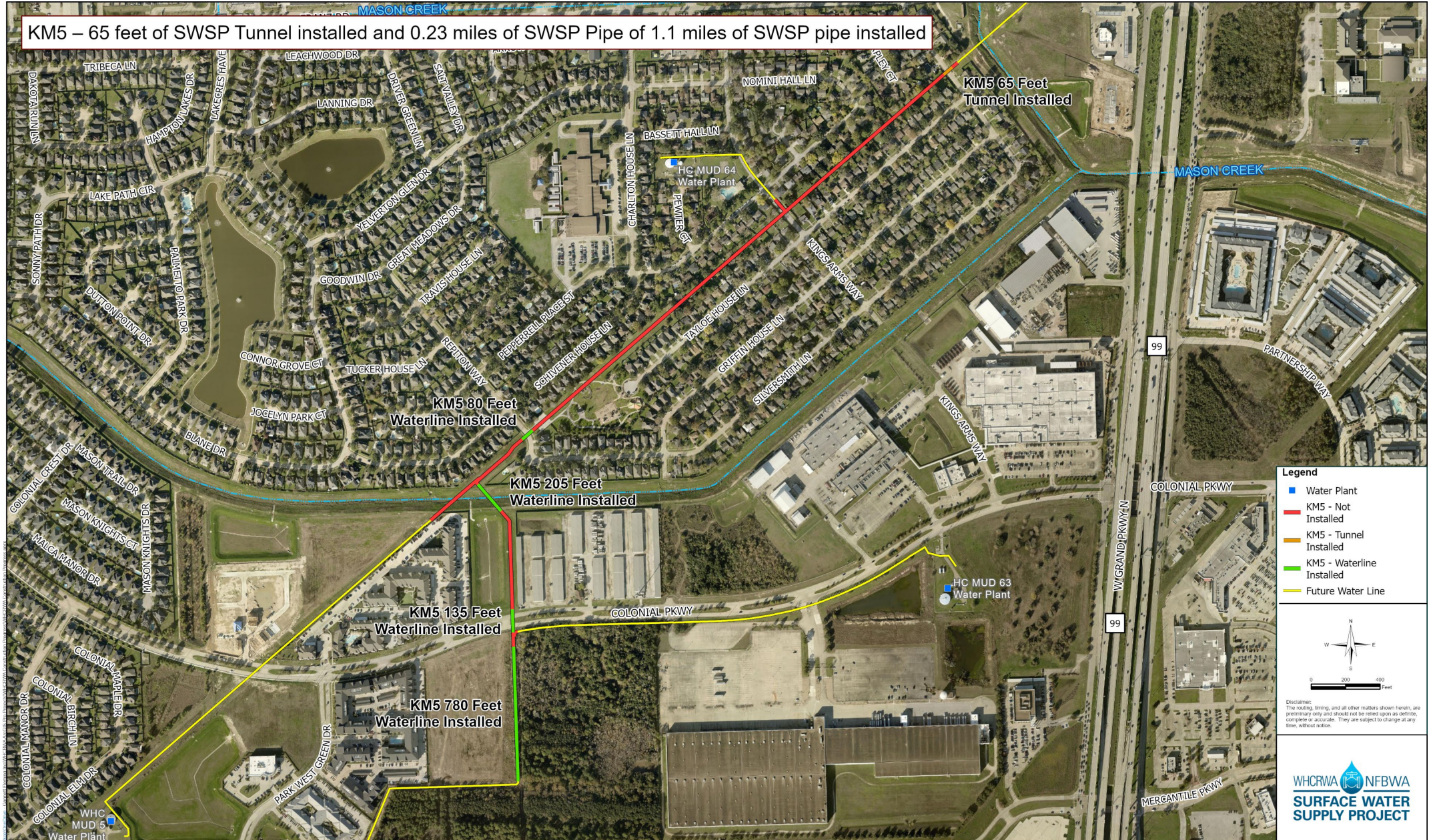


Segment KM-4

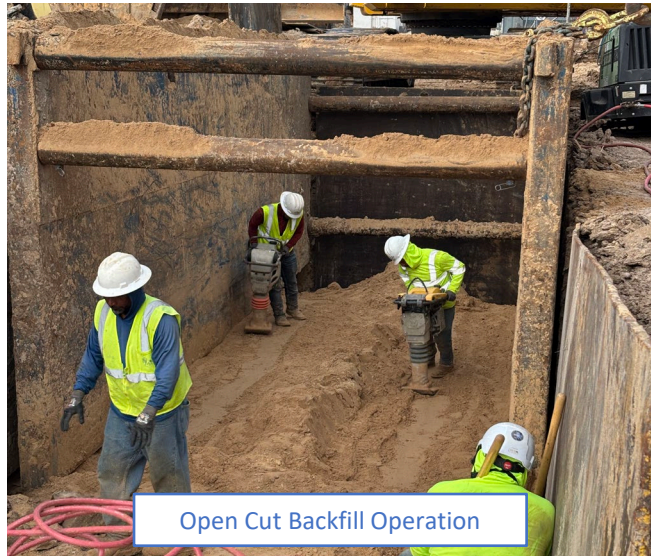
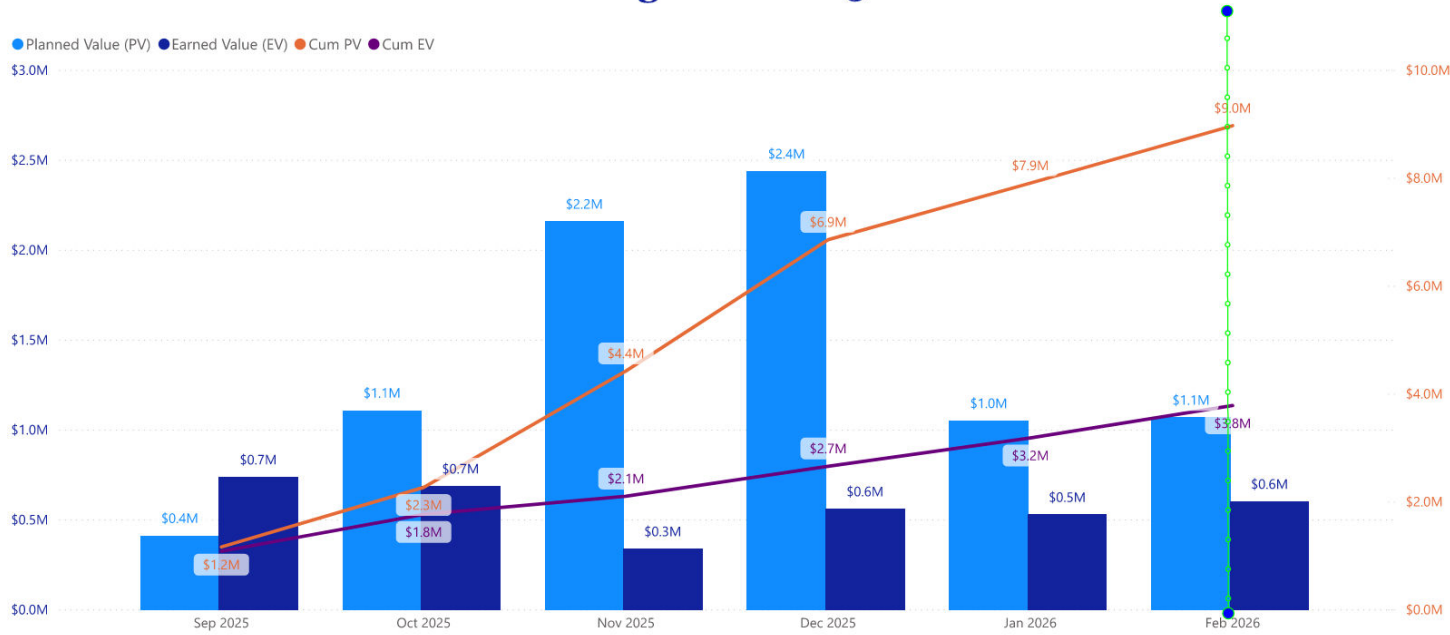


Construction Progress – Kinder Morgan-5

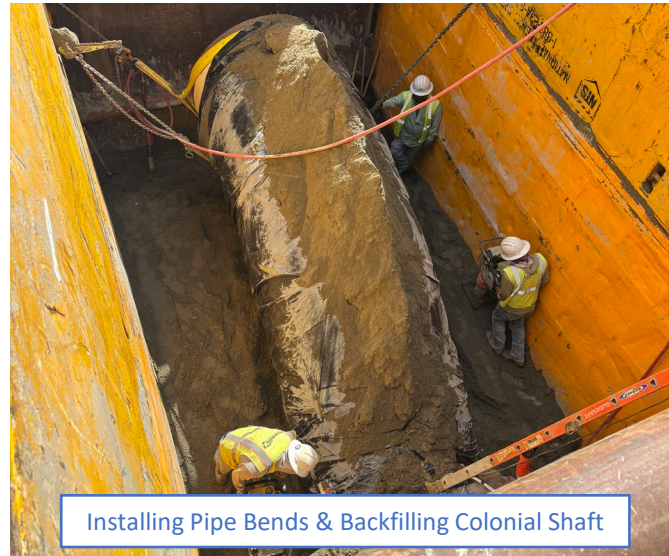
KM5 – 65 feet of SWSP Tunnel installed and 0.23 miles of SWSP Pipe of 1.1 miles of SWSP pipe installed



Segment KM-5



Open Cut Backfill Operation



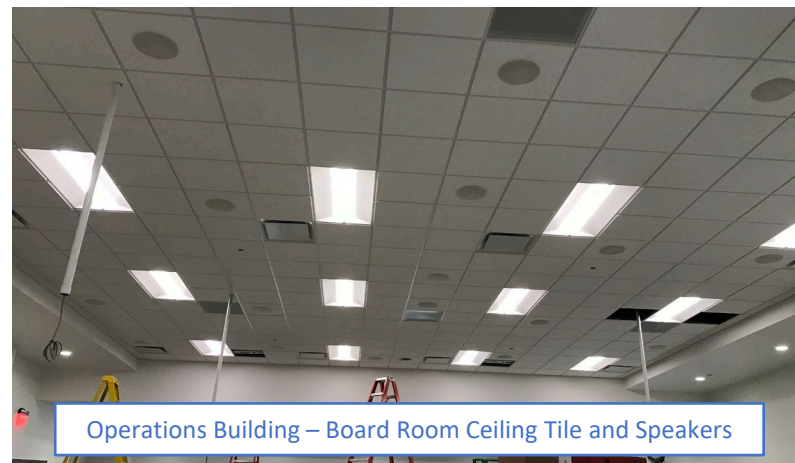
Installing Pipe Bends & Backfilling Colonial Shaft



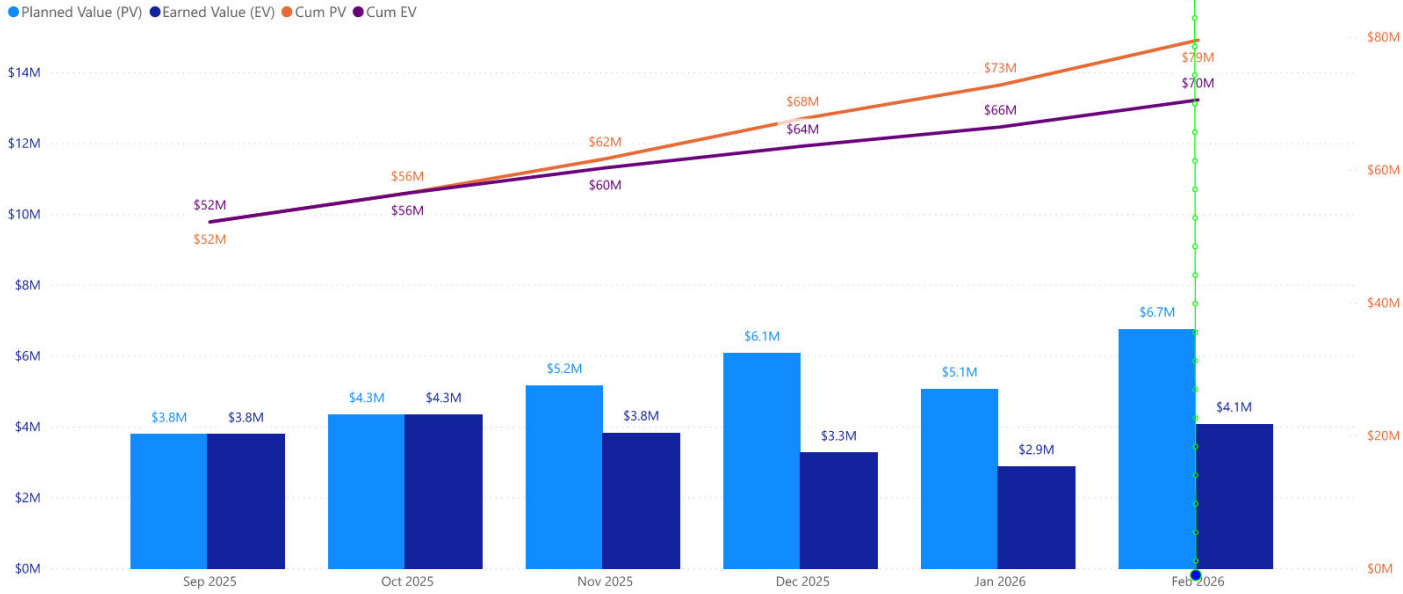
Mining Reached Receiving Shaft at Powderhorn

Central Pump Station

Planned Value (PV) Earned Value (EV) Cum PV Cum EV



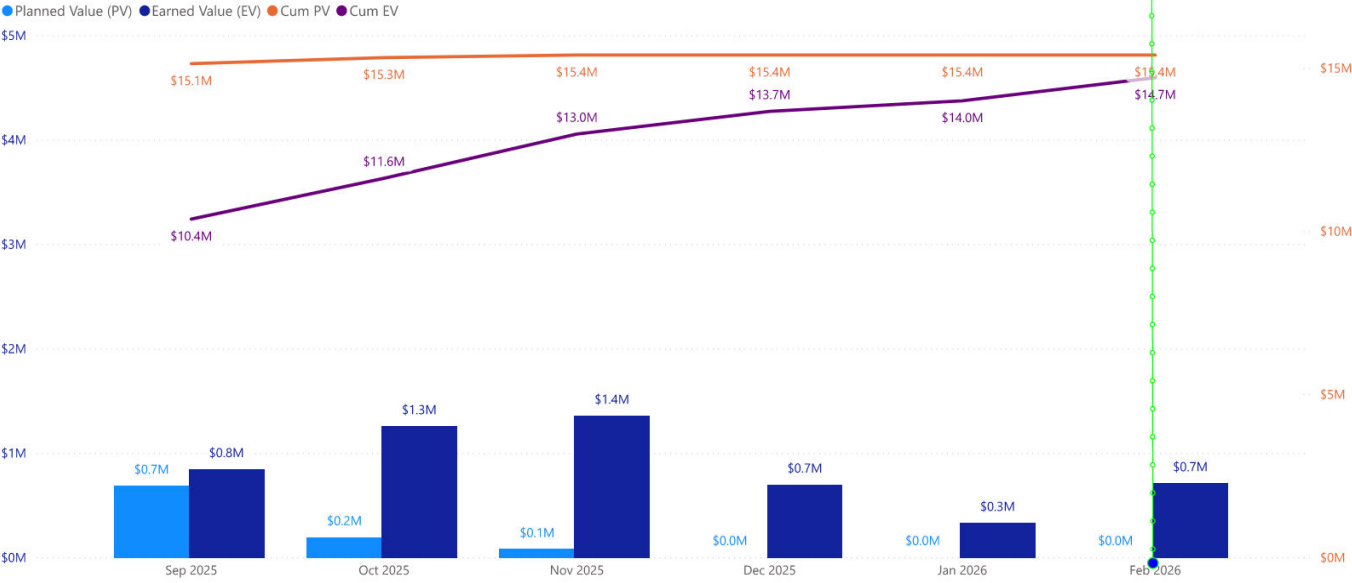
Re-Pump Station



SWSP Repump Station



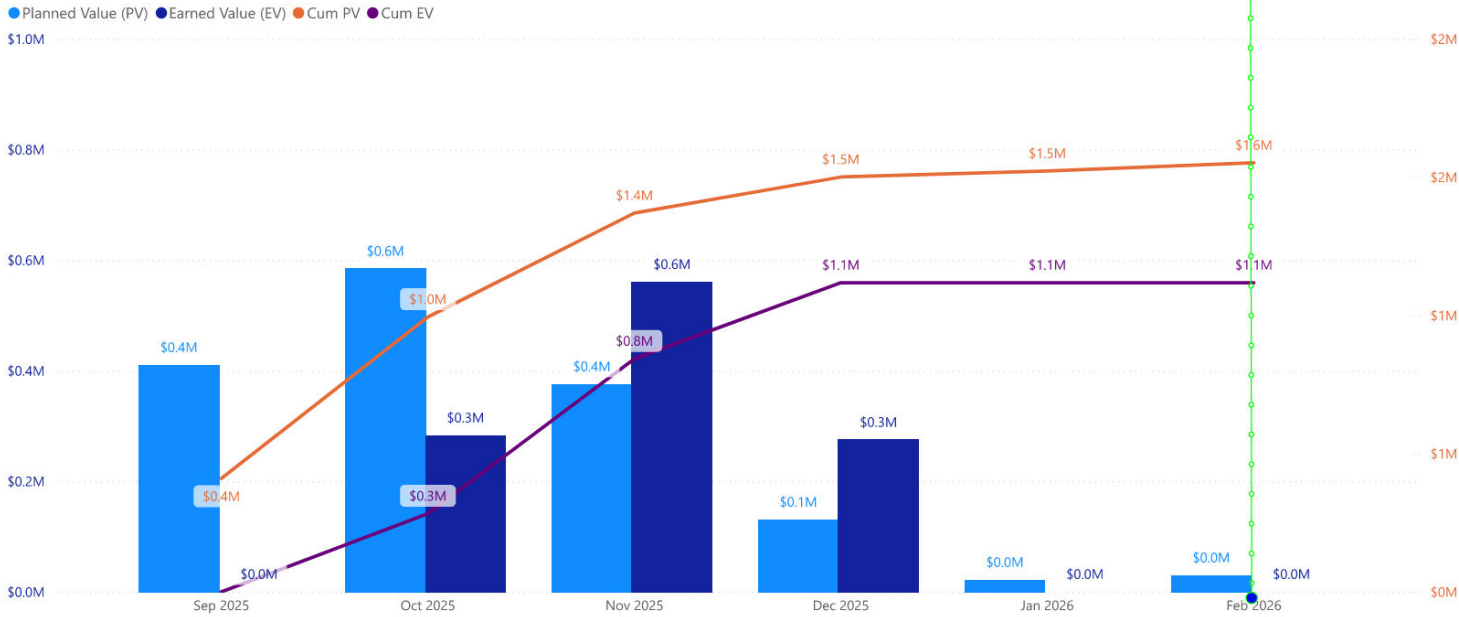
NE Meter Station



SWSP Northeast Meter Station



I-10 Meter Station



SWSP I-10 METER STATION



Seal Slab for Meter Station



Rebar On-Site for Meter Station Foundation



Hydromulching Detention Pond

CIP CONTRACTS



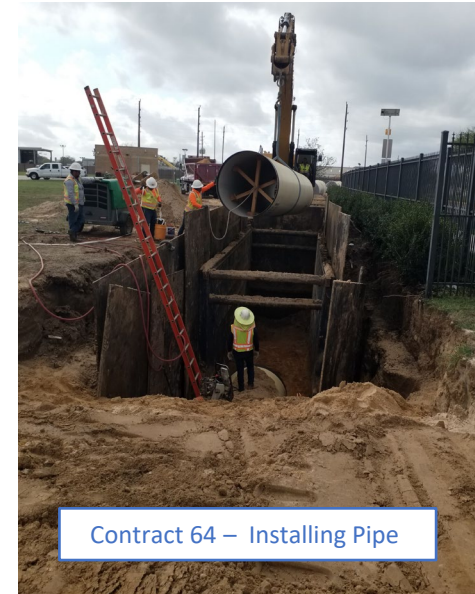
Contract 65 – Watering Sod



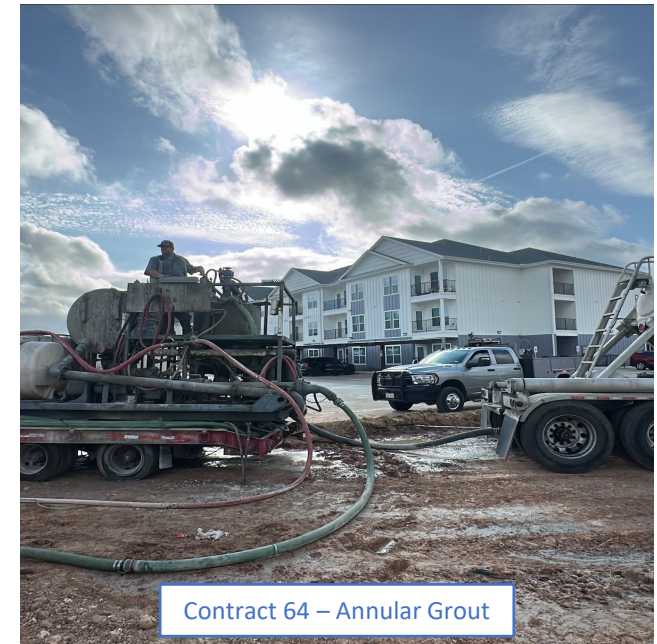
Contract 65 – Park Restoration



Contract 64 – MTBM at Sandleford Launch Shaft



Contract 64 – Installing Pipe



Contract 64 – Annular Grout