

# January 2026 Monthly Construction Status Report

*Updated: 02.10.2026*



RePump Station – Aerial Pipe Looking Out at Pump Station

## WHCRWA Ongoing Construction Projects

### Segment B1-B2

3 MILES OF 84-INCH DIAMETER AND 8 MILES OF 96-INCH WATERLINES FROM WEST OF BRITTMOORE ROAD TO WEST OF I-45

### Segment B3

4.4 MILES OF 96-INCH DIAMETER WATER LINES FROM WEST OF I-45 TO THE SOUTH SIDE OF HOPPER RD. VIA TUNNEL

### Central Pump Station

CONSTRUCTION OF A CENTRAL PUMP STATION THAT WILL RECEIVE WATER FROM THE RE-PUMP STATION AND THEN TRANSFER WATER TO MUDS

### Segment A1-A2

11 MILES OF 96-INCH WATER LINE FROM HOPPER RD. TO THE WHCRWA METER STATION NEAR THE NEWPP

### RePump Station

CONSTRUCTION OF A 160 MGD REPUMP STATION FACILITY INCLUDING TWO 10 MILLION GALLON TANKS

### NorthEast Meter Station

CONSTRUCTION OF A METER STATION AT COH/WHCRWA INTERFACE

### Kinder Morgan 1, 2, 3, 4, 5, & 6 - (6 Projects)

6 MILES OF 66-INCH AND 1,300 LF OF 84-INCH WATERLINE FROM SEGMENT C1 CONNECTION TO THE I-10 METER STATION

### I-10 Meter Station

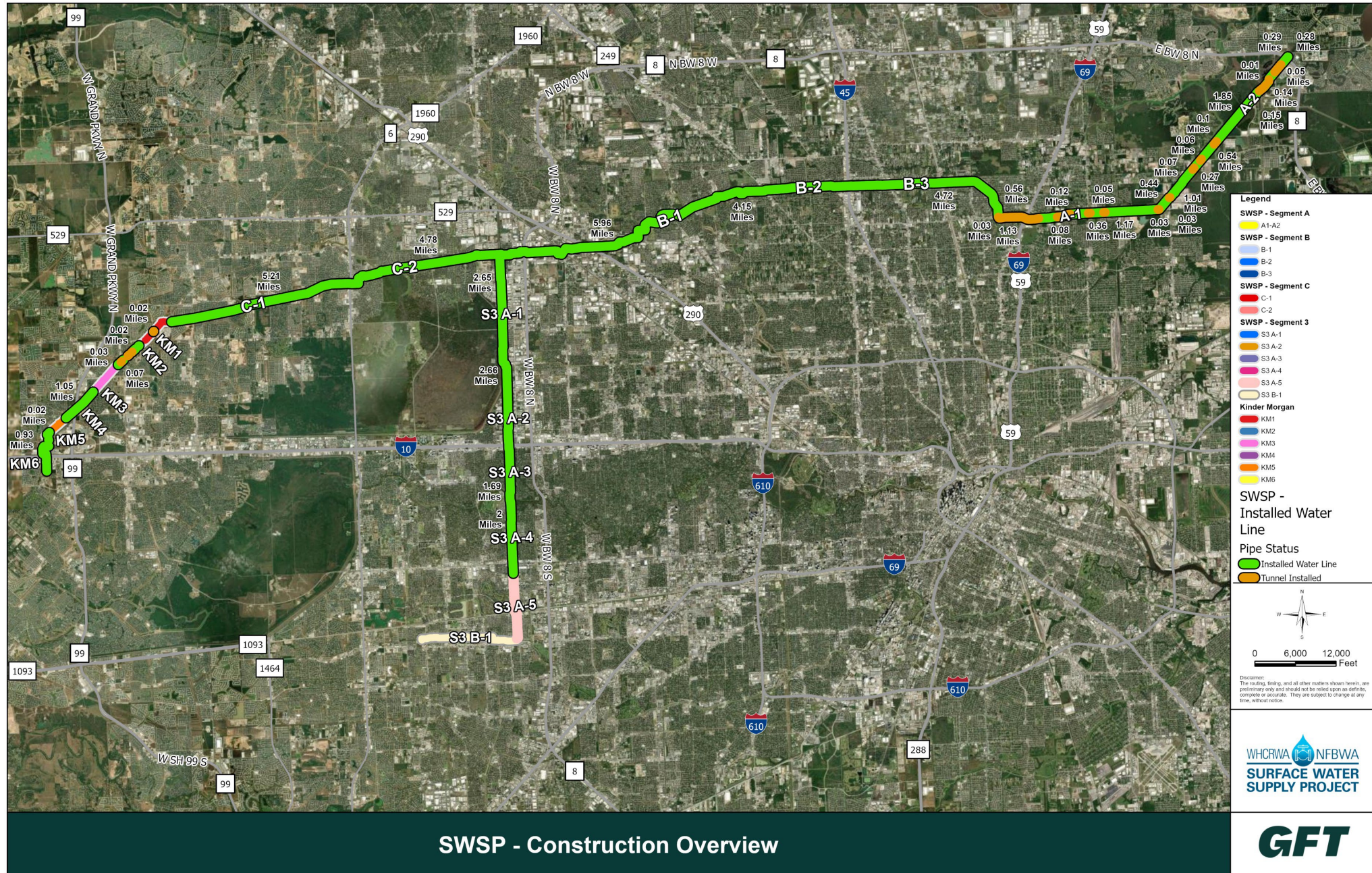
CONSTRUCTION OF A METER STATION AT THE NFBWA INTERFACE

### CIP Projects

CONTRACTS 51, 63, 64, & 65

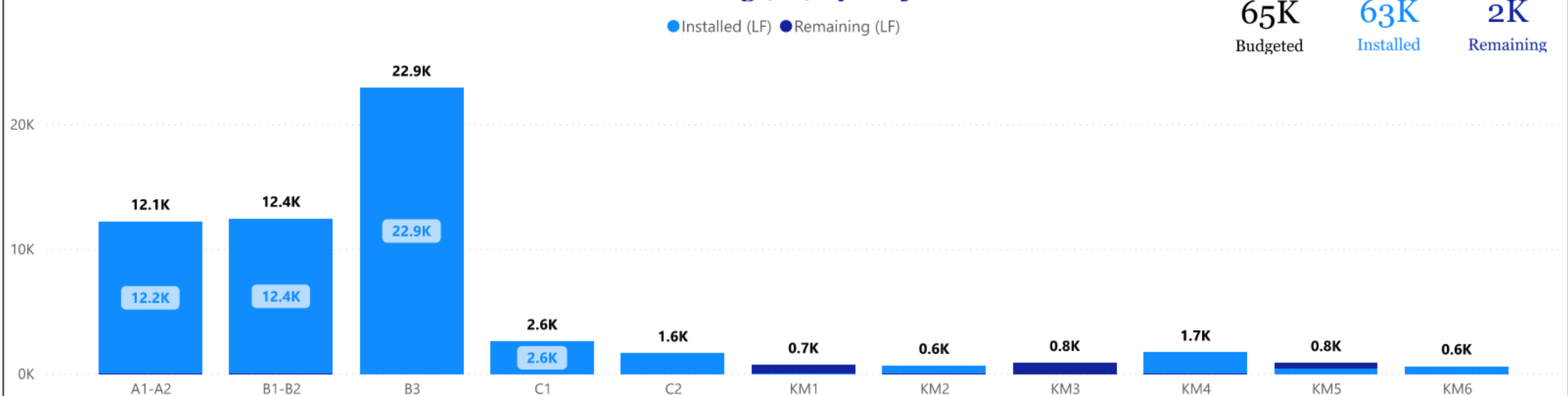


# Current SWSP Construction Projects Overview

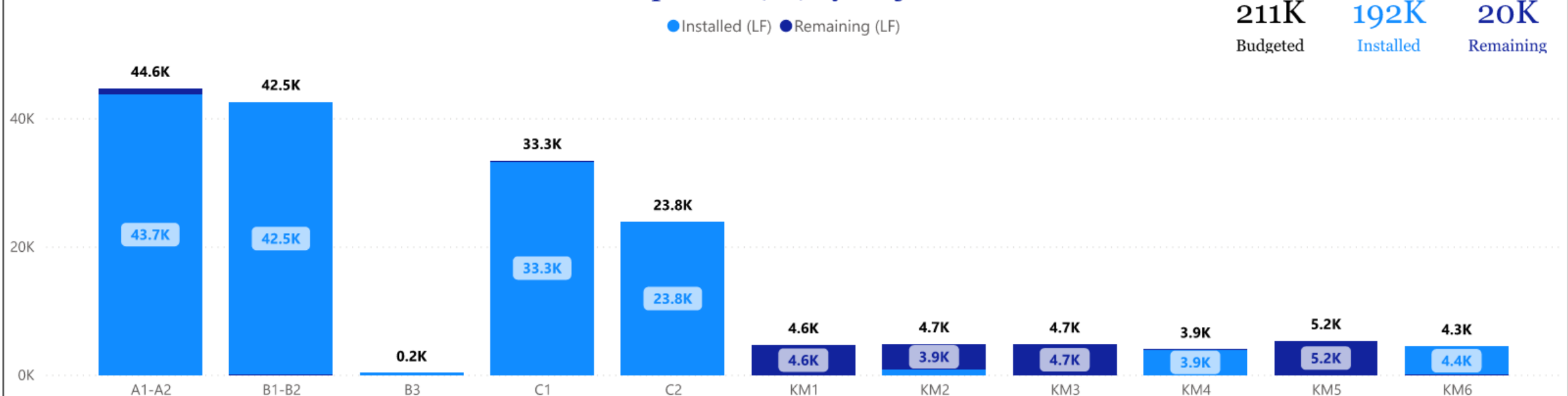




## Tunneling (LF) by Project

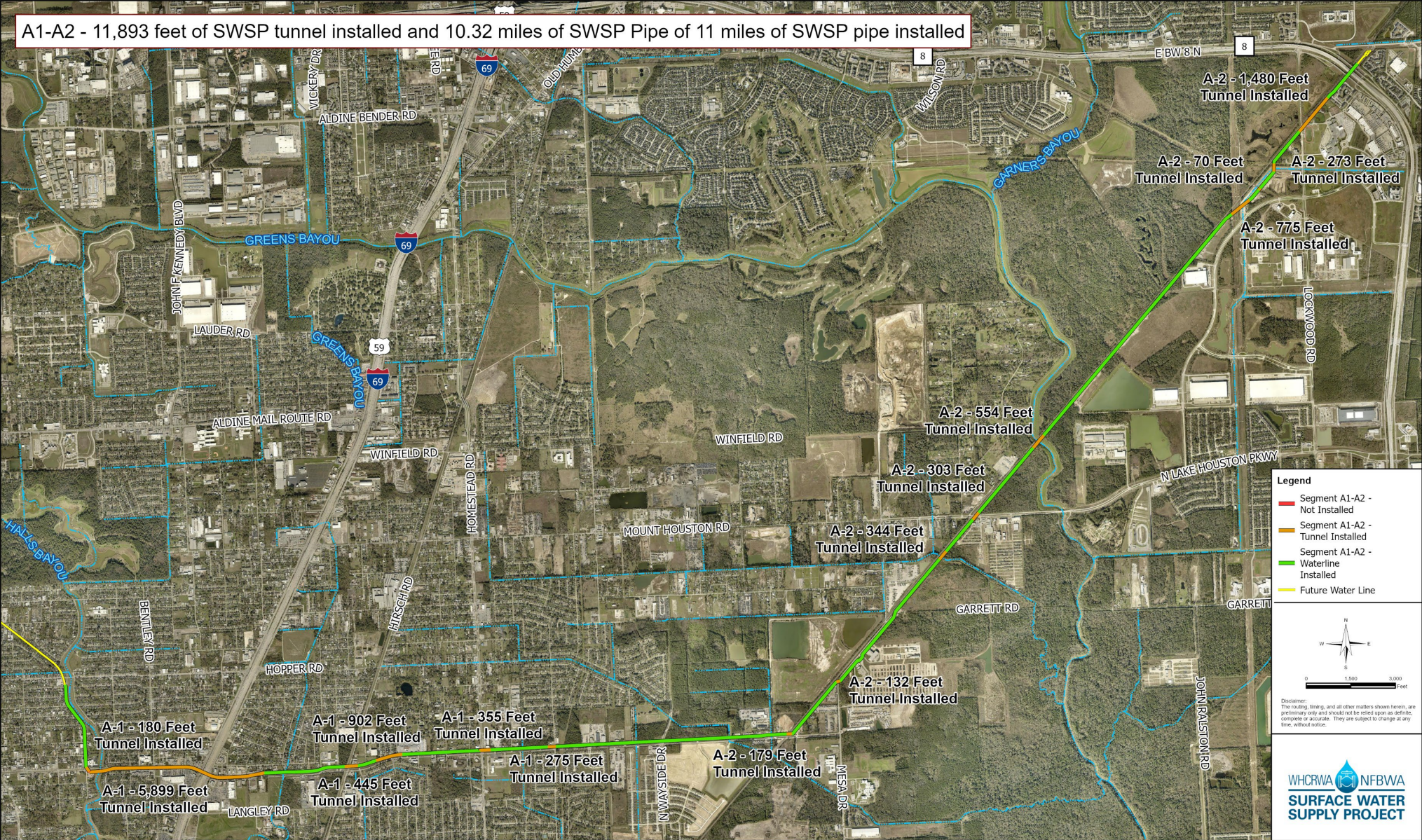


## Open Cut (LF) by Project





### Construction Progress – Segment A1-A2

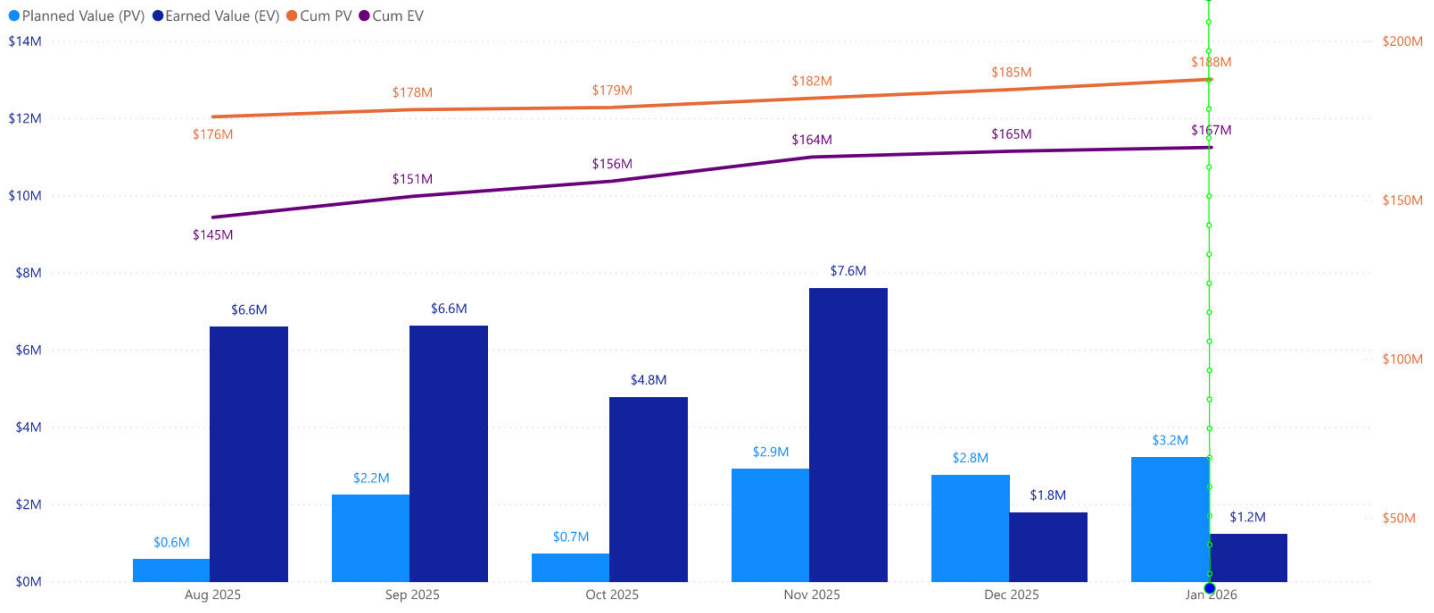




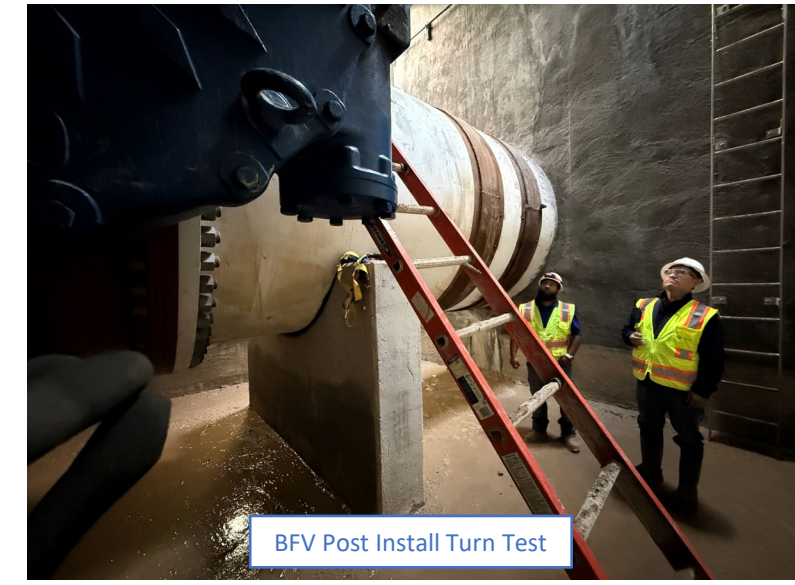
Project Name  
A1-A2

8/25/2025 1/25/2026

# Segment A1|A2

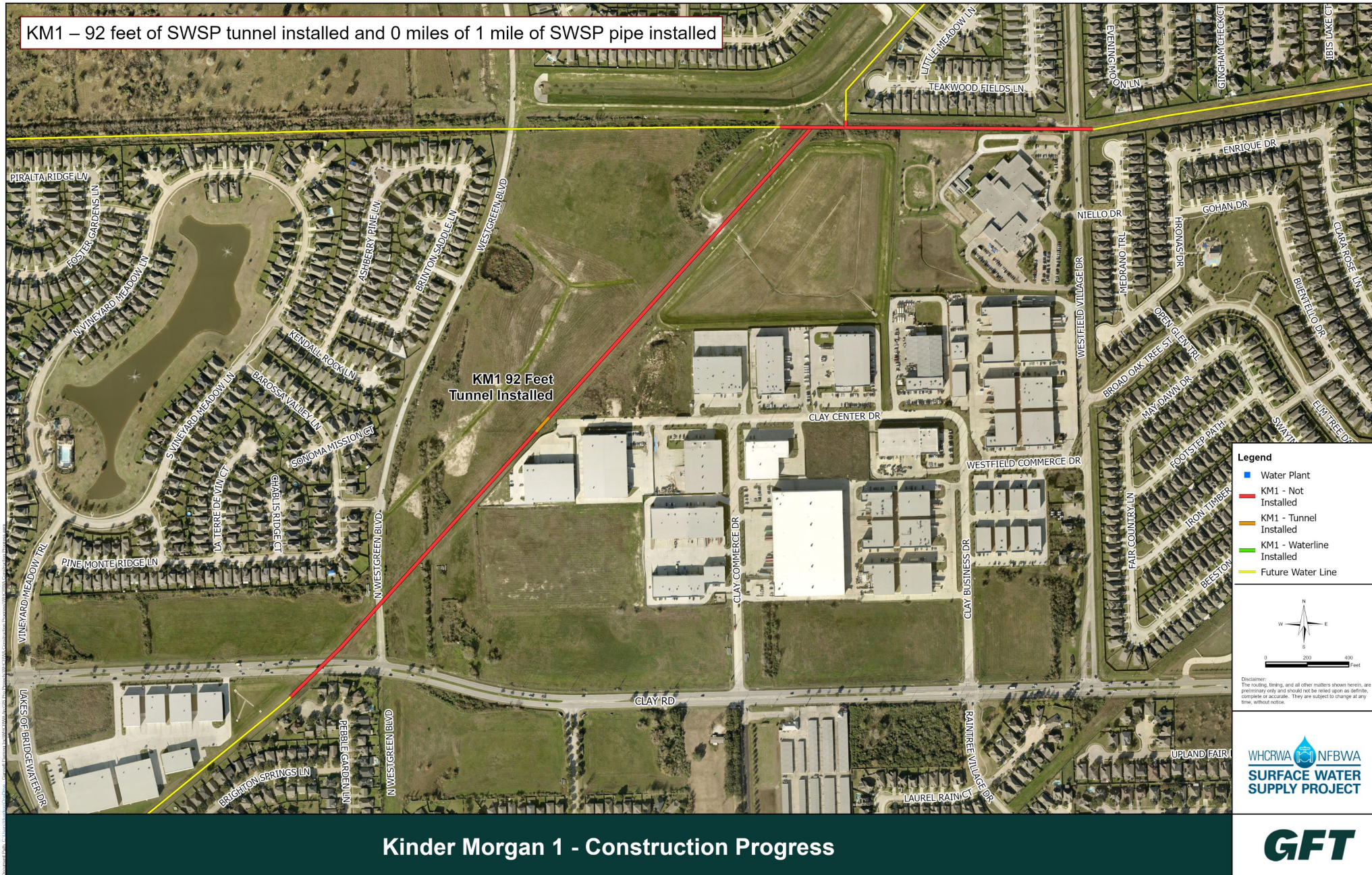


## SWSP Segment A1-A2





# Construction Progress – KM-1





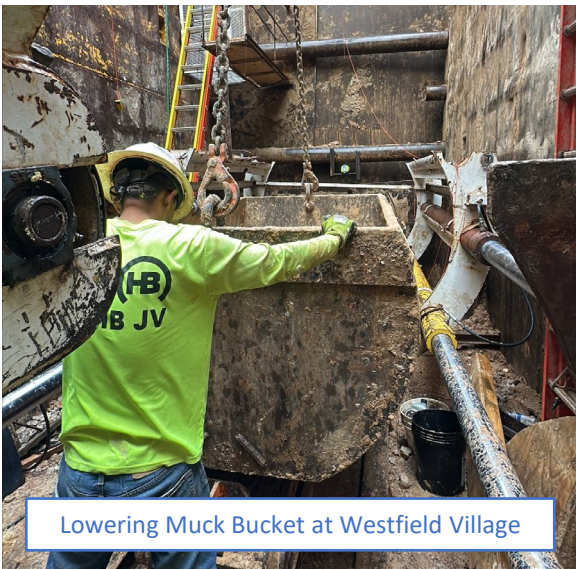
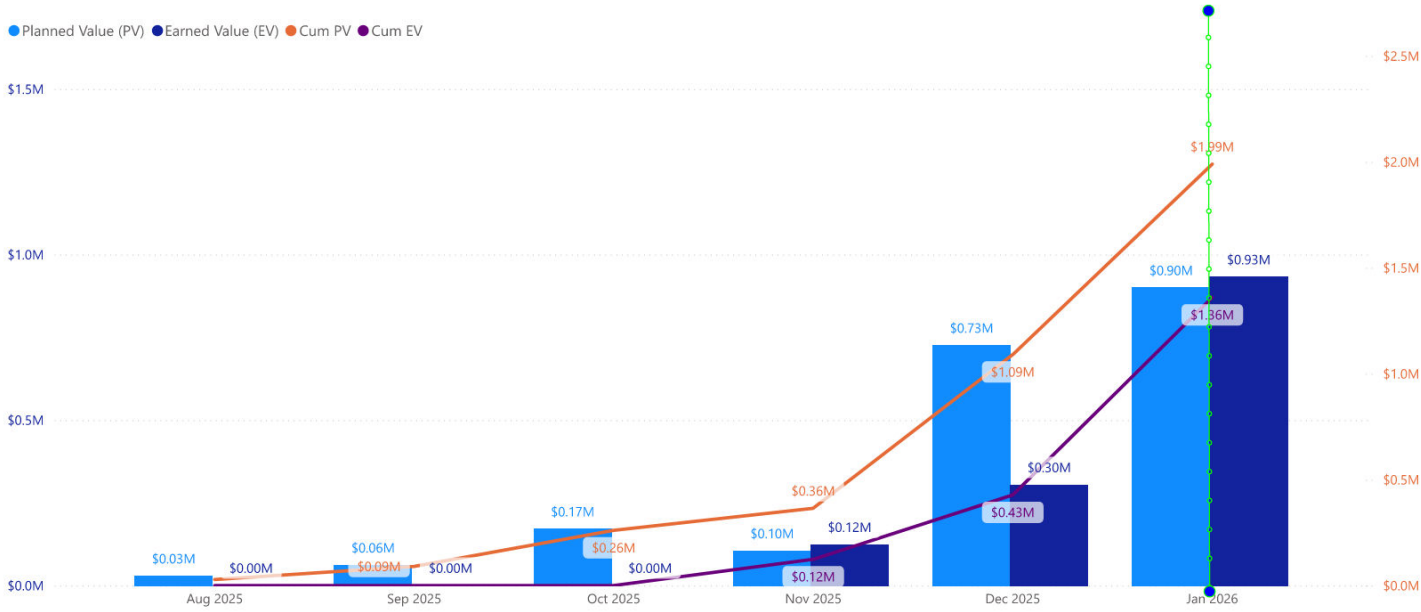
Project Name

KM1

8/25/2025

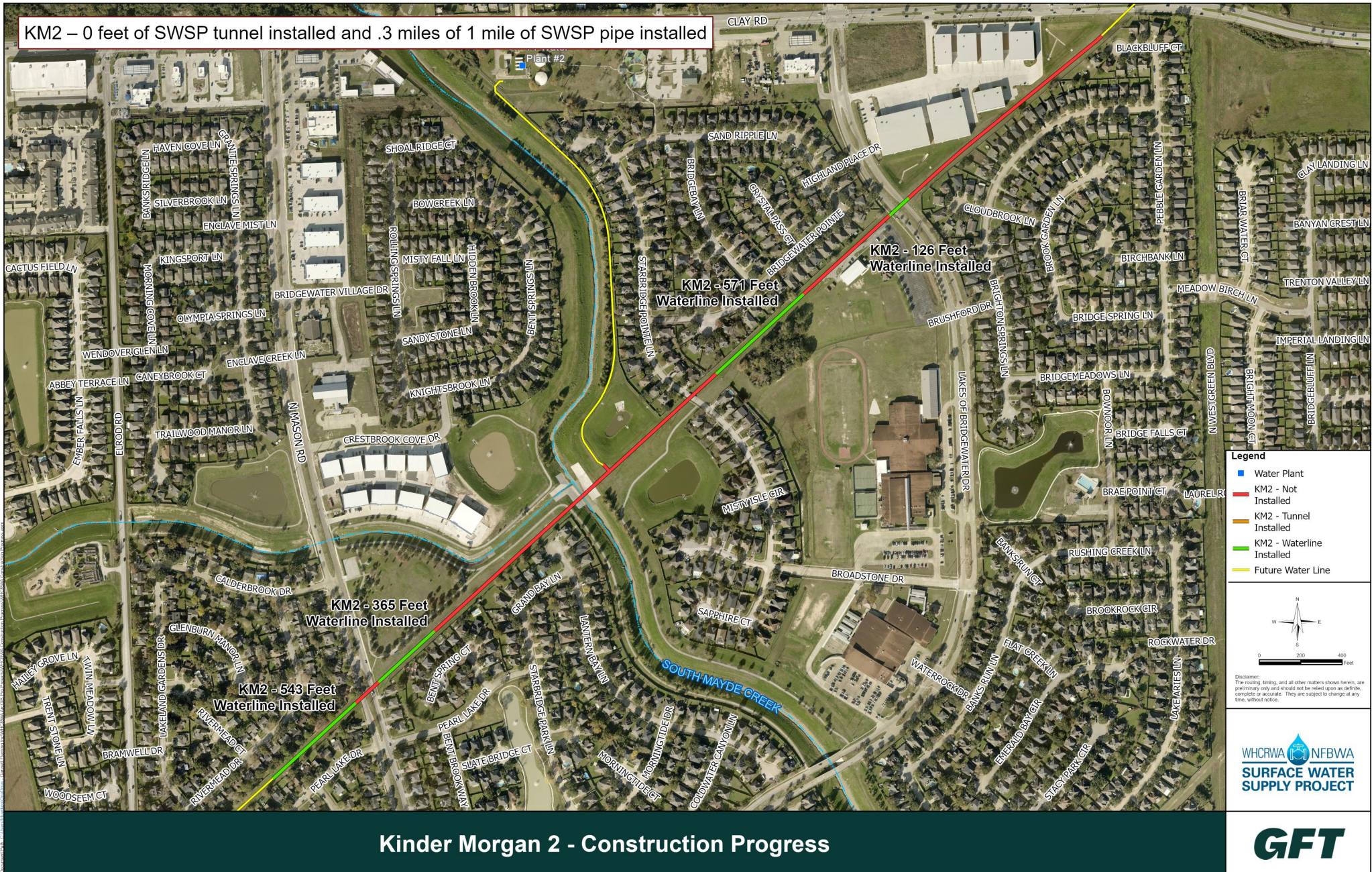
1/25/2026

Segment KM-1





# Construction Progress – Kinder Morgan-2

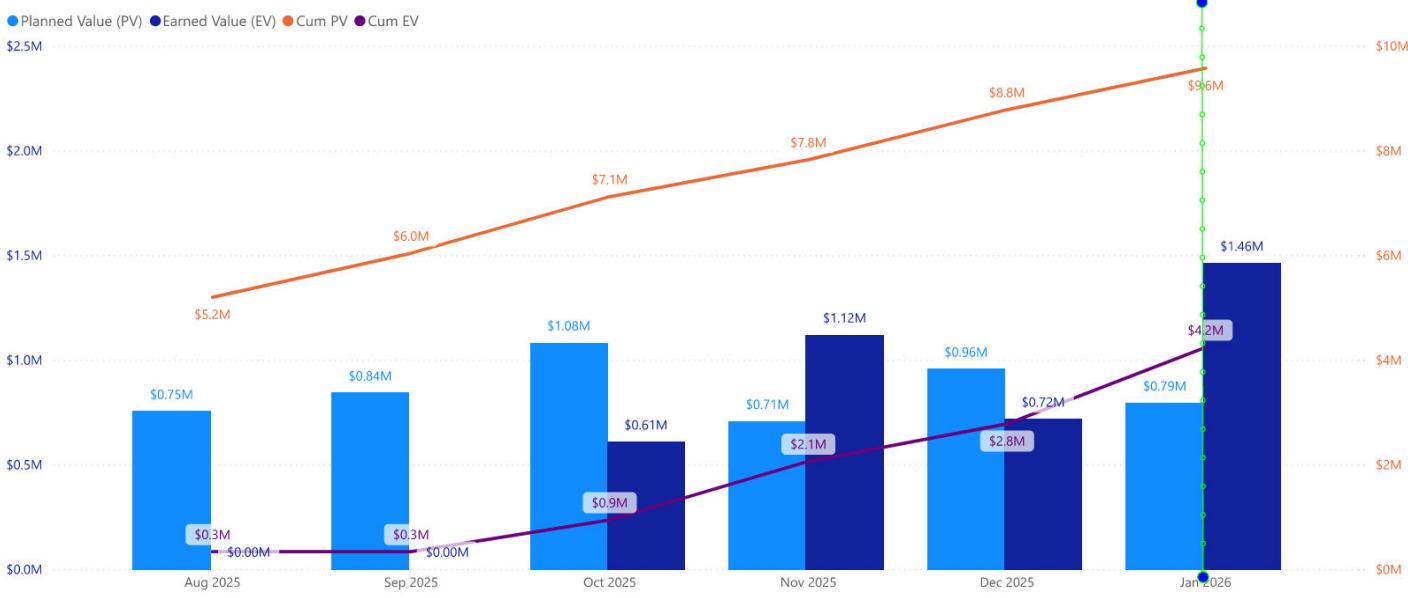




Project Name  
KM2

8/25/2025 1/25/2026

Segment KM-2



Holiday Testing



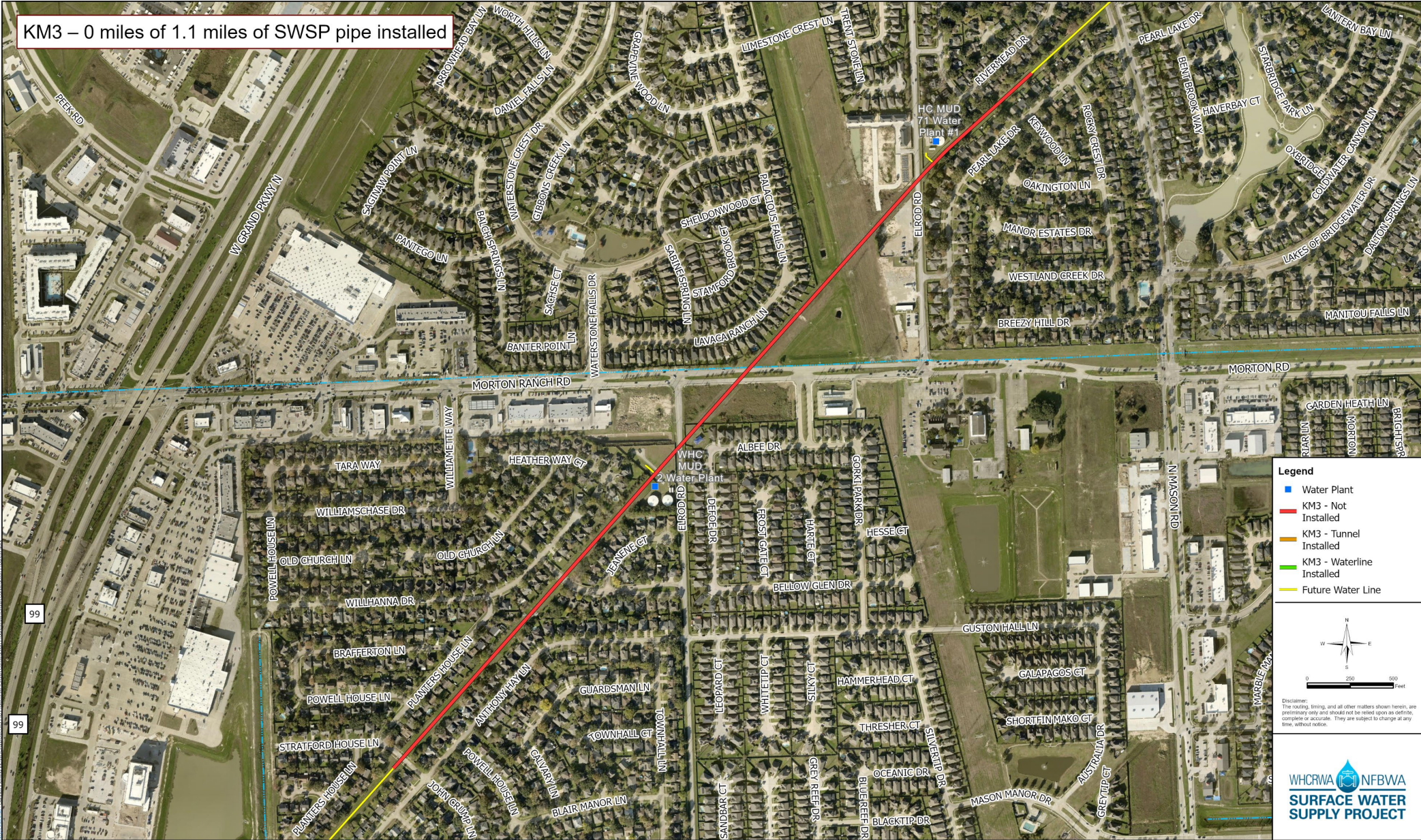
GPS Shot



Butt Strap Air Test at N. Mason



# Construction Progress – Kinder Morgan-3



Kinder Morgan 3 - Construction Progress





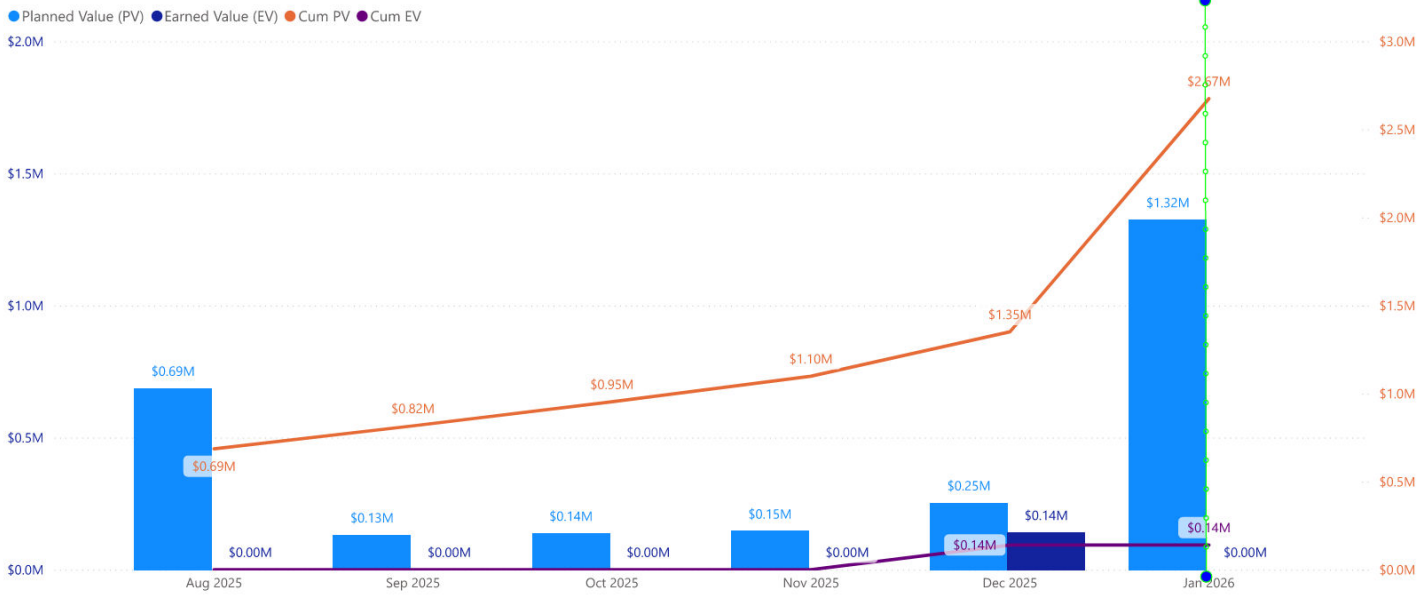
Project Name

KM3

8/25/2025

1/25/2026

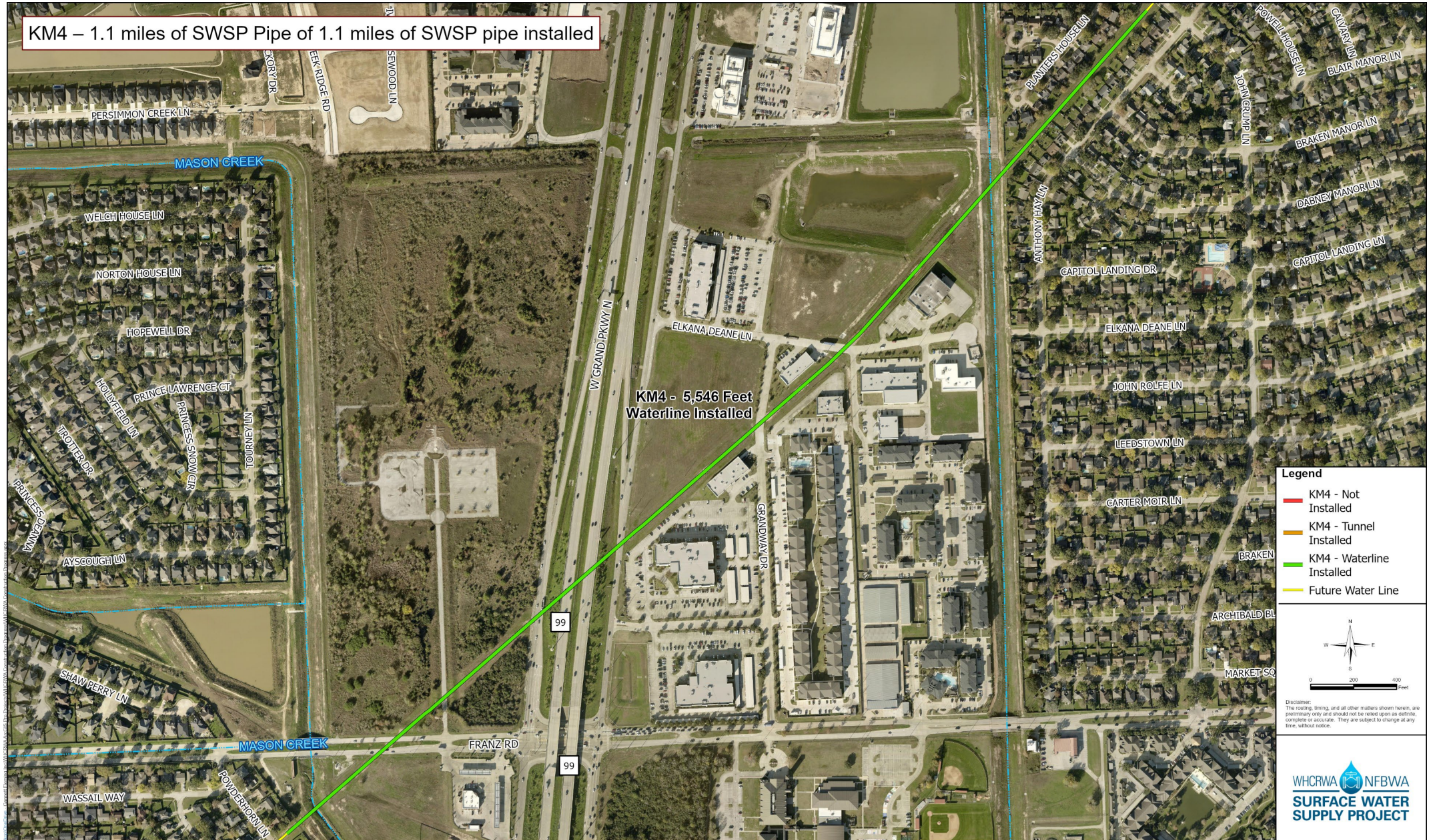
Segment KM-3





# Construction Progress – Kinder Morgan-4

KM4 – 1.1 miles of SWSP Pipe of 1.1 miles of SWSP pipe installed



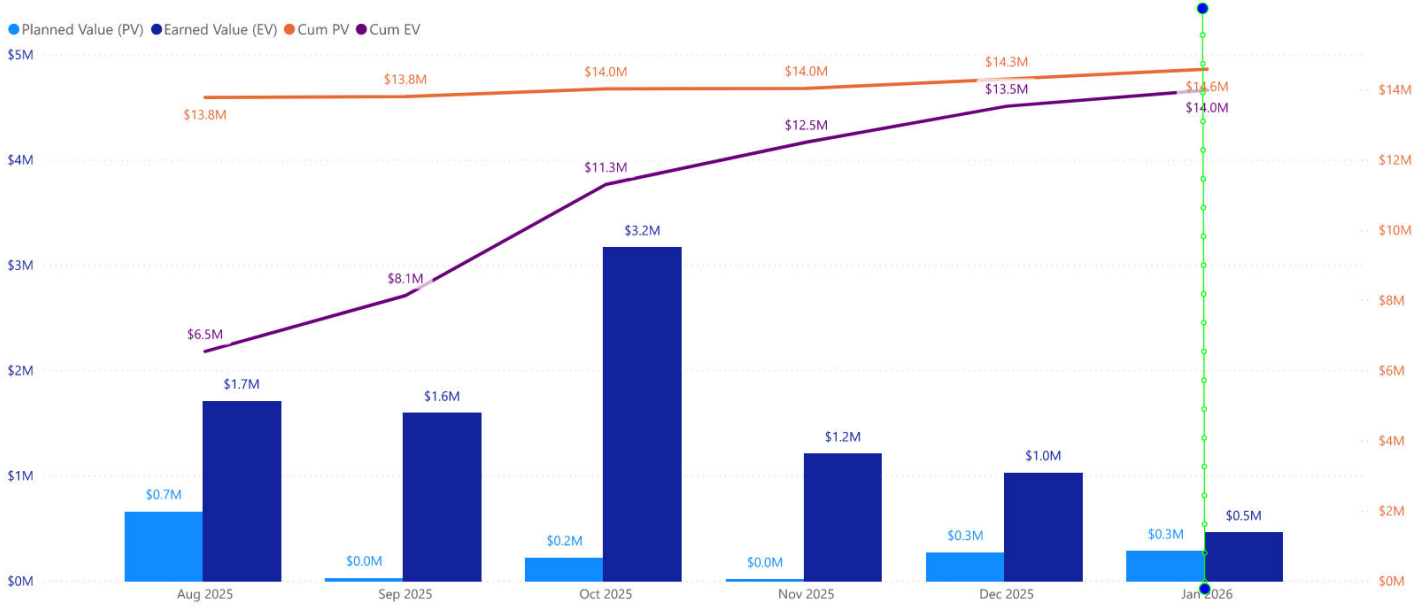
Kinder Morgan 4 - Construction Progress

WHCRWA NFBWA  
SURFACE WATER  
SUPPLY PROJECT

GFT

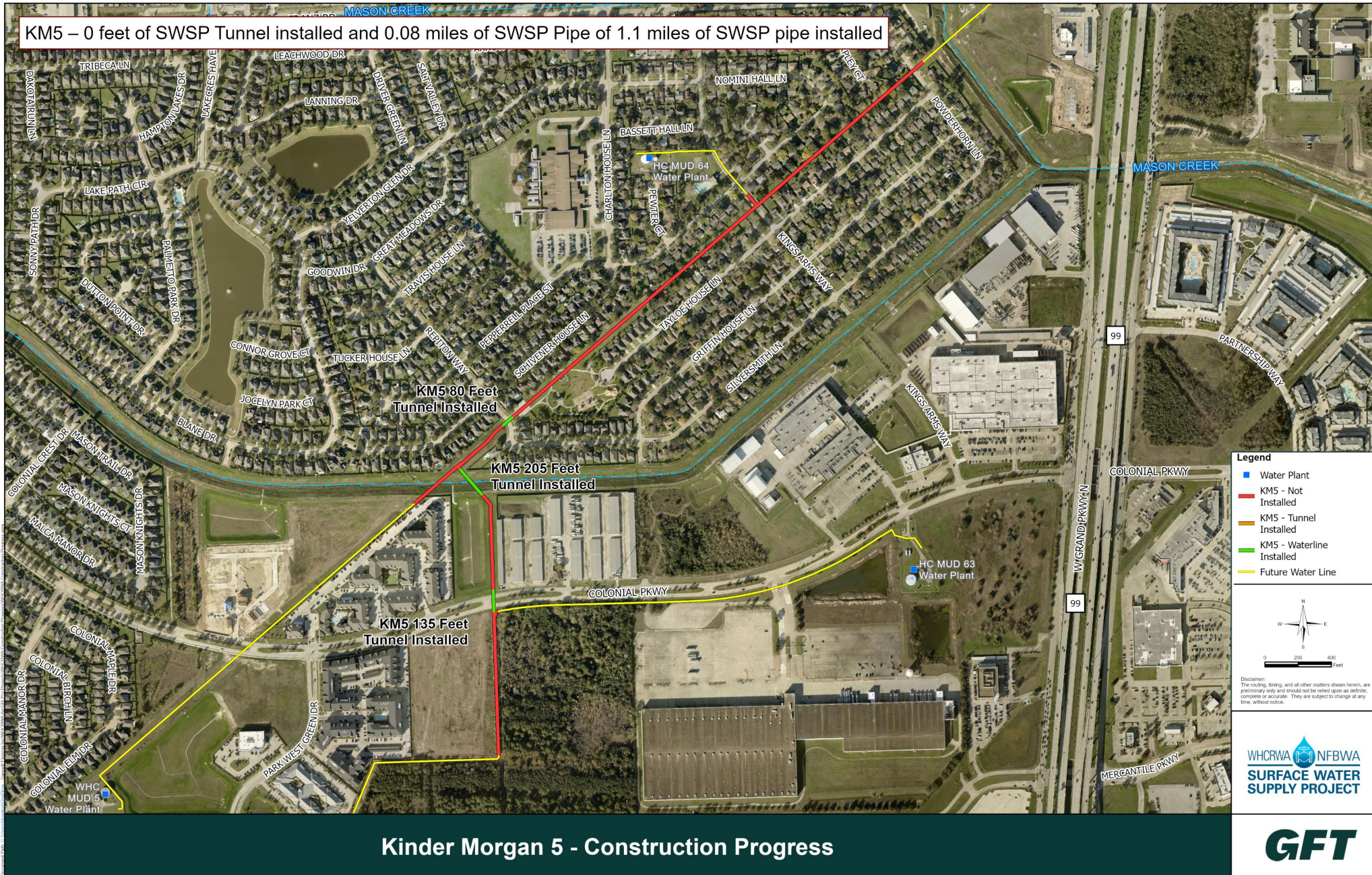


Segment KM-4





# Construction Progress – Kinder Morgan-5





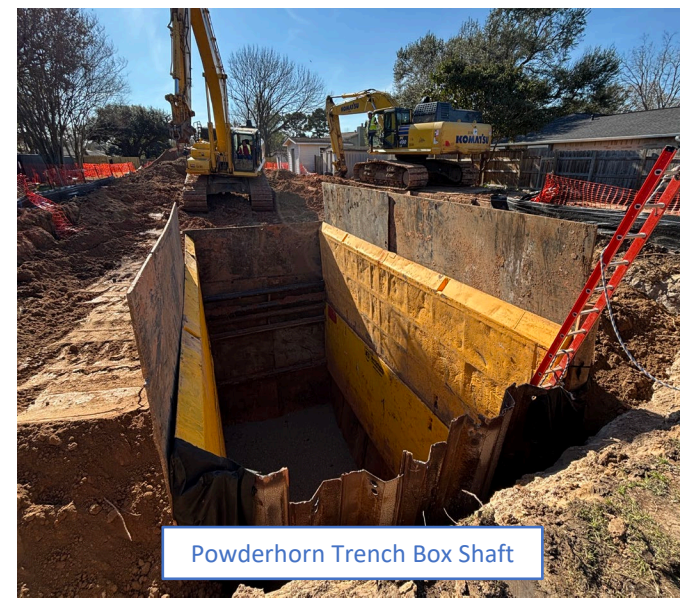
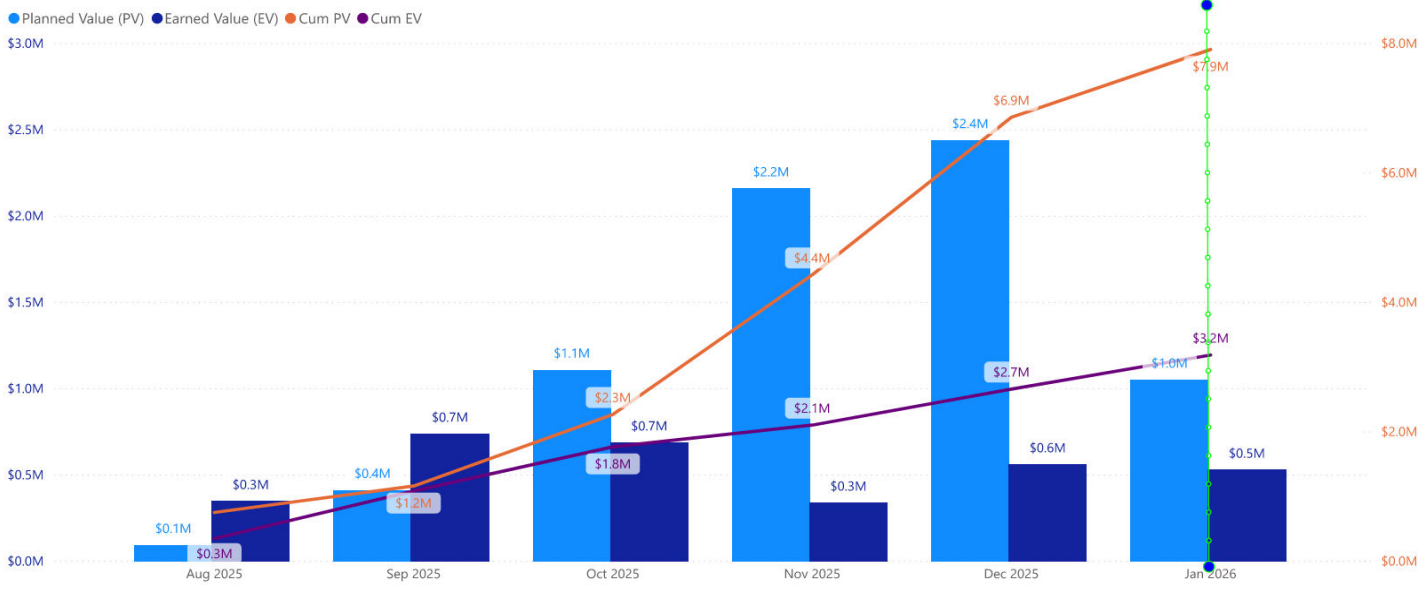
Project Name

KM5

8/25/2025

1/25/2026

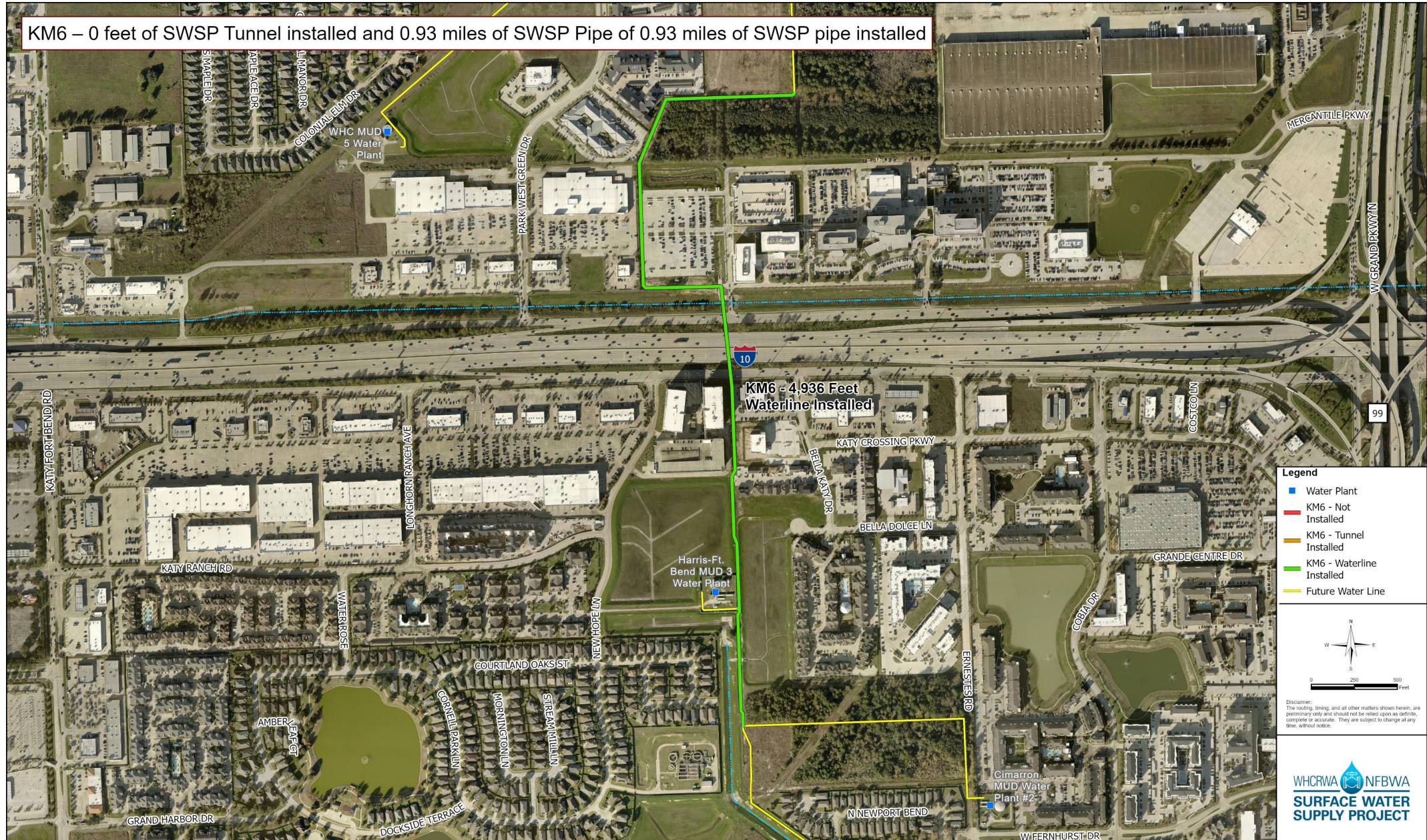
Segment KM-5





# Construction Progress – Kinder Morgan-6

KM6 – 0 feet of SWSP Tunnel installed and 0.93 miles of SWSP Pipe of 0.93 miles of SWSP pipe installed





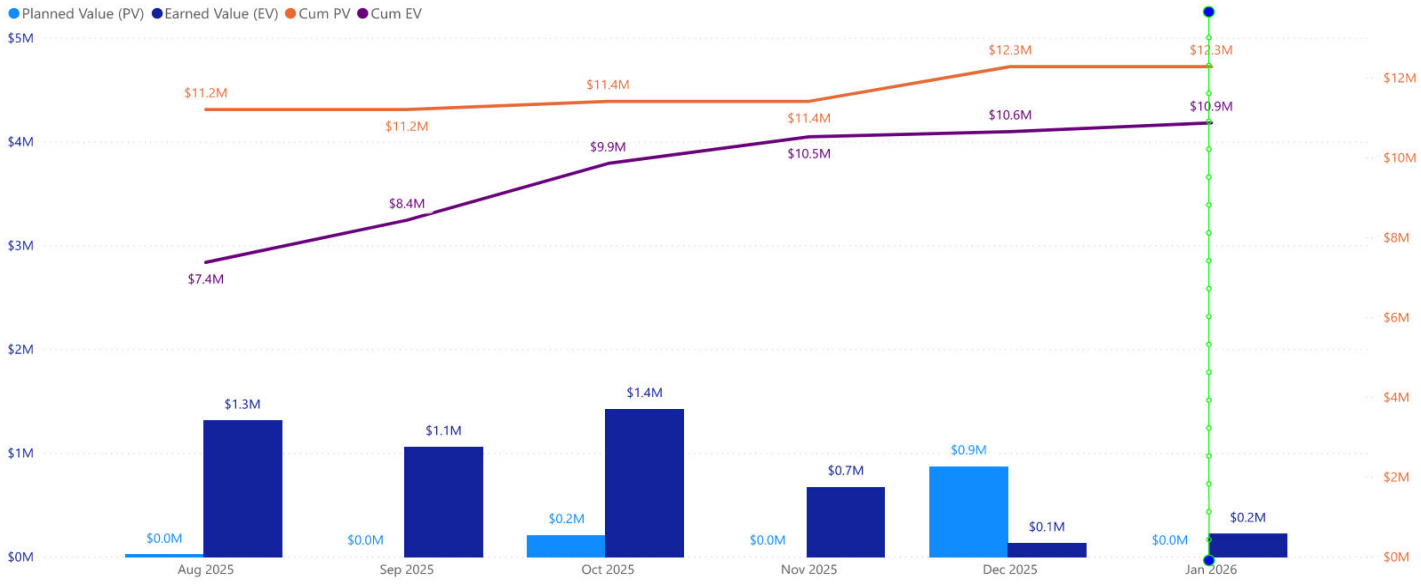
Project Name  
KM6

8/25/2025 1/25/2026



# SWSP KM-6

## Segment KM-6





Project Name  
CPS  
8/25/2025  
1/25/2026

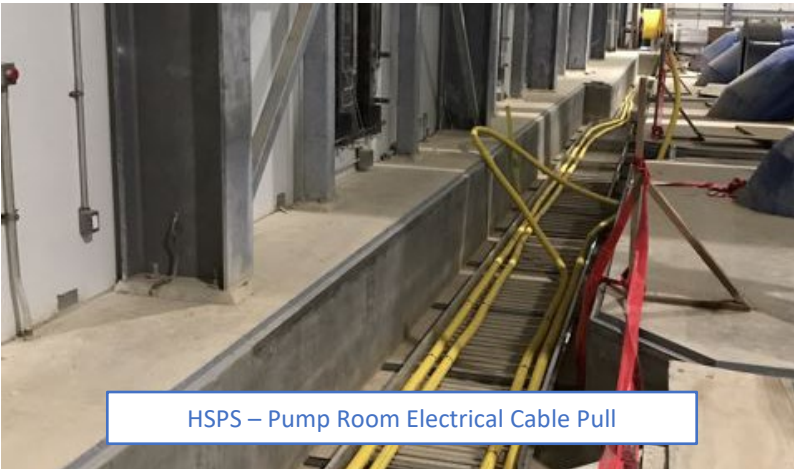


# SWSP Central Pump Station

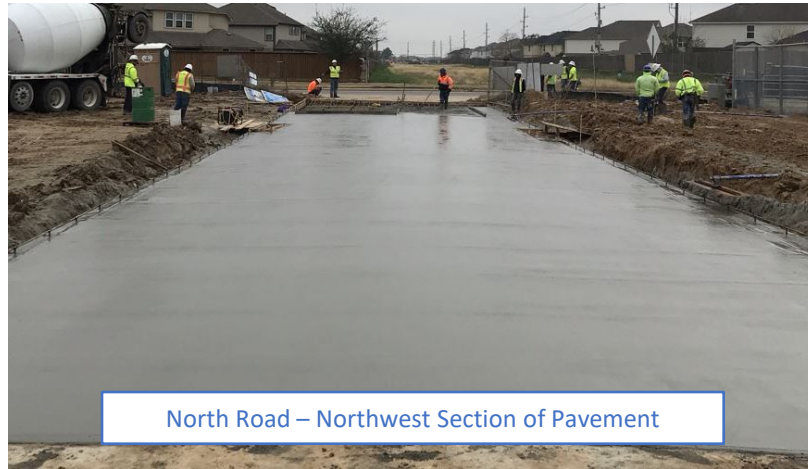
## Central Pump Station



CPS Site Progress



HSPS – Pump Room Electrical Cable Pull



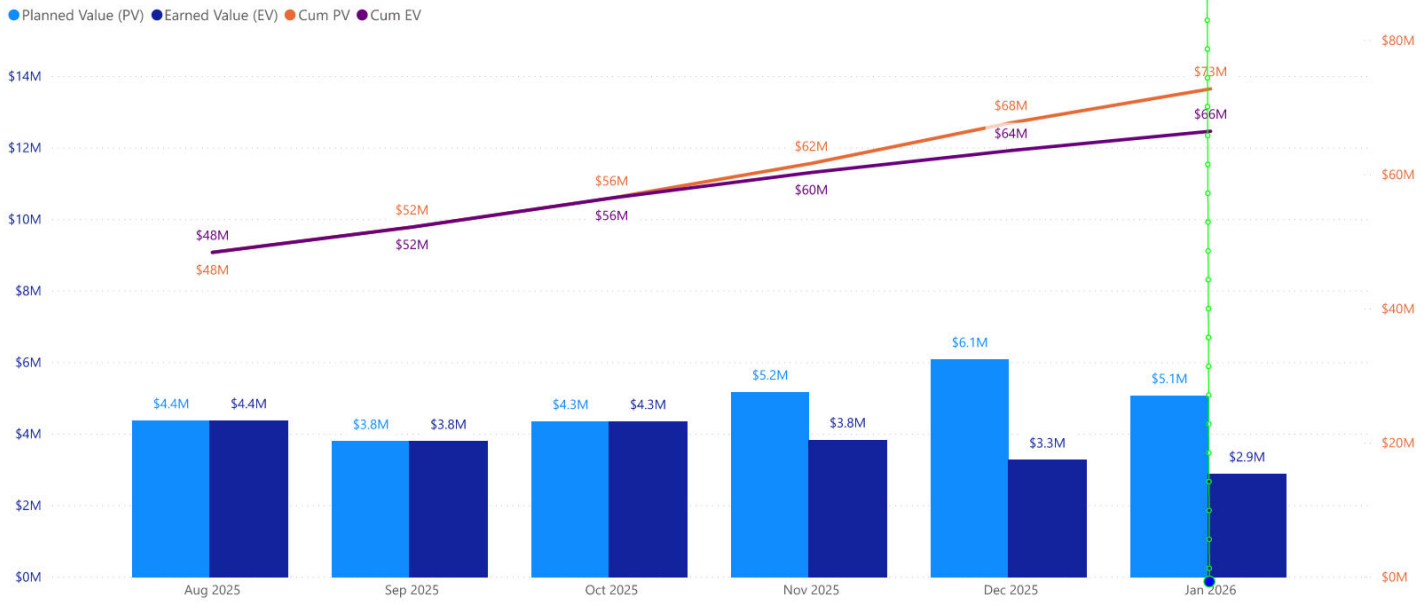
North Road – Northwest Section of Pavement



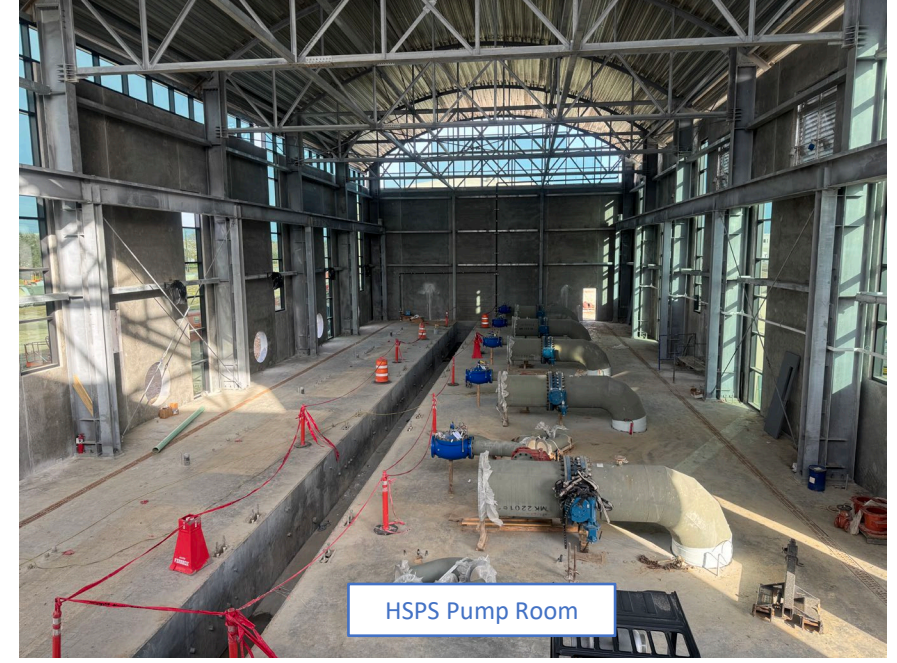
Site Fencing Install – North of Operations Bldg.



# Re-Pump Station



## SWSP Repump Station



HSPS Pump Room



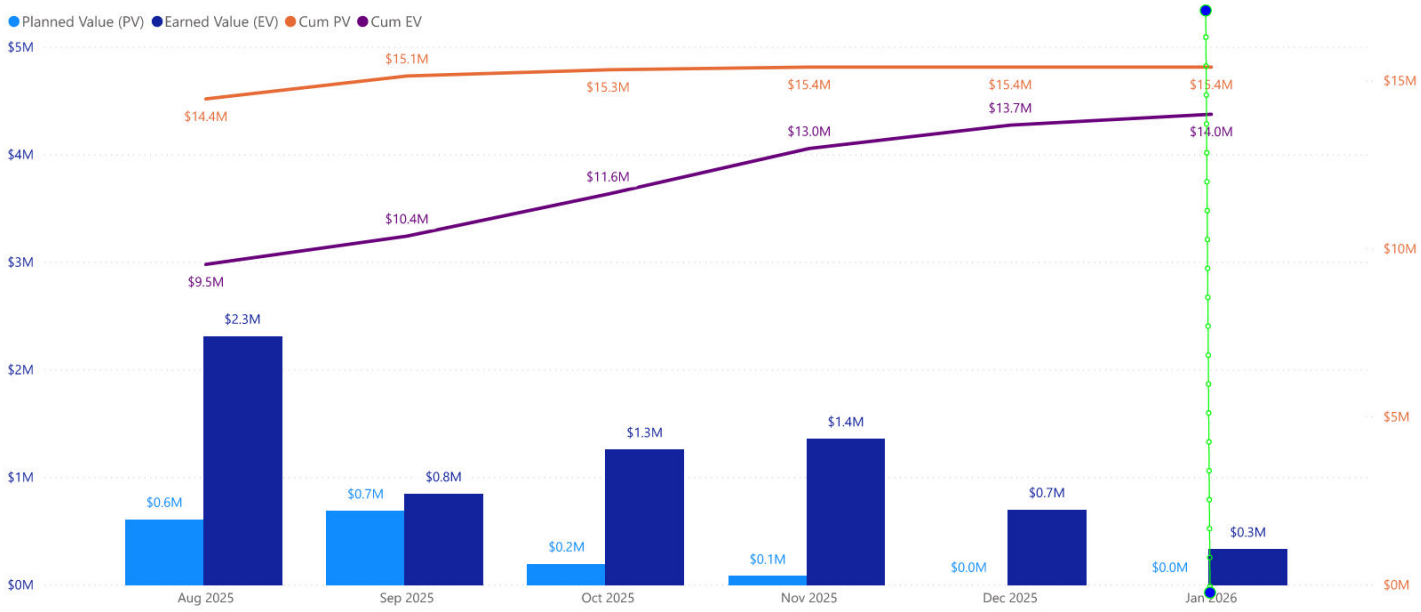
High Service Pump Station (HSPS) Building



Static Mixer During Internal Pipe Inspections



NE Meter Station



SWSP Northeast Meter Station





# SWSP I-10 METER STATION



Detention Pond Grading Complete



Swales Installed



Road Grading Complete



# CIP CONTRACTS



Contract 65 – 60-Inch Butterfly Valve Installation



Contract 64 – Microtunneling Machine On-Site



Contract 64 – MUD 167 Meter Station Work



Contract 64 – Installing Waterline