

October 2025 Monthly Construction Status Report

Updated: 11.07.2025



RPS – Pump Station Steel Structure

WHCRWA Ongoing Construction Projects

Segment B1-B2

3 MILES OF 84-INCH DIAMETER AND 8 MILES OF 96-INCH WATERLINES FROM WEST OF BRITTMOORE ROAD TO WEST OF I-45

Segment B3

4.4 MILES OF 96-INCH DIAMETER WATER LINES FROM WEST OF I-45 TO THE SOUTH SIDE OF HOPPER RD. VIA TUNNEL

Central Pump Station

CONSTRUCTION OF A CENTRAL PUMP STATION THAT WILL RECEIVE WATER FROM THE RE-PUMP STATION AND THEN TRANSFER WATER TO MUDS

Segment A1-A2

11 MILES OF 96-INCH WATER LINE FROM HOPPER RD. TO THE WHCRWA METER STATION NEAR THE NEWPP

RePump Station

CONSTRUCTION OF A 160 MGD REPUMP STATION FACILITY INCLUDING TWO 10 MILLION GALLON TANKS

NorthEast Meter Station

CONSTRUCTION OF A METER STATION AT COH/WHCRWA INTERFACE

Kinder Morgan 1, 2, 3, 4, 5, & 6 - (6 Projects)

6 MILES OF 66-INCH AND 1,300 LF OF 84-INCH WATERLINE FROM SEGMENT C1 CONNECTION TO THE I-10 METER STATION

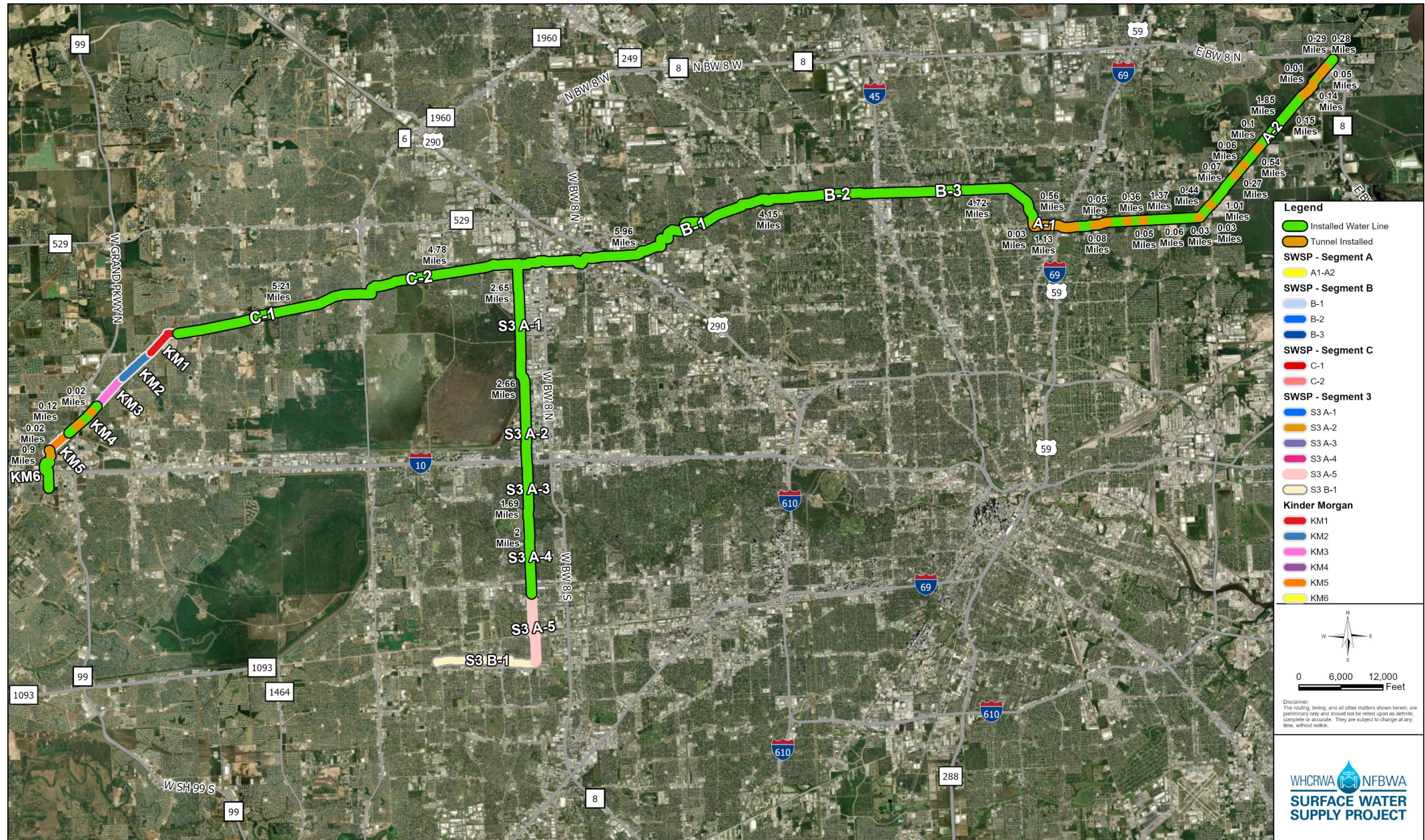
I-10 Meter Station

CONSTRUCTION OF A METER STATION AT THE NFBWA INTERFACE

CIP Projects

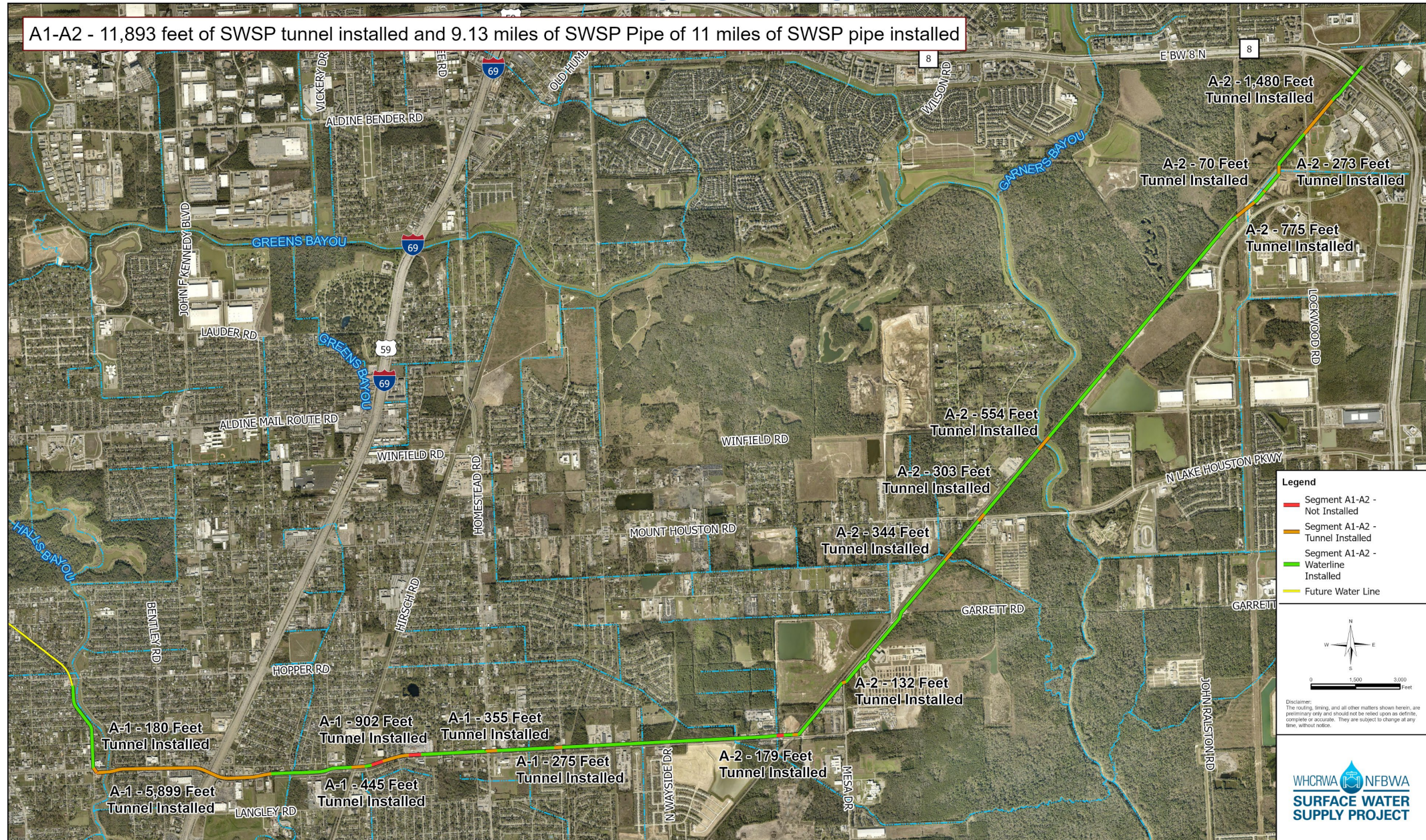
CONTRACTS 51, 63, 64, & 65

Current SWSP Construction Projects Overview



Construction Progress – Segment A1-A2

A1-A2 - 11,893 feet of SWSP tunnel installed and 9.13 miles of SWSP Pipe of 11 miles of SWSP pipe installed



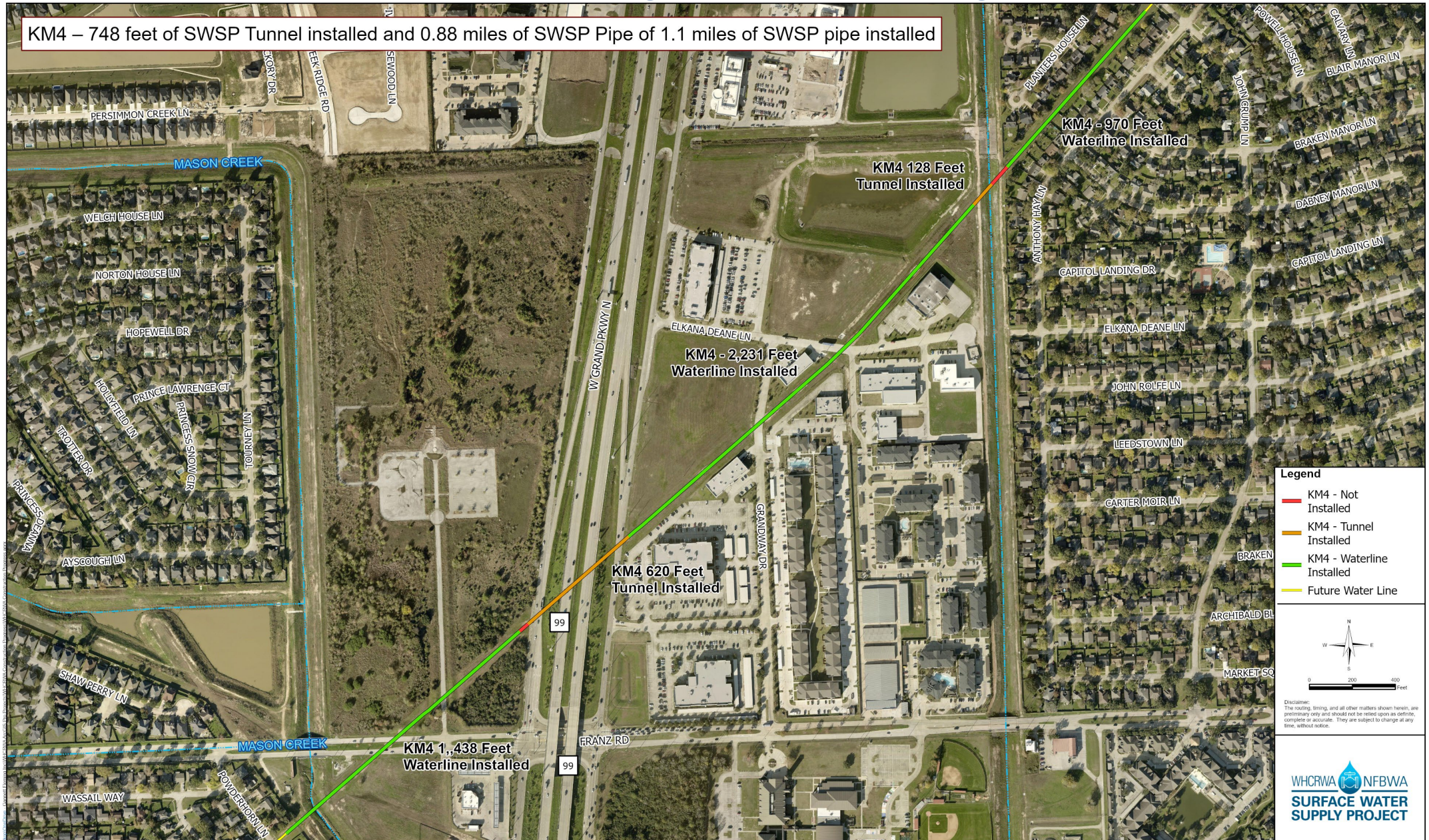
SWSP Contract Segment A1-A2 - Construction Progress

WHCWA NFBWA
SURFACE WATER
SUPPLY PROJECT

GANNETT
FLEMING

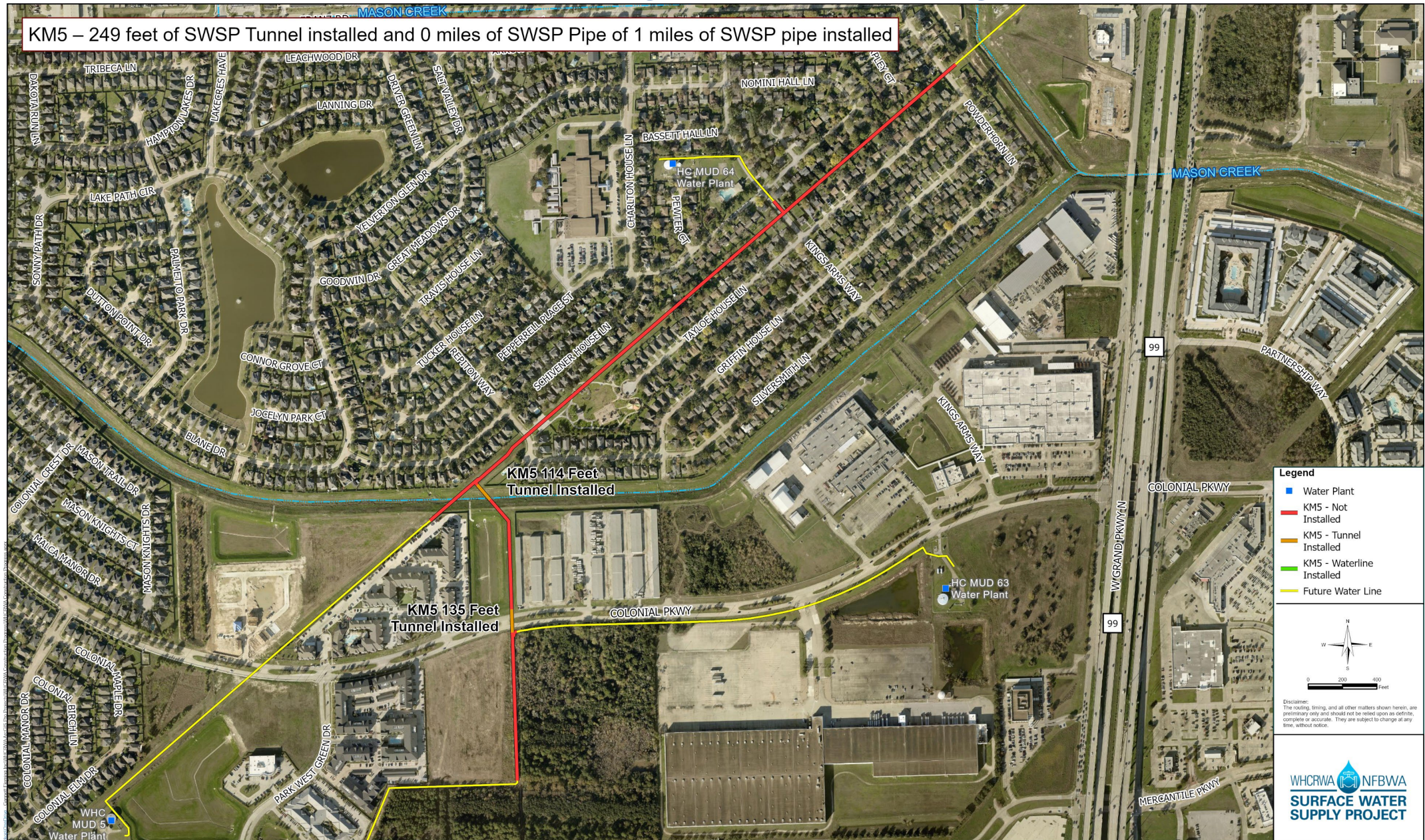
Construction Progress – Kinder Morgan-4

KM4 – 748 feet of SWSP Tunnel installed and 0.88 miles of SWSP Pipe of 1.1 miles of SWSP pipe installed



Construction Progress – Kinder Morgan-5

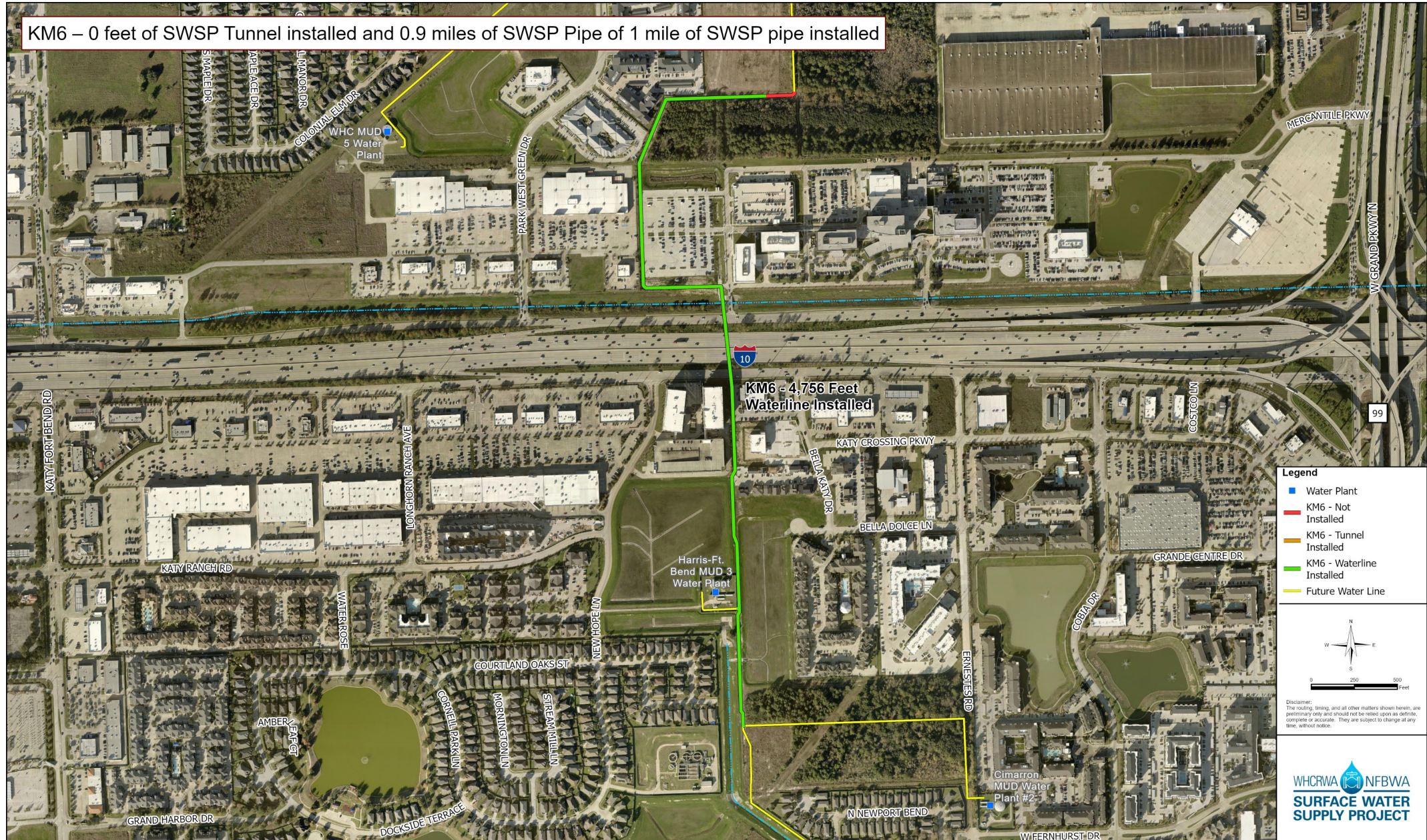
KM5 – 249 feet of SWSP Tunnel installed and 0 miles of SWSP Pipe of 1 miles of SWSP pipe installed



Kinder Morgan 5 - Construction Progress

Construction Progress – Kinder Morgan-6

KM6 – 0 feet of SWSP Tunnel installed and 0.9 miles of SWSP Pipe of 1 mile of SWSP pipe installed



Kinder Morgan 6 - Construction Progress



WHCRWA NFBWA SURFACE WATER SUPPLY PROJECT

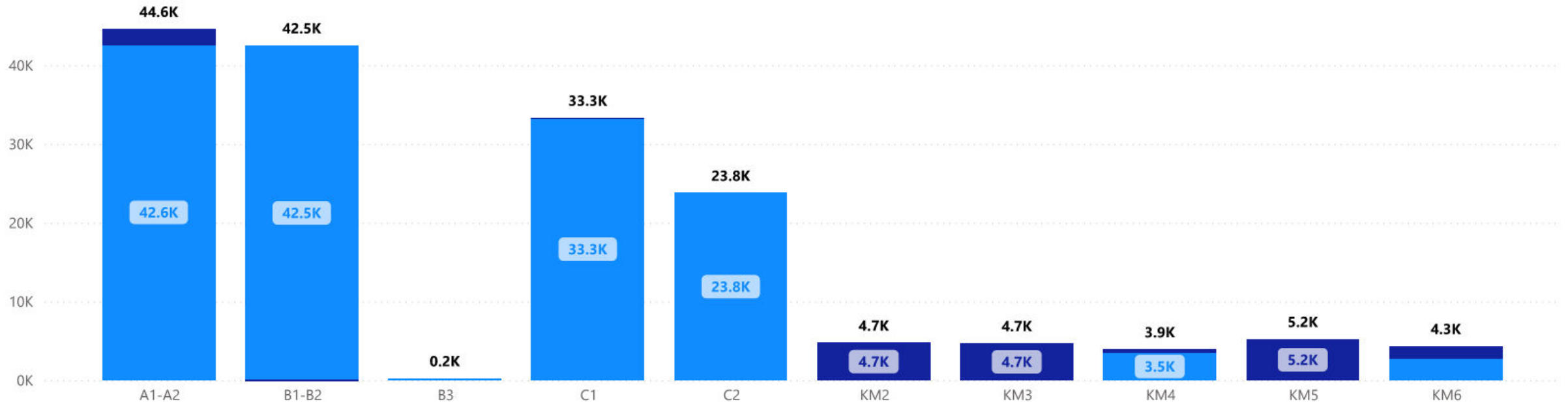
Open Cut (LF) by Project

188K
Installed

19K
Remaining

ProjectID	Bid Quantity (LF)
A1-A2	44,582
B1-B2	42,456
B3	210
C1	33,292
C2	23,760
KM2	4,720
KM3	4,666
KM4	3,880
KM5	5,198
KM6	4,301
S3-A1	12,750
S3-A2	11,402
S3-A3	5,670
S3-A4	9,882
Total	206,769

● Installed (LF) ● Remaining (LF)





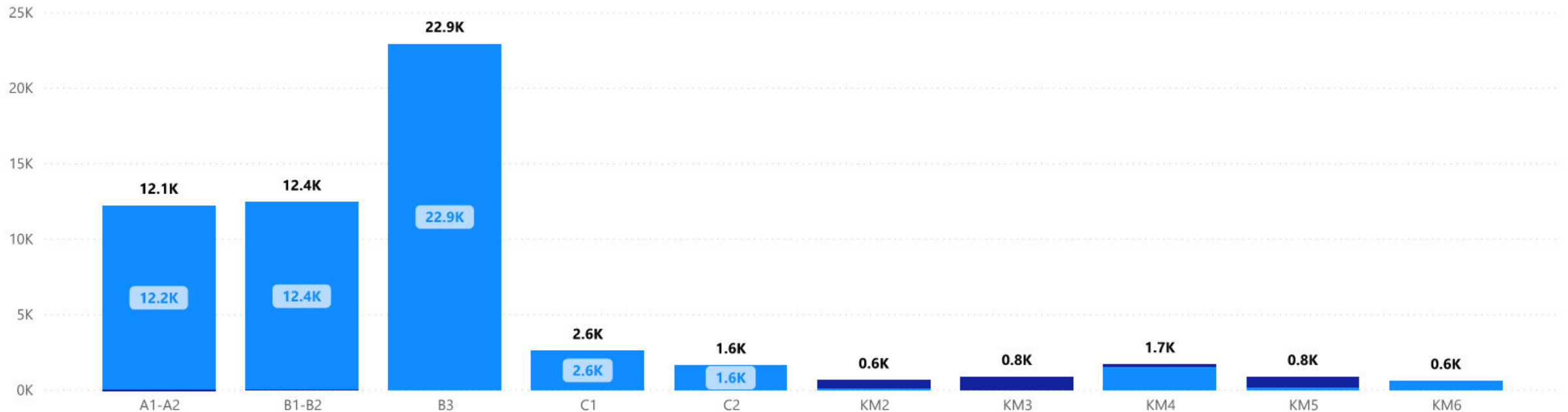
Tunneling (LF) by Project

62K
Installed

2K
Remaining

ProjectID	Bid Quantity (LF)
A1-A2	12,127
B1-B2	12,384
B3	22,885
C1	2,554
C2	1,599
KM2	611
KM3	834
KM4	1,665
KM5	831
KM6	563
S3-A1	1,270
S3-A2	2,626
S3-A3	3,076
S3-A4	1,198
Total	64,223

● Installed (LF) ● Remaining (LF)



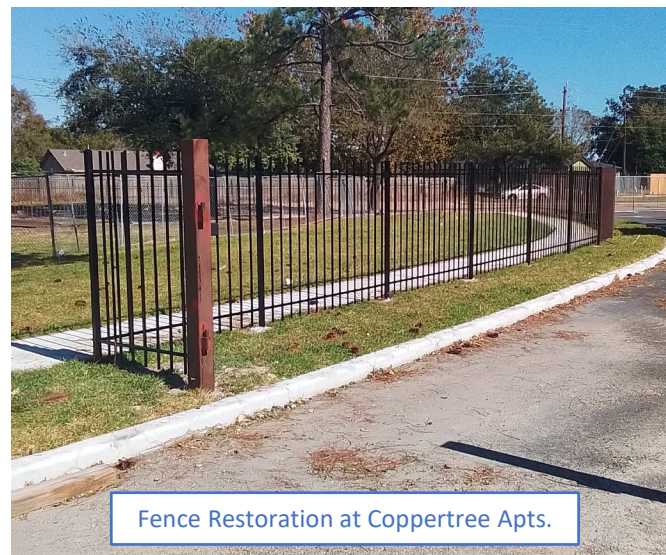
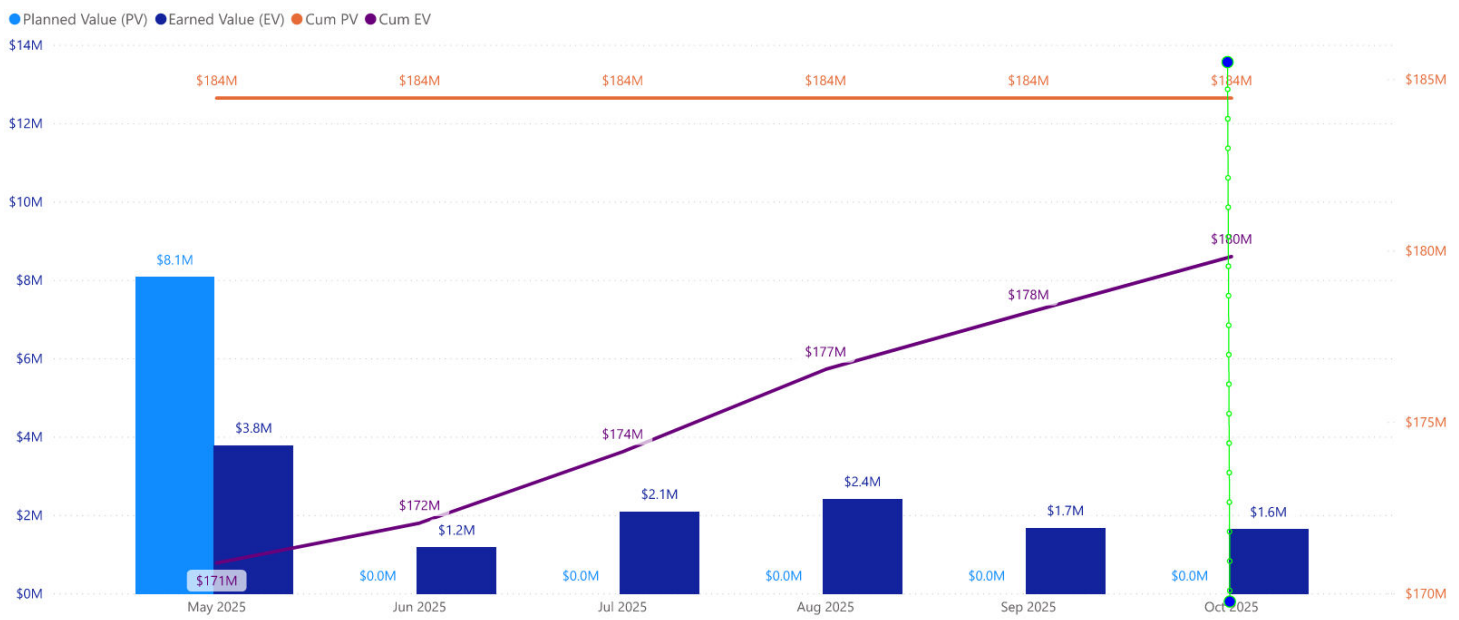
Project Name

B1-B2

5/25/2025

10/25/2025

Segment B1|B2



SWSP Segment B1-B2

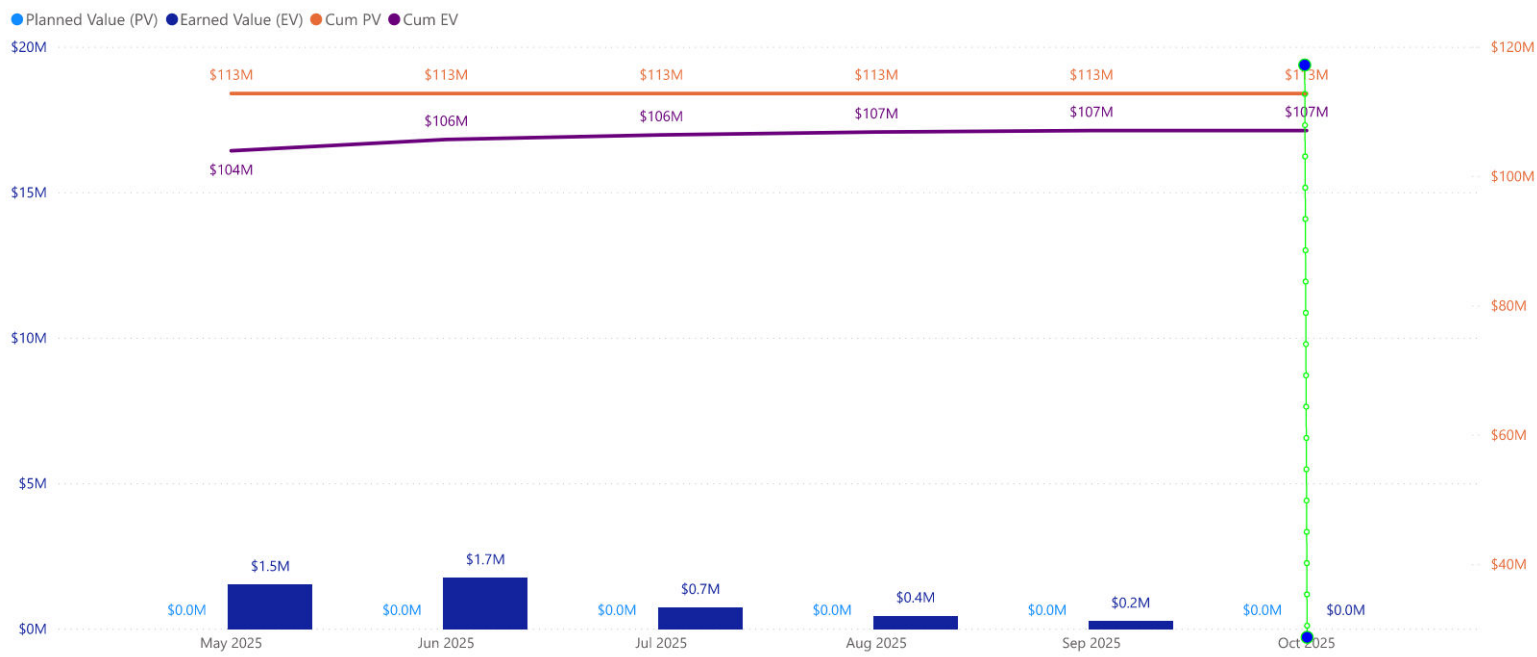


Project Name
B3

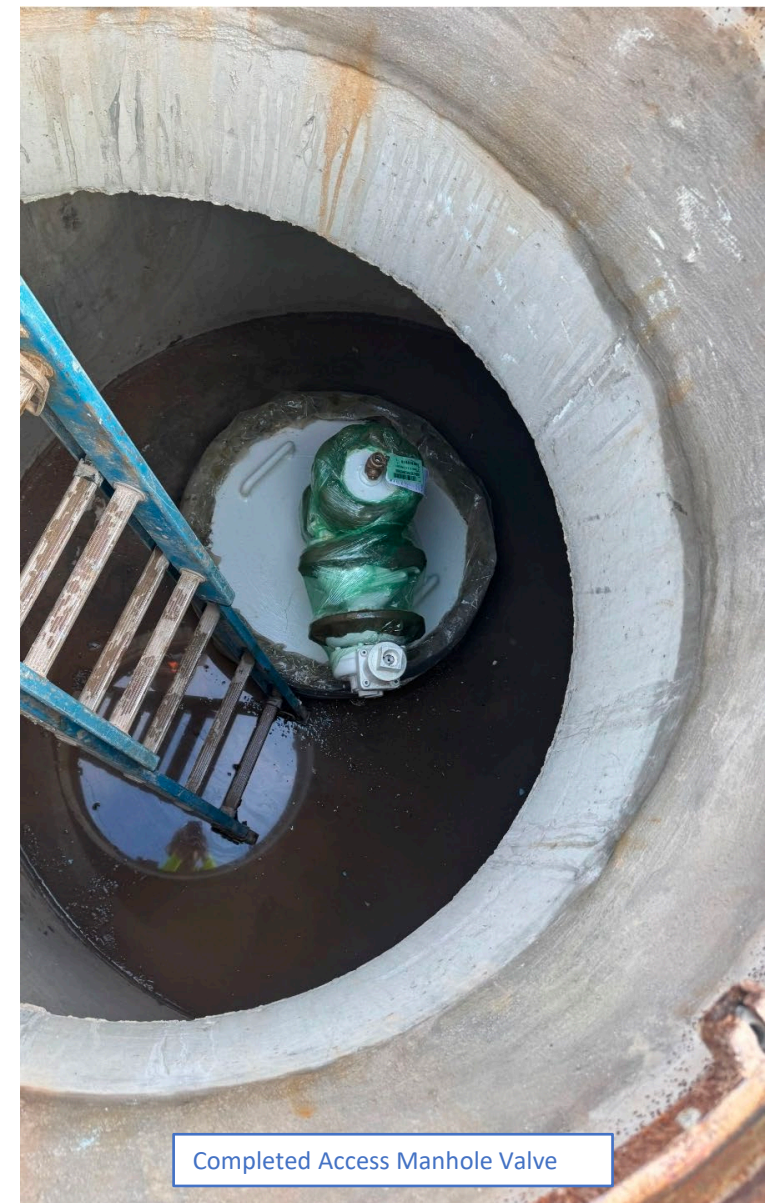
5/25/2025 10/25/2025



Segment B3



SWSP Segment B3



Completed Access Manhole Valve

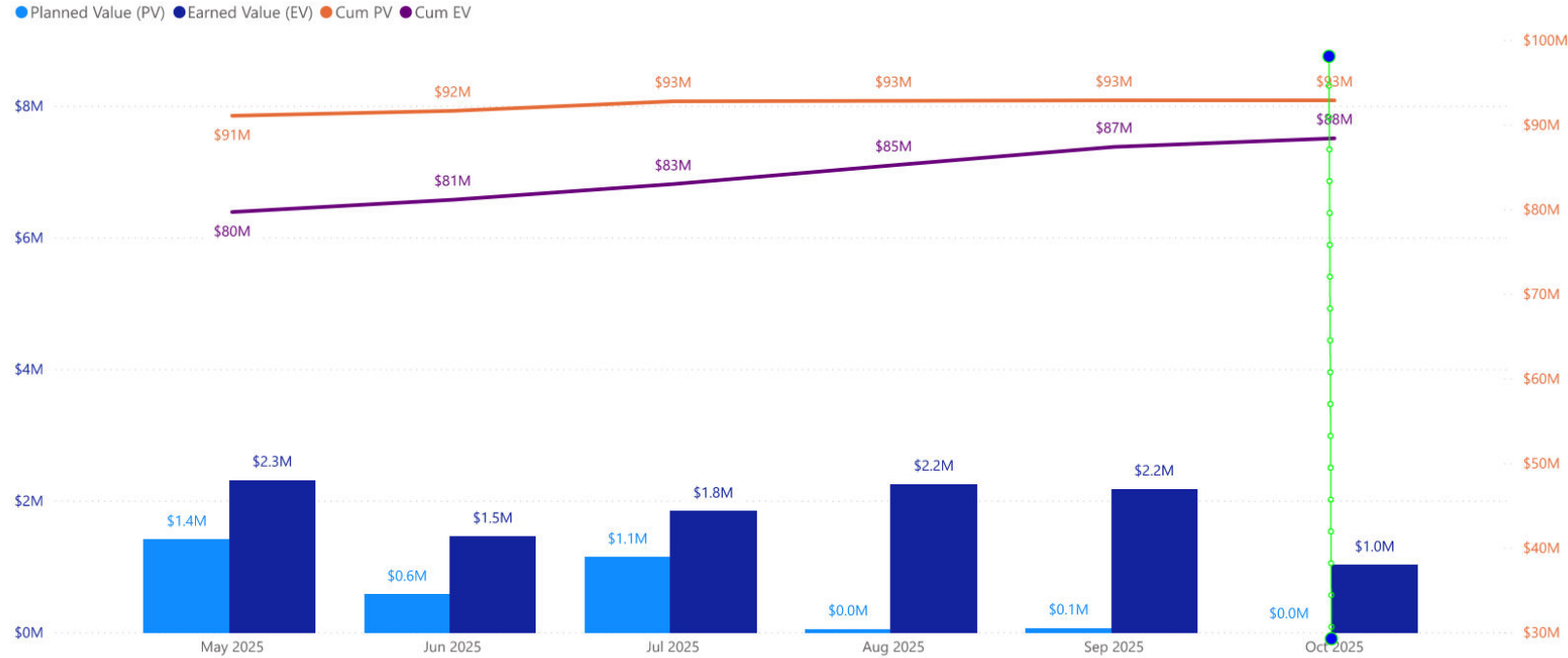


Site 1 – Fencing and Gravel Pavement Completed

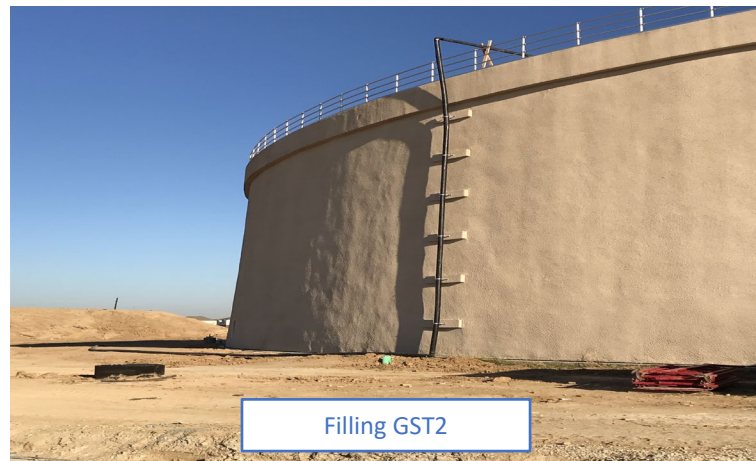


Cathodic Protection Box

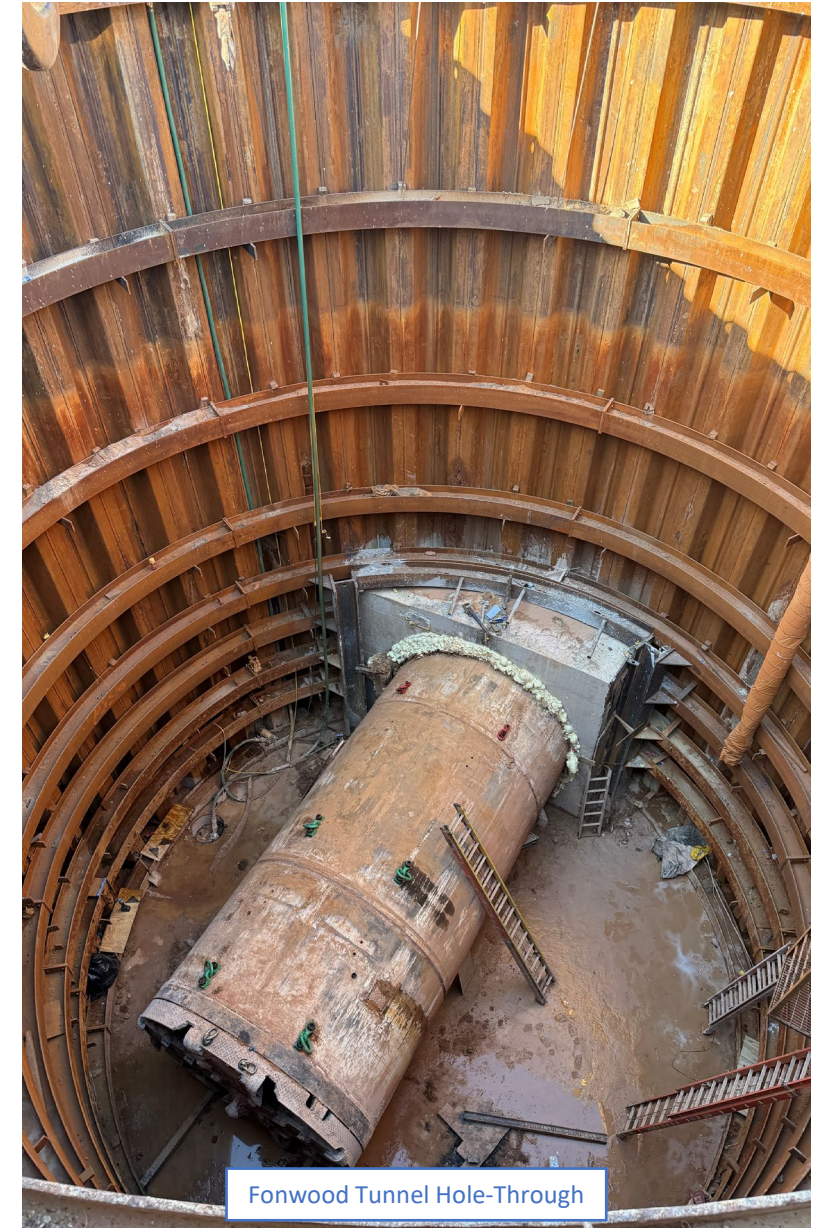
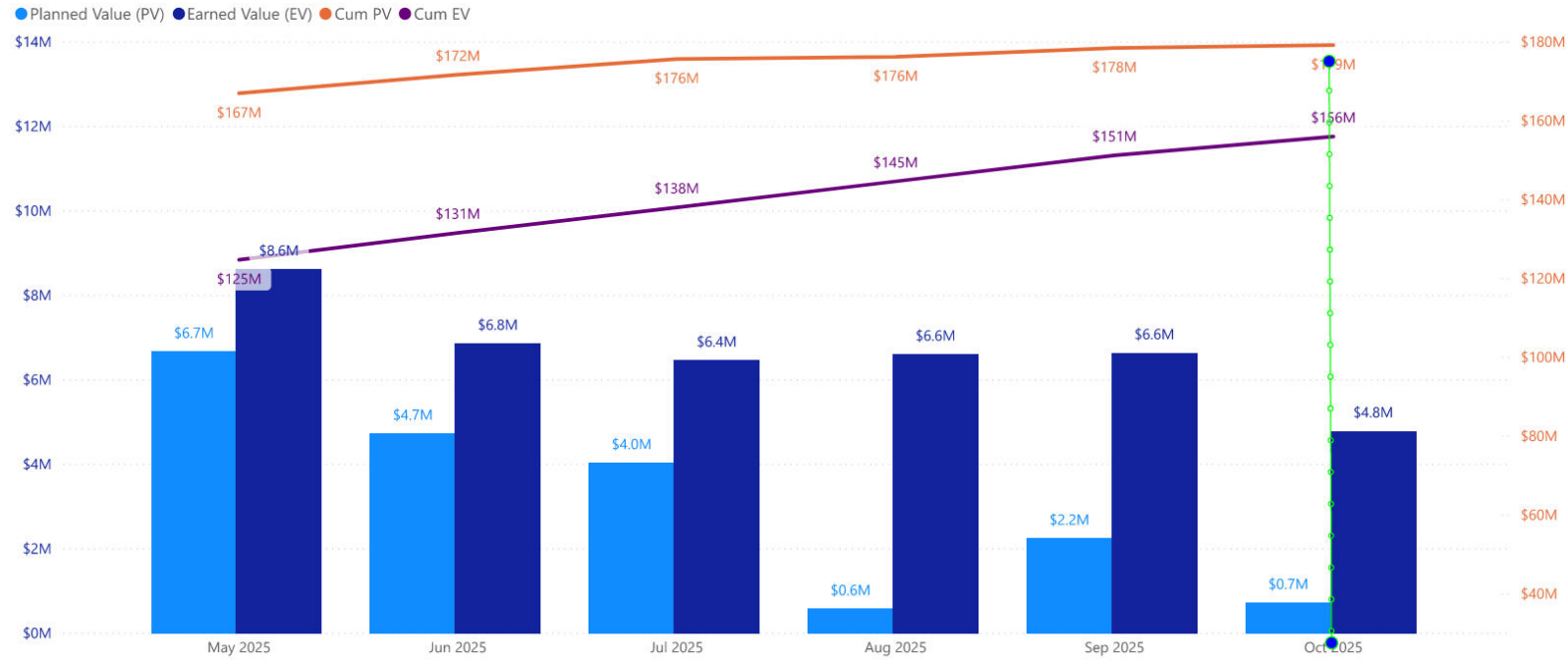
Central Pump Station



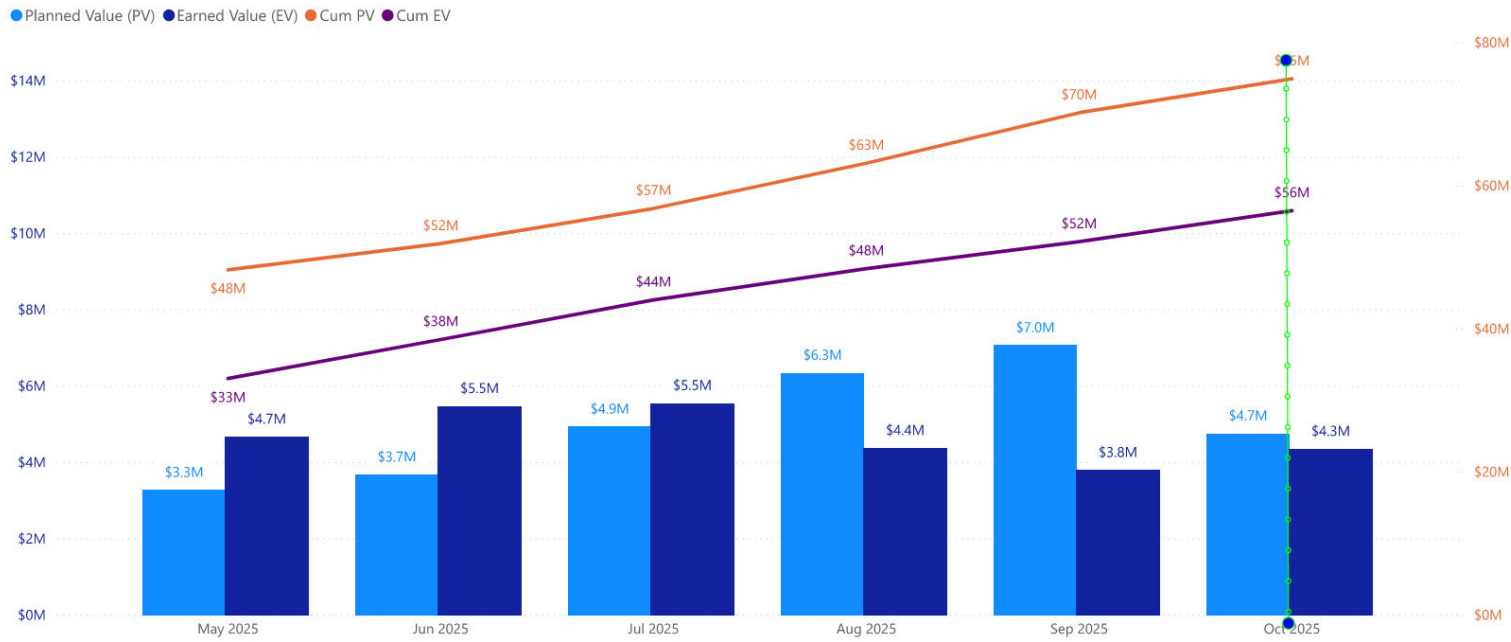
SWSP Central Pump Station



Segment A1|A2



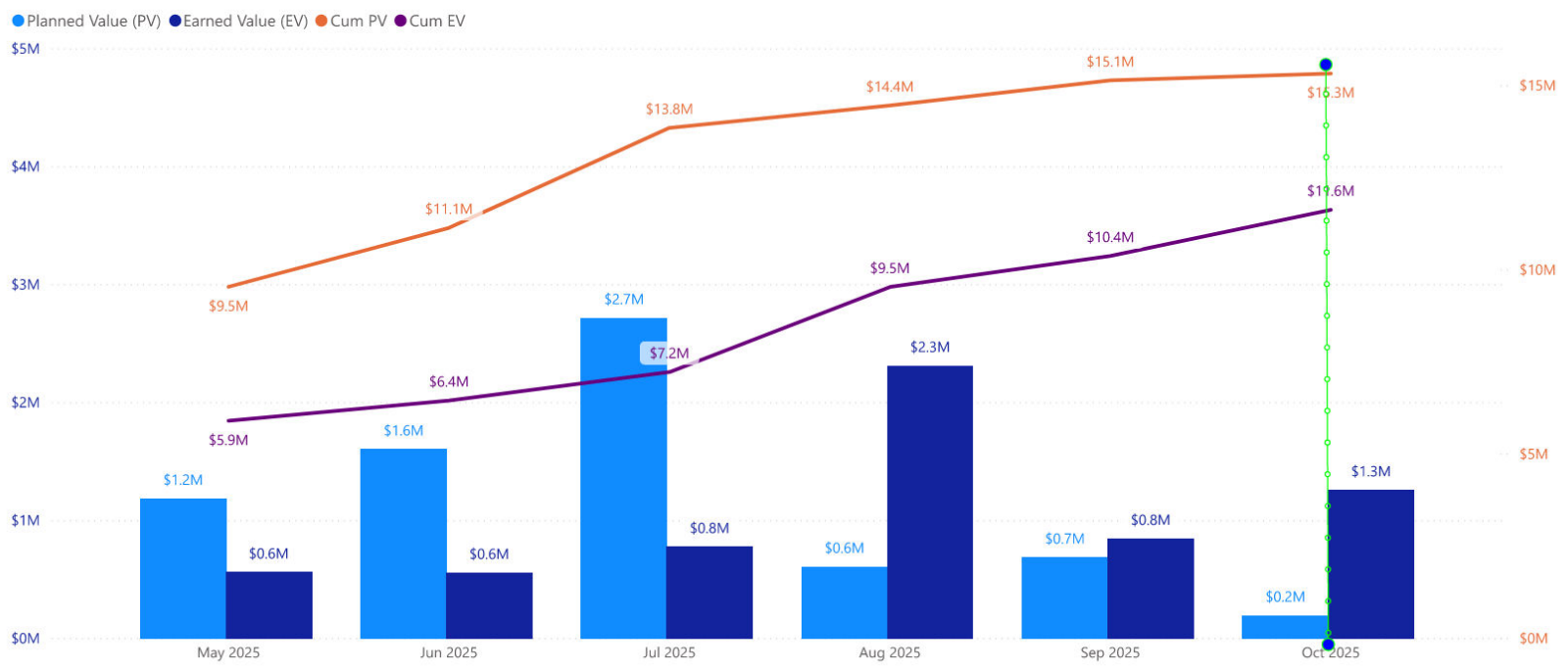
Re-Pump Station



SWSP Repump Station



NE Meter Station



SWSP Northeast Meter Station



Pipe Stored On-Site



Meter Building Roof Poured



36-IN BFVs and Flow Meters Installed

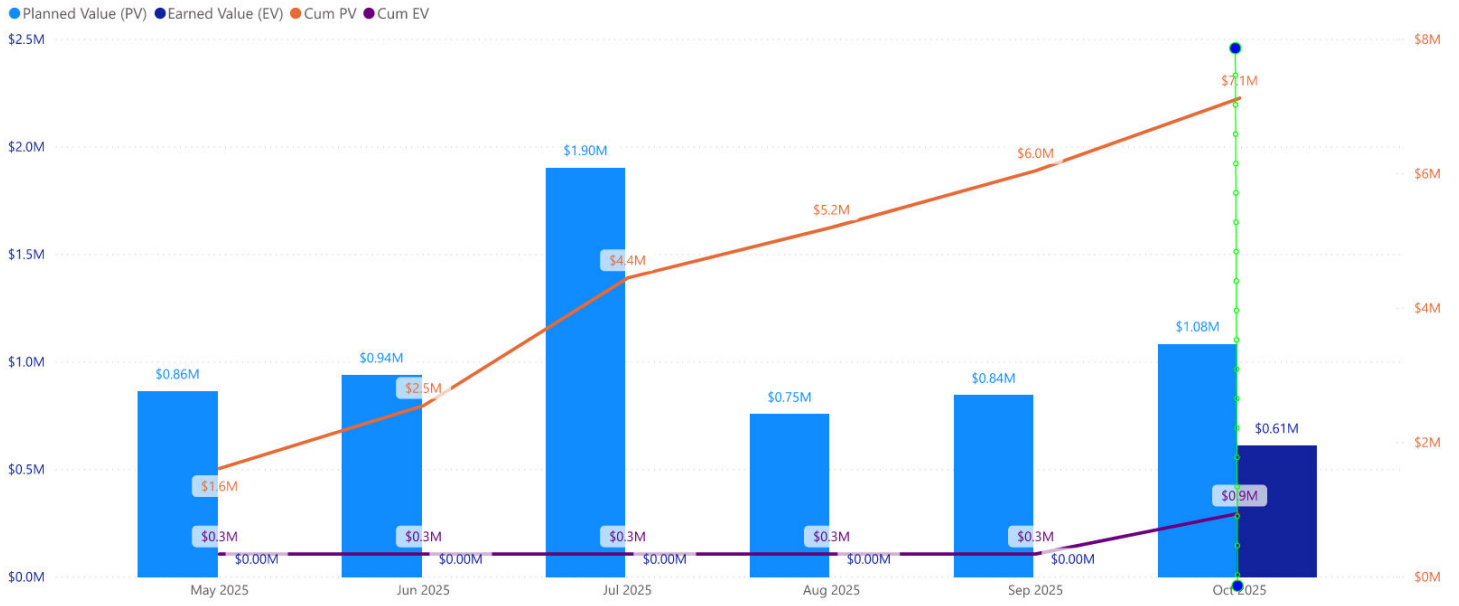
Project Name

KM2

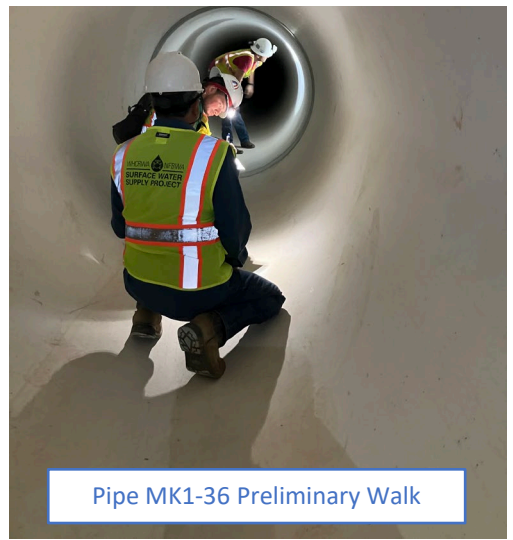
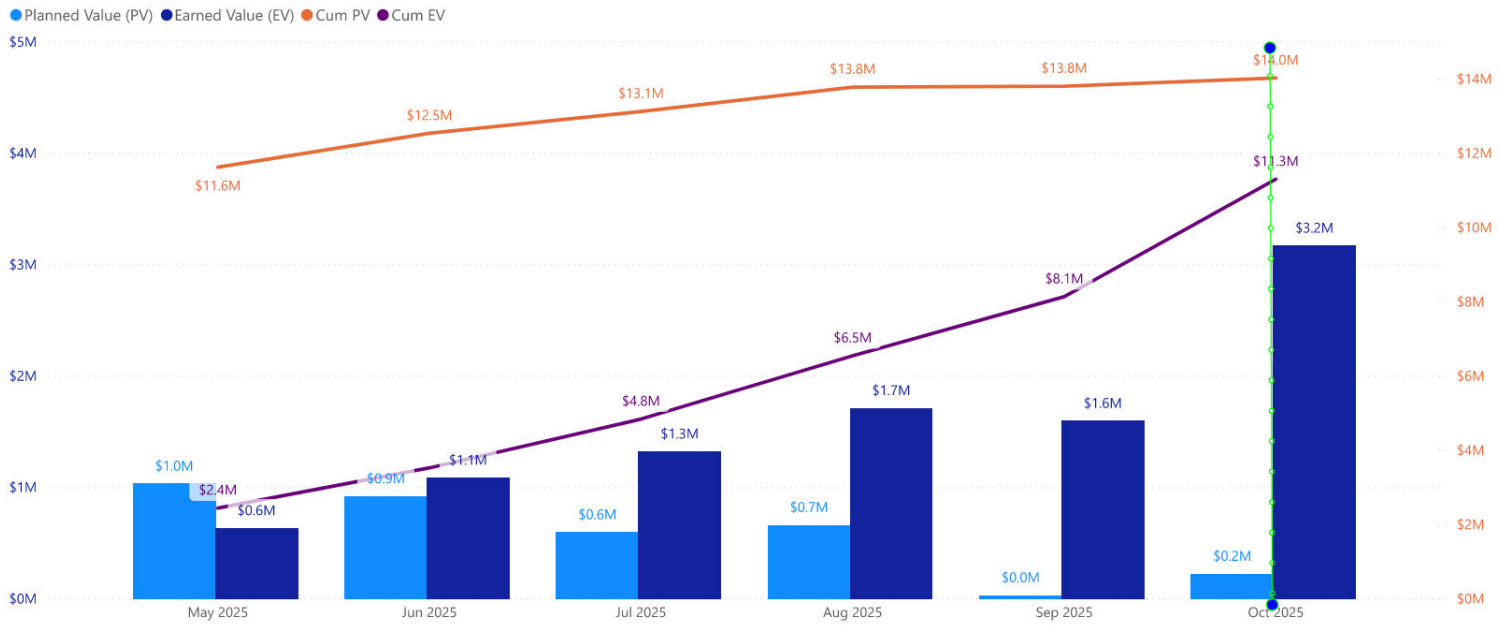
5/25/2025

10/25/2025

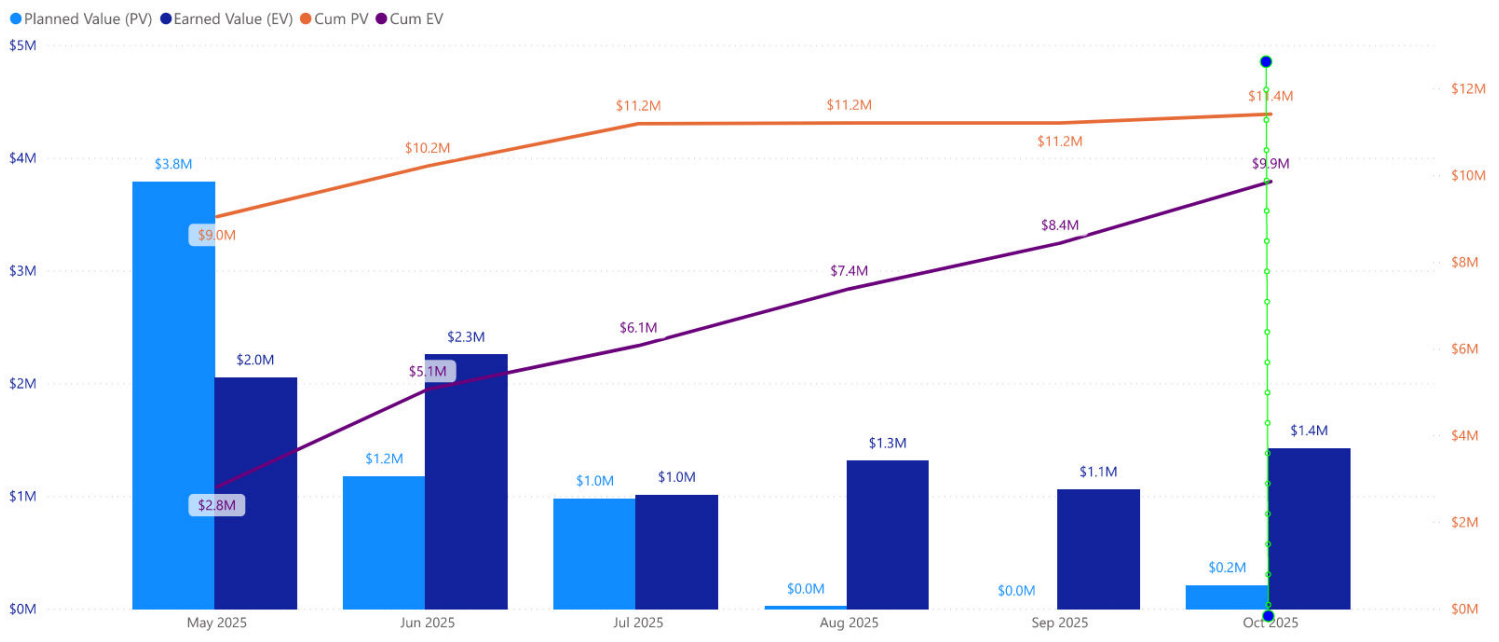
Segment KM-2



Segment KM-4



Segment KM-6



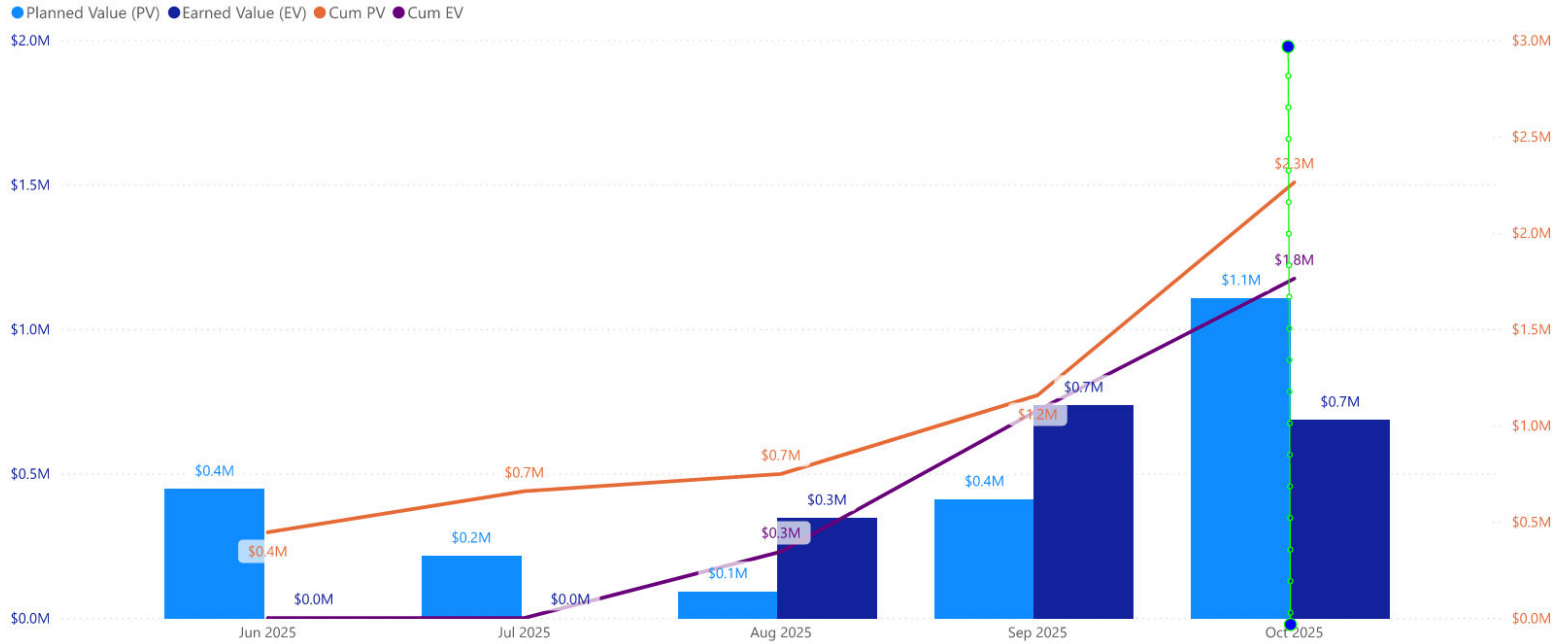
Project Name

KM5

5/25/2025

10/25/2025

Segment KM-5



SWSP KM-5



Mining Complete at Colonial Pkwy Tunnel

Repton Way Receiving Shaft

Mining Operations at HCFCD Tunnel

SWSP I-10 METER STATION



CIP CONTRACTS

