

August 2025 Monthly Construction Status Report

Updated: 09.08.2025



B1-B2 – Final Pipe Segment

WHCRWA Ongoing Construction Projects

Segment B1-B2

3 MILES OF 84-INCH DIAMETER AND 8 MILES OF 96-INCH WATERLINES FROM WEST OF BRITTMORE ROAD TO WEST OF I-45

Segment B3

4.4 MILES OF 96-INCH DIAMETER WATER LINES FROM WEST OF I-45 TO THE SOUTH SIDE OF HOPPER RD. VIA TUNNEL

Central Pump Station

CONSTRUCTION OF A CENTRAL PUMP STATION THAT WILL RECEIVE WATER FROM THE RE-PUMP STATION AND THEN TRANSFER WATER TO MUDS

Segment A1-A2

11 MILES OF 96-INCH WATER LINE FROM HOPPER RD. TO THE WHCRWA METER STATION NEAR THE NEWPP

RePump Station

CONSTRUCTION OF A 160 MGD REPUMP STATION FACILITY INCLUDING TWO 10 MILLION GALLON TANKS

NorthEast Meter Station

CONSTRUCTION OF A METER STATION AT COH/WHCRWA INTERFACE

Kinder Morgan 2

5,350 LINEAR FEET OF 66-INCH AND 60 LINEAR FEET OF 12-IN AND 50 LINEAR FEET OF 48-IN DIAMETER WATER LINES WITHIN THE KINDER MORGAN EASEMENT

Kinder Morgan 4

5,550 LINEAR FEET OF 66-INCH DIAMETER WATER LINES FROM POWDERHORN LANE TO JOHN CRUMP LANE

Kinder Morgan 5

5,520 LINEAR FEET OF 66-INCH DIAMETER WATER LINES FROM KM-6 TO POWDERHORN LANE

Kinder Morgan 6

4,933 LINEAR FEET OF 66-INCH DIAMETER WATER LINES FROM IH-10 METER STATION TO KM-5

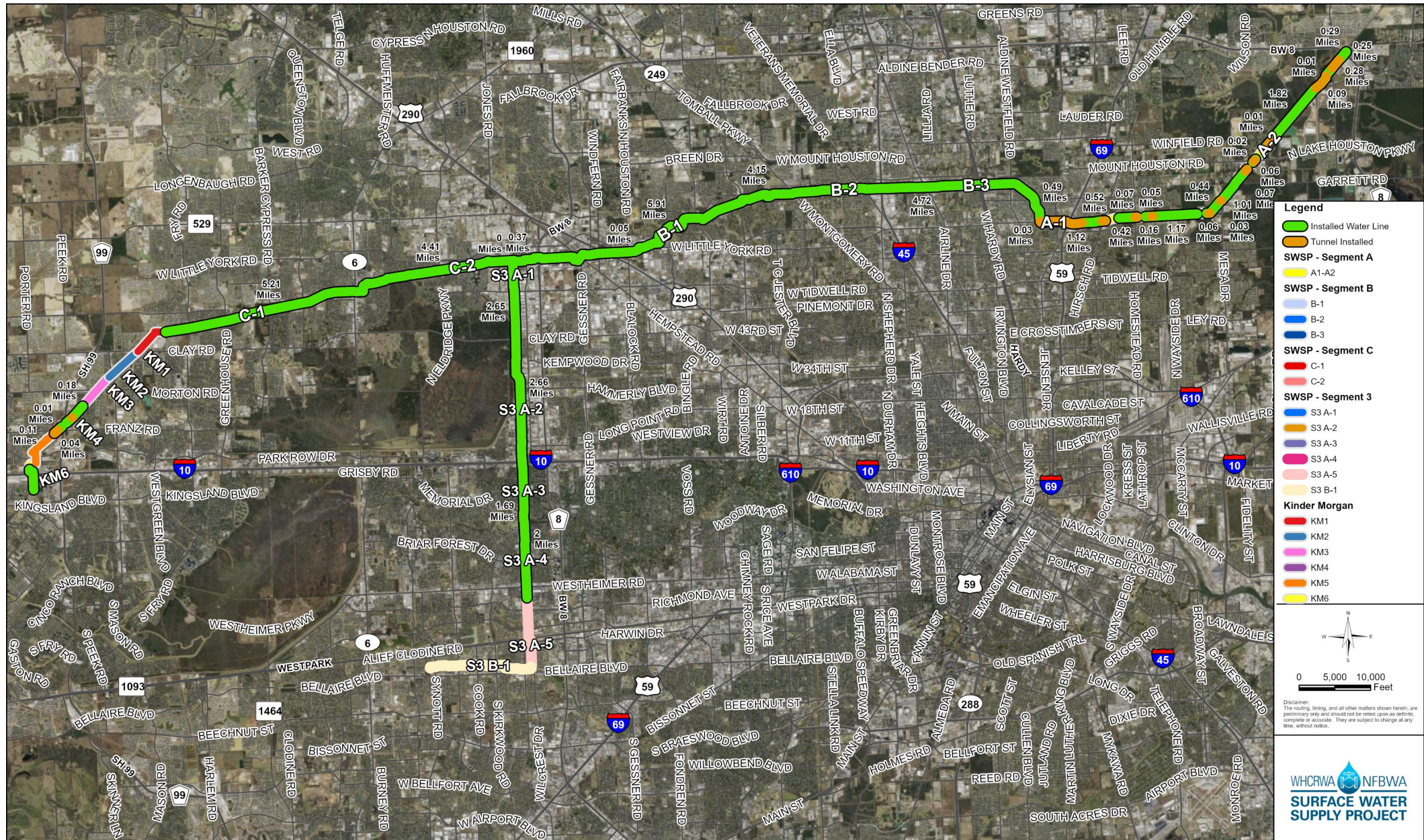
CIP Projects

Contract 51, 63, 64, 65

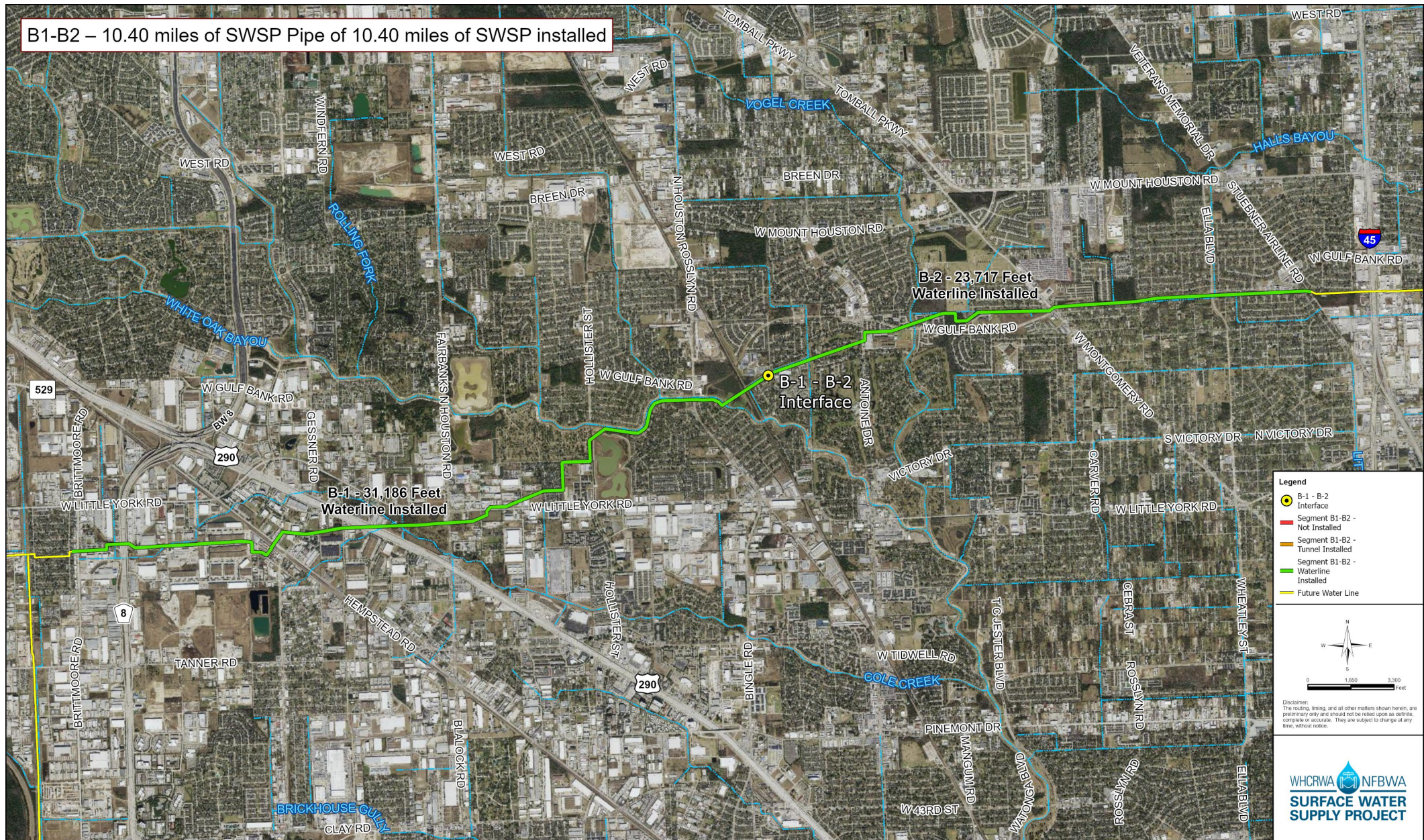
SWSP B1-B2 - Final Pipe Segment



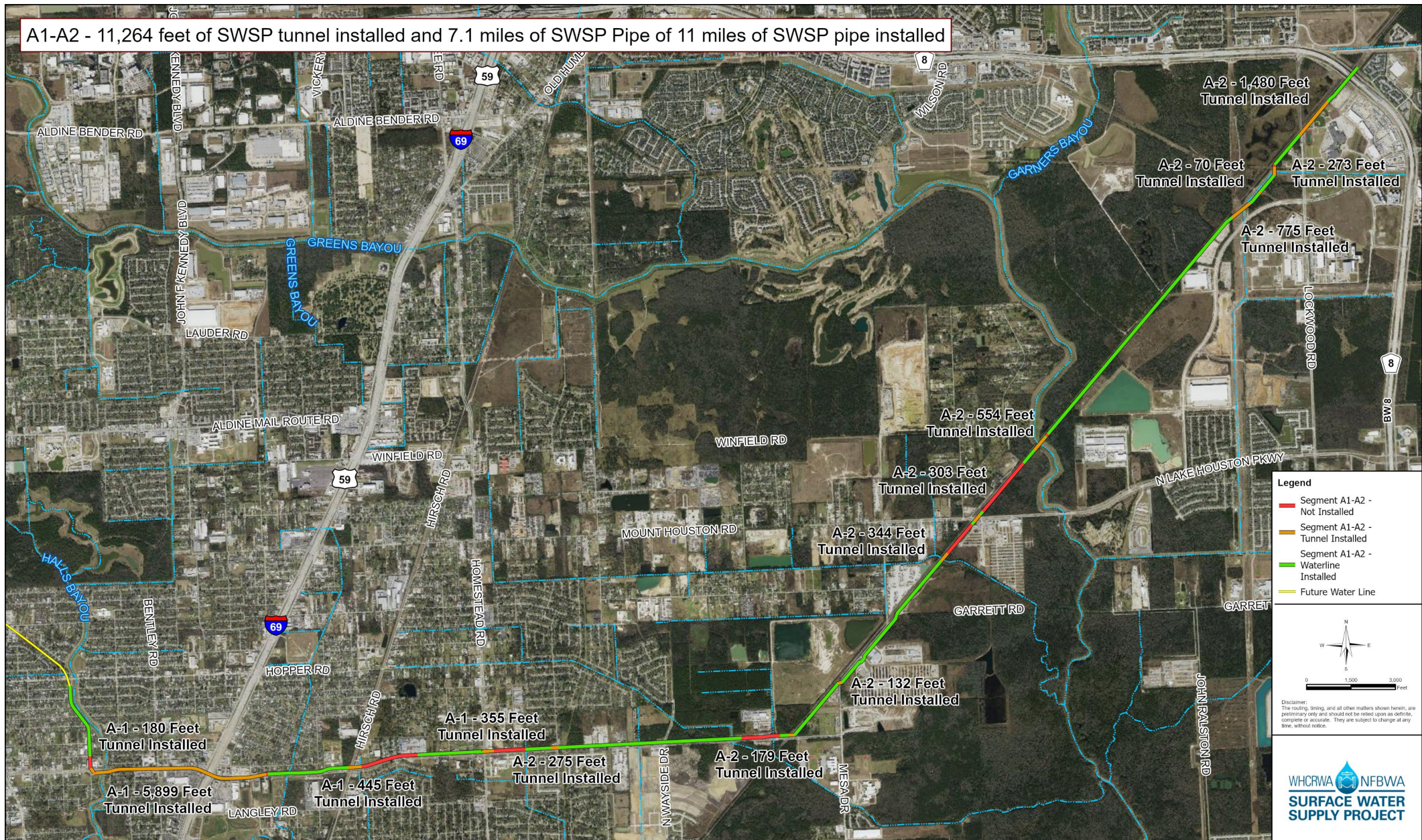
Current SWSP Construction Projects Overview



Construction Progress – Segment B1-B2

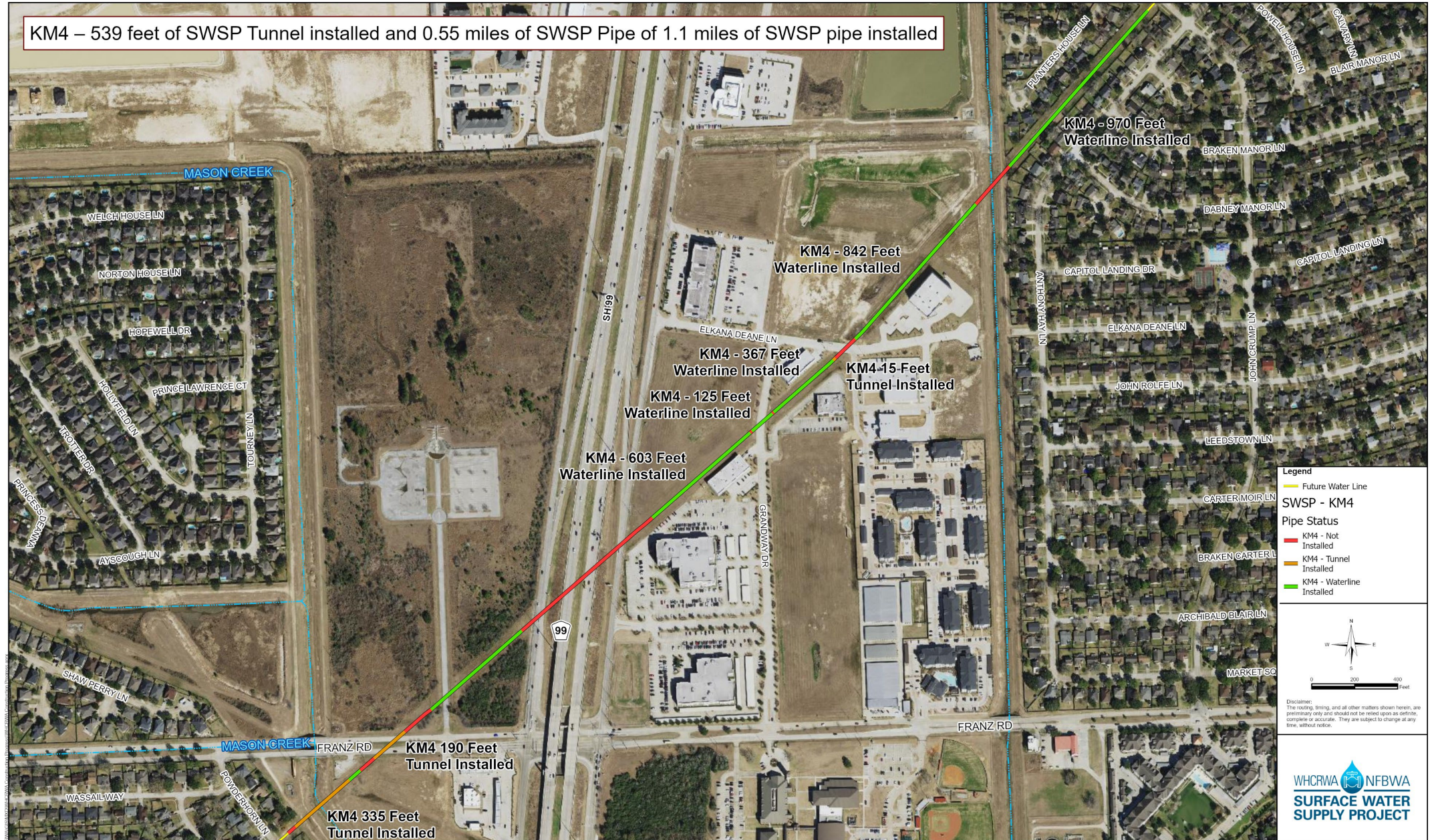


Construction Progress – Segment A1-A2



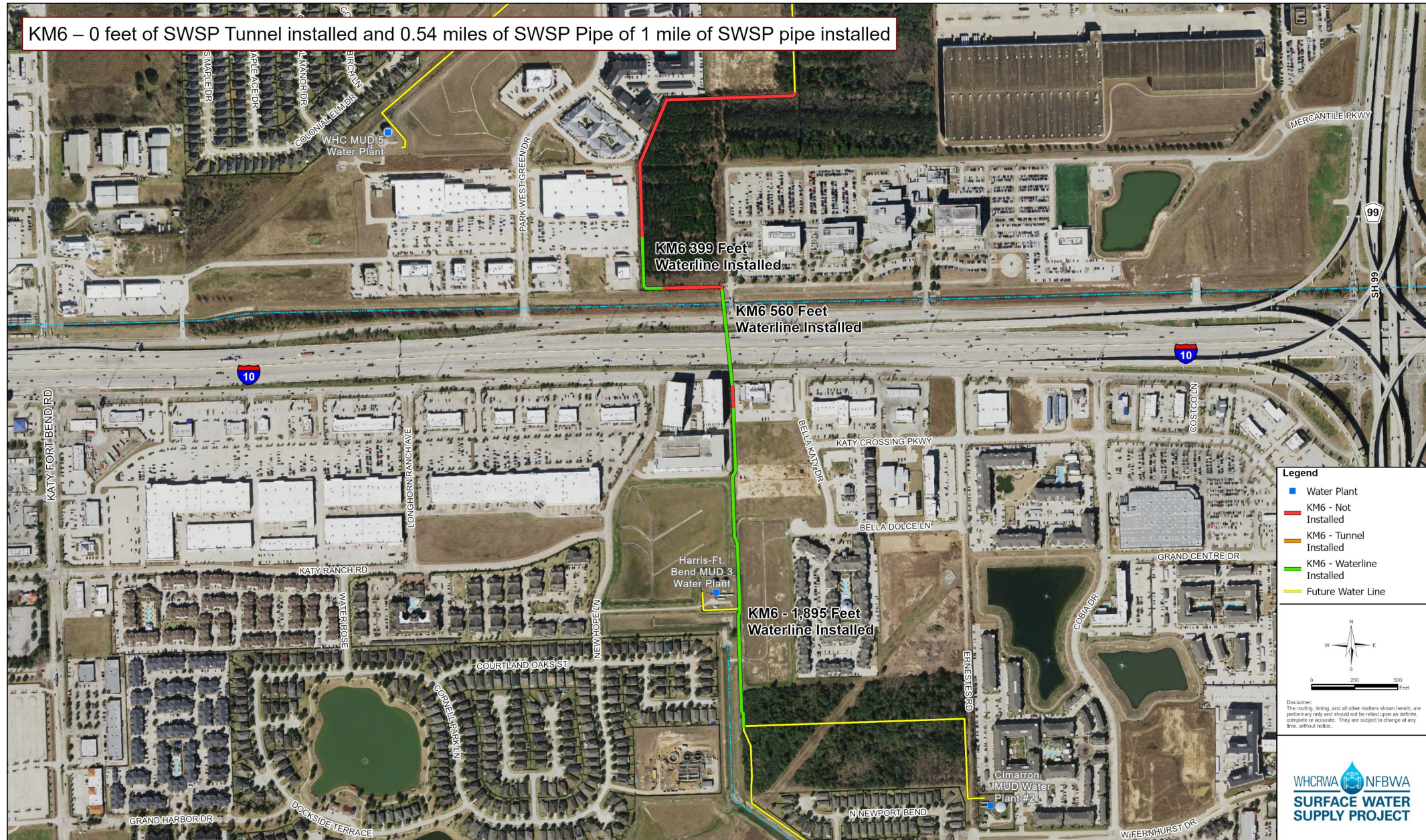
Construction Progress – Kinder Morgan-4

KM4 – 539 feet of SWSP Tunnel installed and 0.55 miles of SWSP Pipe of 1.1 miles of SWSP pipe installed



Kinder Morgan 4 - Construction Progress

Construction Progress – Kinder Morgan-6



Kinder Morgan 6 - Construction Progress

WHCRA NFBWA
SURFACE WATER
SUPPLY PROJECT

GANNETT
FLEMING



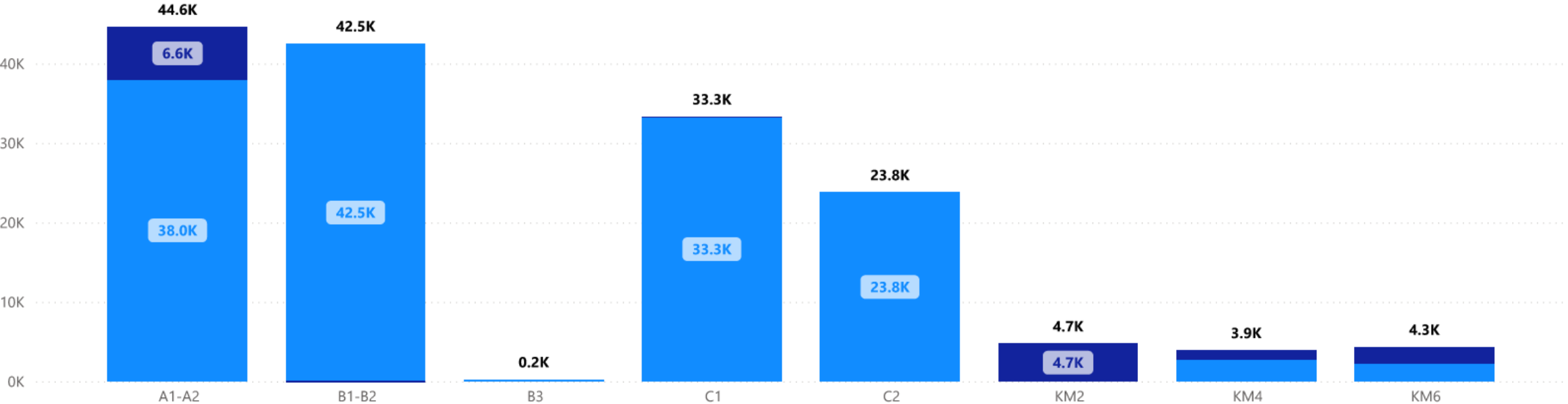
Open Cut (LF) by Project

182K
Installed

15K
Remaining

ProjectID	Bid Quantity (LF)
A1-A2	44,582
B1-B2	42,456
B3	210
C1	33,292
C2	23,760
KM2	4,720
KM4	3,880
KM6	4,301
S3-A1	12,750
S3-A2	11,402
S3-A3	5,670
S3-A4	9,882
Total	196,905

● Installed (LF) ● Remaining (LF)





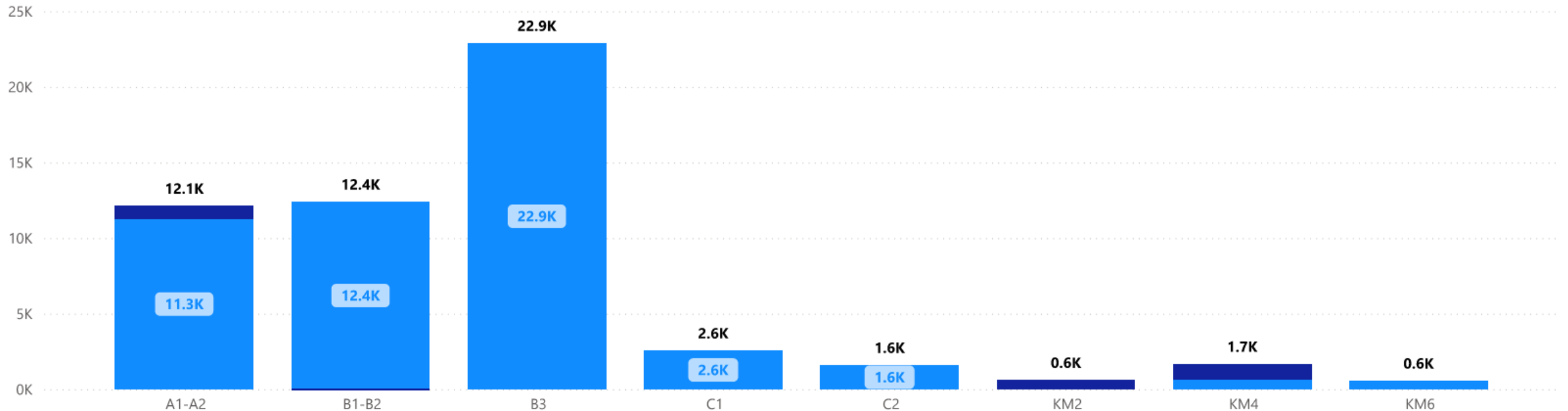
Tunneling (LF) by Project

60K
Installed

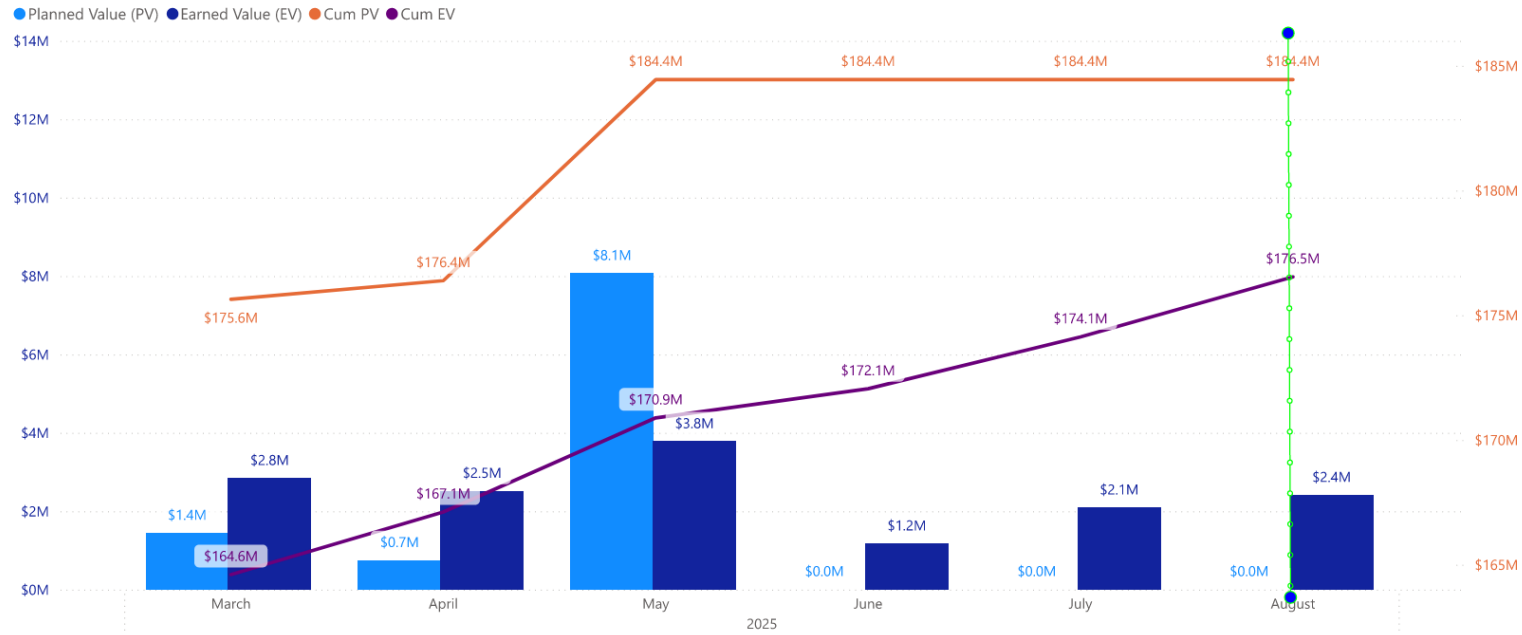
2K
Remaining

ProjectID	Bid Quantity (LF)
A1-A2	12,127
B1-B2	12,384
B3	22,885
C1	2,554
C2	1,599
KM2	611
KM4	1,665
KM6	563
S3-A1	1,270
S3-A2	2,626
S3-A3	3,076
S3-A4	1,198
Total	62,558

● Installed (LF) ● Remaining (LF)



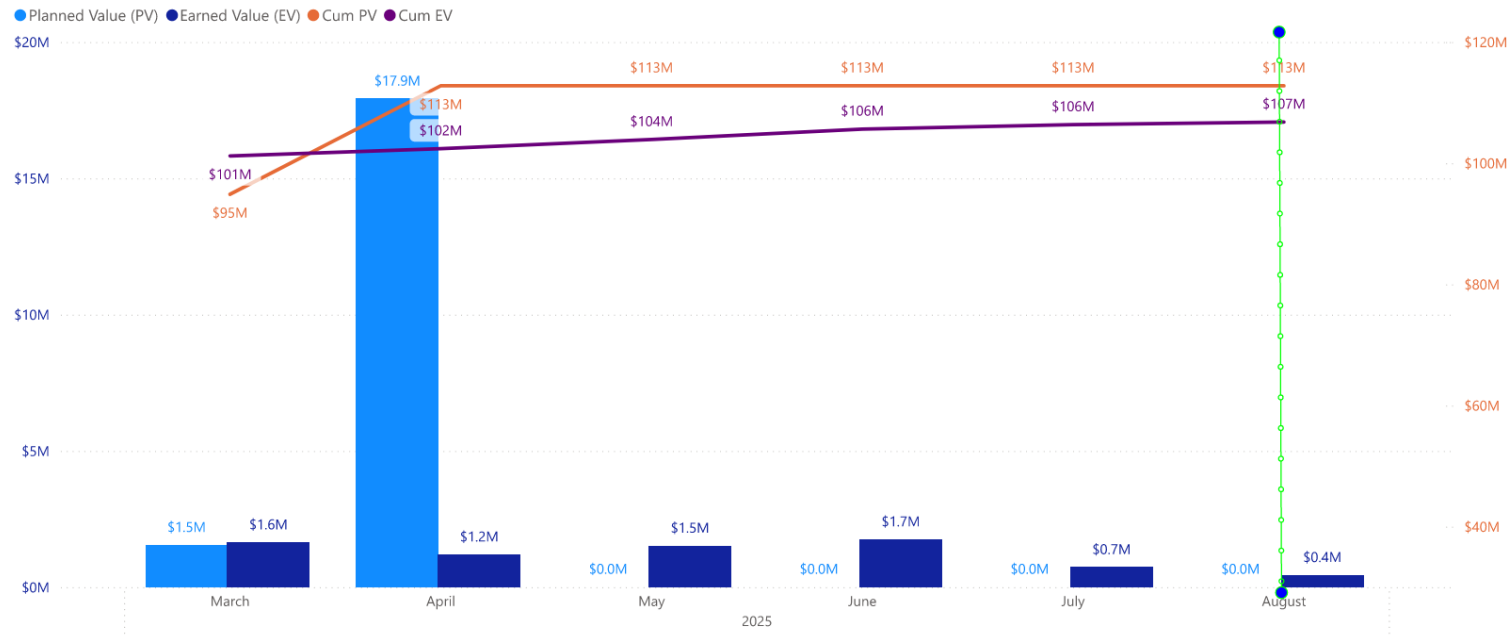
Segment B1|B2



SWSP Segment B1-B2



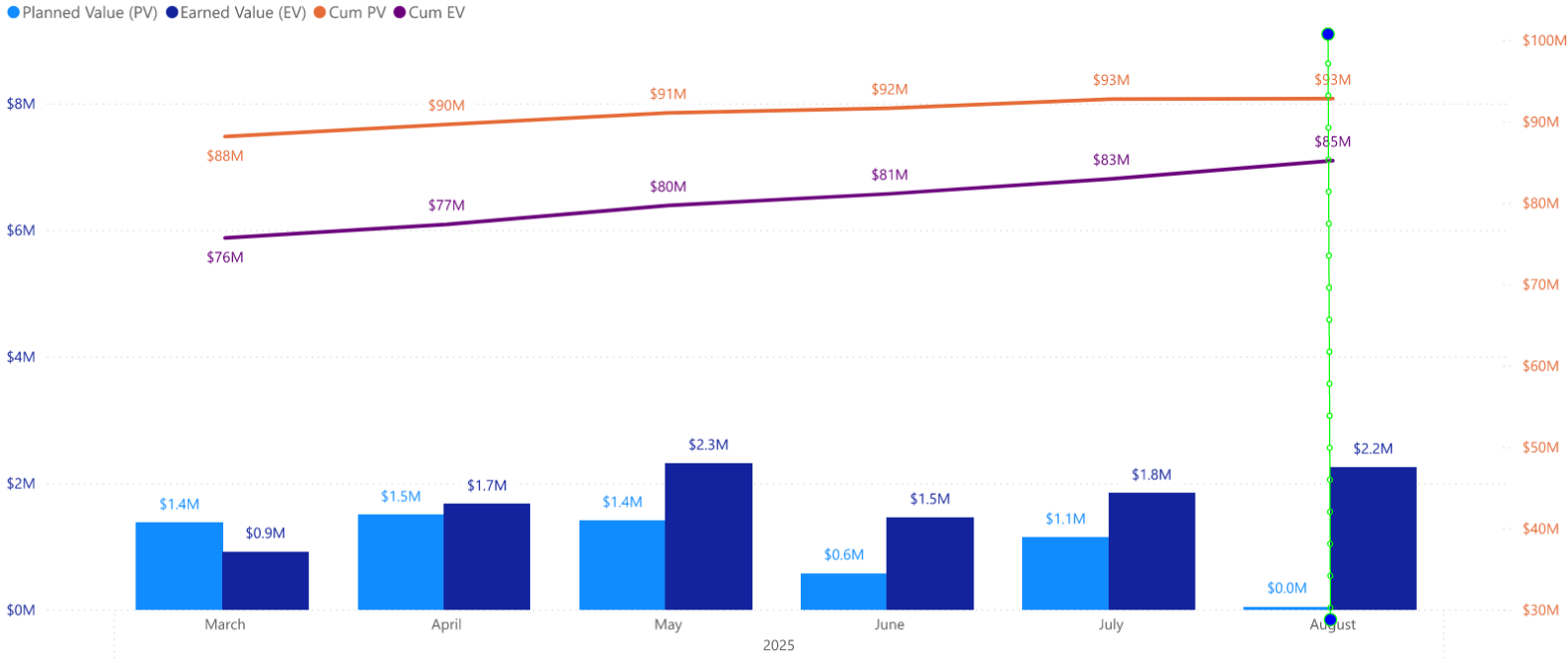
Segment B3



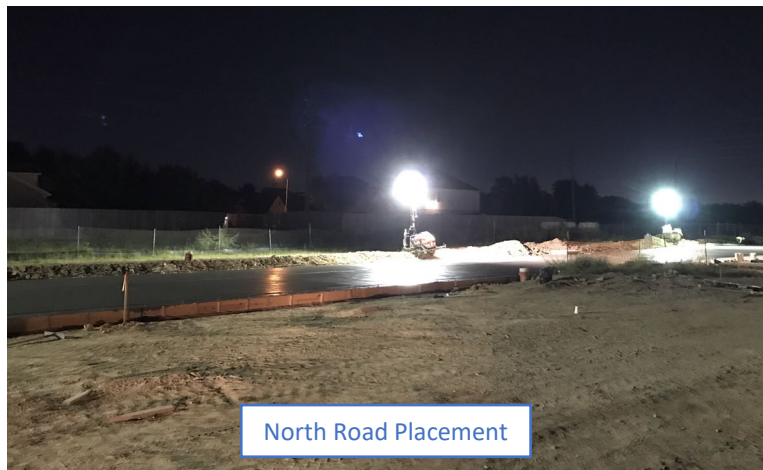
SWSP Segment B3



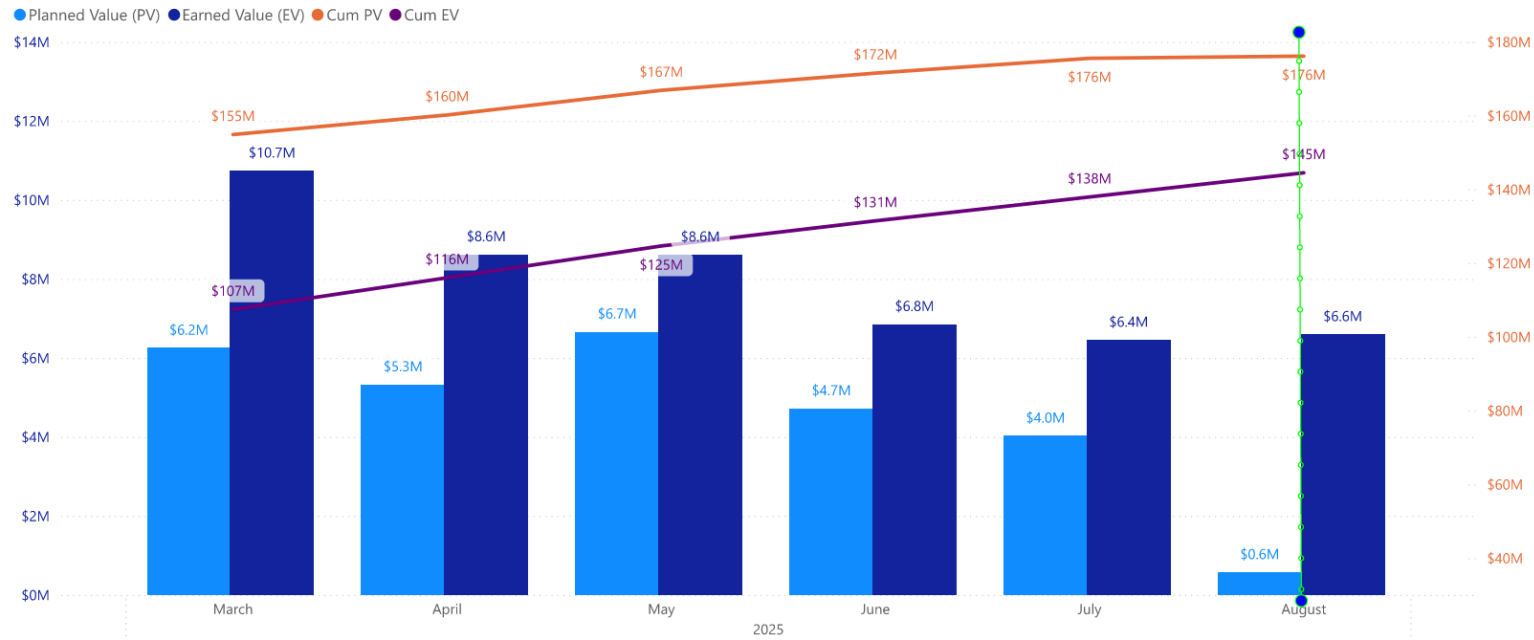
Central Pump Station



SWSP Central Pump Station



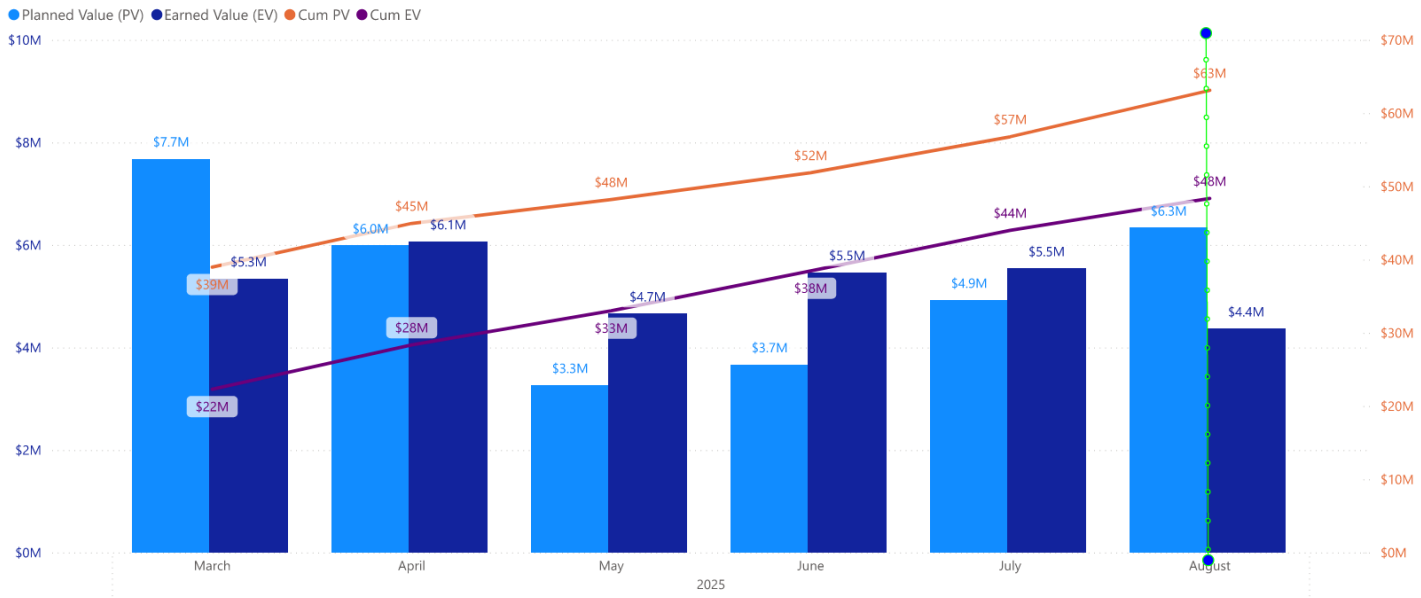
Segment A1|A2



SWSP Segment A1-A2



Re-Pump Station



SWSP Repump Station



GST 2 – Wire Wrapping

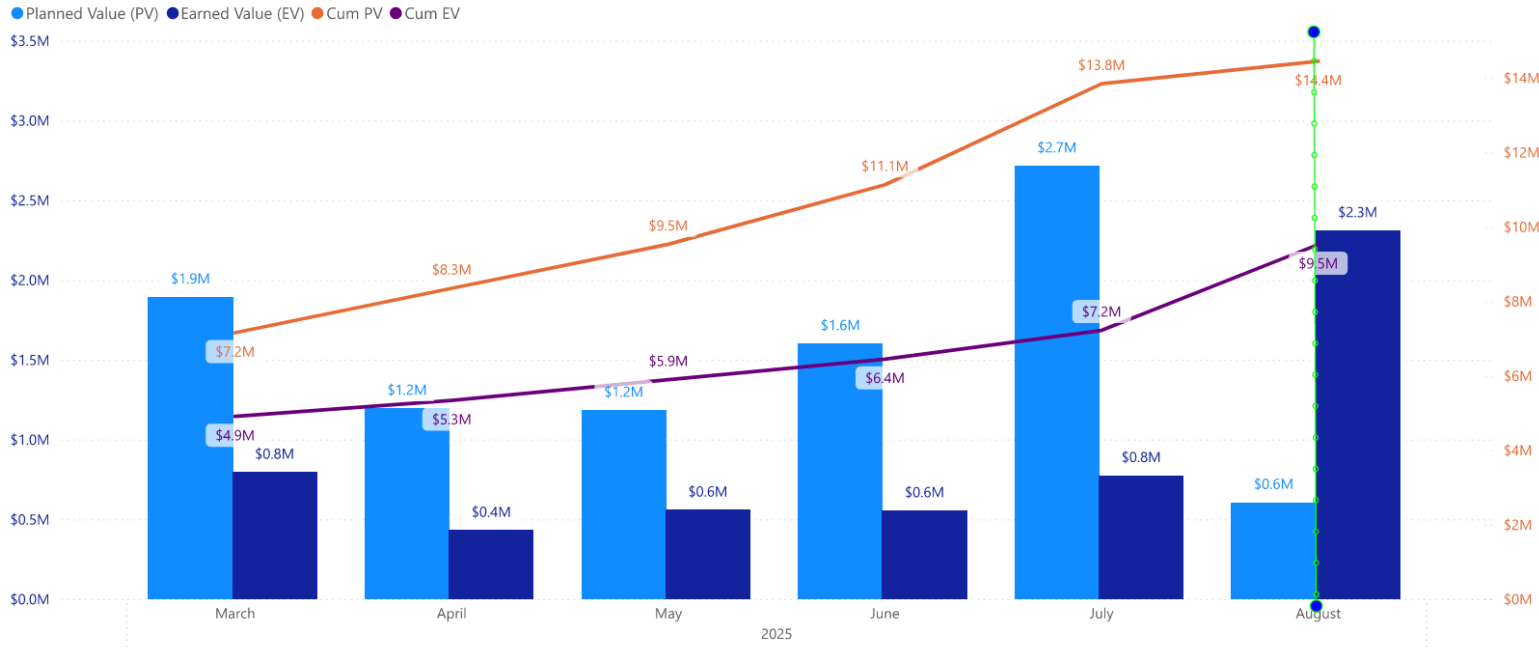


RPS Site - Overall



Operations Center Steel

NE Meter Station



SWSP Northeast Meter Station



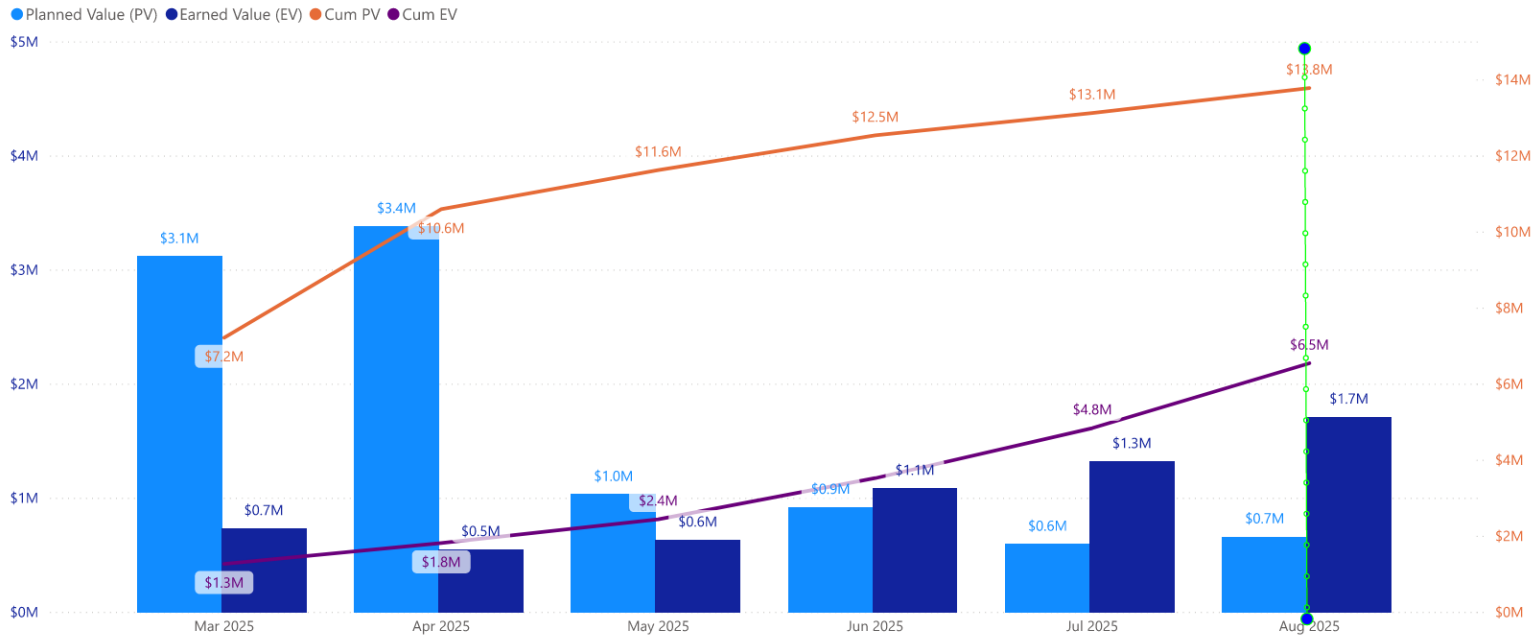
Project Name

KM4

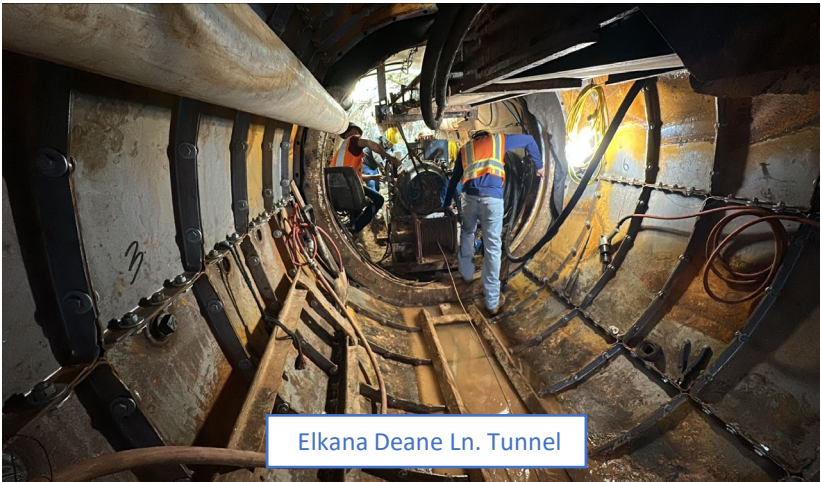
3/25/2025

8/25/2025

Segment KM-4



SWSP KM-4



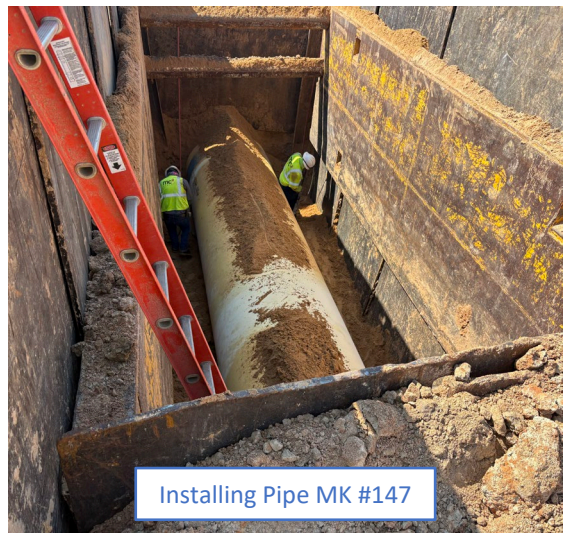
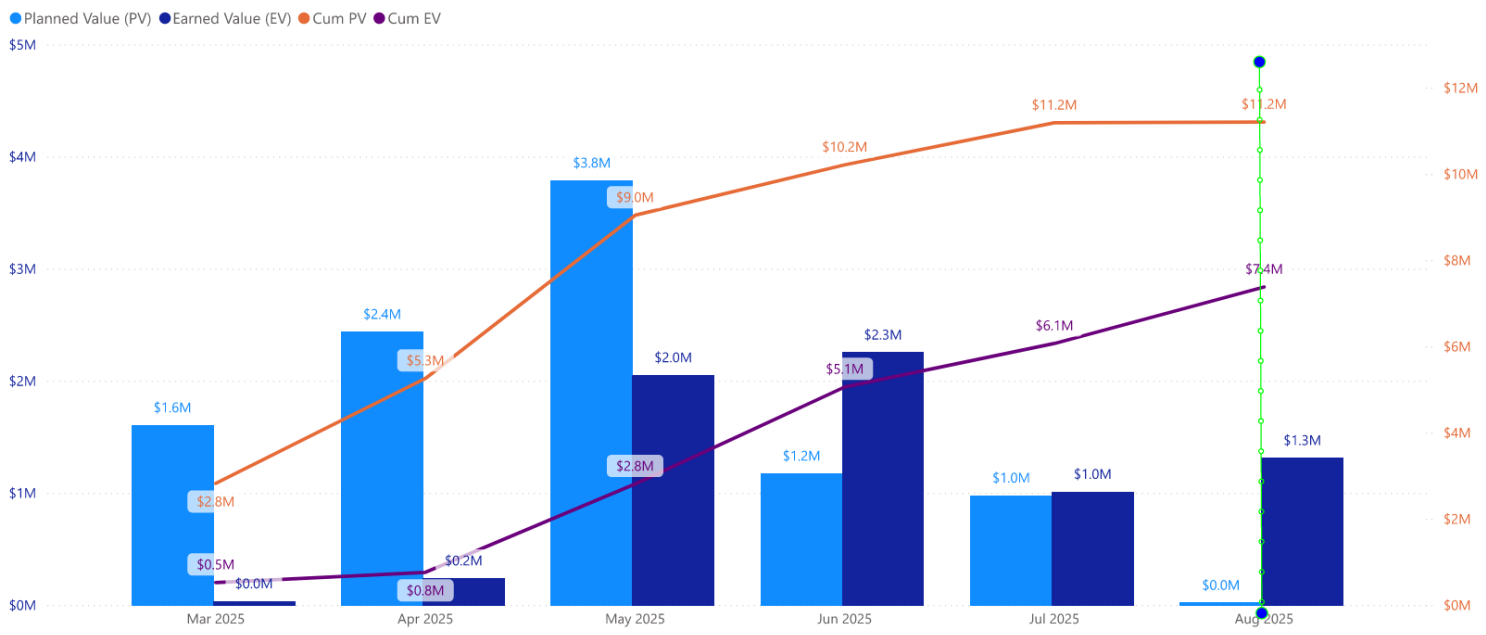
Project Name

KM6

3/25/2025

8/25/2025

Segment KM-6



CIP CONTRACTS

