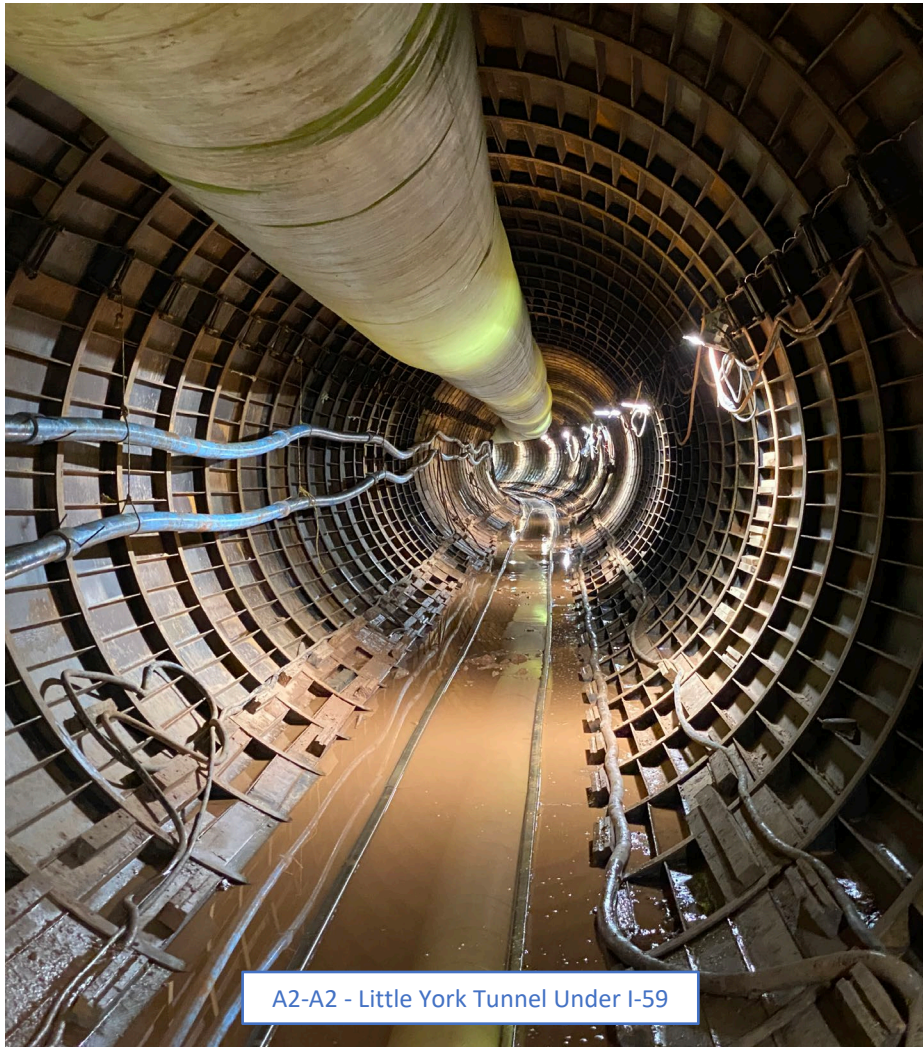


February 2025 Monthly Construction Status Report

Updated: 03.07.2025



A2-A2 - Little York Tunnel Under I-59

WHCRWA Ongoing Surface Water Supply Projects

Segment B1-B2

3 MILES OF 84-INCH DIAMETER AND 8 MILES OF 96-INCH WATERLINES FROM WEST OF BRITTMOORE ROAD TO WEST OF I-45

Segment B3

4.4 MILES OF 96-INCH DIAMETER WATER LINES FROM WEST OF I-45 TO THE SOUTH SIDE OF HOPPER RD. VIA TUNNEL

Segment 3 - A1 to Segment 3 – A3 (3 Projects)

7 MILES OF 42-INCH WATER LINE ALONG CENTERPOINT ENERGY CORRIDOR FROM NORTH OF LAKESIDE FOREST LN TO SEGMENT C2

Segment C1

5 MILES OF 84-INCH, 66-INCH, AND 36-INCH WATER LINE FROM WESTFIELD VILLAGE DRIVE TO HIGHWAY 6

Central Pump Station

CONSTRUCTION OF A CENTRAL PUMP STATION THAT WILL RECEIVE WATER FROM THE RE-PUMP STATION AND THEN TRANSFER WATER TO MUDS

Segment A1-A2

11 MILES OF 96-INCH WATER LINE FROM HOPPER RD. TO THE WHCRWA METER STATION NEAR THE NEWPP

Repump Station

CONSTRUCTION OF A 160 MGD REPUMP STATION FACILITY INCLUDING TWO 10 MILLION GALLON TANKS

Kinder Morgan Segment 6

4,933 LINEAR FEET OF 66-INCH DIAMETER WATER LINES FROM IH-10 METER STATION TO KM-5

NorthEast Meter Station

CONSTRUCTION OF A METER STATION AT COH/WHCRWA INTERFACE

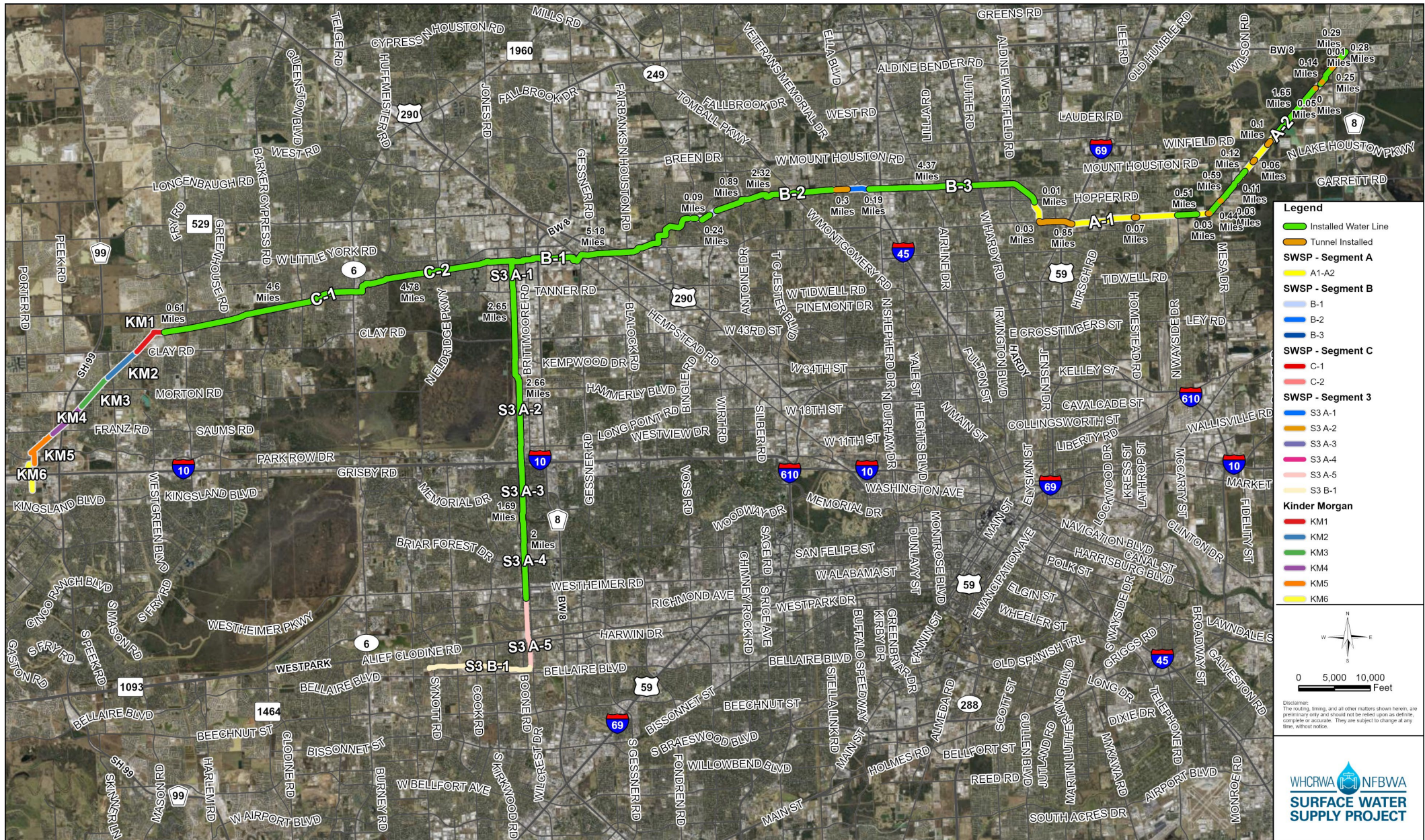
Kinder Morgan Segment 4

5,550 LINEAR FEET OF 66-INCH DIAMETER WATER LINES FROM POWDERHORN LANE TO JOHN CRUMP LANE

Kinder Morgan Segment 2

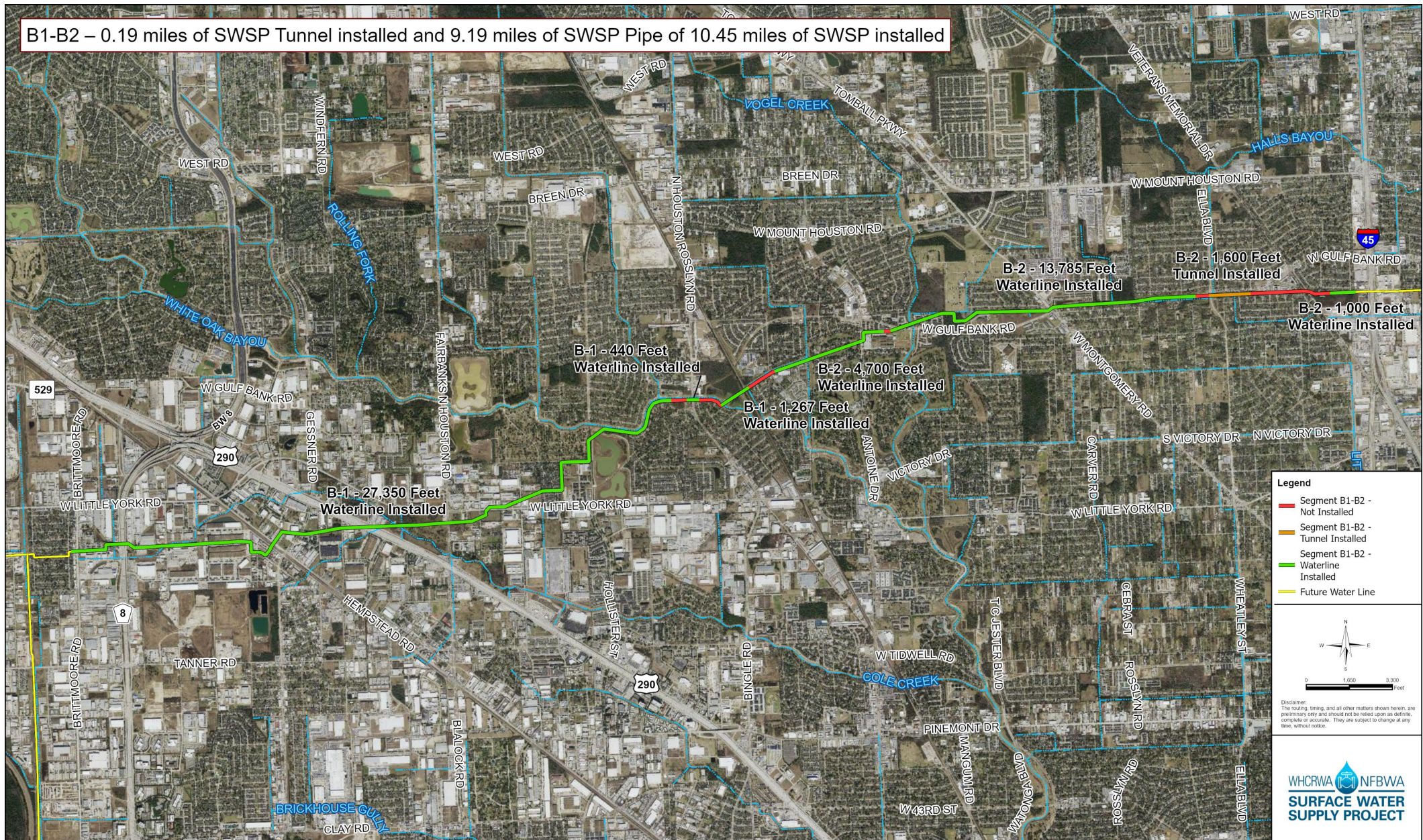
5,350 LINEAR FEET OF 66-INCH AND 60 LINEAR FEET OF 12-IN AND 50 LINEAR FEET OF 48-IN DIAMETER WATER LINES WITHIN THE KINDER MORGAN EASEMENT

Current SWSP Construction Projects Overview



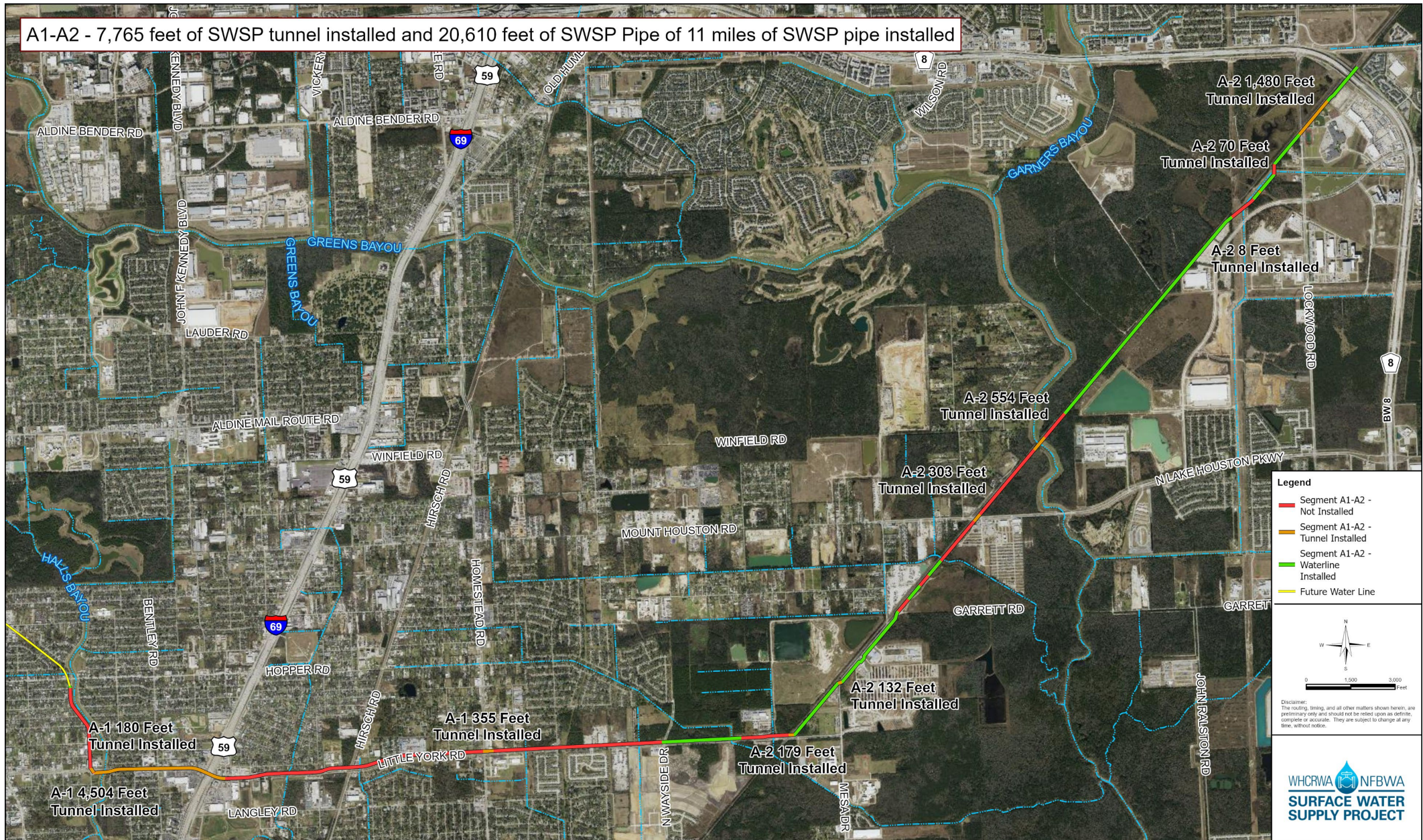
SWSP - Construction Overview

Construction Progress – Segment B1-B2



Construction Progress – Segment A1-A2

A1-A2 - 7,765 feet of SWSP tunnel installed and 20,610 feet of SWSP Pipe of 11 miles of SWSP pipe installed



SWSP Contract Segment A1-A2 - Construction Progress



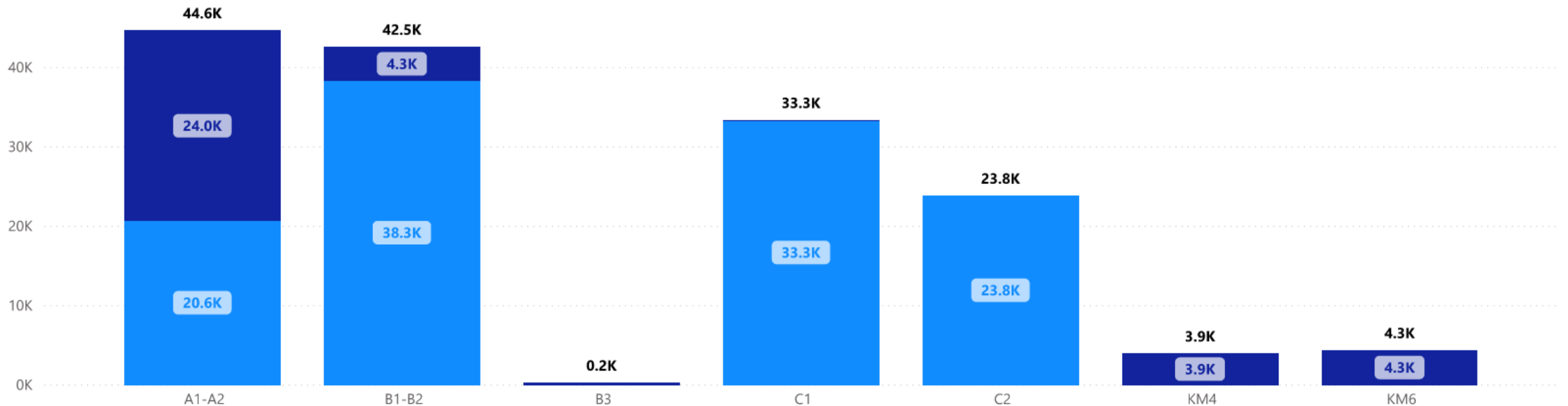
Open Cut (LF) by Project

155K
Installed

37K
Remaining

ProjectID	Bid Quantity (LF)
A1-A2	44,582
B1-B2	42,519
B3	210
C1	33,292
C2	23,760
KM4	3,880
KM6	4,301
S3-A1	12,750
S3-A2	11,402
S3-A3	5,670
S3-A4	9,882
Total	192,248

● Installed (LF) ● Remaining (LF)



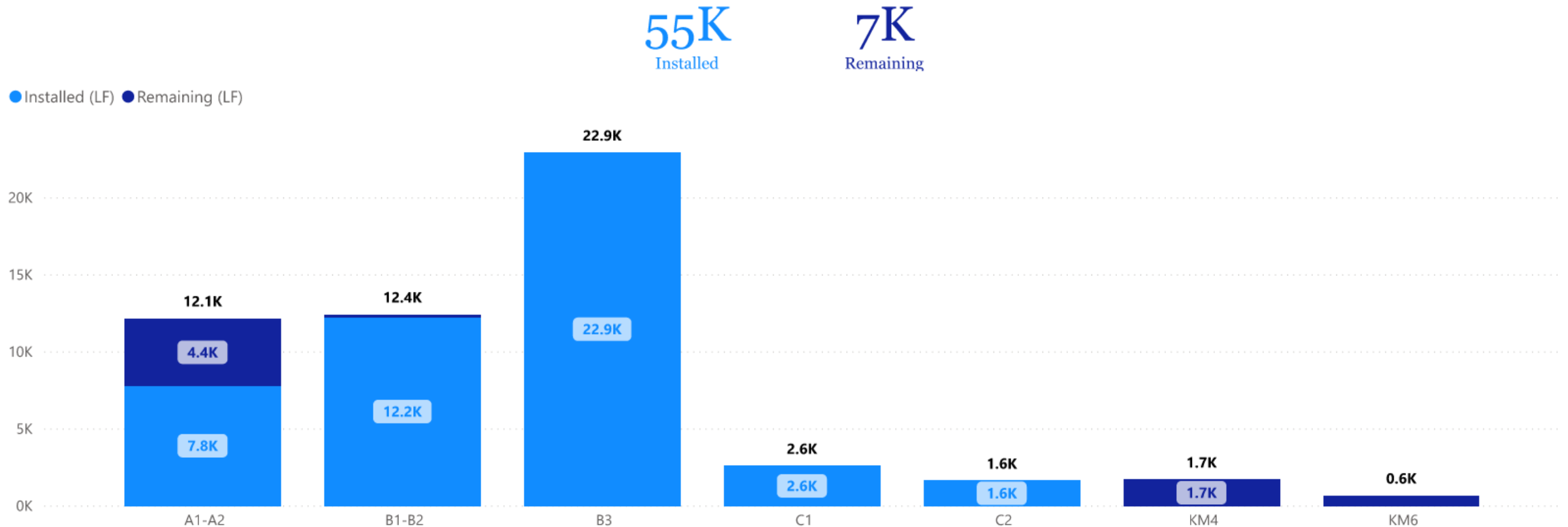


WHCRWA NFBWA

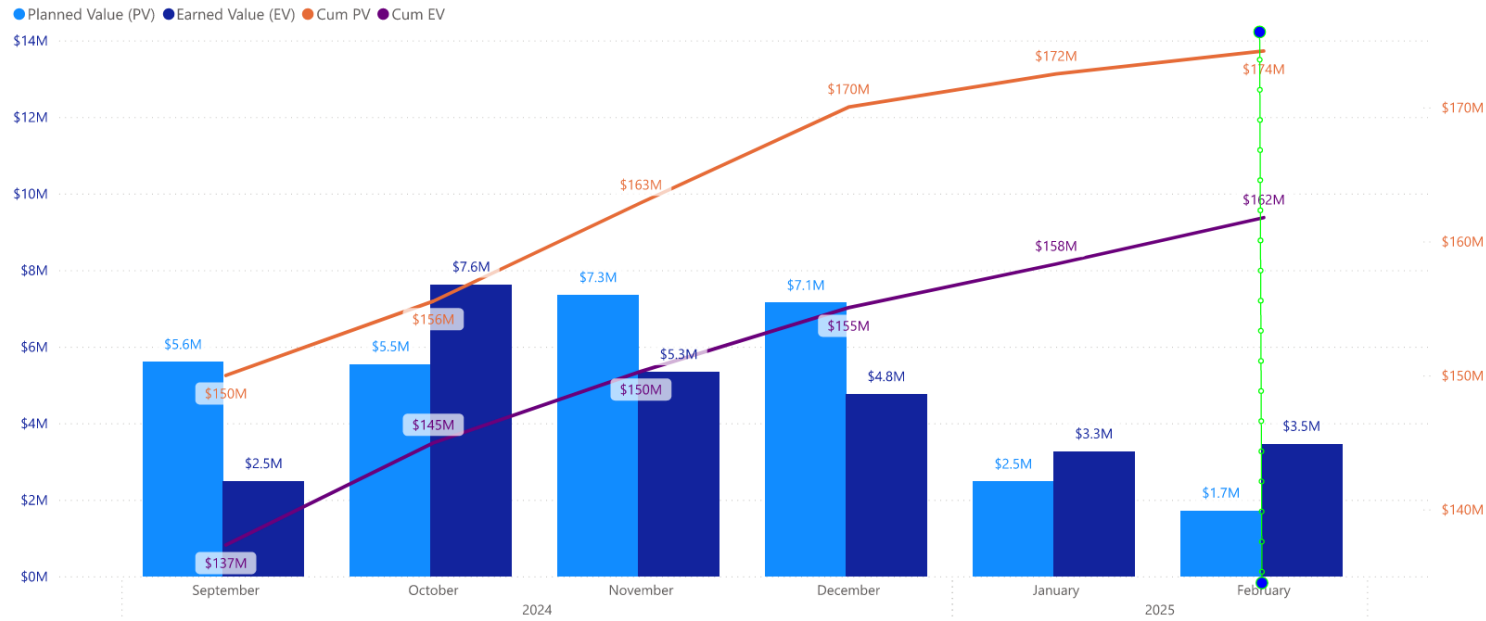
SURFACE WATER SUPPLY PROJECT

Tunneling (LF) by Project

ProjectID	Bid Quantity (LF)
A1-A2	12,127
B1-B2	12,384
B3	22,885
C1	2,554
C2	1,599
KM4	1,665
KM6	633
S3-A1	1,270
S3-A2	2,626
S3-A3	3,076
S3-A4	1,198
Total	62,017



Segment B1|B2



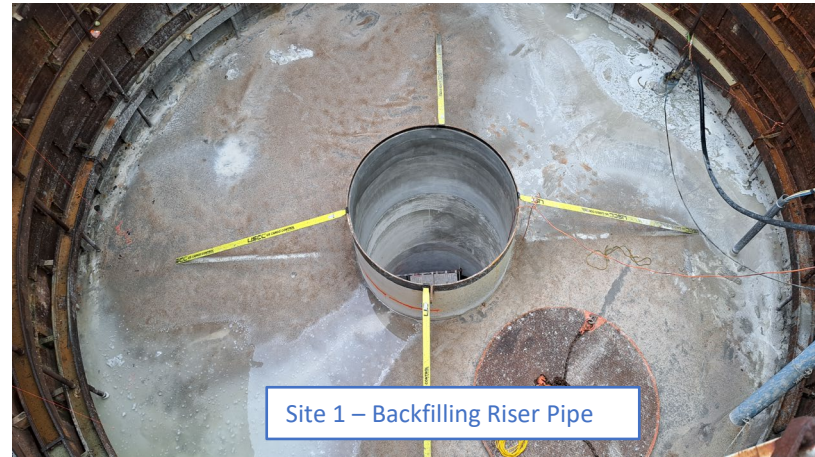
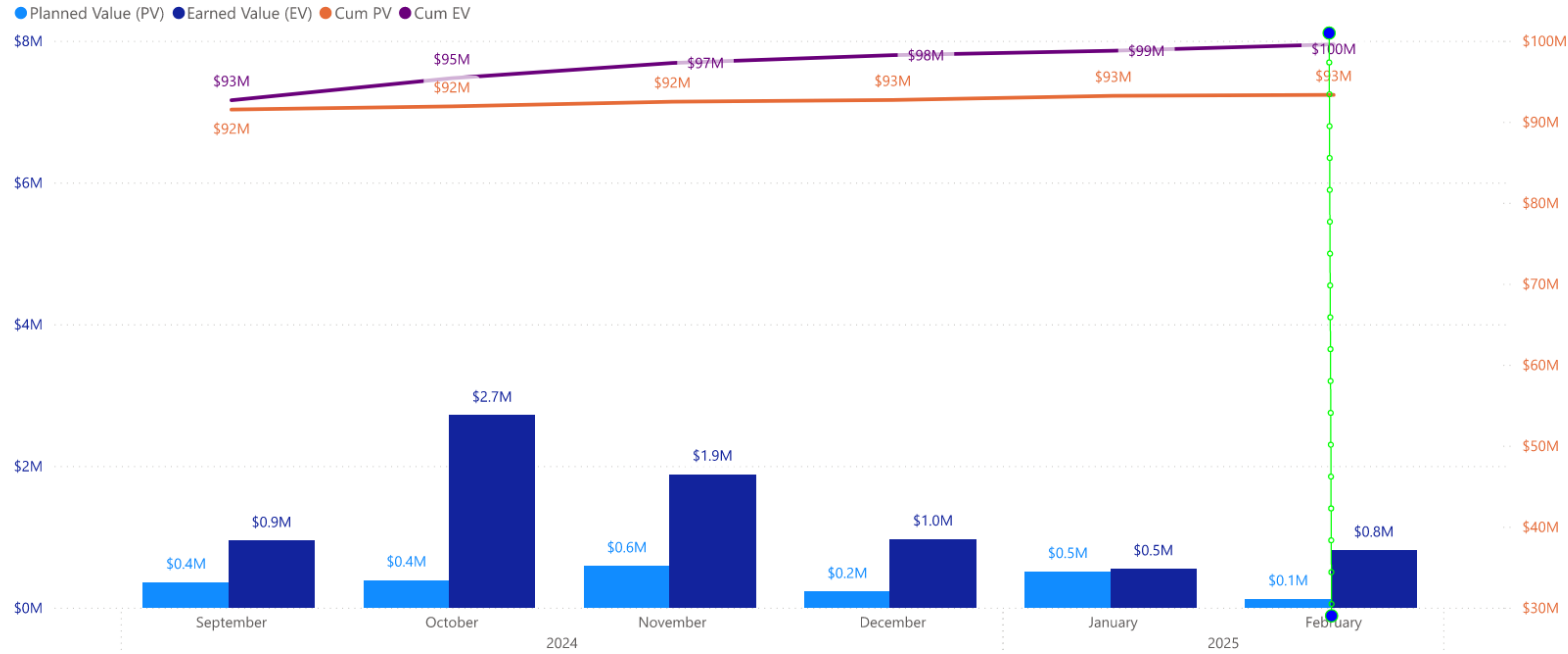
SWSP Segment B1-B2



Project Name
B3

9/25/2024 2/25/2025

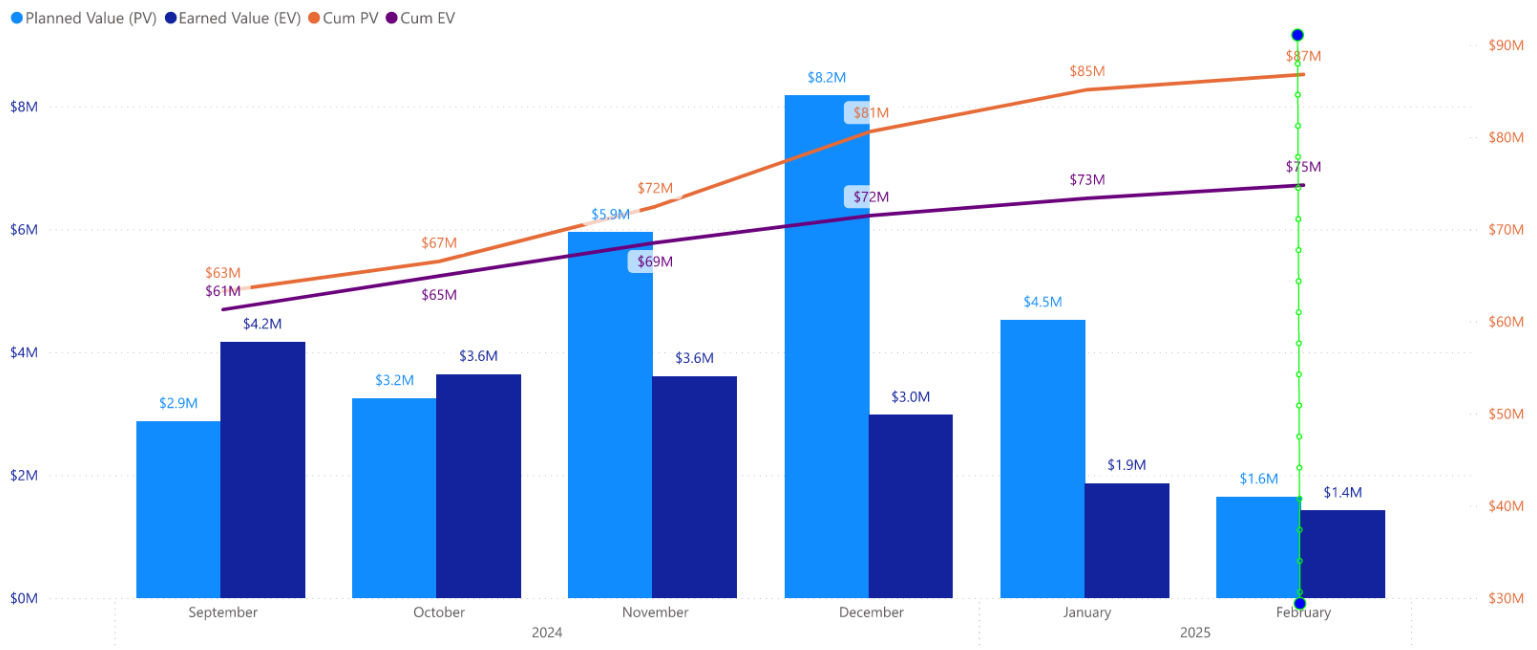
Segment B3



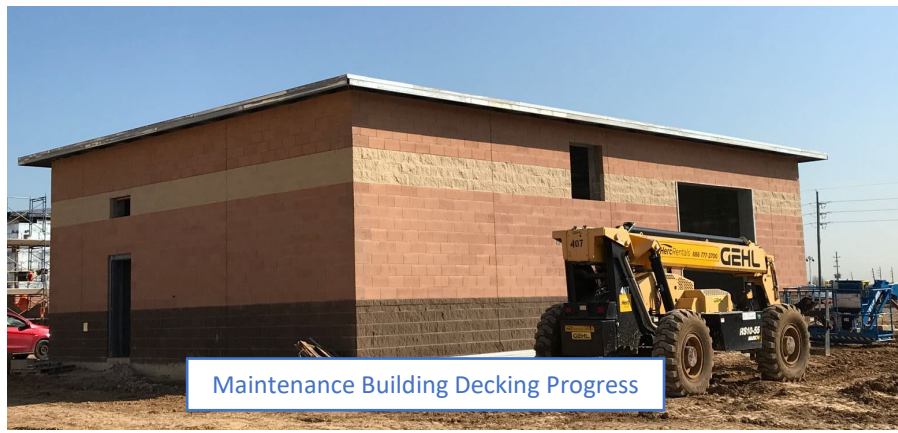
SWSP Segment B3



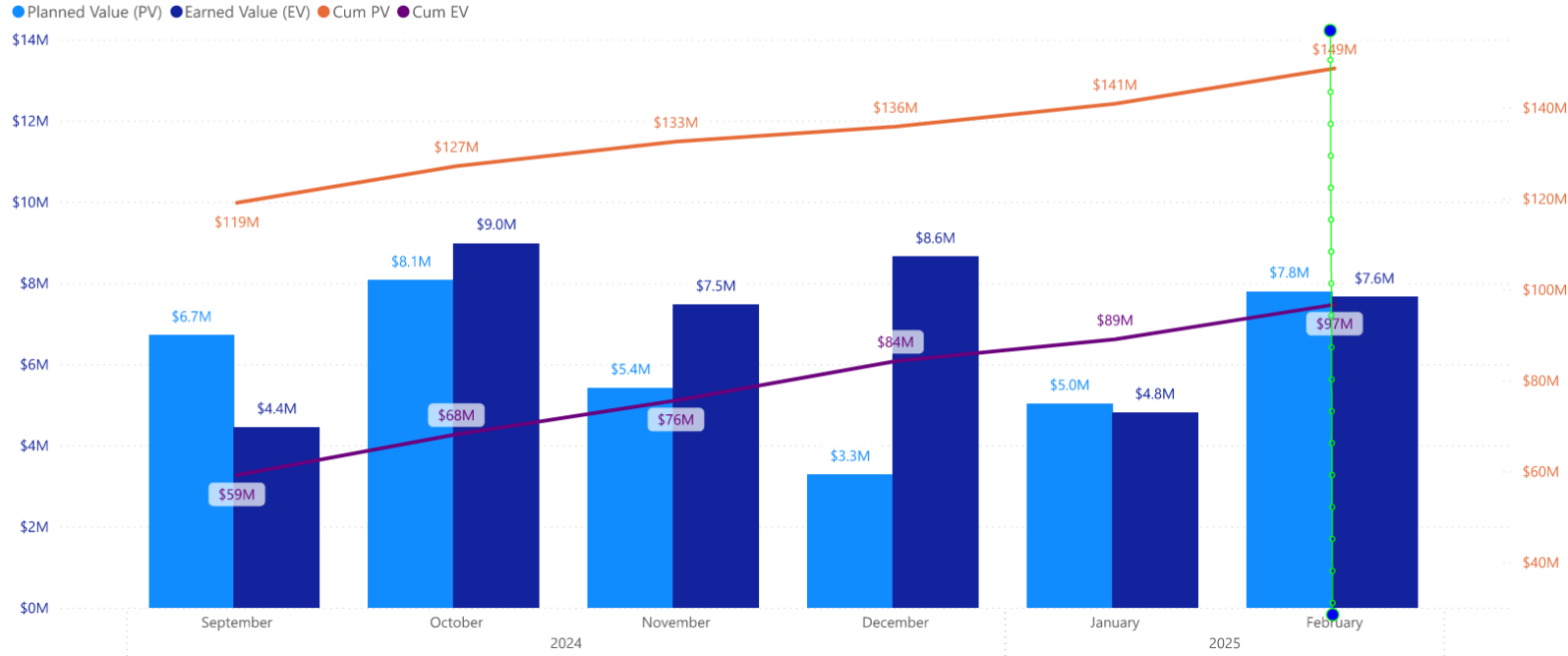
Central Pump Station



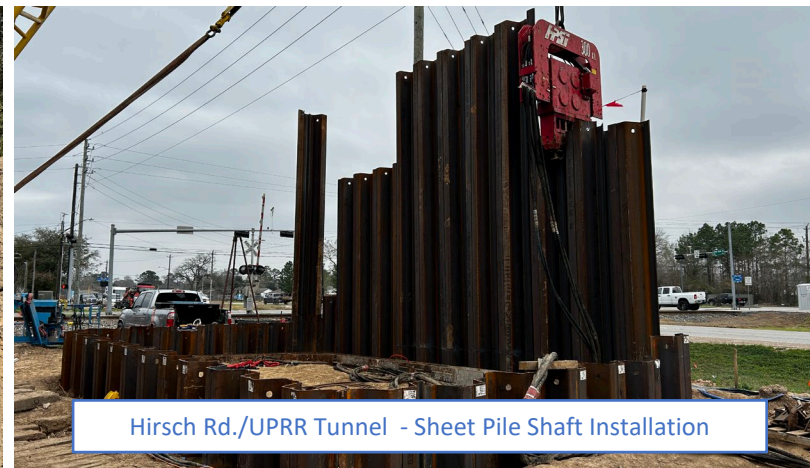
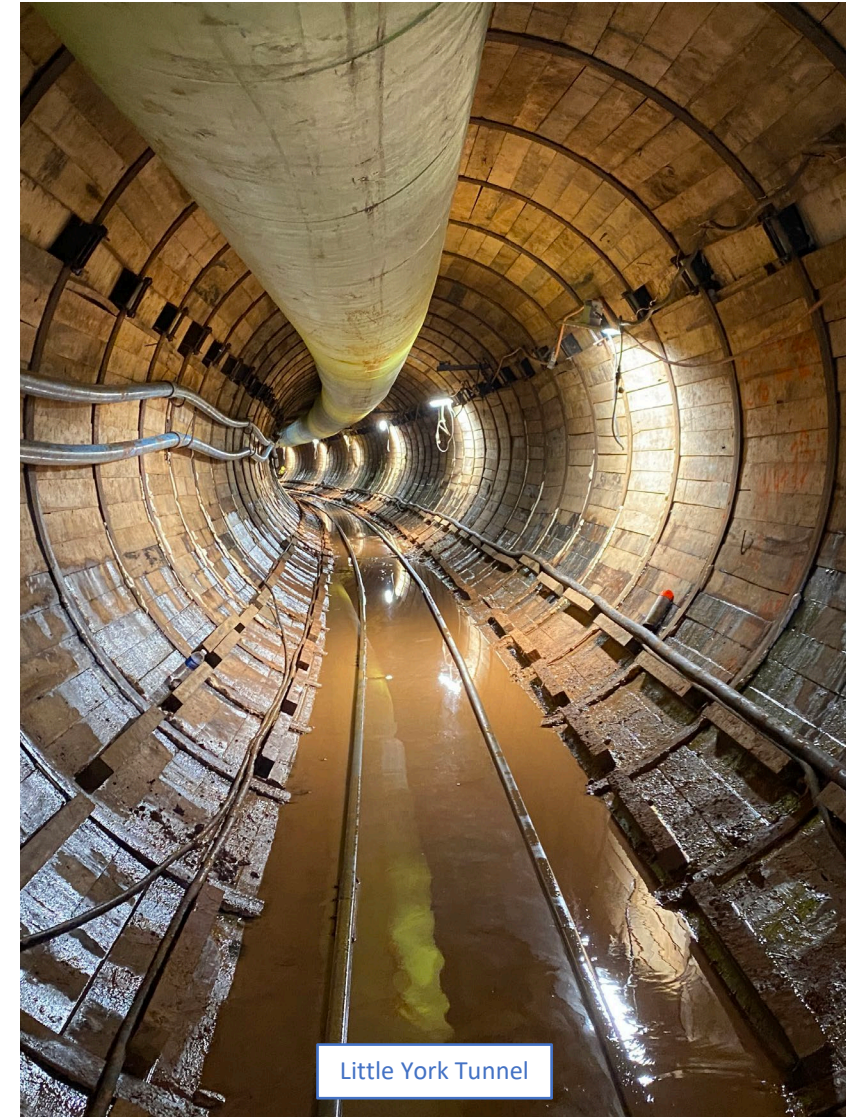
SWSP Central Pump Station



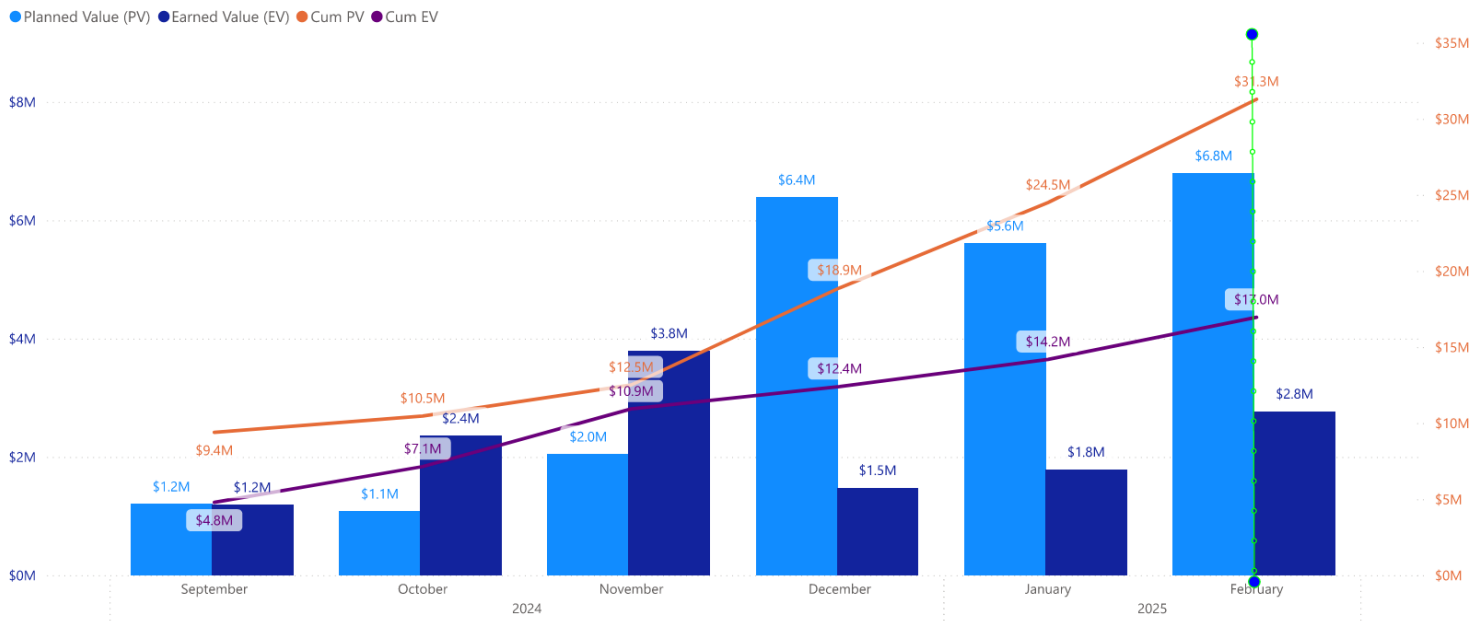
Segment A1|A2



SWSP Segment A1-A2



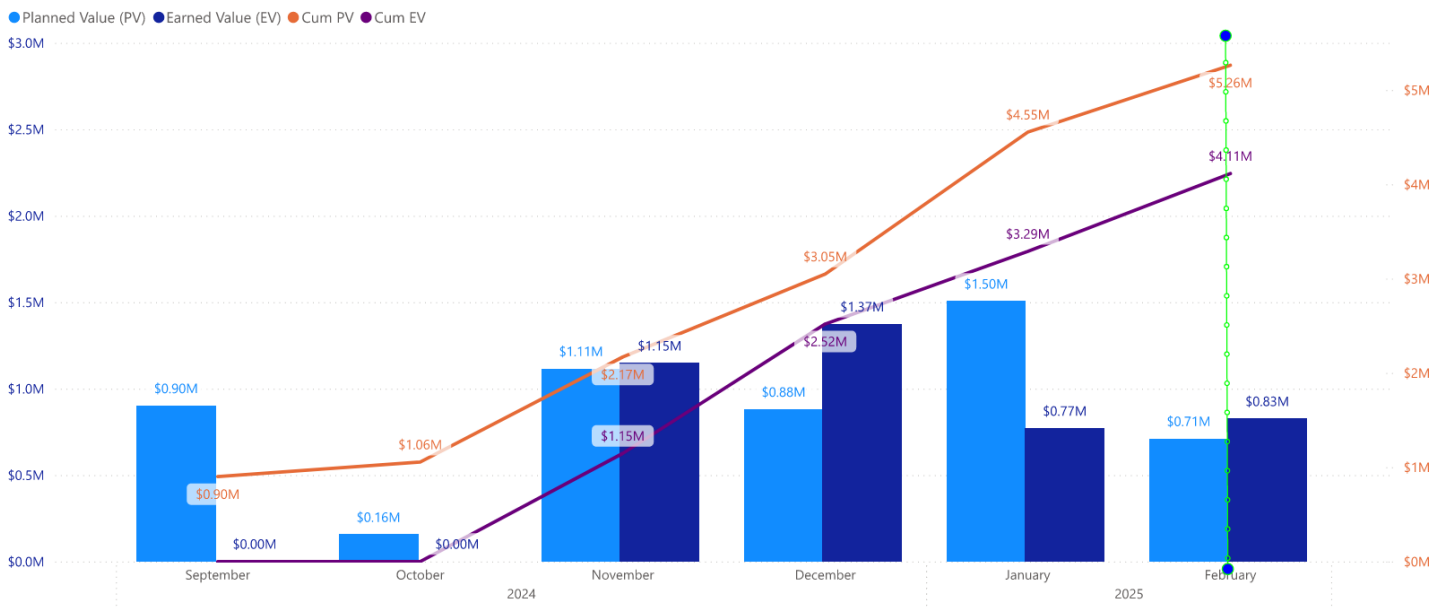
Re-Pump Station



SWSP Repump Station



NE Meter Station



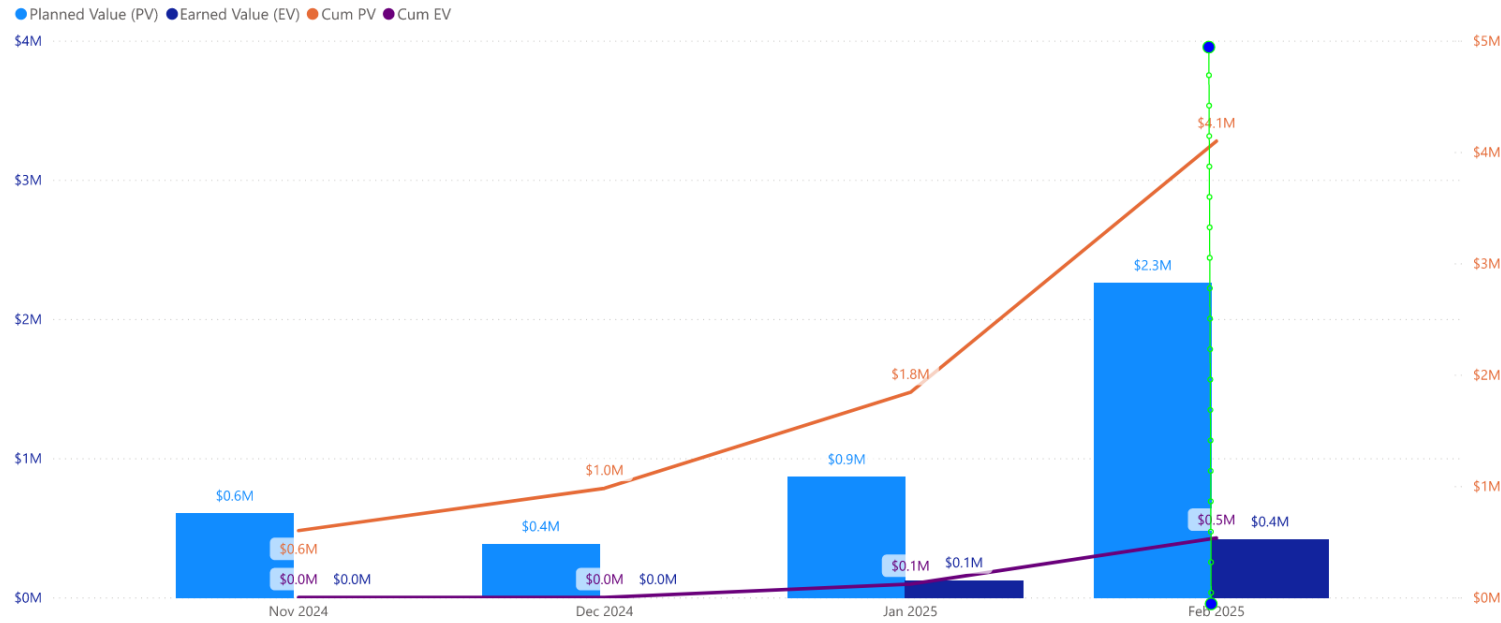
SWSP Northeast Meter Station



Project Name
KM4

9/25/2024 2/25/2025

Segment KM-4



Excavating Franz Rd. Launch Shaft



Drilling Holes for Beams at HCFCF Shaft



Installing Beams at Grandway Dr. Shaft