

December 2024 Monthly Construction Status Report

Updated: 1.6.2025



A1-A2 - Lockwood Tunnel

WHCRWA Ongoing Surface Water Supply Projects

Segment B1-B2

3 MILES OF 84-INCH DIAMETER AND 8 MILES OF 96-INCH WATERLINES FROM WEST OF BRITTMOORE ROAD TO WEST OF I-45

Segment B3

4.4 MILES OF 96-INCH DIAMETER WATER LINES FROM WEST OF I-45 TO THE SOUTH SIDE OF HOPPER RD. VIA TUNNEL

Segment 3 - A1 to Segment 3 - A3 (3 Projects)

7 MILES OF 42-INCH WATER LINE ALONG CENTERPOINT ENERGY CORRIDOR FROM NORTH OF LAKESIDE FOREST LN TO SEGMENT C2

Segment C1

5 MILES OF 84-INCH, 66-INCH, AND 36-INCH WATER LINE FROM WESTFIELD VILLAGE DRIVE TO HIGHWAY 6

Central Pump Station

CONSTRUCTION OF A CENTRAL PUMP STATION THAT WILL RECEIVE WATER FROM THE RE-PUMP STATION AND THEN TRANSFER WATER TO MUDS

Segment A1-A2

11 MILES OF 96-INCH WATER LINE FROM HOPPER RD. TO THE WHCRWA METER STATION NEAR THE NEWPP

Repump Station

CONSTRUCTION OF A 160 MGD REPUMP STATION FACILITY INCLUDING TWO 10 MILLION GALLON TANKS

Kinder Morgan Segment 6

4,933 LINEAR FEET OF 66-INCH DIAMETER WATER LINES FROM IH-10 METER STATION TO KM-5

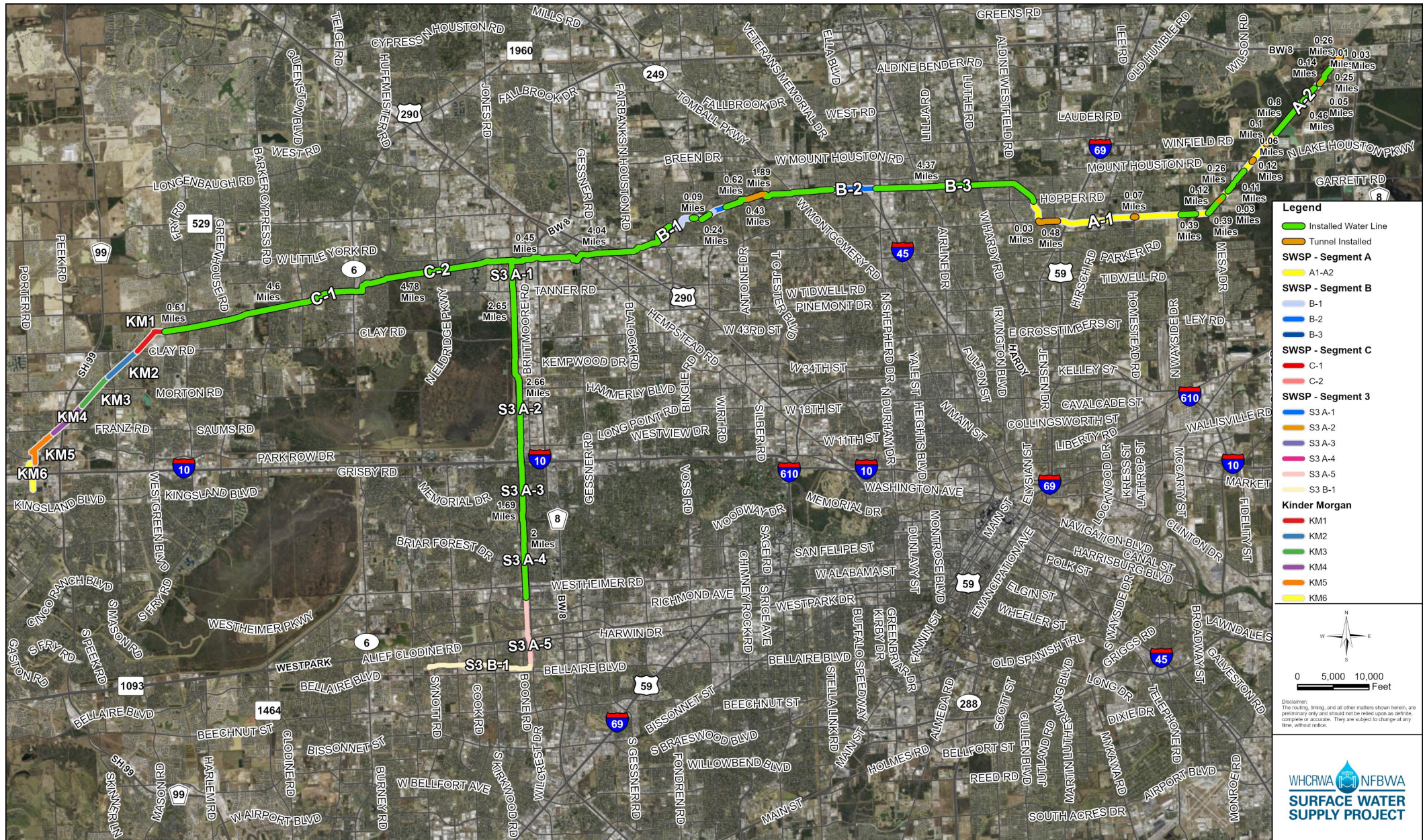
NorthEast Meter Station

CONSTRUCTION OF A METER STATION AT COH/WHCRWA INTERFACE

Kinder Morgan Segment 4

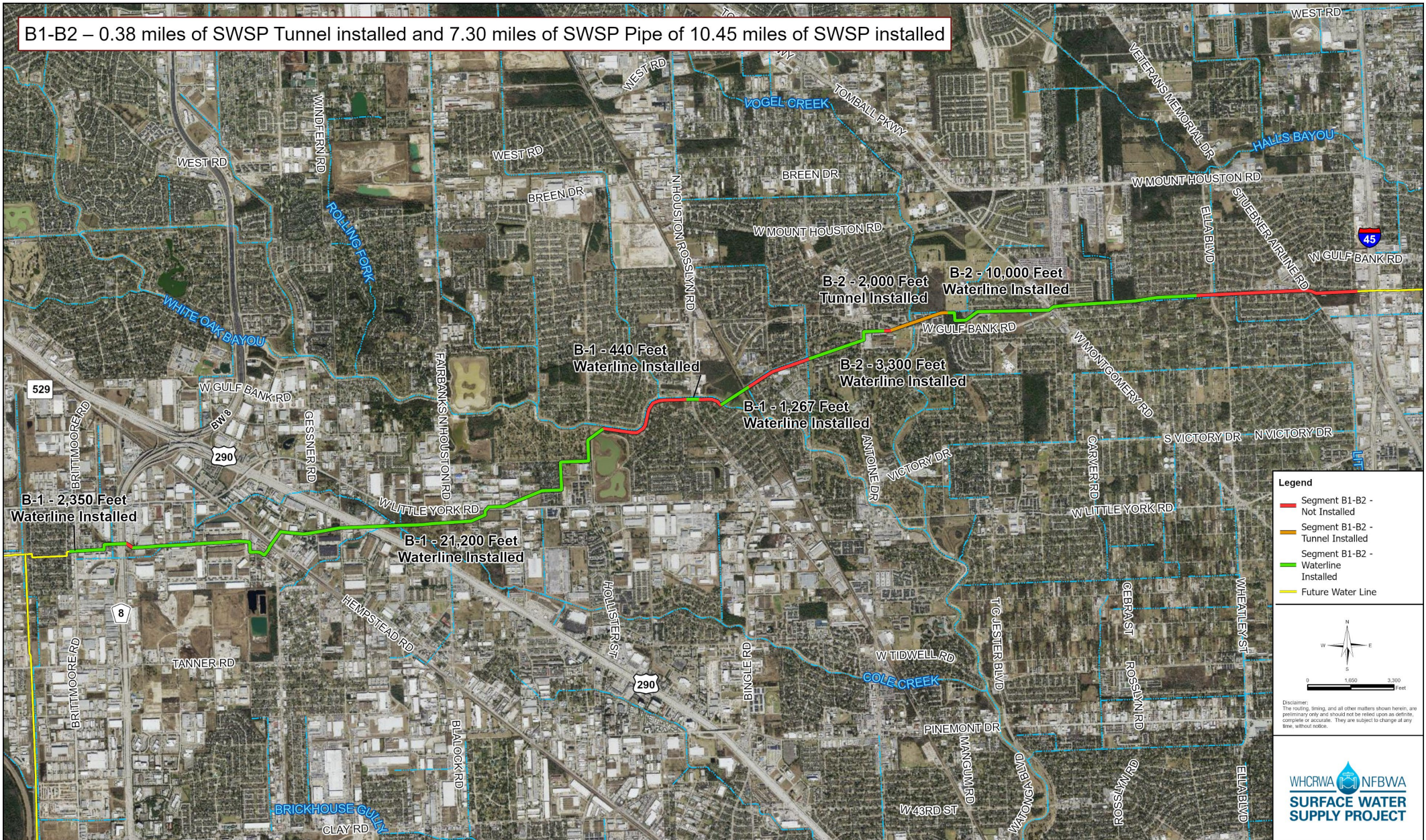
5,550 LINEAR FEET OF 66-INCH DIAMETER WATER LINES FROM POWDERHORN LANE TO JOHN CRUMP LANE

Current SWSP Construction Projects Overview



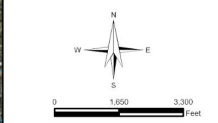
Construction Progress – Segment B1-B2

B1-B2 – 0.38 miles of SWSP Tunnel installed and 7.30 miles of SWSP Pipe of 10.45 miles of SWSP installed



Legend

- Segment B1-B2 - Not Installed
- Segment B1-B2 - Tunnel Installed
- Segment B1-B2 - Waterline Installed
- Future Water Line

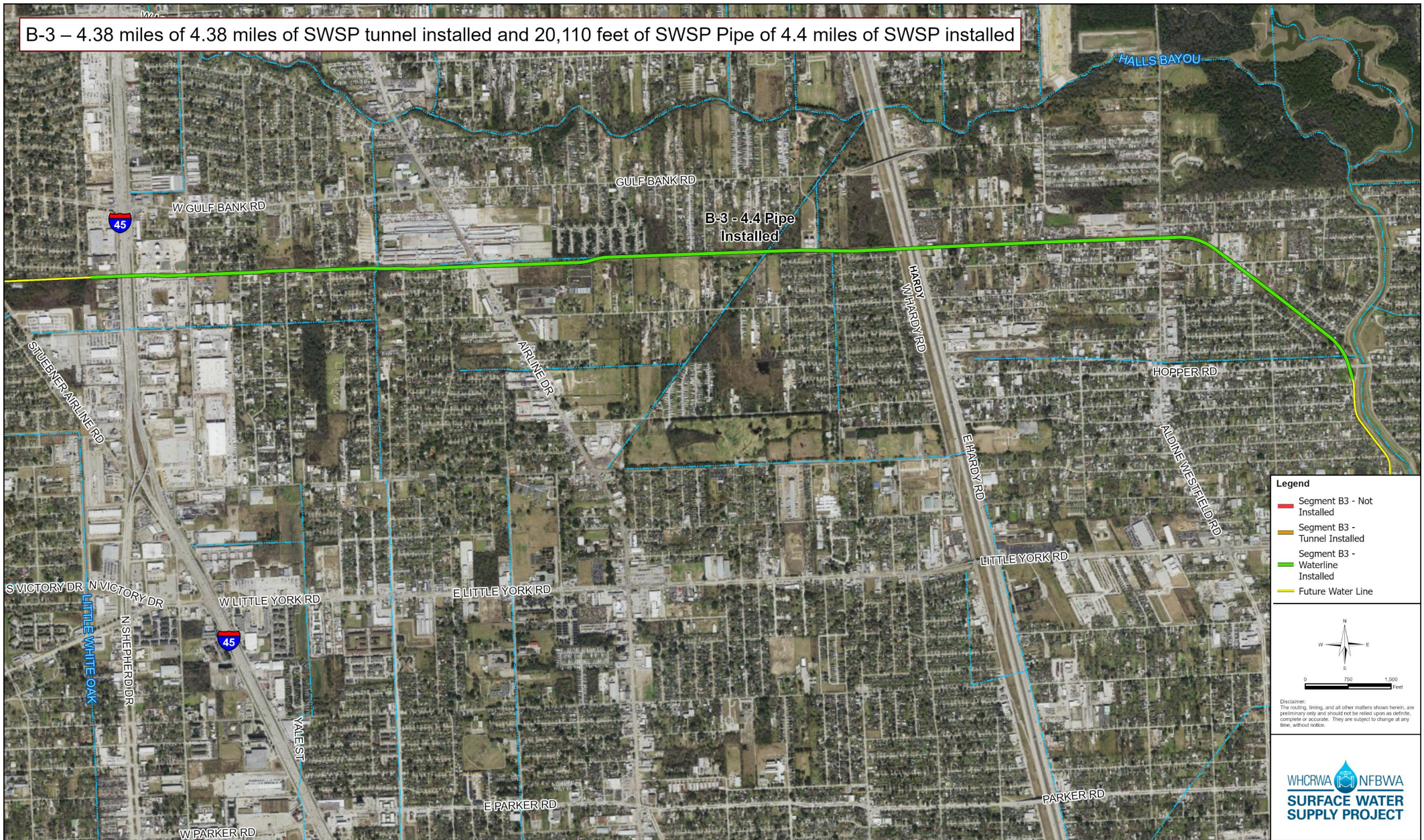


Disclaimer:
The routing, timing, and all other matters shown herein, are preliminary only and should not be relied upon as definite, complete or accurate. They are subject to change at any time, without notice.



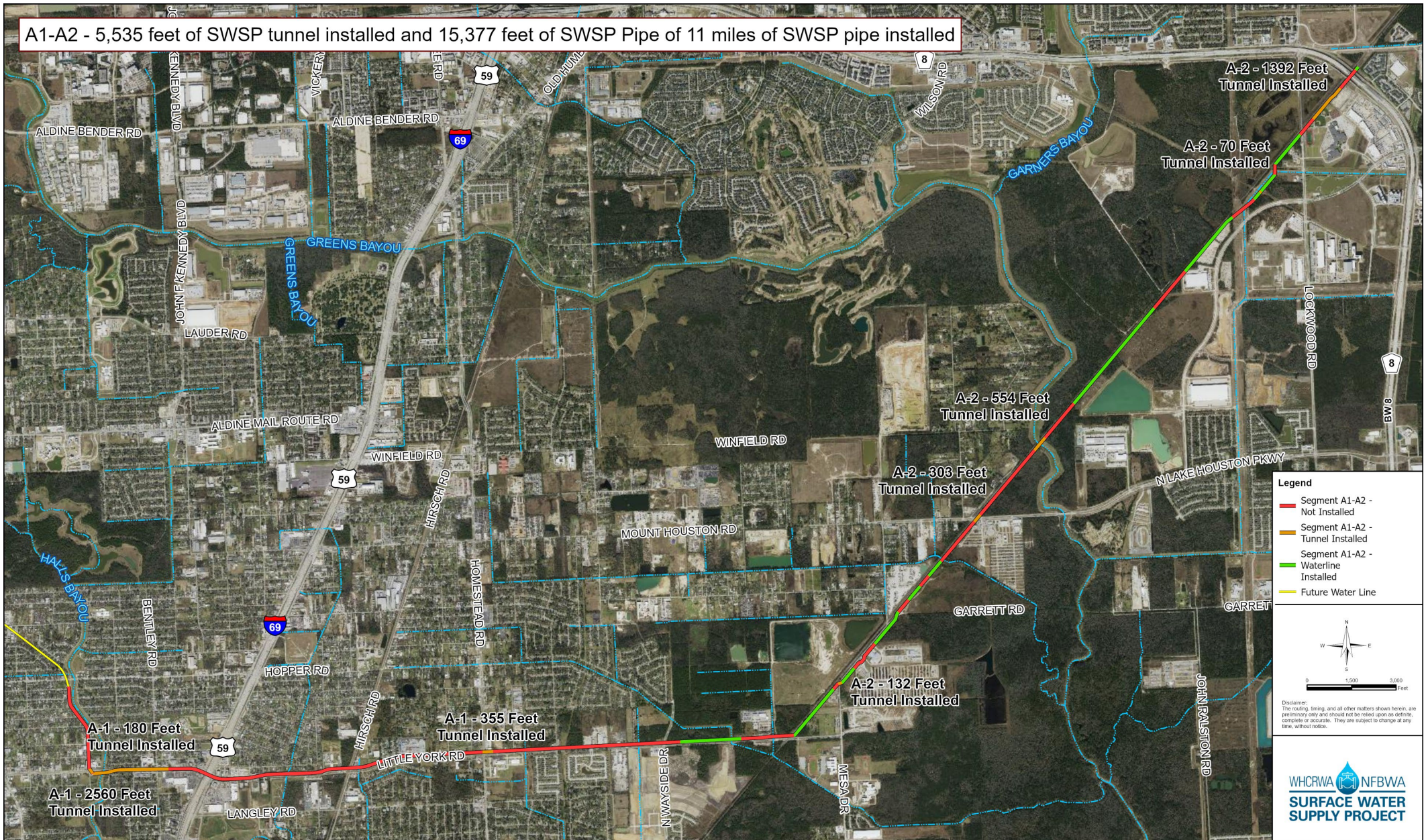
Construction Progress – Segment B3

B-3 – 4.38 miles of 4.38 miles of SWSP tunnel installed and 20,110 feet of SWSP Pipe of 4.4 miles of SWSP installed



Construction Progress – Segment A1-A2

A1-A2 - 5,535 feet of SWSP tunnel installed and 15,377 feet of SWSP Pipe of 11 miles of SWSP pipe installed



SWSP Contract Segment A1-A2 - Construction Progress

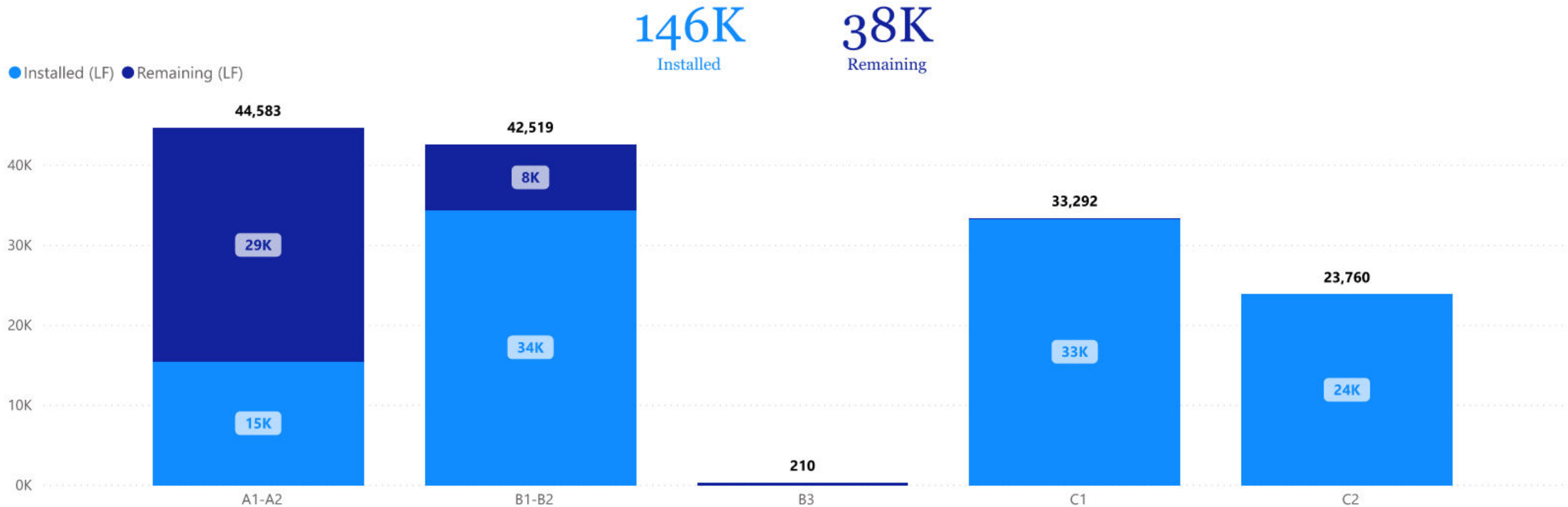




WHCRWA NFBWA
**SURFACE WATER
 SUPPLY PROJECT**

Open Cut (LF) by Project

Project ID	Bid Quantity (LF)
A1-A2	44,582
B1-B2	42,519
B3	210
C1	33,292
C2	23,760
S3-A1	12,750
S3-A2	11,402
S3-A3	5,670
S3-A4	9,882
Total	184,067

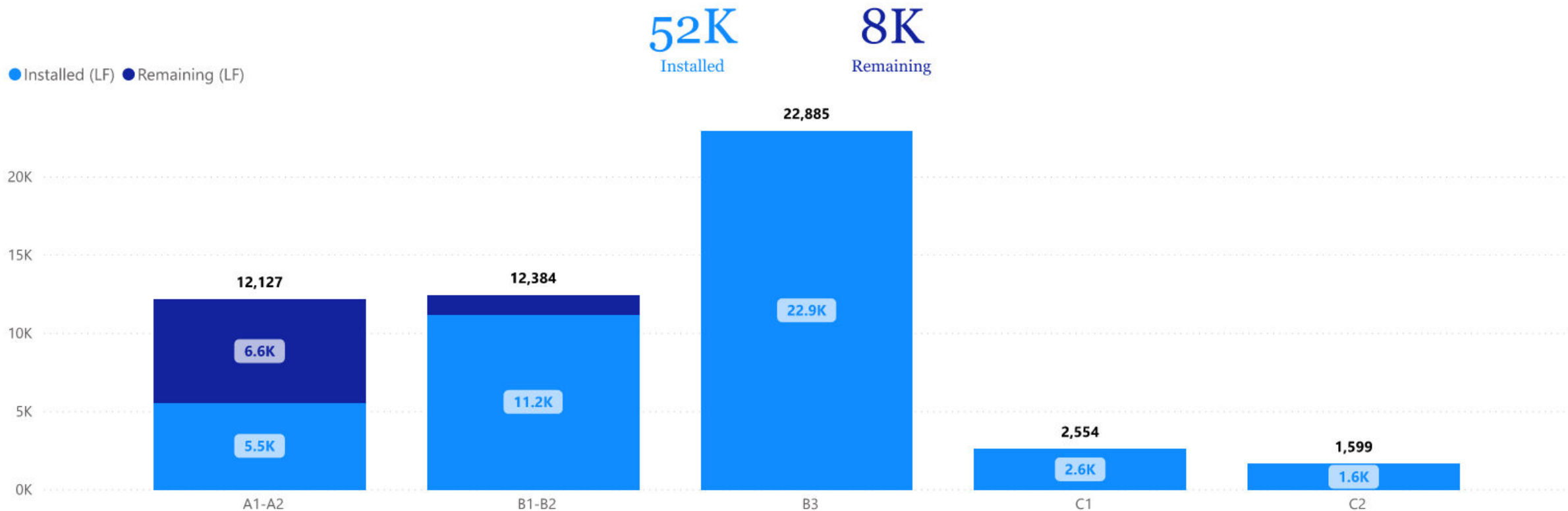




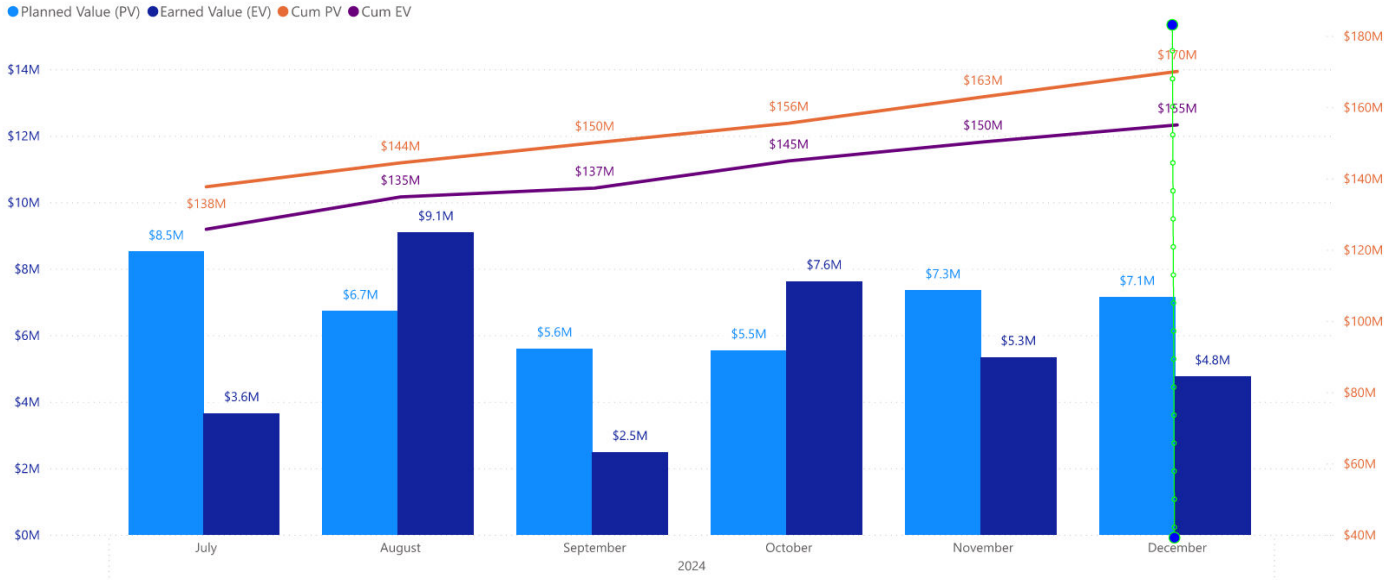
WHCRWA NFBWA
SURFACE WATER
SUPPLY PROJECT

Tunneling (LF) by Project

Project ID	Bid Quantity (LF)
A1-A2	12,127
B1-B2	12,384
B3	22,885
C1	2,554
C2	1,599
S3-A1	1,270
S3-A2	2,626
S3-A3	3,076
S3-A4	1,198
Total	59,719



Segments B1|B2



SWSP Segment B1-B2



Ella Tunnel

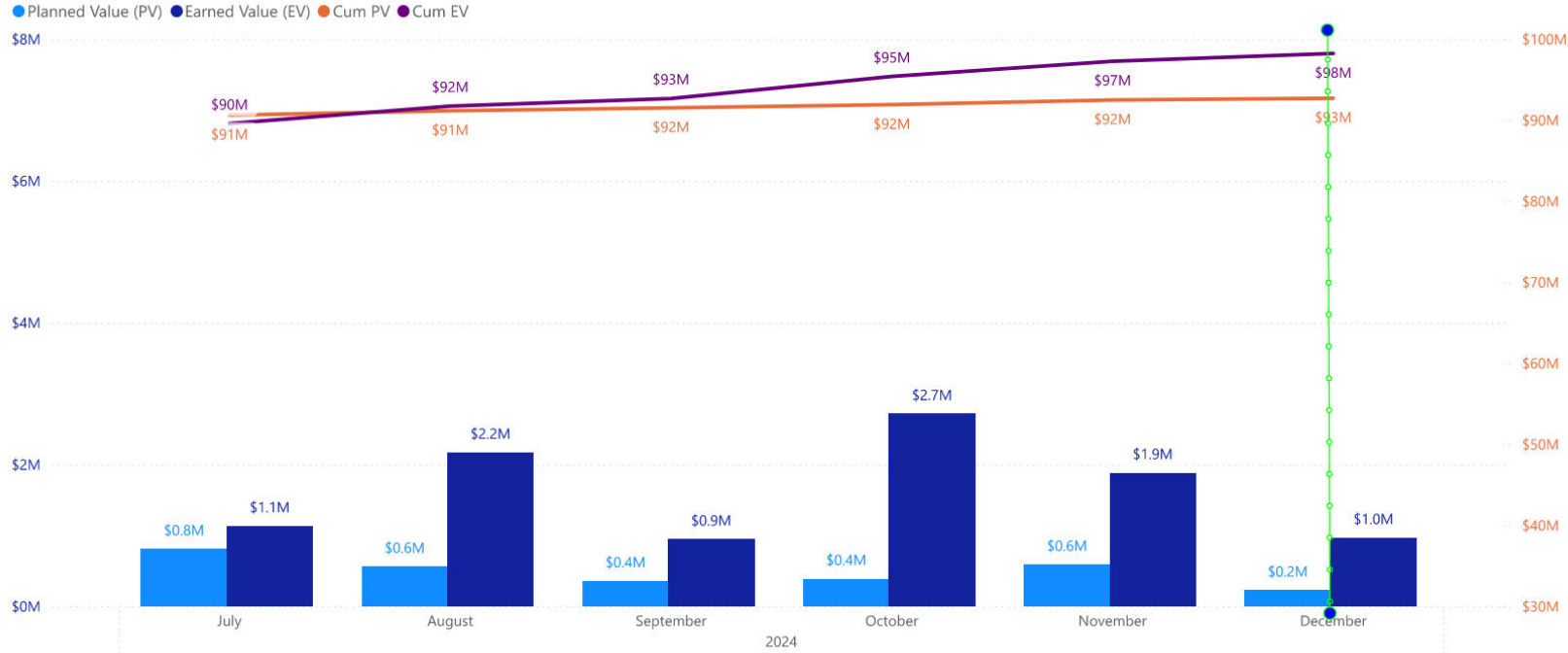


Restoring White Oak Bayou Easement

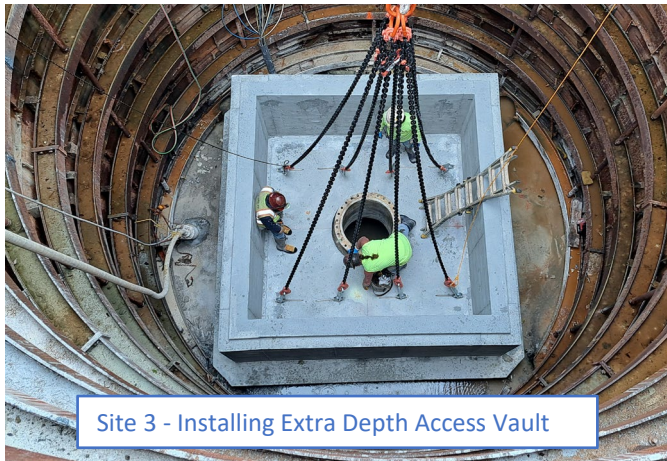


Completing Flanges at Beltway 8 Shafts

Segment B3



Site 6 – Installing Access Closure Piece



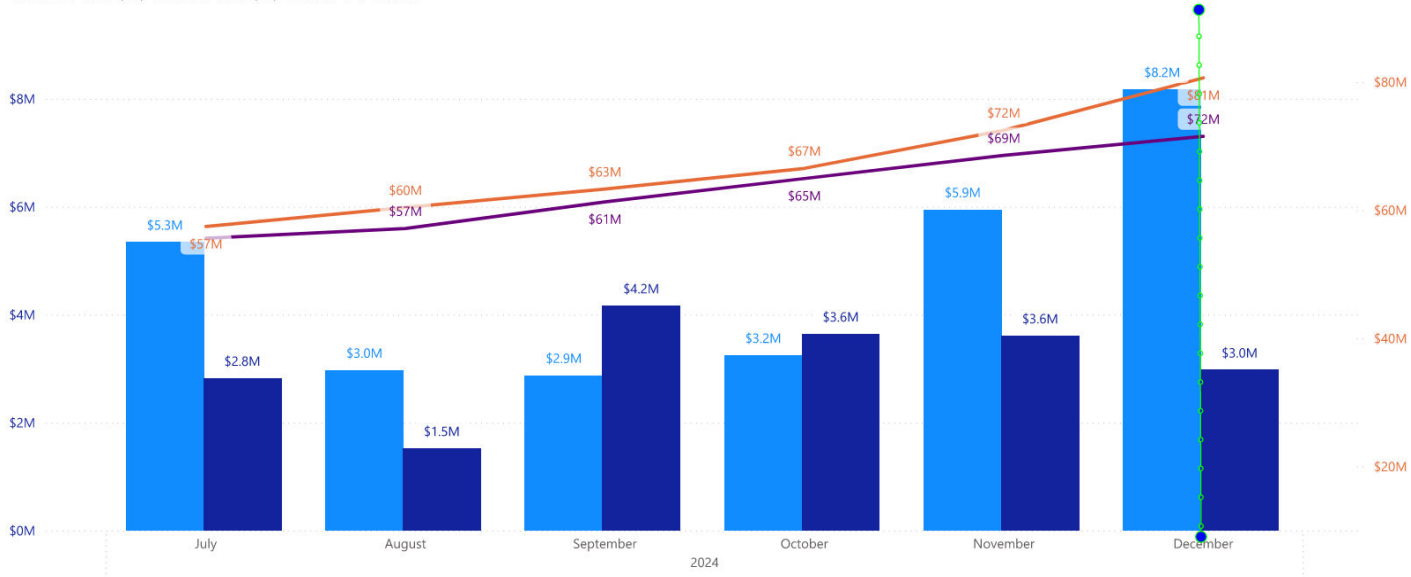
Site 3 - Installing Extra Depth Access Vault



Site 6 - Backfilling Closure Piece

Central Pump Station

Planned Value (PV) Earned Value (EV) Cum PV Cum EV



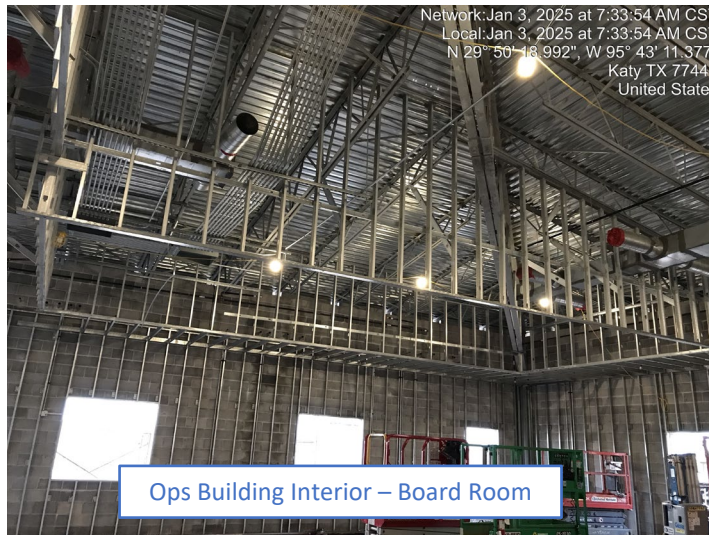
SWSP Central Pump Station



High Service Pump Station Exterior

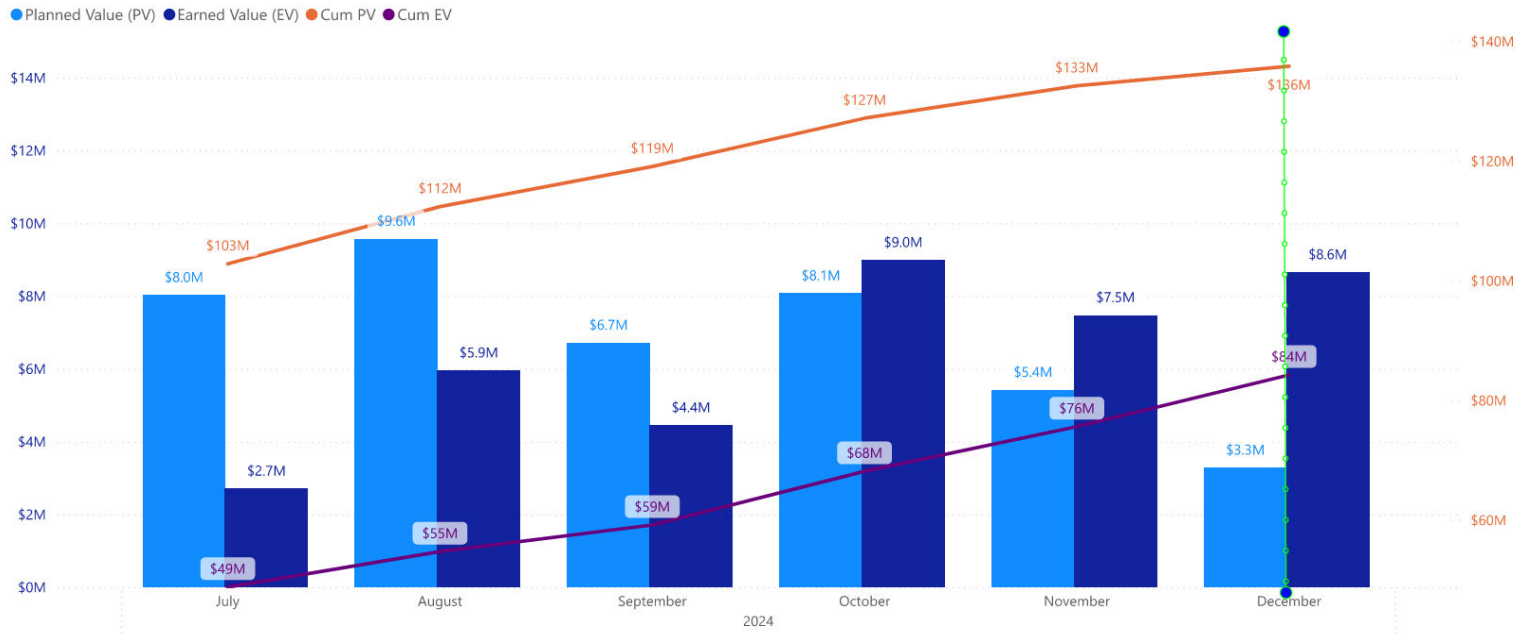


High Service Pump Station Interior



Ops Building Interior – Board Room

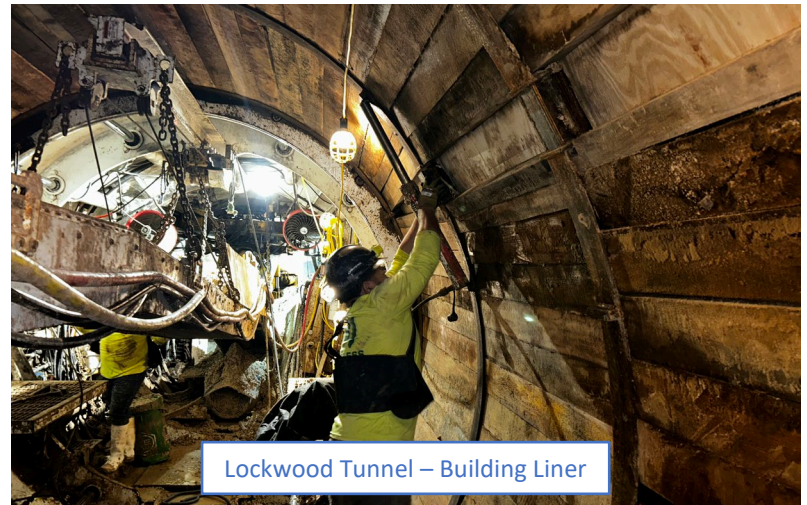
Segments A1|A2



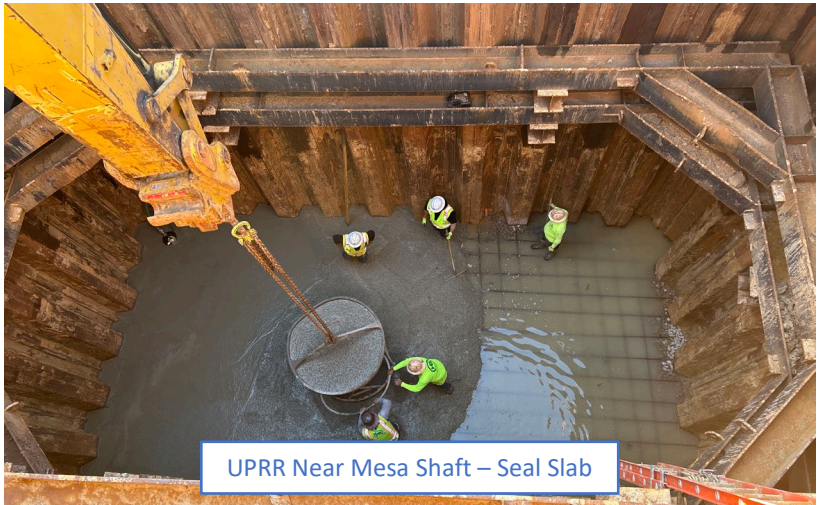
SWSP Segment A1-A2



Greens Bayou Tunnel Machine – Leaving Site



Lockwood Tunnel – Building Liner



UPRR Near Mesa Shaft – Seal Slab

Project Name

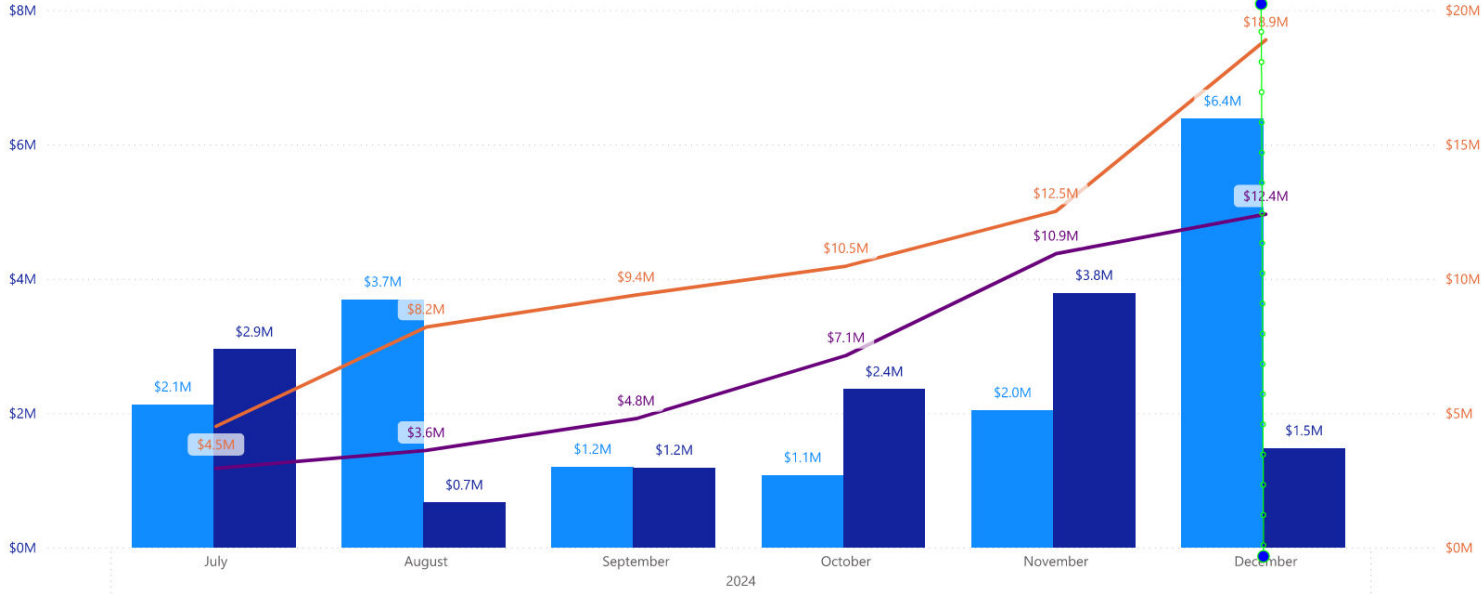
Re-Pump Station

7/25/2024 12/25/2024



Re-Pump Station

Planned Value (PV) Earned Value (EV) Cum PV Cum EV



SWSP Repump Station



GST 1 Outlet Pipe Encasement

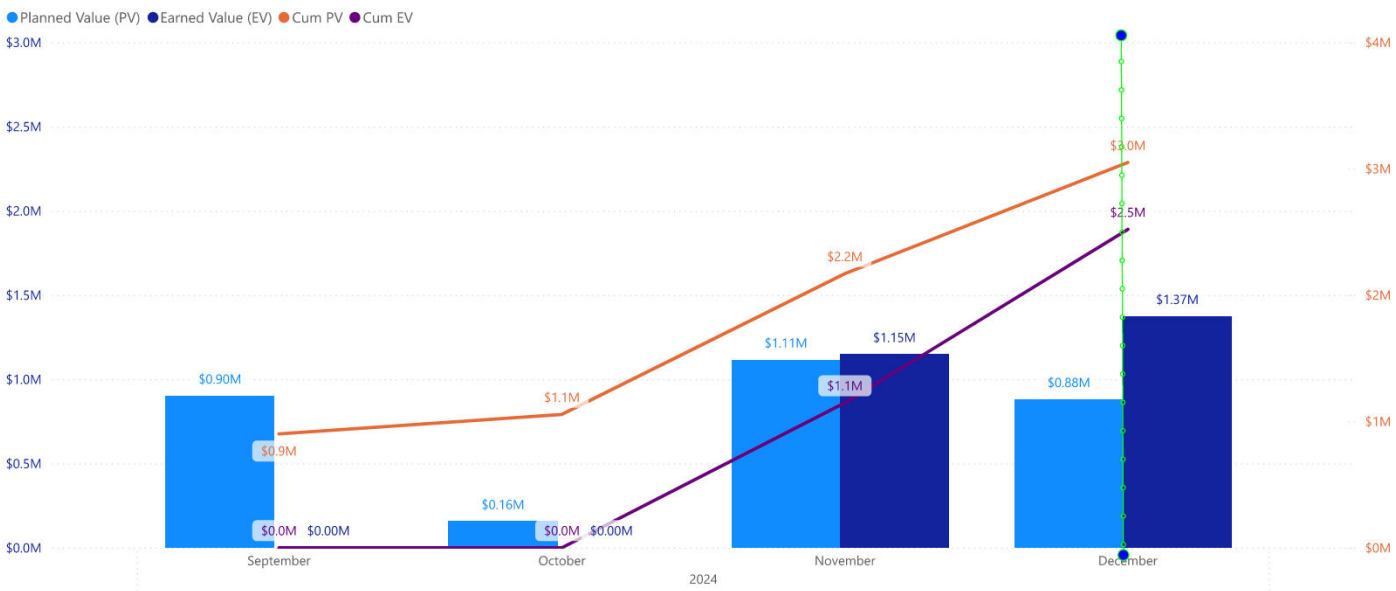


GST 1 Site



Duct bank Encasement

NE Meter Station



SWSP Northeast Meter Station



Surveying for Drilled Shafts



NEMS Detention Pond Site



Setting Rebar Cages in Drilled Shafts



Drilling Shafts