

October 2024 Monthly Construction Status Report

Updated: 11.11.24



A1-A2 - Little York Tunnel

WHCRWA Ongoing Surface Water Supply Projects

Segment B1-B2

3 MILES OF 84-INCH DIAMETER AND 8 MILES OF 96-INCH WATERLINES FROM WEST OF BRITTMOORE ROAD TO WEST OF I-45

Segment B3

4.4 MILES OF 96-INCH DIAMETER WATER LINES FROM WEST OF I-45 TO THE SOUTH SIDE OF HOPPER RD. VIA TUNNEL

Segment 3 - A1 to Segment 3 – A3 (3 Projects)

7 MILES OF 42-INCH WATER LINE ALONG CENTERPOINT ENERGY CORRIDOR FROM NORTH OF LAKESIDE FOREST LN TO SEGMENT C

Segment C1

5 MILES OF 84-INCH, 66-INCH, AND 36-INCH WATER LINE FROM WESTFIELD VILLAGE DRIVE TO HIGHWAY 6

Central Pump Station

CONSTRUCTION OF A CENTRAL PUMP STATION THAT WILL RECEIVE WATER FROM THE RE-PUMP STATION AND THEN TRANSFER WATER TO MUDS

Segment A1-A2

11 MILES OF 96-INCH WATER LINE FROM HOPPER RD. TO THE WHCRWA METER STATION NEAR THE NEWPP

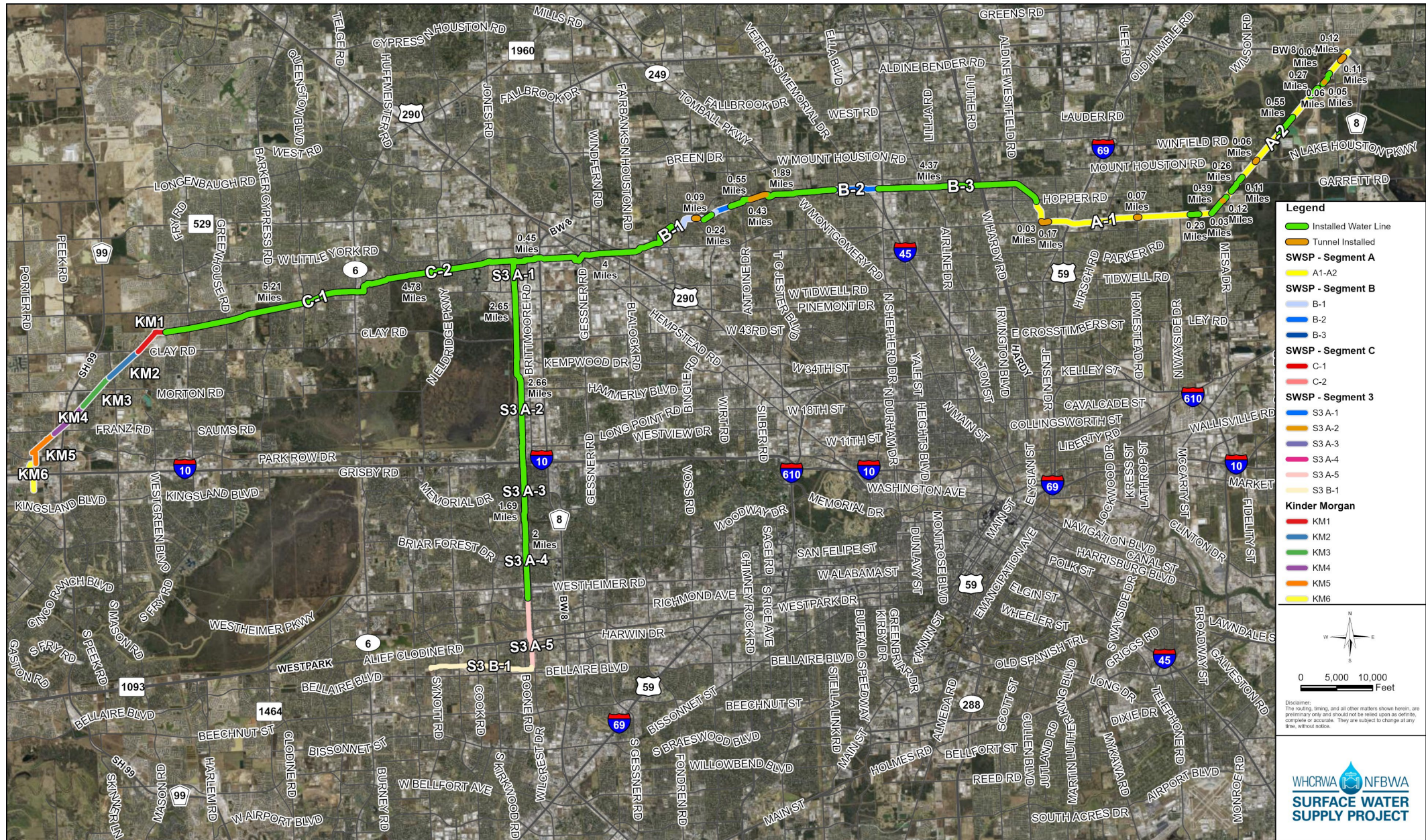
Repump Station

CONSTRUCTION OF A 160 MGD REPUMP STATION FACILITY INCLUDING TWO 10 MILLION GALLON TANKS

Kinder Morgan – KM4 and KM6

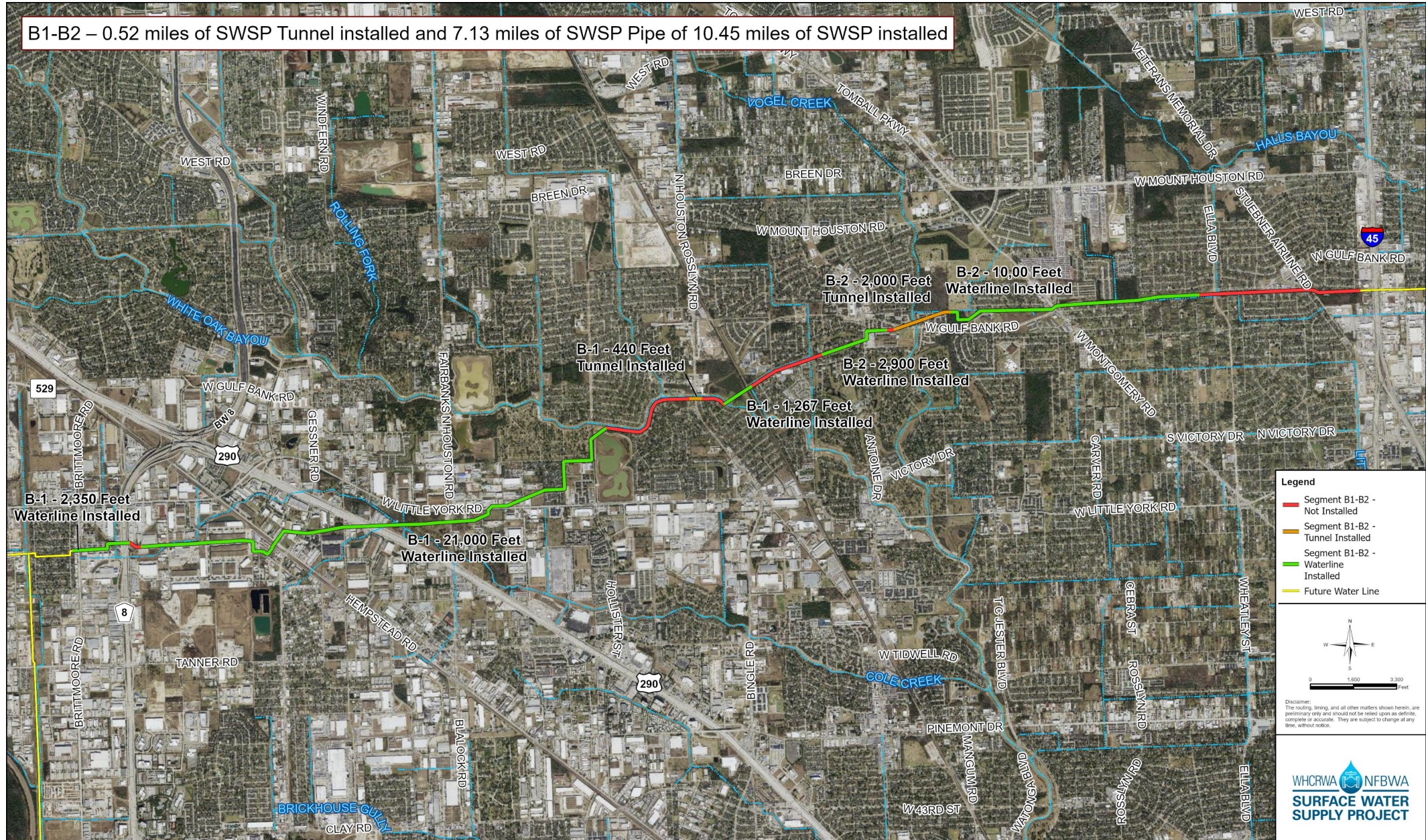
2 MILES OF 66-INCH WATER LINE IN KINDER MORGAN CORRIDOR

Current SWSP Construction Projects Overview



Construction Progress – Segment B1-B2

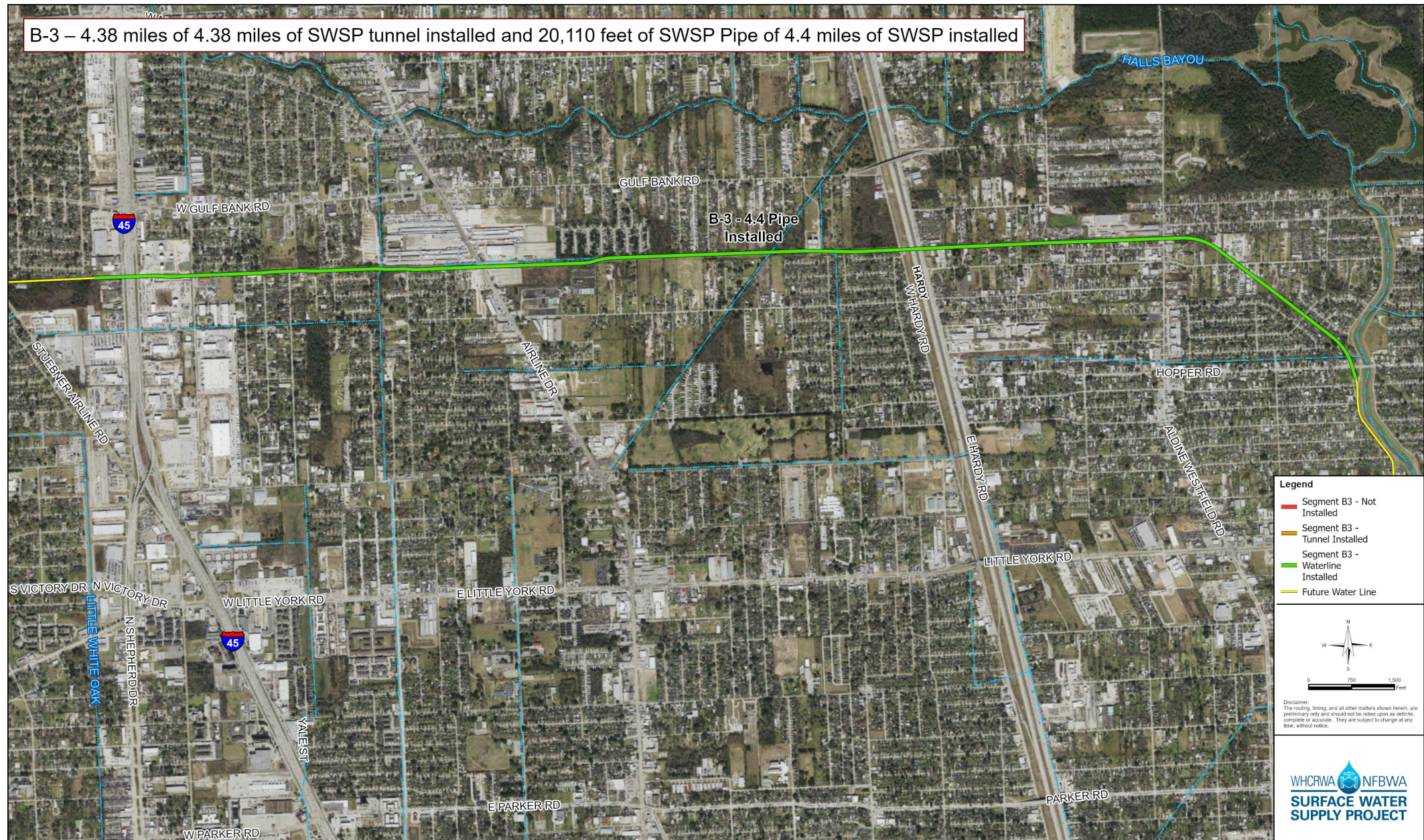
B1-B2 – 0.52 miles of SWSP Tunnel installed and 7.13 miles of SWSP Pipe of 10.45 miles of SWSP installed



SWSP Contract Segment B1-B2 - Construction Progress

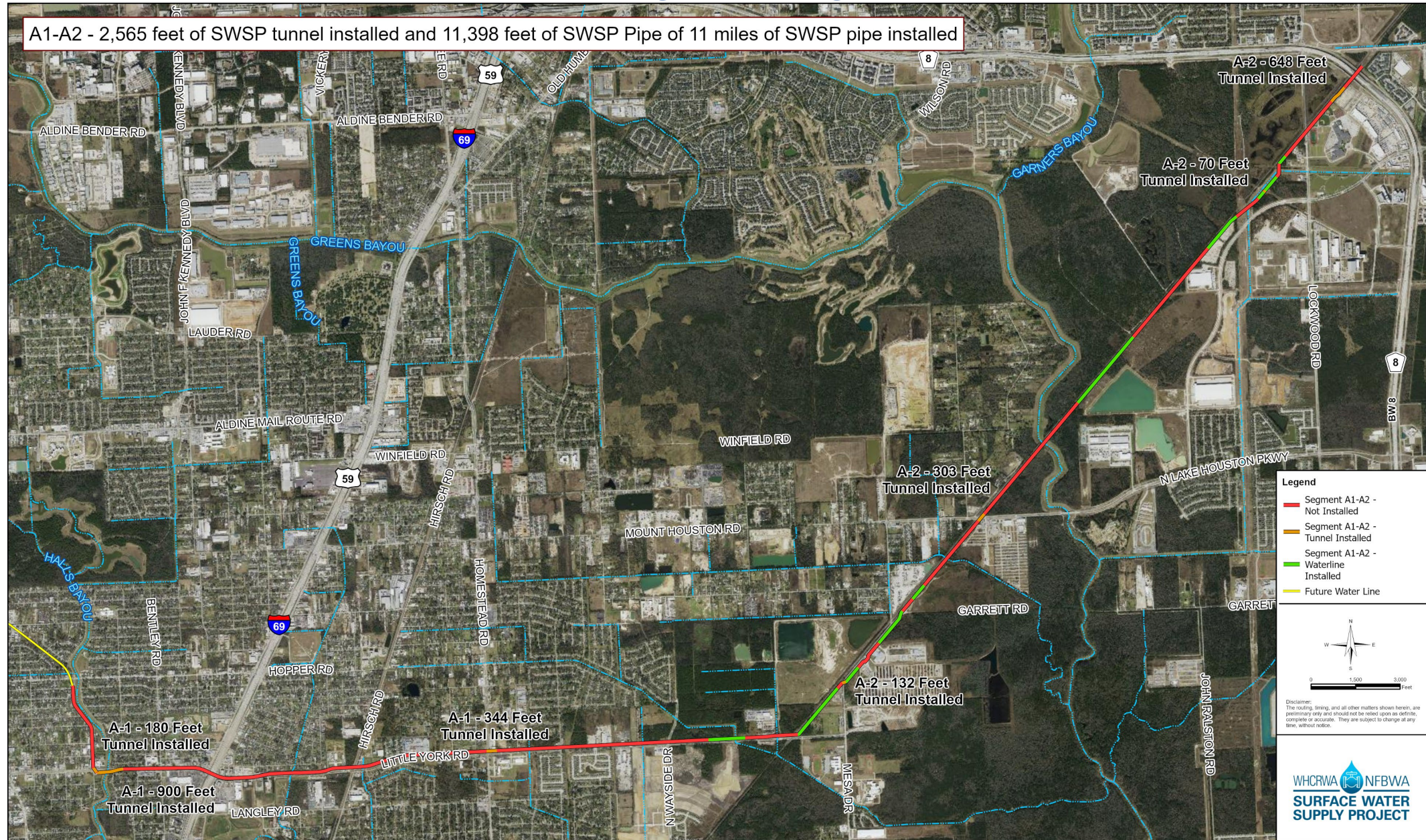
Construction Progress – Segment B3

B-3 – 4.38 miles of 4.38 miles of SWSP tunnel installed and 20,110 feet of SWSP Pipe of 4.4 miles of SWSP installed



SWSP Contract Segment B-3 - Construction Progress

Construction Progress – Segment A1-A2

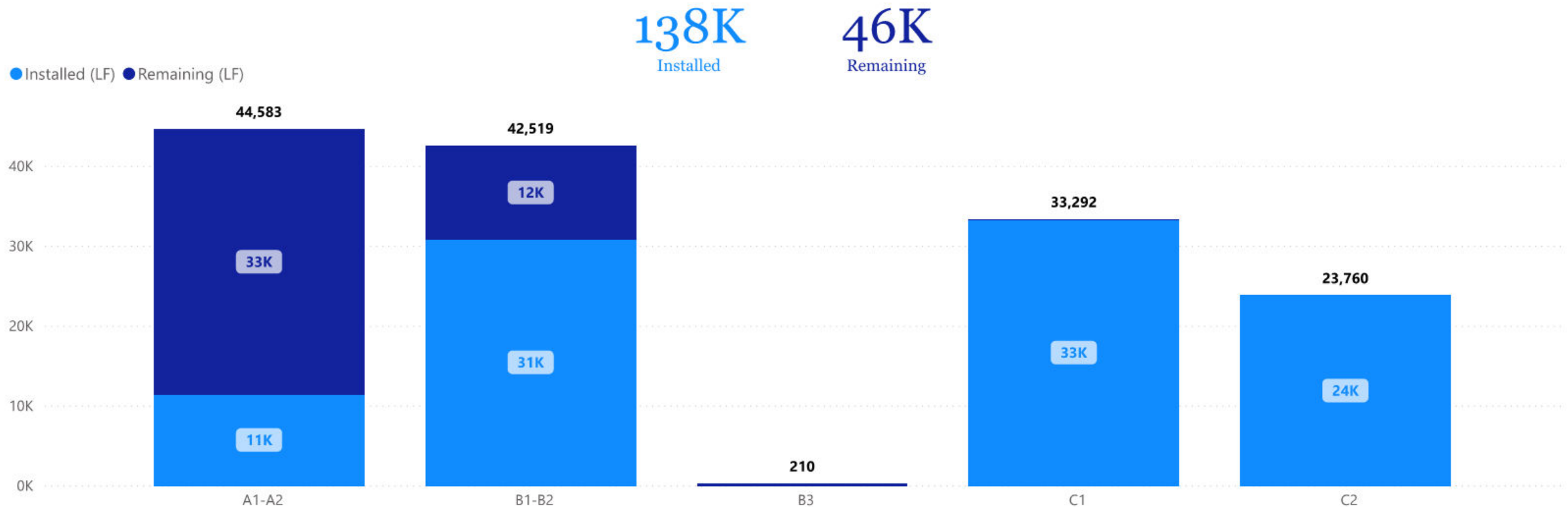


SWSP Contract Segment A1-A2 - Construction Progress



Open Cut (LF) by Project

Project ID	Bid Quantity (LF)
S3-A4	9,882
S3-A3	5,670
S3-A2	11,402
S3-A1	12,750
C2	23,760
C1	33,292
B3	210
B1-B2	42,519
A1-A2	44,582
Total	184,067

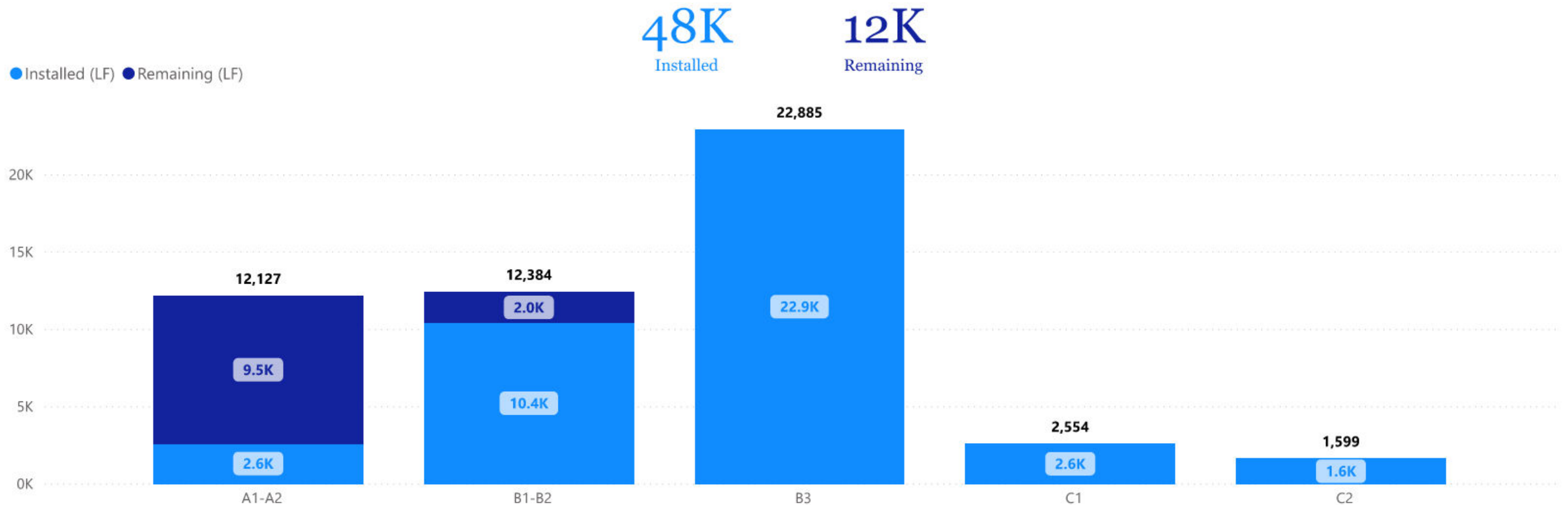




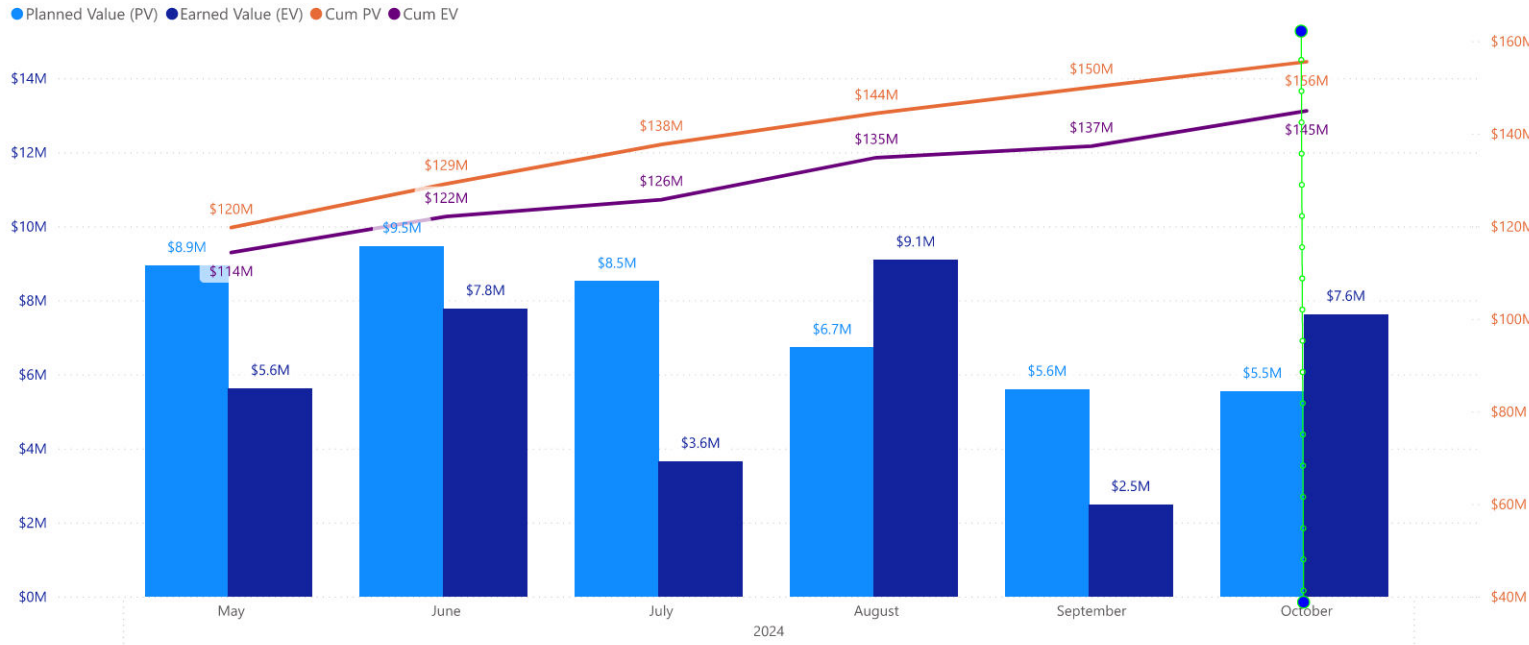
WHCRWA NFBWA SURFACE WATER SUPPLY PROJECT

Tunneling (LF) by Project

Project ID	Bid Quantity (LF)
A1-A2	12,127
B1-B2	12,384
B3	22,885
C1	2,554
C2	1,599
S3-A1	1,270
S3-A2	2,626
S3-A3	3,076
S3-A4	1,198
Total	59,719



Segments B1|B2



SWSP Segment B1-B2



Backfilling Trench with Pea Gravel within Fault Zone



Preparing CAV Vent Piping for Installation

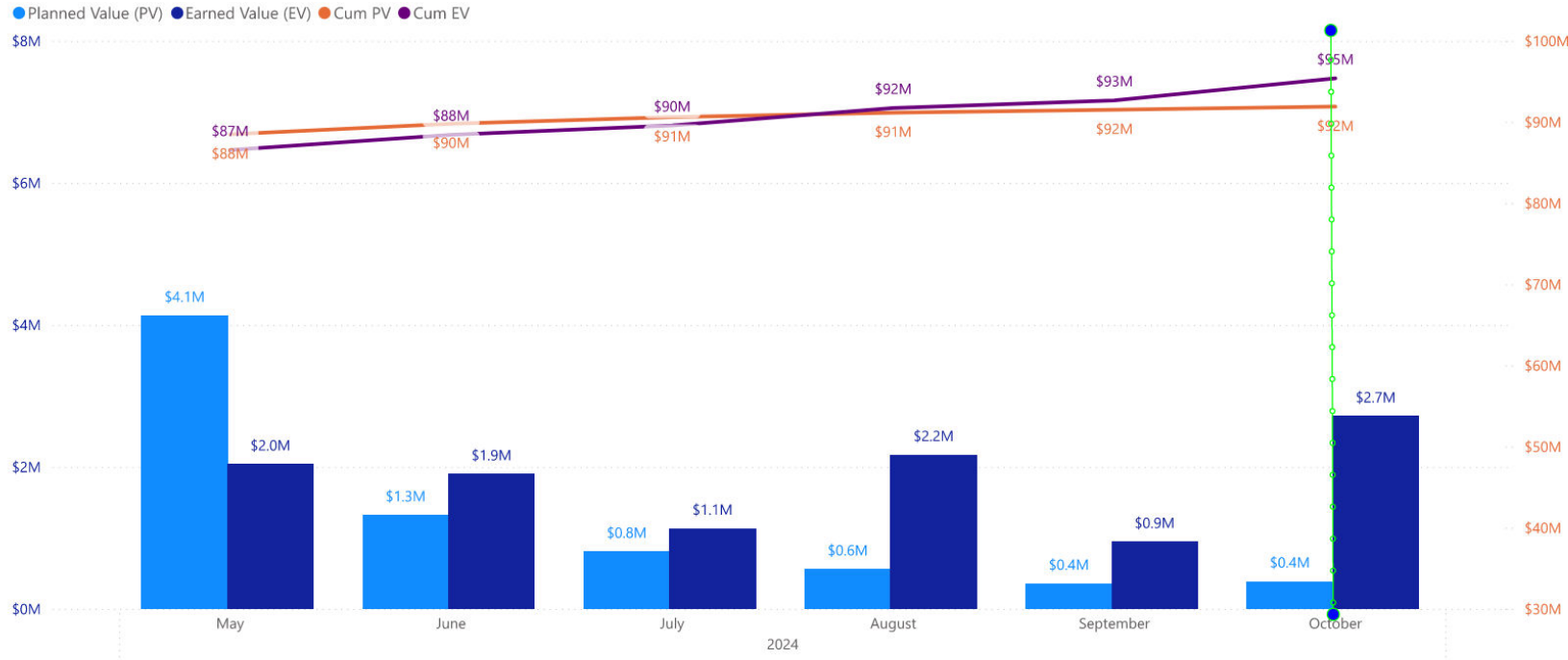


Lowering Pipe Into Trench

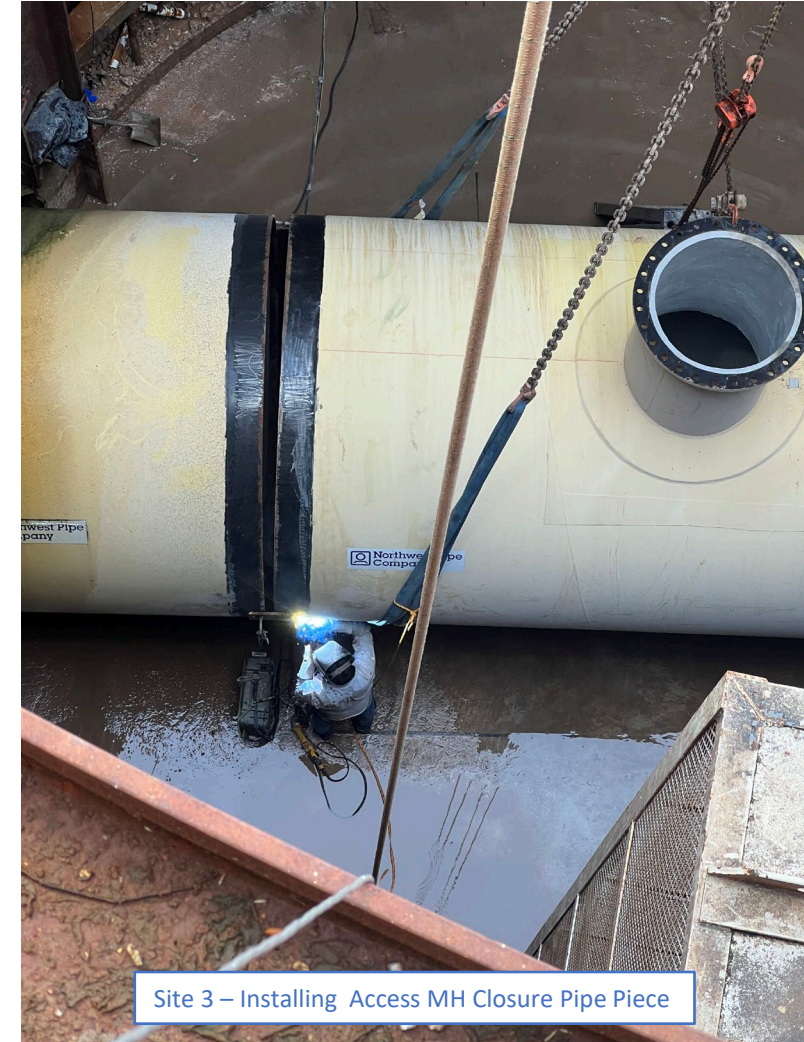
Project Name
Segment B3

5/25/2024 10/25/2024

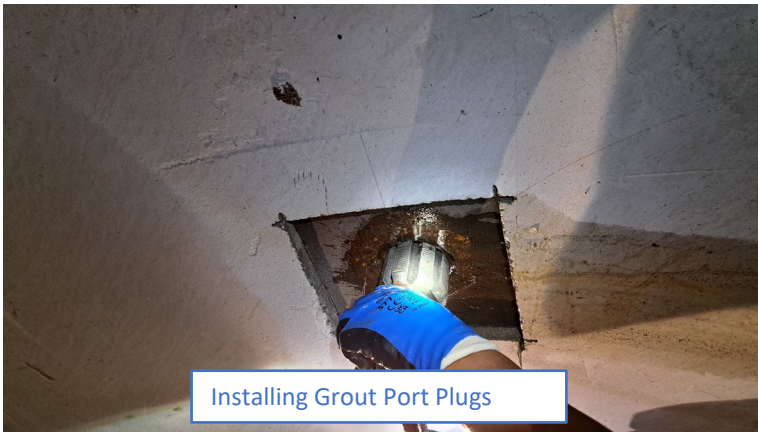
Segment B3



SWSP Segment B3



Site 3 – Installing Access MH Closure Pipe Piece

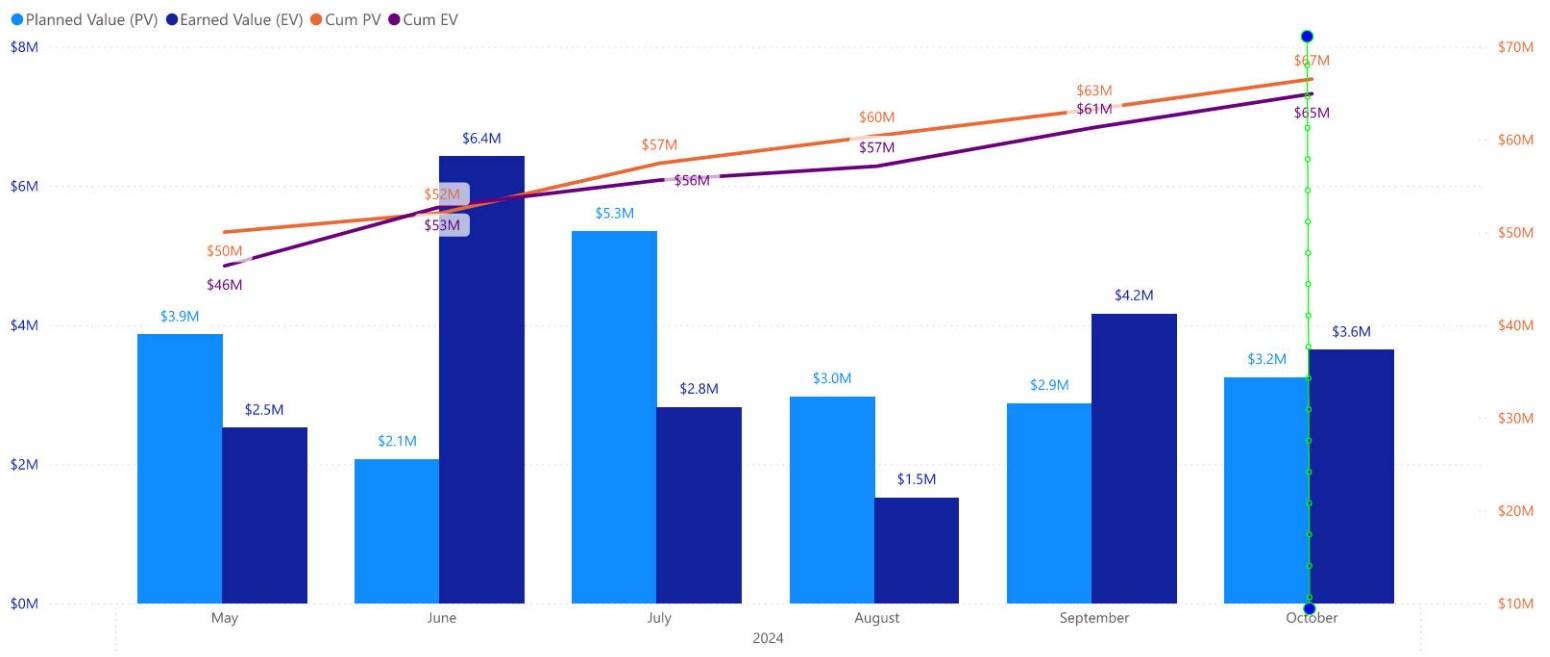


Installing Grout Port Plugs



Welding Grout Ports Steel Plates

Central Pump Station



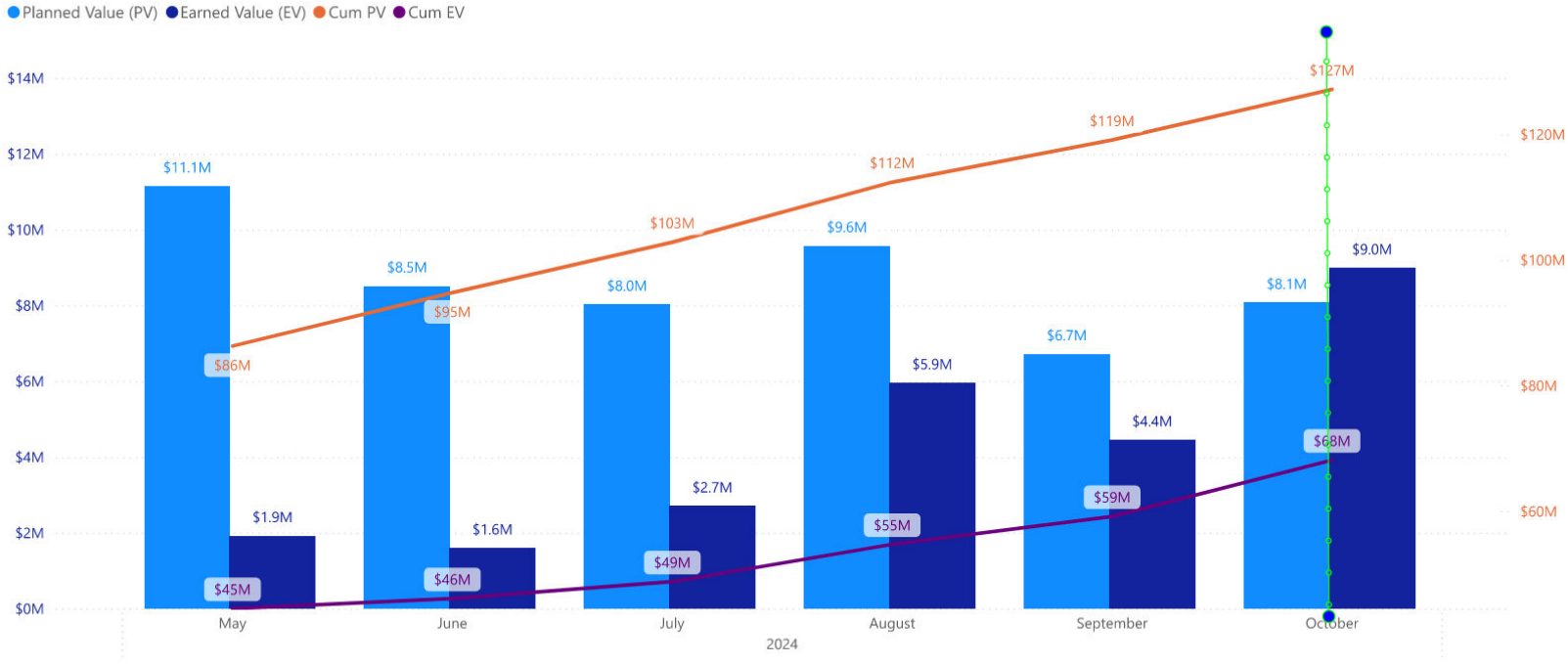
Project Name

Segments A1 & A2

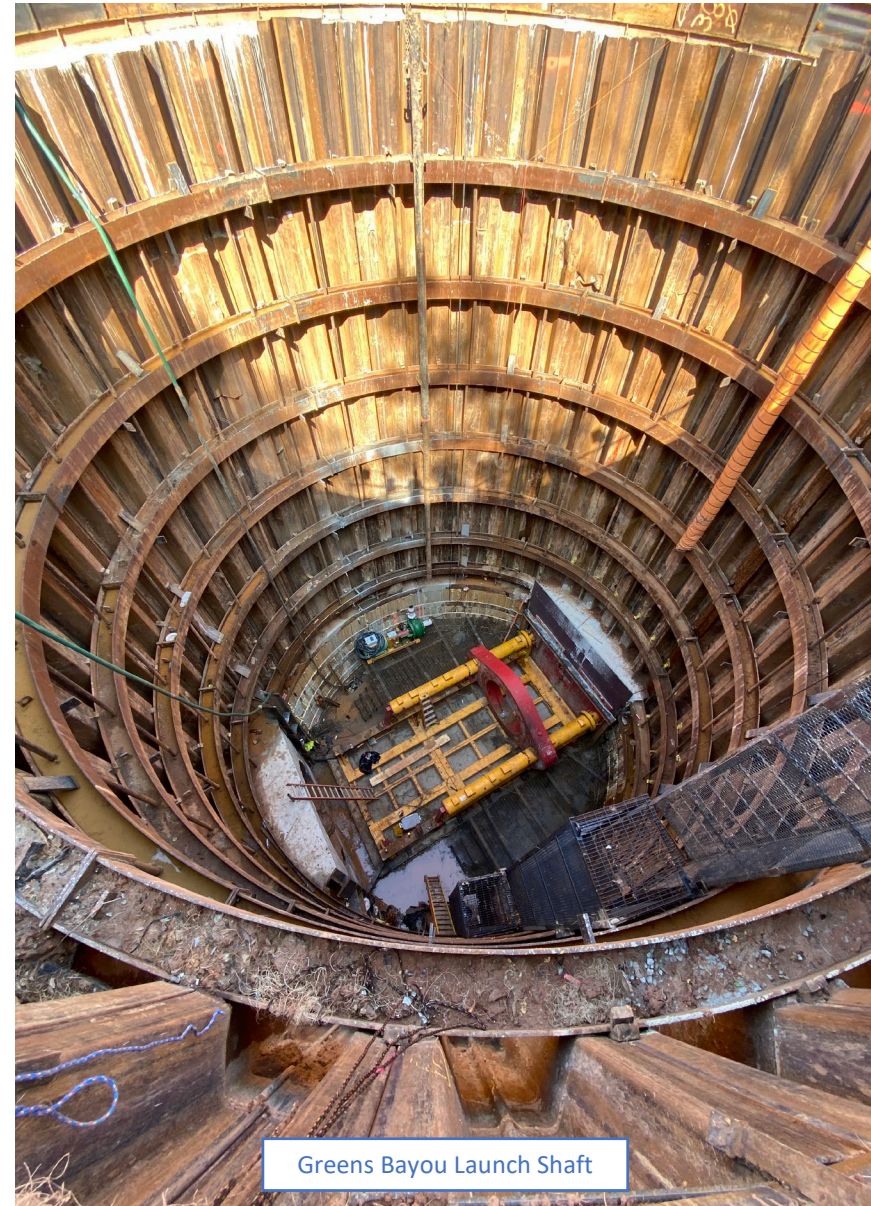
5/25/2024

10/25/2024

Segments A1|A2



SWSP Segment A1-A2

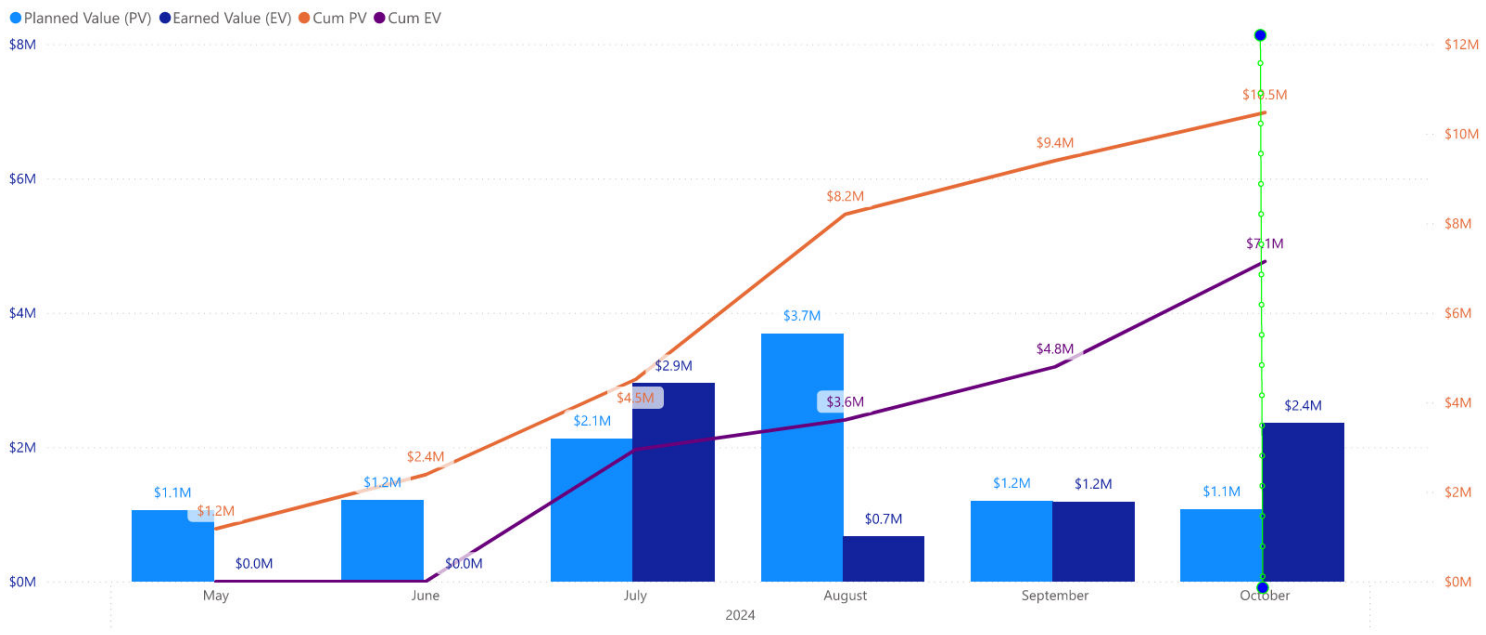


Project Name
Re-Pump Station

5/25/202410/25/2024



Re-Pump Station



SWSP Repump Station



Pump Station Grade Beams



GST Earthwork and Geogrid Install



Ductbank Preparation