

August 2024 Monthly Construction Status Report

Updated: 09.05.24



SWSP Central Pump Station at Sunrise

WHCRWA Ongoing Surface Water Supply Projects

Segment B1-B2

3 MILES OF 84-INCH DIAMETER AND 8 MILES OF 96-INCH WATERLINES FROM WEST OF BRITTMOORE ROAD TO WEST OF I-45

Segment B3

4.4 MILES OF 96-INCH DIAMETER WATER LINES FROM WEST OF I-45 TO THE SOUTH SIDE OF HOPPER RD. VIA TUNNEL

Segment 3 - A1 to Segment 3 – A3 (3 Projects)

7 MILES OF 42-INCH WATER LINE ALONG CENTERPOINT ENERGY CORRIDOR FROM NORTH OF LAKESIDE FOREST LN TO SEGMENT C

Segment C1

5 MILES OF 84-INCH, 66-INCH, AND 36-INCH WATER LINE FROM WESTFIELD VILLAGE DRIVE TO HIGHWAY 6

Segment C2

5 MILES OF 84-INCH WATER LINE FROM HIGHWAY 6 TO BRITTMOORE RD.

Central Pump Station

CONSTRUCTION OF A CENTRAL PUMP STATION THAT WILL RECEIVE WATER FROM THE RE-PUMP STATION AND THEN TRANSFER WATER TO MUDS

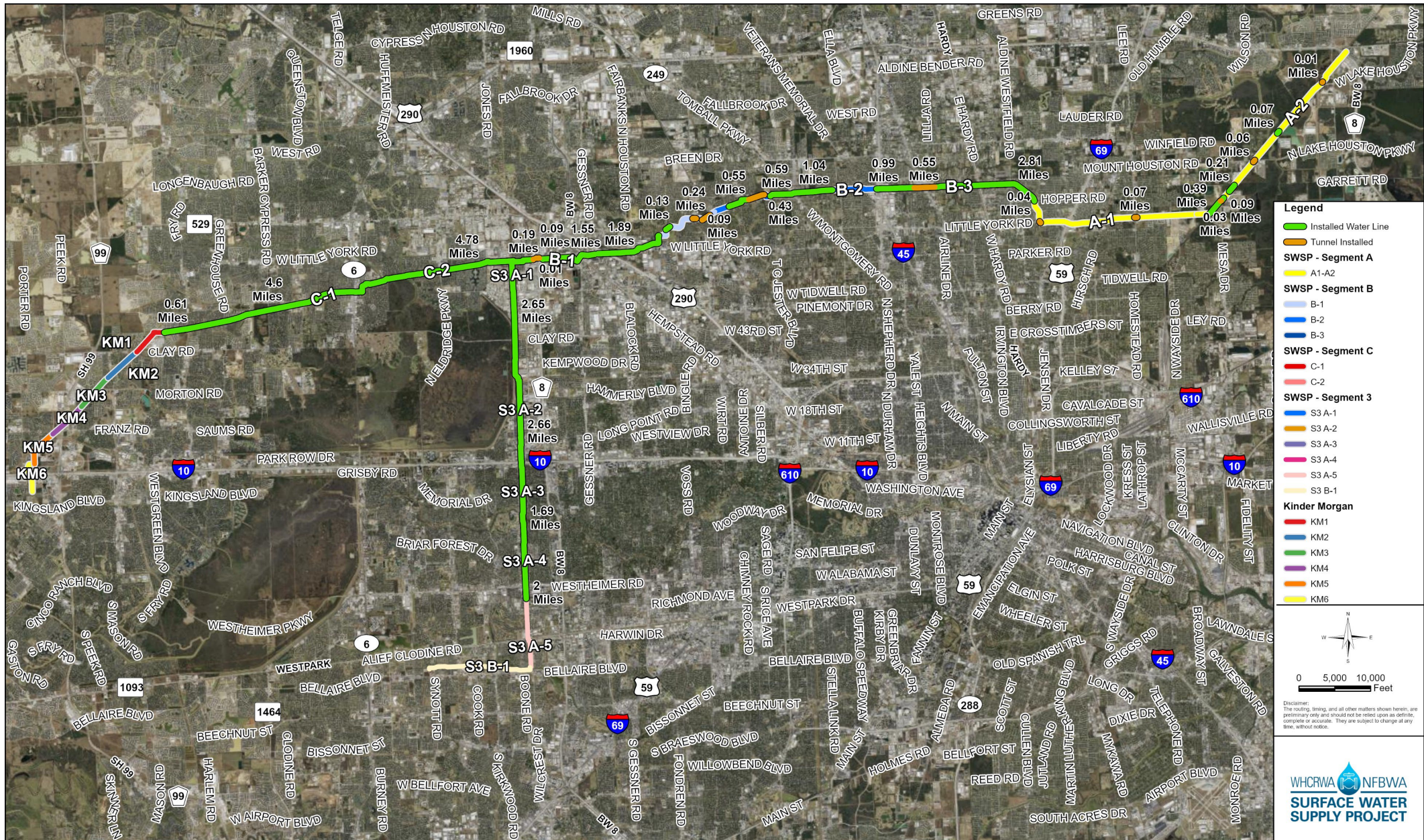
Segment A1-A2

11 MILES OF 96-INCH WATER LINE FROM HOPPER RD. TO THE WHCRWA METER STATION NEAR THE NEWPP

Repump Station

CONSTRUCTION OF A 160 MGD REPUMP STATION FACILITY INCLUDING TWO 10 MILLION GALLON TANKS

Current SWSP Construction Projects Overview



Legend

- Installed Water Line
- Tunnel Installed
- SWSP - Segment A
 - A1-A2
- SWSP - Segment B
 - B-1
 - B-2
 - B-3
- SWSP - Segment C
 - C-1
 - C-2
- SWSP - Segment 3
 - S3 A-1
 - S3 A-2
 - S3 A-3
 - S3 A-4
 - S3 A-5
 - S3 B-1
- Kinder Morgan
 - KM1
 - KM2
 - KM3
 - KM4
 - KM5
 - KM6

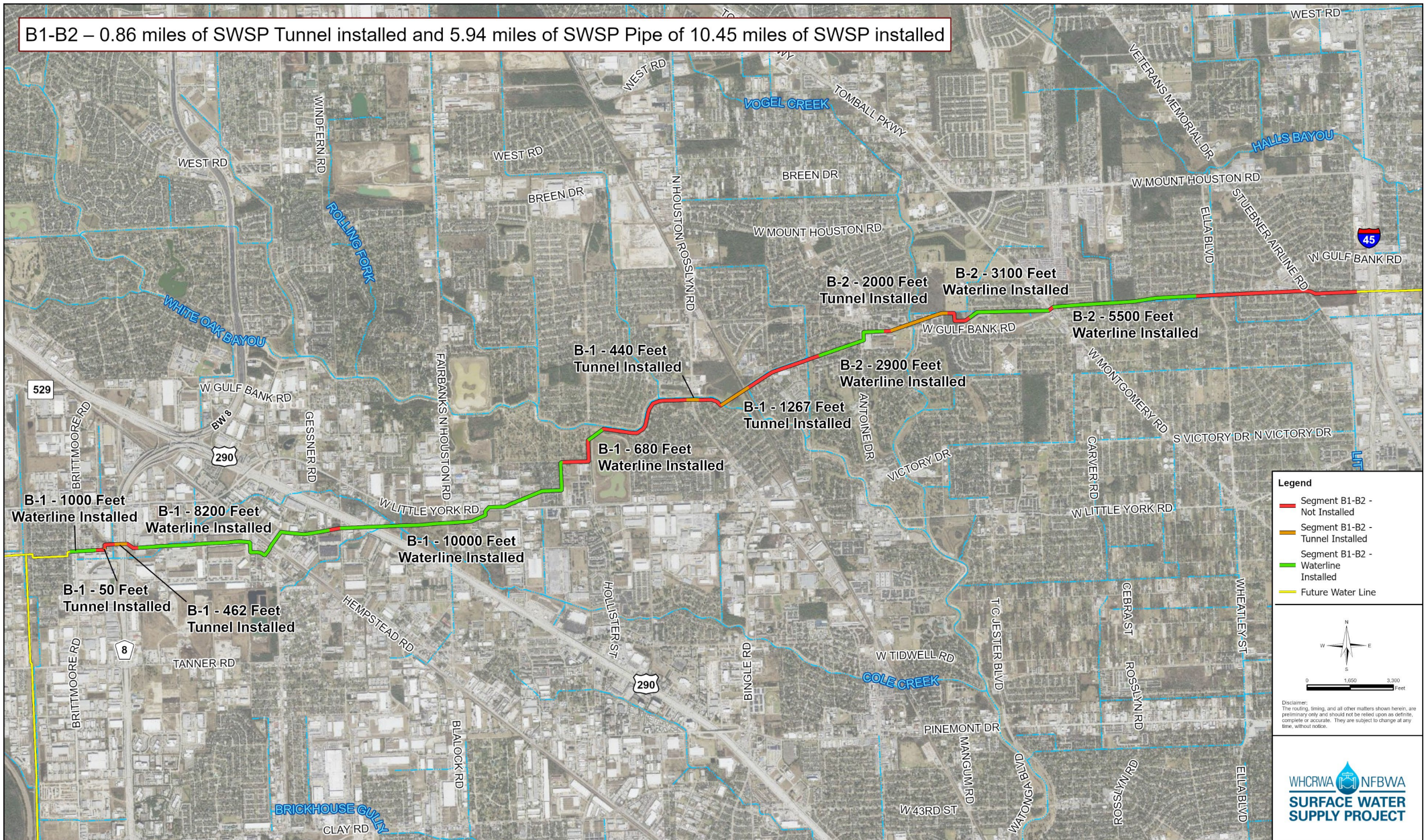
0 5,000 10,000 Feet

Disclaimer:
The routing, timing, and all other matters shown herein are preliminary only and should not be relied upon as definite, complete or accurate. They are subject to change at any time, without notice.



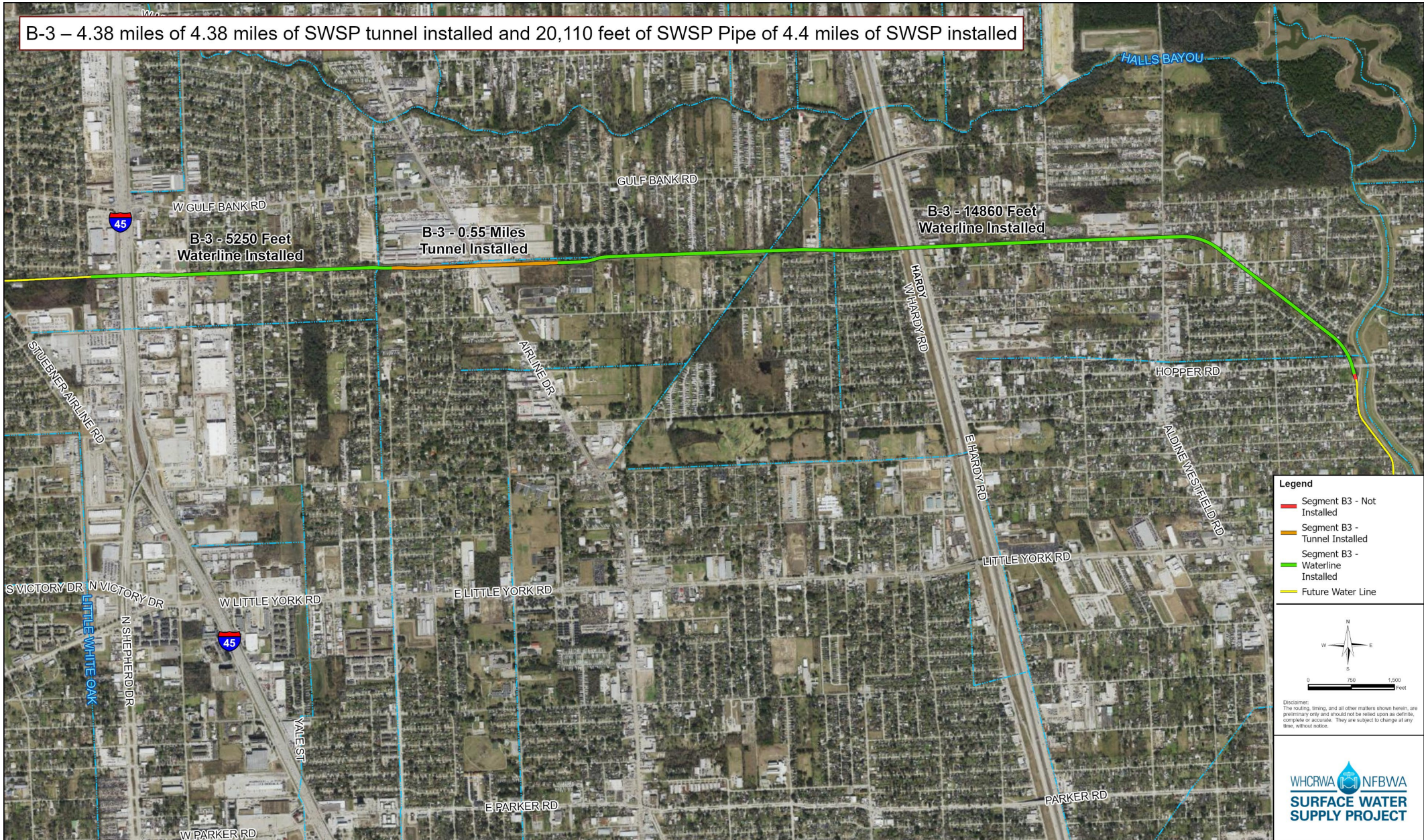
Construction Progress – Segment B1-B2

B1-B2 – 0.86 miles of SWSP Tunnel installed and 5.94 miles of SWSP Pipe of 10.45 miles of SWSP installed



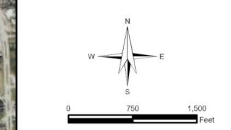
Construction Progress – Segment B3

B-3 – 4.38 miles of 4.38 miles of SWSP tunnel installed and 20,110 feet of SWSP Pipe of 4.4 miles of SWSP installed



Legend

- Segment B3 - Not Installed
- Segment B3 - Tunnel Installed
- Segment B3 - Waterline Installed
- Future Water Line

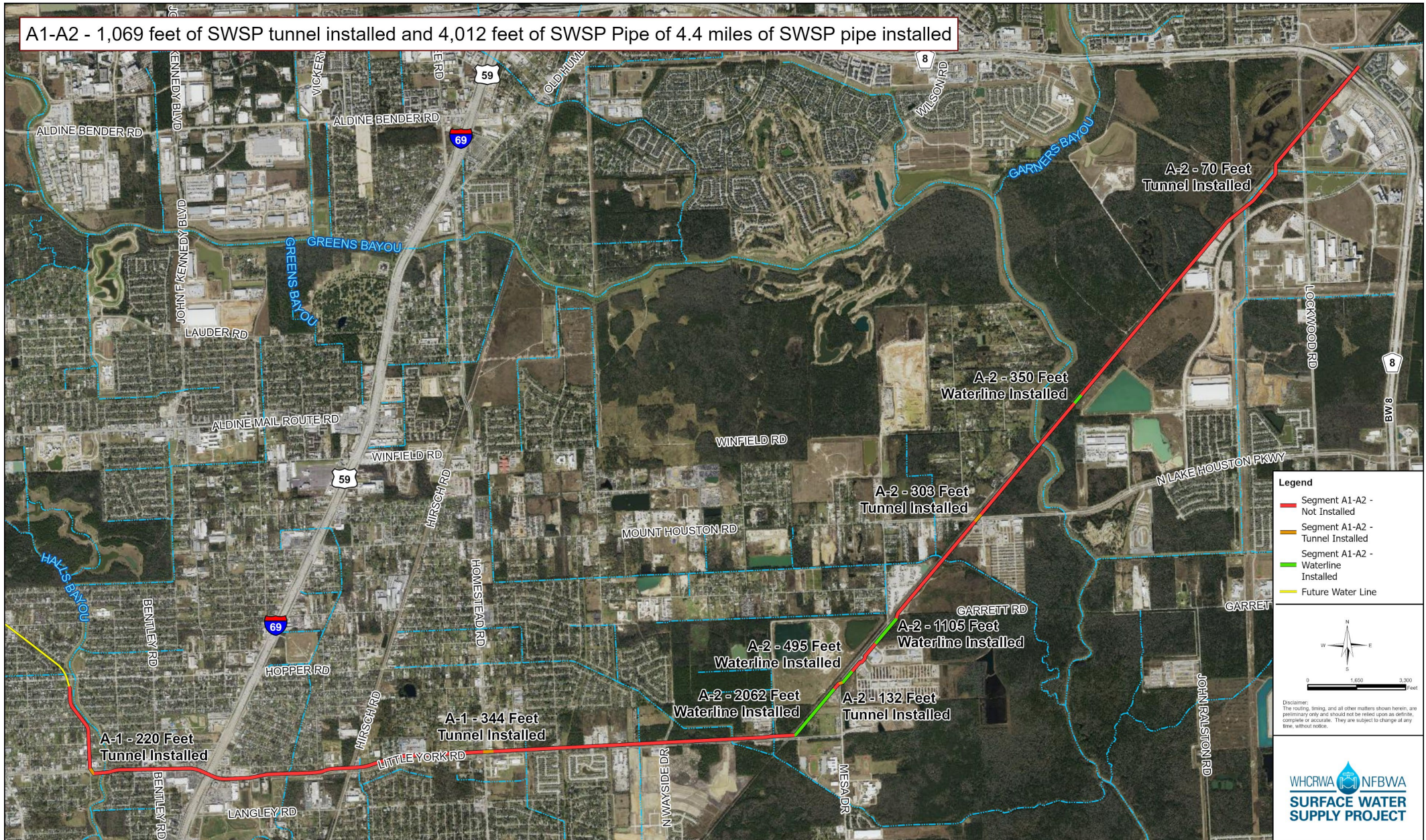


Disclaimer:
The routing, timing, and all other matters shown herein, are preliminary only and should not be relied upon as definite, complete or accurate. They are subject to change at any time, without notice.



Construction Progress – Segment A1-A2

A1-A2 - 1,069 feet of SWSP tunnel installed and 4,012 feet of SWSP Pipe of 4.4 miles of SWSP pipe installed



Legend

- Segment A1-A2 - Not Installed
- Segment A1-A2 - Tunnel Installed
- Segment A1-A2 - Waterline Installed
- Future Water Line

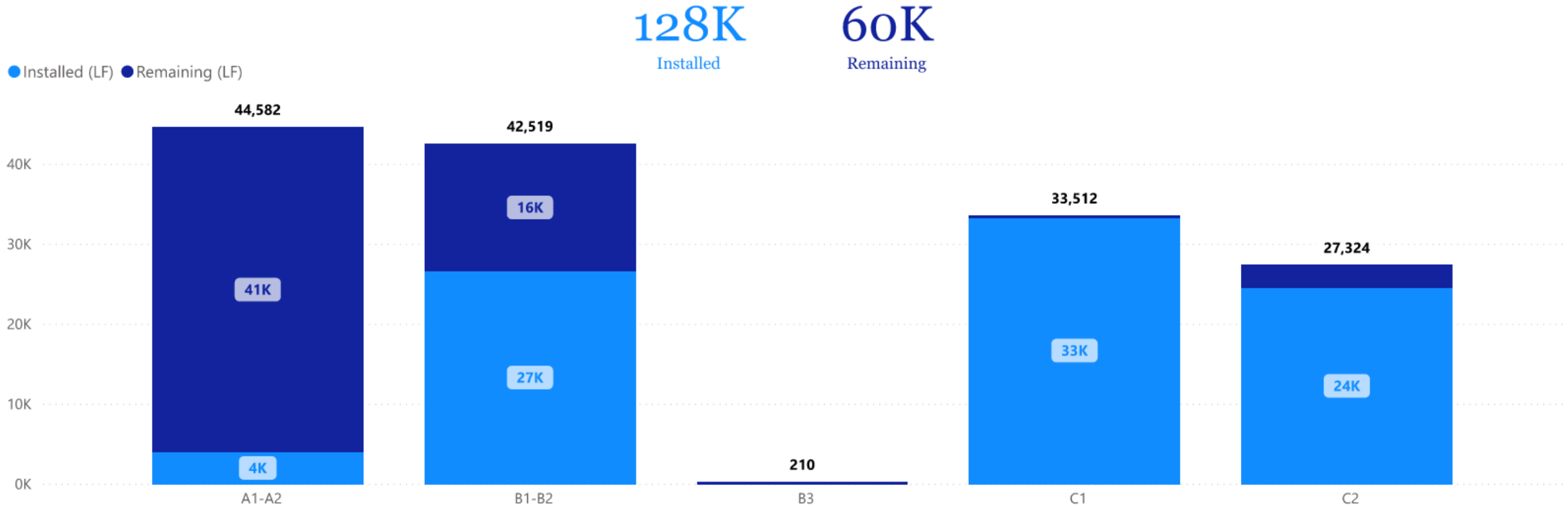
Disclaimer: The routing, timing, and all other matters shown herein, are preliminary only and should not be relied upon as definite, complete or accurate. They are subject to change at any time, without notice.



WHCRWA NFBWA
**SURFACE WATER
 SUPPLY PROJECT**

Project ID	Bid Quantity (LF)
S3-A4	9,882
S3-A3	5,670
S3-A2	11,402
S3-A1	12,750
C2	27,324
C1	33,512
B3	210
B1-B2	42,519
A1-A2	44,582
Total	187,851

Open Cut (LF) by Project

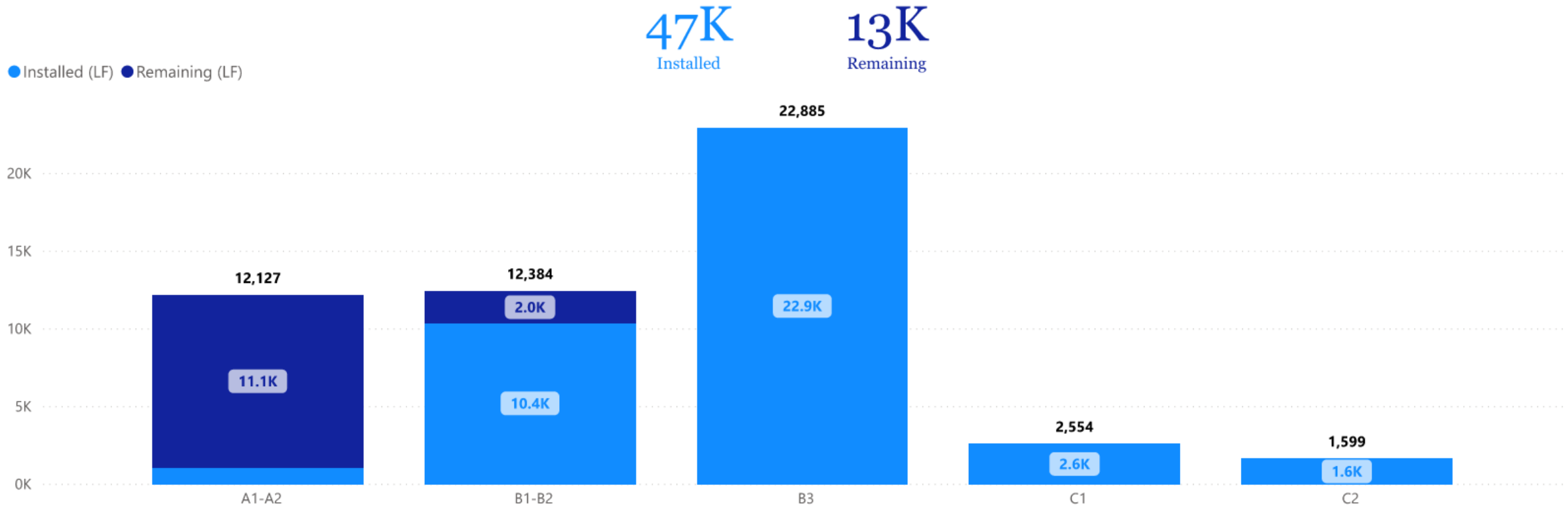




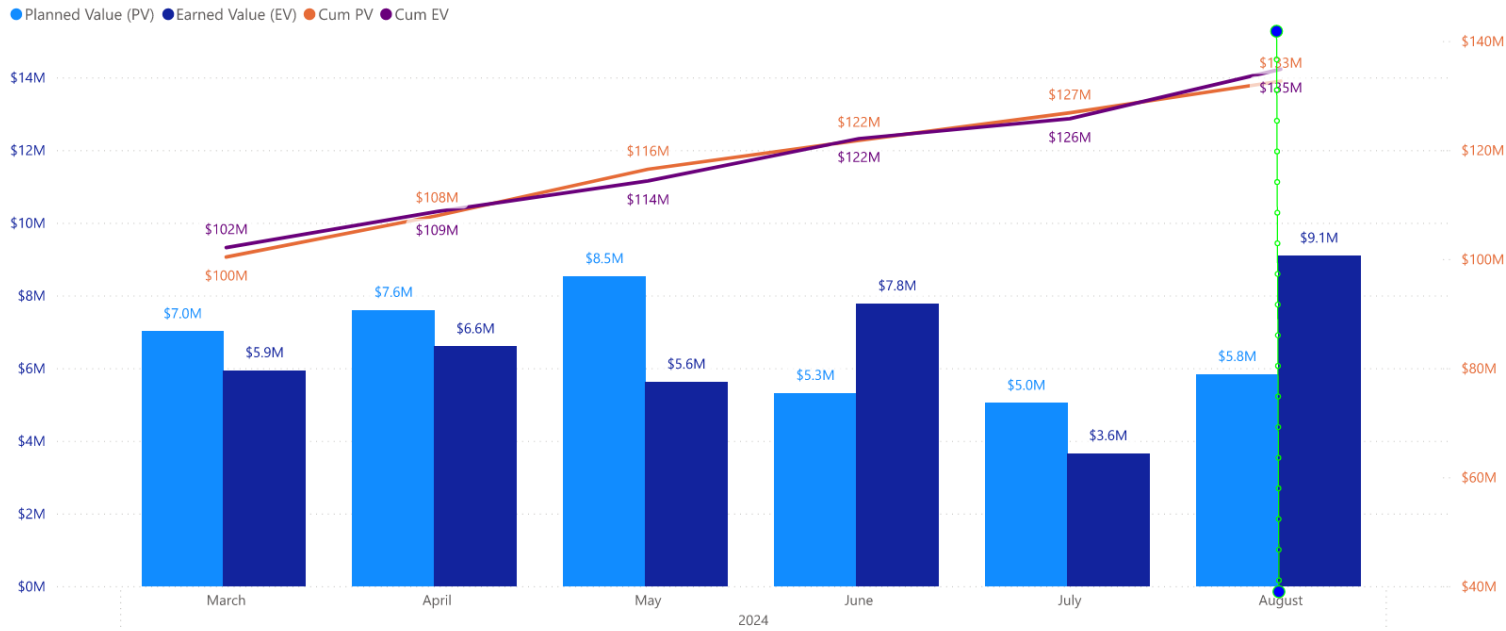
WHCRWA NFBWA
SURFACE WATER
SUPPLY PROJECT

Tunneling (LF) by Project

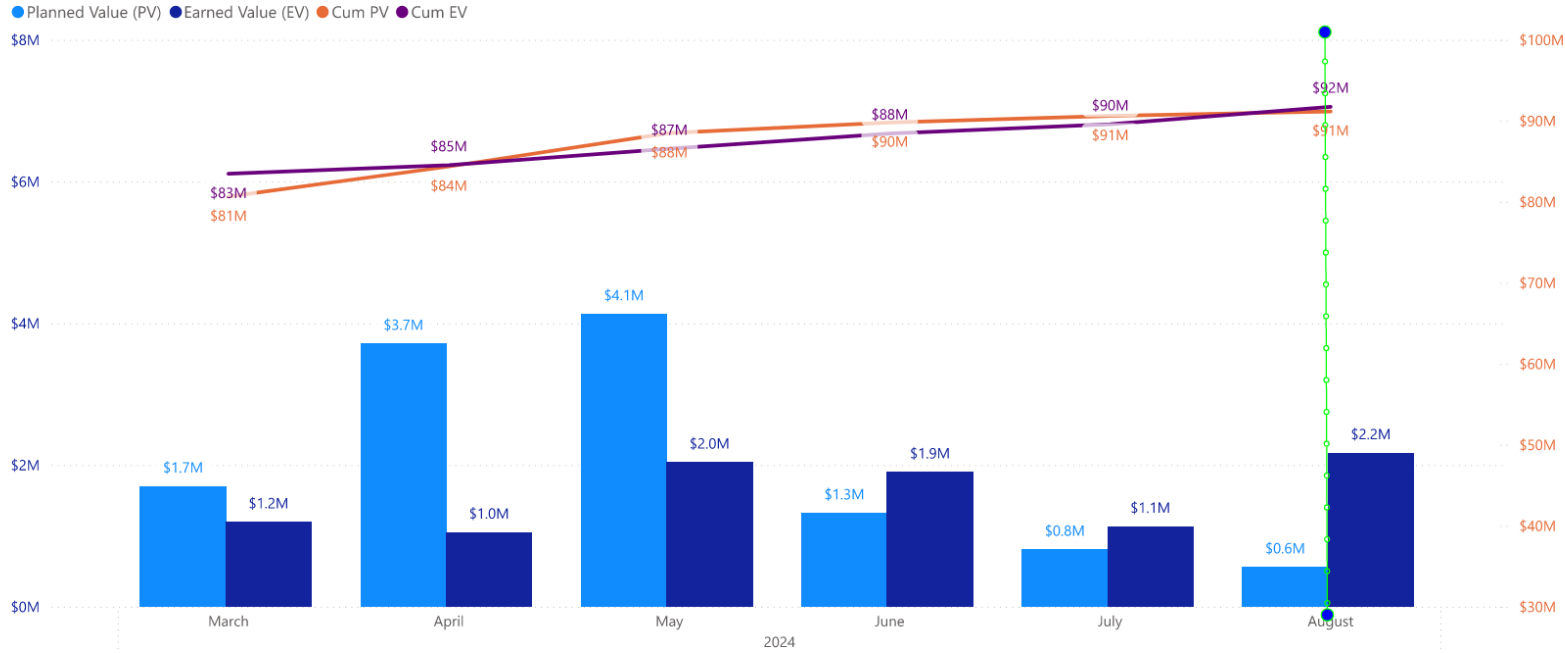
Project ID	Bid Quantity (LF)
A1-A2	12,127
B1-B2	12,384
B3	22,885
C1	2,554
C2	1,599
S3-A1	1,270
S3-A2	2,626
S3-A3	3,076
S3-A4	1,198
Total	59,719



Segments B1|B2



Segment B3



Pipe Installation – Site 5

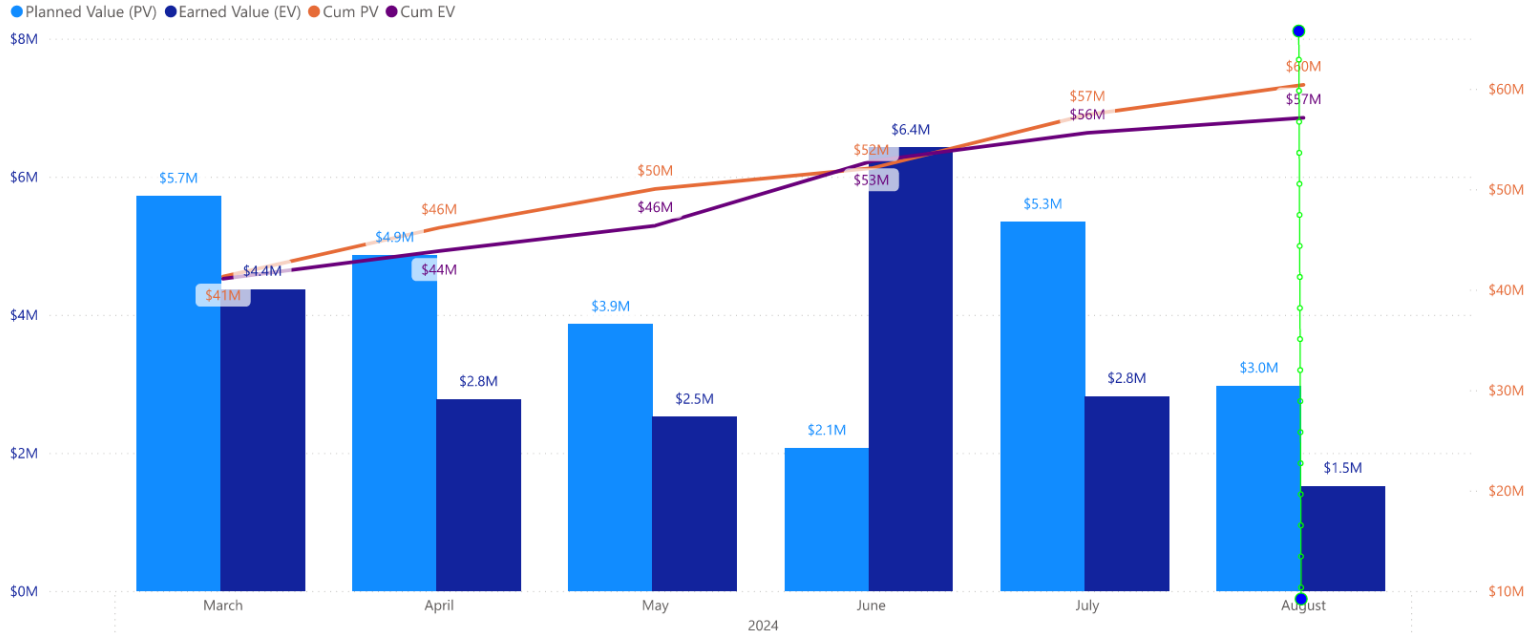


Reach 2 – Annular Grouting Testing



Site 4 – Mobilizing Tunnel Annular Grouting Operations

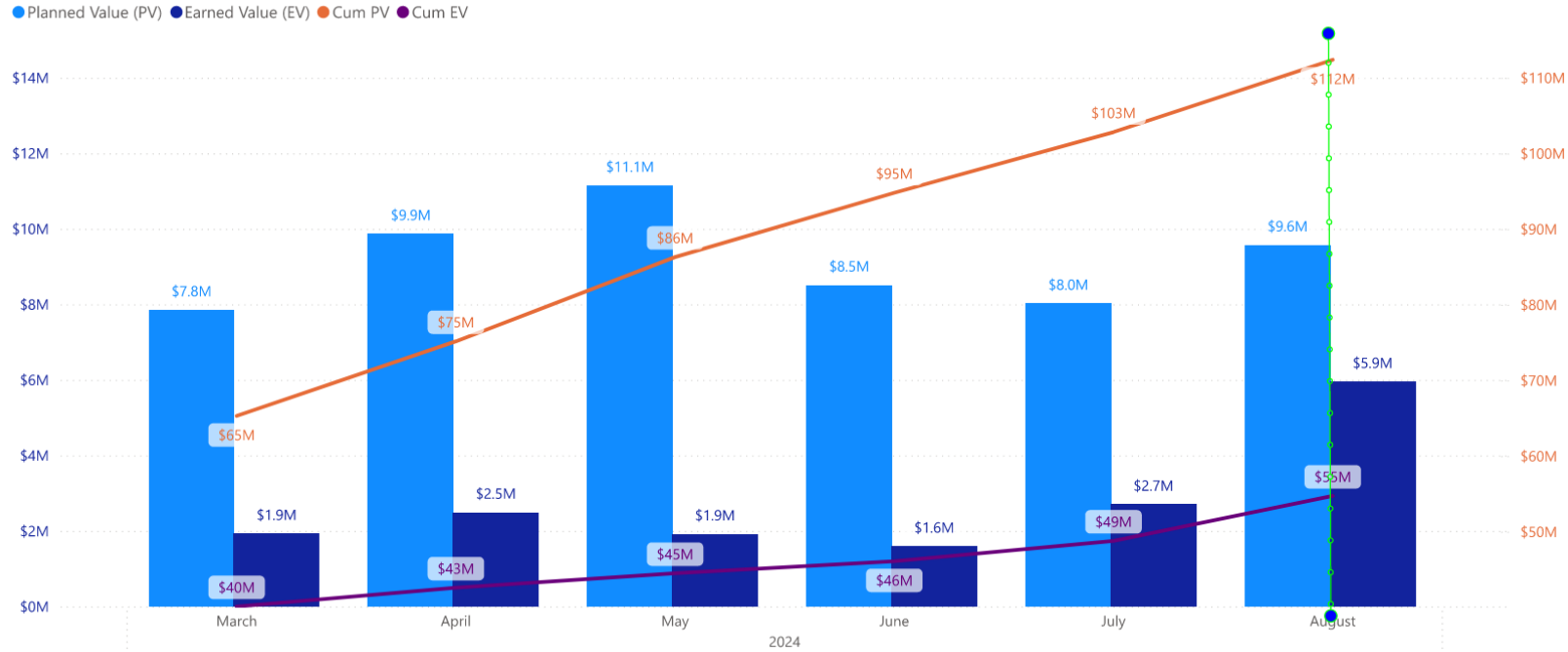
Central Pump Station



SWSP Central Pump Station



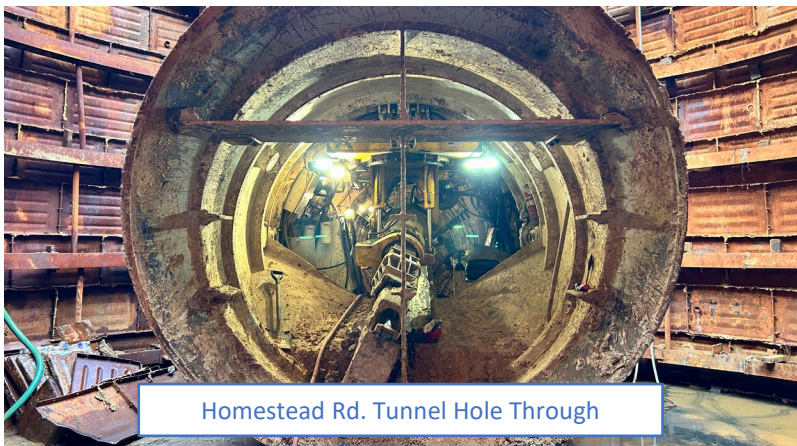
Segments A1|A2



SWSP Segment A1-A2



Little York Tunnel In Progress



Homestead Rd. Tunnel Hole Through

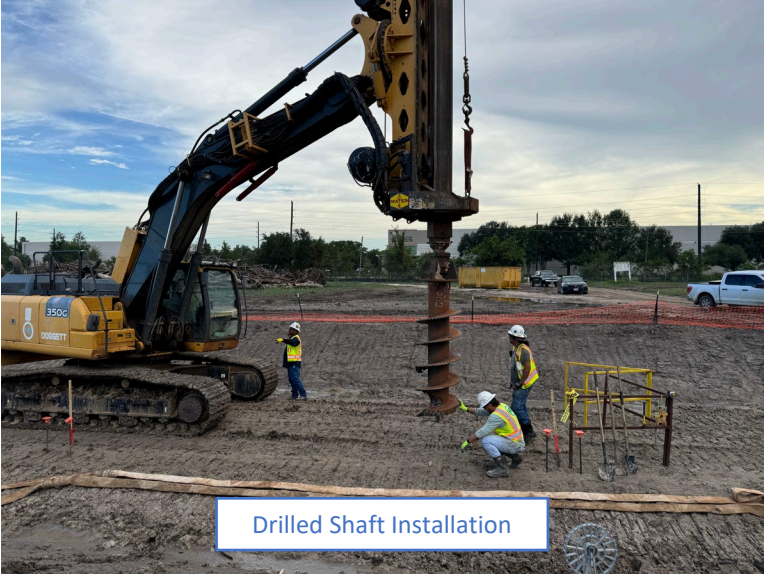


96-in WL Open Cut Installation

SWSP Repump Station



Overall Repump Site



Drilled Shaft Installation



GST Excavation



Drilled Shaft Installation