

June 2024 Monthly Construction Status Report

Updated: 7.9.2024



Segment A1/A2 – Mesa Rd. Tunnel

WHCRWA Ongoing Surface Water Supply Projects

Segment B1-B2

3 MILES OF 84-INCH DIAMETER AND 8 MILES OF 96-INCH WATERLINES FROM WEST OF BRITTMOORE ROAD TO WEST OF I-45

Segment B3

4.4 MILES OF 96-INCH DIAMETER WATER LINES FROM WEST OF I-45 TO THE SOUTH SIDE OF HOPPER RD. VIA TUNNEL

Segment 3 - A1 to Segment 3 – A3 (3 Projects)

7 MILES OF 42-INCH WATER LINE ALONG CENTERPOINT ENERGY CORRIDOR FROM NORTH OF LAKESIDE FOREST LN TO SEGMENT C

Segment C1

5 MILES OF 84-INCH, 66-INCH, AND 36-INCH WATER LINE FROM WESTFIELD VILLAGE DRIVE TO HIGHWAY 6

Segment C2

5 MILES OF 84-INCH WATER LINE FROM HIGHWAY 6 TO BRITTMOORE RD.

Central Pump Station

CONSTRUCTION OF A CENTRAL PUMP STATION THAT WILL RECEIVE WATER FROM THE RE-PUMP STATION AND THEN TRANSFER WATER TO MUDS

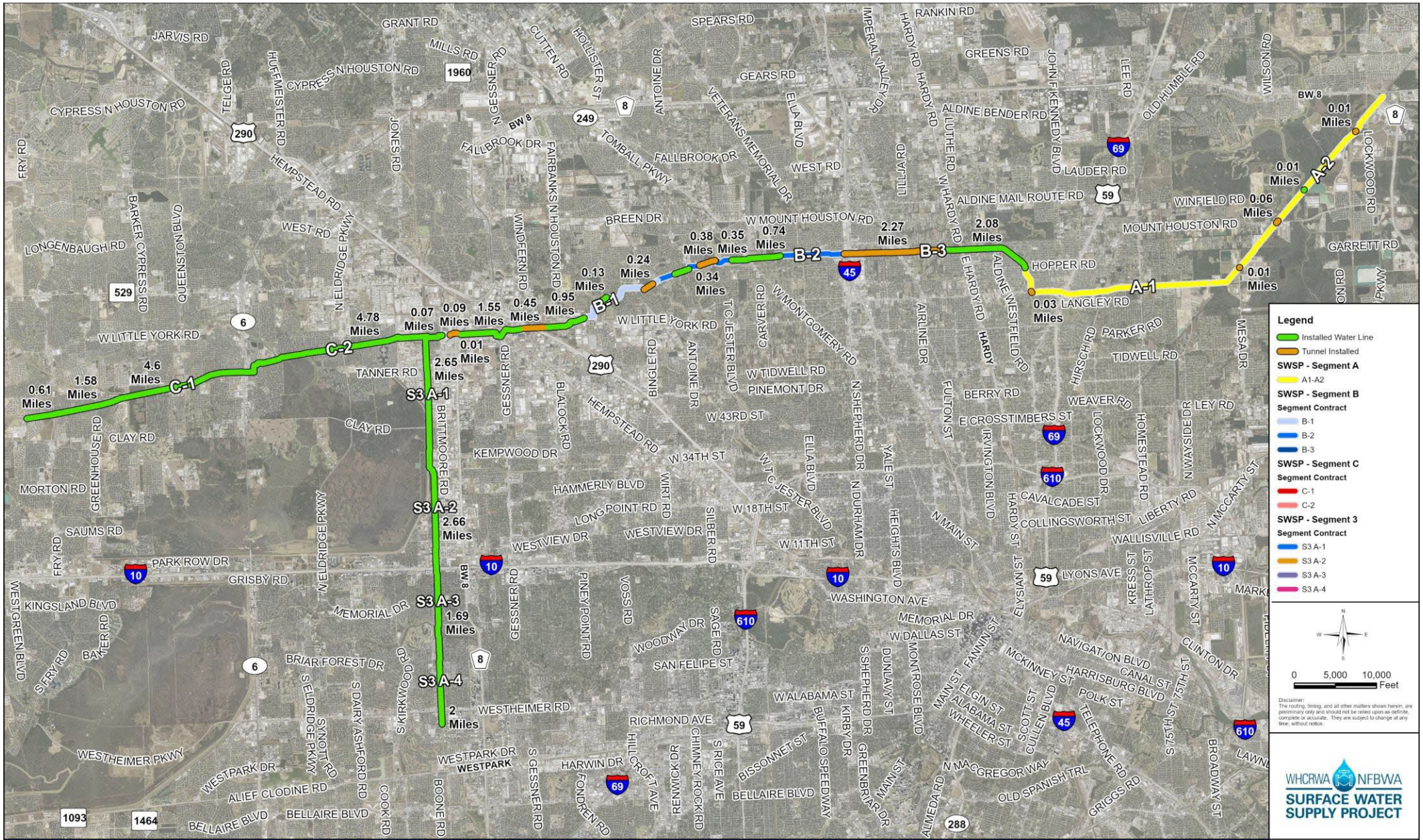
Segment A1-A2

11 MILES OF 96-INCH WATER LINE FROM HOPPER RD. TO THE WHCRWA METER STATION NEAR THE NEWPP

Repump Station

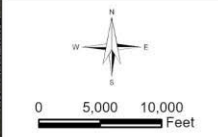
CONSTRUCTION OF A 160 MGD REPUMP STATION FACILITY INCLUDING TWO 10 MILLION GALLON TANKS

Current SWSP Construction Projects Overview



Legend

- Installed Water Line
- Tunnel Installed
- SWSP - Segment A**
- A1-A2
- SWSP - Segment B**
- Segment Contract**
- B-1
- B-2
- B-3
- SWSP - Segment C**
- Segment Contract**
- C-1
- C-2
- SWSP - Segment 3**
- Segment Contract**
- S3 A-1
- S3 A-2
- S3 A-3
- S3 A-4



Disclaimer: The routing, timing, and all other matters shown herein, are preliminary only and should not be relied upon as definite, complete or accurate. They are subject to change at any time, without notice.

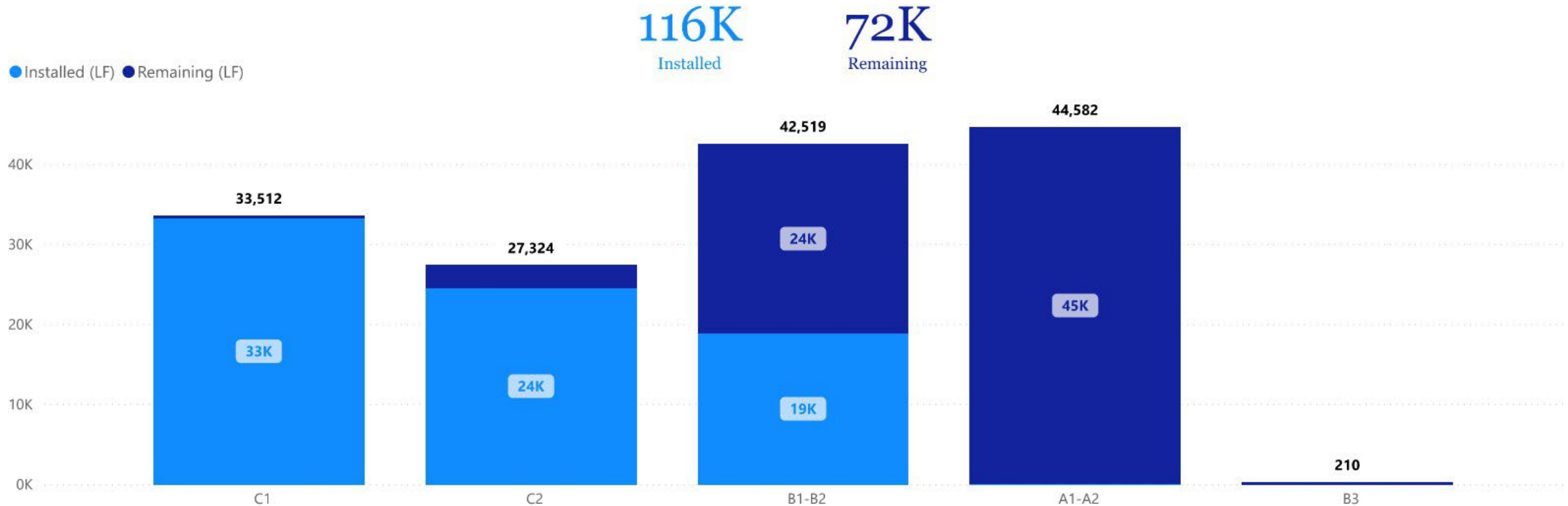




WHCRWA NFBWA
**SURFACE WATER
 SUPPLY PROJECT**

Open Cut (LF) by Project

Project ID	Bid Quantity (LF)
S3-A4	9,882
S3-A3	5,670
S3-A2	11,402
S3-A1	12,750
CPS	0
C2	27,324
C1	33,512
B3	210
B1-B2	42,519
A1-A2	44,582
Total	187,851

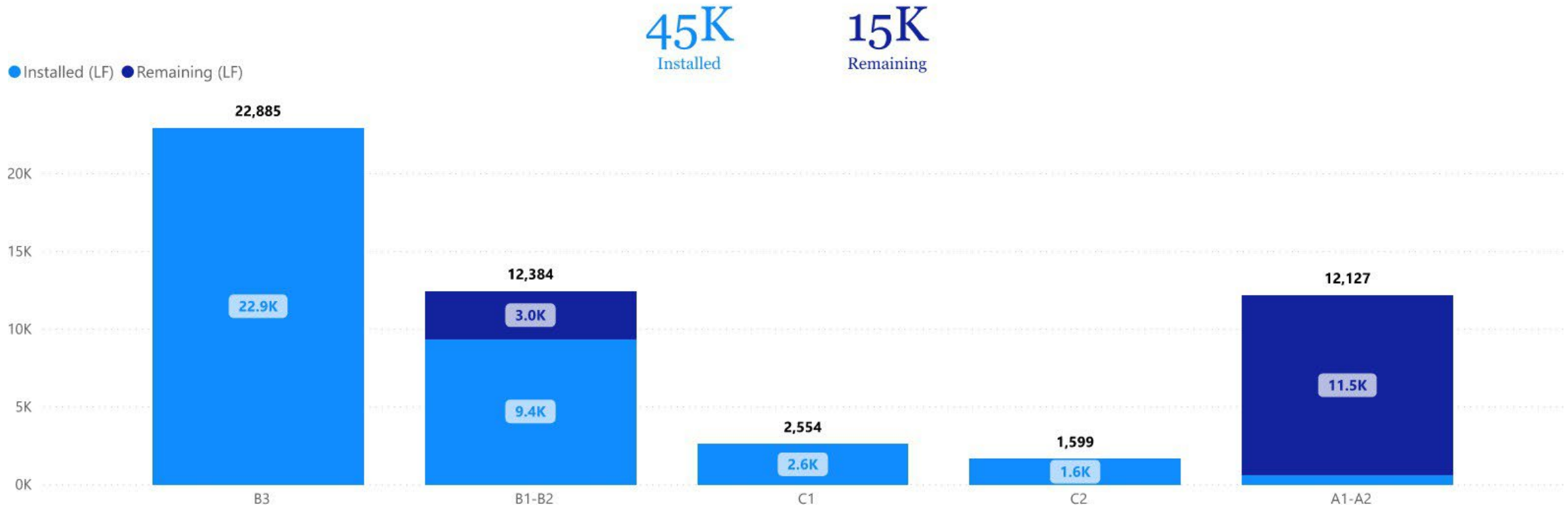




WHCRWA NFBWA
**SURFACE WATER
 SUPPLY PROJECT**

Project ID	Bid Quantity (LF)
A1-A2	12,127
B1-B2	12,384
B3	22,885
C1	2,554
C2	1,599
S3-A1	1,270
S3-A2	2,626
S3-A3	3,076
S3-A4	1,198
Total	59,719

Tunneling (LF) by Project



SWSP Segment B1-B2



Highway 290 Shaft – 84-Inch Waterline Installation



96-Inch Waterline Installation

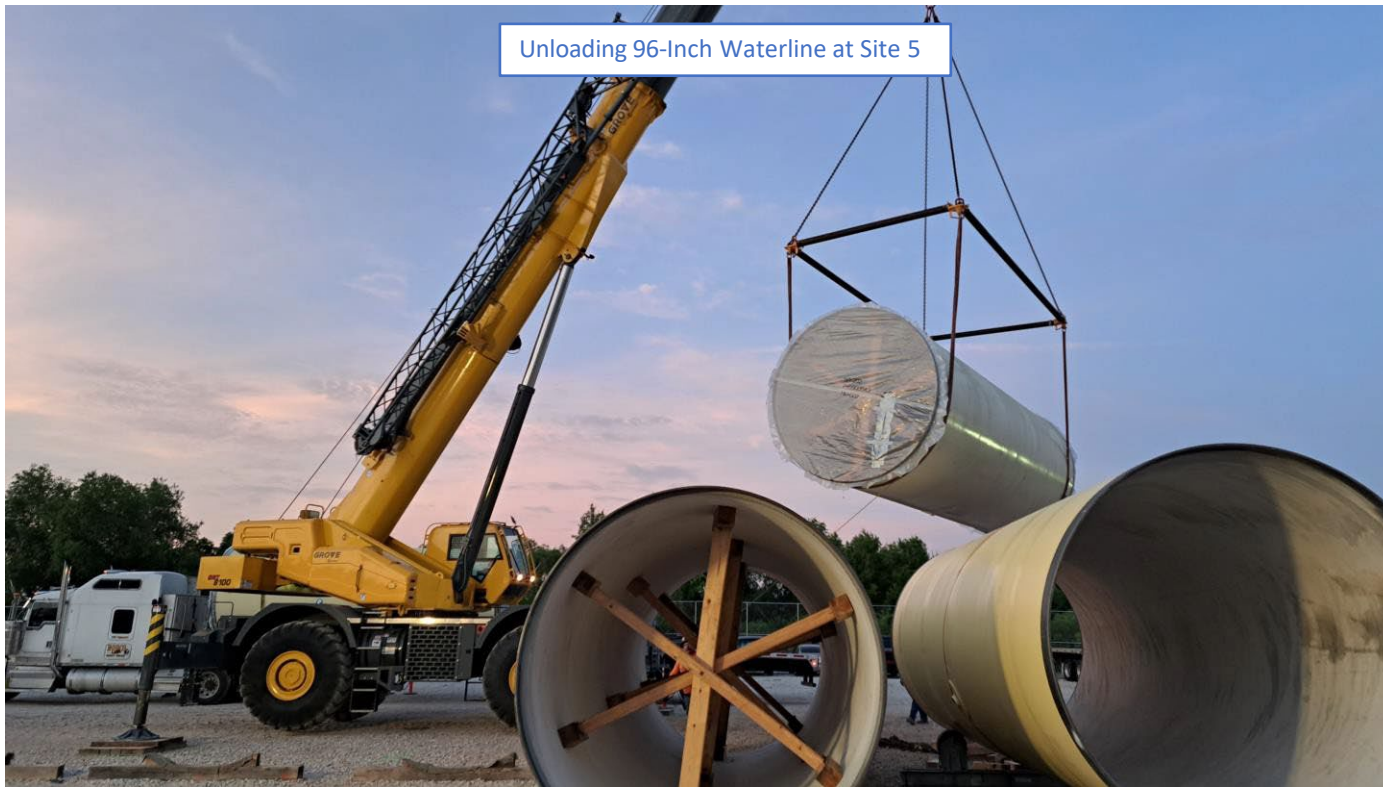


Restoring Six Flags Rd.

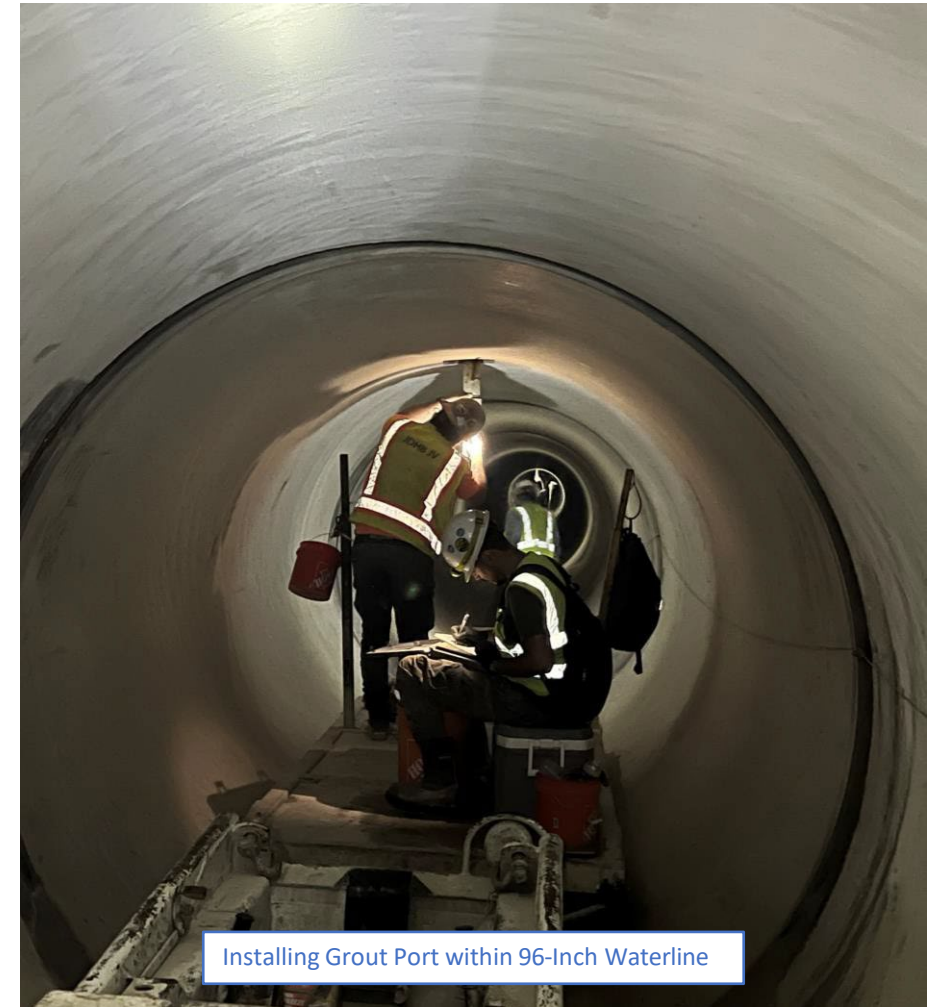


North Houston Rosslyn Tunnel

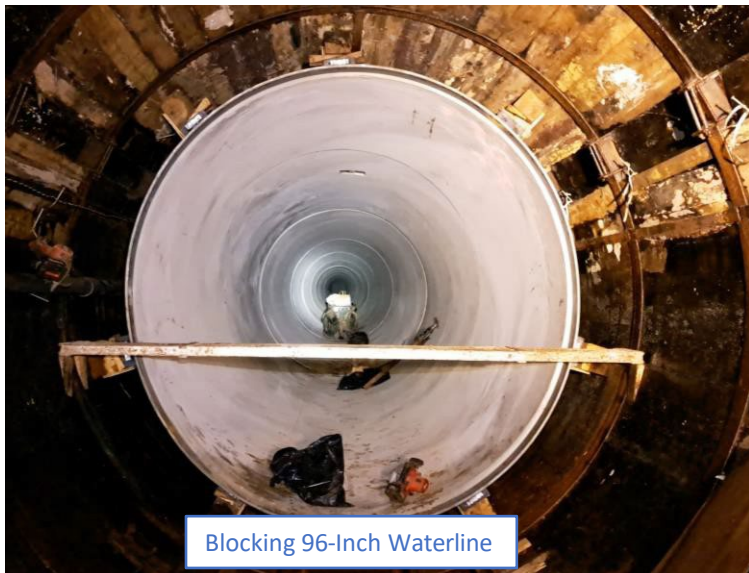
SWSP Segment B3



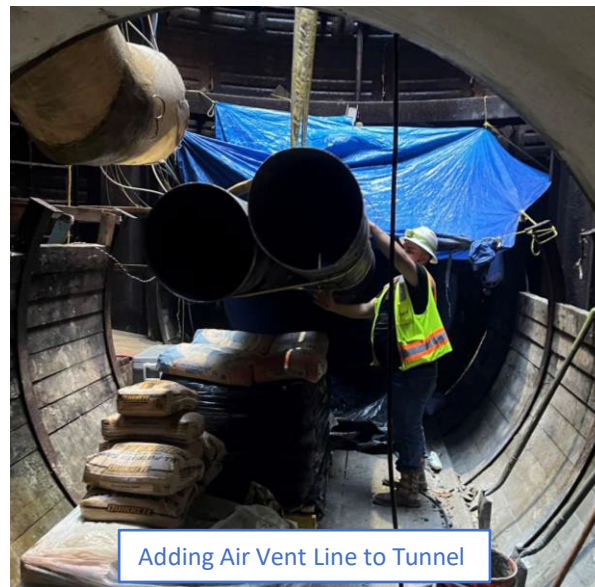
Unloading 96-Inch Waterline at Site 5



Installing Grout Port within 96-Inch Waterline



Blocking 96-Inch Waterline



Adding Air Vent Line to Tunnel

SWSP Segment C1



Restoration near Central Pump Station



East Side of Bear Creek 84-Inch Waterline within Shaft



Sod Installation near Joyce Blvd.



West Side of Bear Creek within Shaft

SWSP Central Pump Station



CPS Site – July 3rd, 2024



High Service Pump Station



Driveway Installation to Mountain Forest Dr.



CPS Discharge Waterline Installation

SWSP Segment A1-A2



Placing Tunnel Machine within Homestead Rd. Shaft



Lockwood Drive – Launch Shaft Excavation Beginning



Installation of 96-IN WL Near Little York and UPRR



Little York Launch Shaft Portal Complete