

# May 2024 Monthly Construction Status Report

*Updated: 06.07.24*



Central Pump Station – June 2024

## WHCRWA Ongoing Surface Water Supply Projects

### Segment B1-B2

3 MILES OF 84-INCH DIAMETER AND 8 MILES OF 96-INCH WATERLINES FROM WEST OF BRITTMOORE ROAD TO WEST OF I-45

### Segment B3

4.4 MILES OF 96-INCH DIAMETER WATER LINES FROM WEST OF I-45 TO THE SOUTH SIDE OF HOPPER RD. VIA TUNNEL

### Segment 3 - A1 to Segment 3 – A3 (3 Projects)

7 MILES OF 42-INCH WATER LINE ALONG CENTERPOINT ENERGY CORRIDOR FROM NORTH OF LAKESIDE FOREST LN TO SEGMENT C

### Segment C1

5 MILES OF 84-INCH, 66-INCH, AND 36-INCH WATER LINE FROM WESTFIELD VILLAGE DRIVE TO HIGHWAY 6

### Segment C2

5 MILES OF 84-INCH WATER LINE FROM HIGHWAY 6 TO BRITTMOORE RD.

### Central Pump Station

CONSTRUCTION OF A CENTRAL PUMP STATION THAT WILL RECEIVE WATER FROM THE RE-PUMP STATION AND THEN TRANSFER WATER TO MUDS

### Segment A1-A2

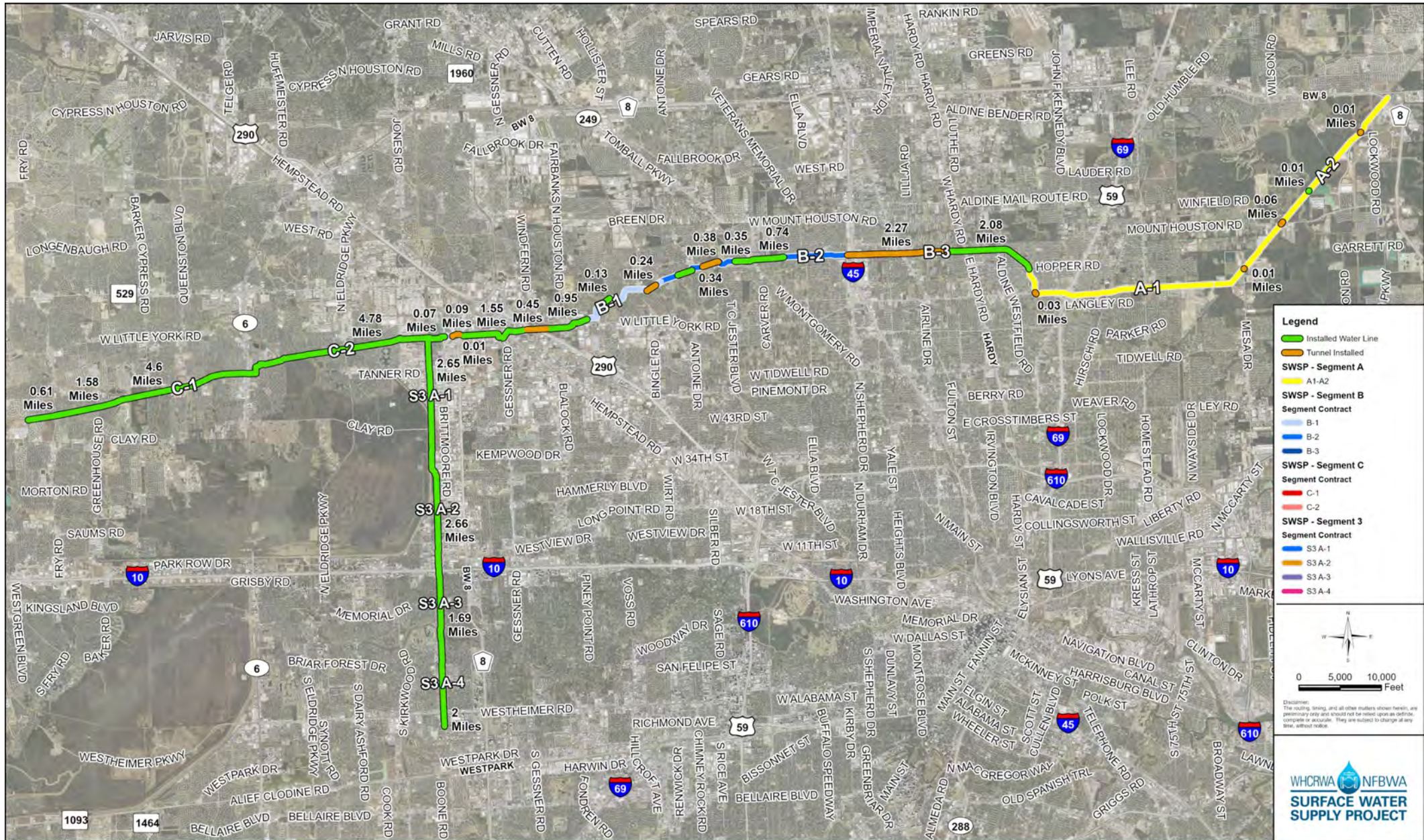
11 MILES OF 96-INCH WATER LINE FROM HOPPER RD. TO THE WHCRWA METER STATION NEAR THE NEWPP

### Repump Station

CONSTRUCTION OF A 160 MGD REPUMP STATION FACILITY INCLUDING TWO 10 MILLION GALLON TANKS



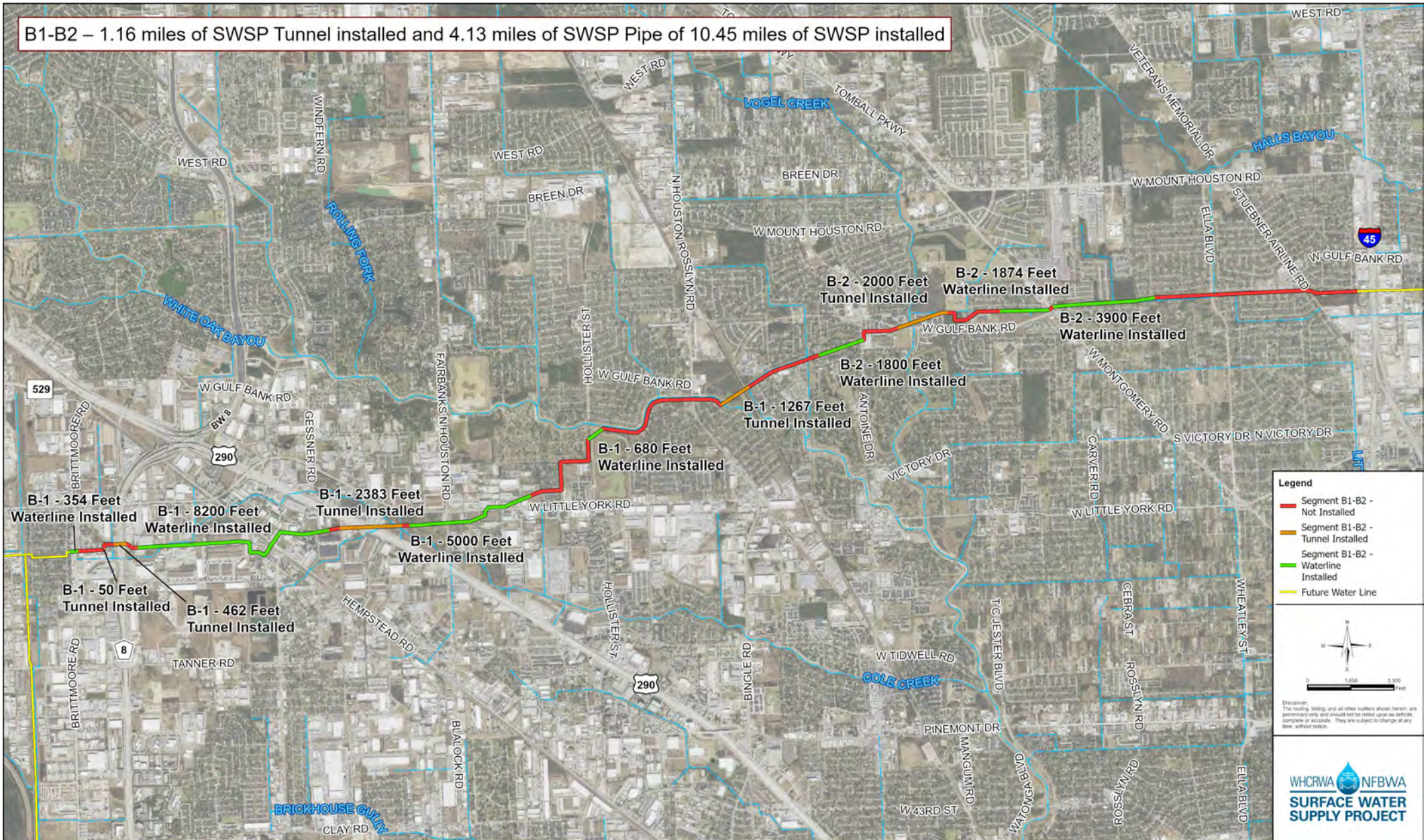
# Current SWSP Construction Projects Overview





# Construction Progress – Segment B1-B2

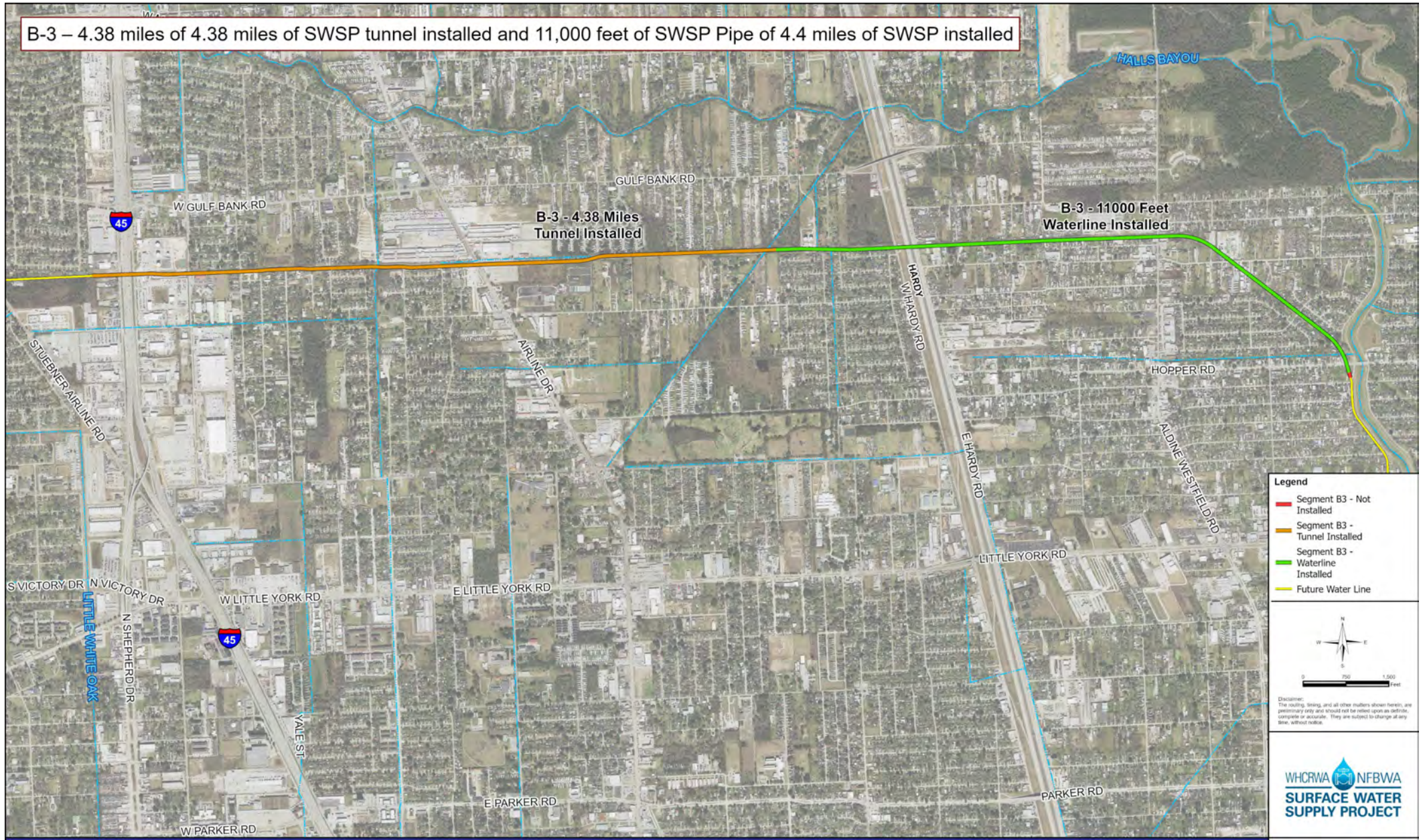
B1-B2 – 1.16 miles of SWSP Tunnel installed and 4.13 miles of SWSP Pipe of 10.45 miles of SWSP installed





# Construction Progress – Segment B3

B-3 – 4.38 miles of 4.38 miles of SWSP tunnel installed and 11,000 feet of SWSP Pipe of 4.4 miles of SWSP installed



**Legend**

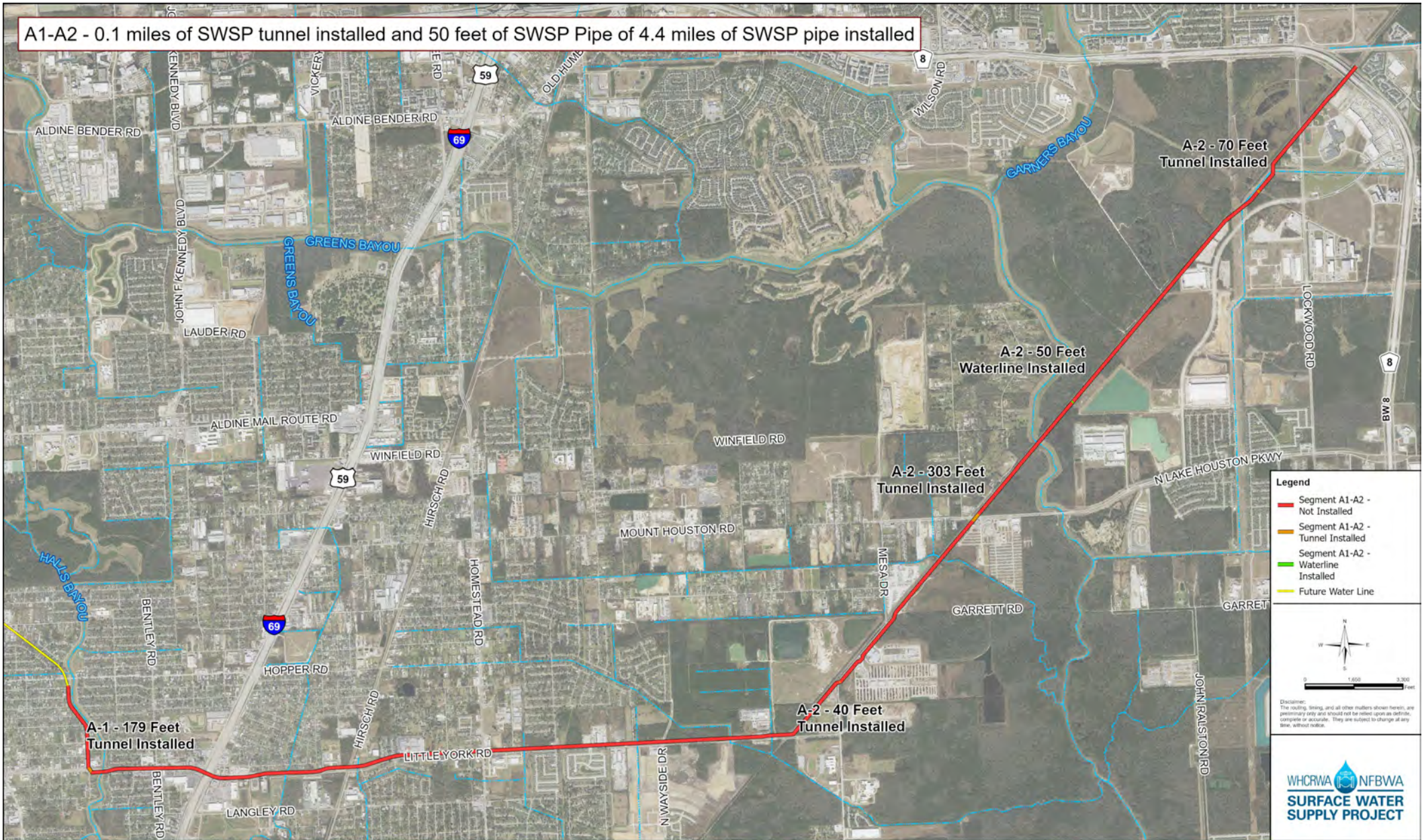
- Segment B3 - Not Installed
- Segment B3 - Tunnel Installed
- Segment B3 - Waterline Installed
- Future Water Line

Disclaimer: The routing, timing, and all other matters shown herein, are preliminary only and should not be relied upon as definite, complete or accurate. They are subject to change at any time, without notice.





# Construction Progress – Segment A1-A2



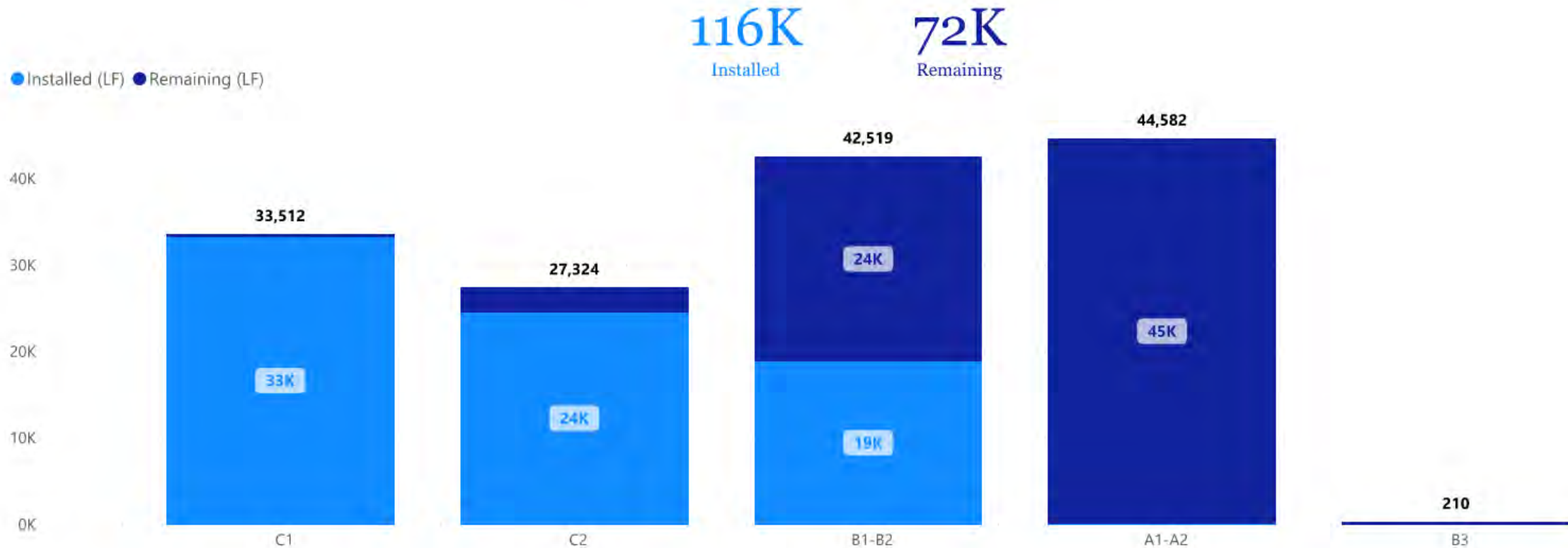




WHCRWA NFBWA  
**SURFACE WATER  
 SUPPLY PROJECT**

## Open Cut (LF) by Project

Project ID	Bid Quantity (LF)
S3-A4	9,882
S3-A3	5,670
S3-A2	11,402
S3-A1	12,750
CPS	0
C2	27,324
C1	33,512
B3	210
B1-B2	42,519
A1-A2	44,582
<b>Total</b>	<b>187,851</b>

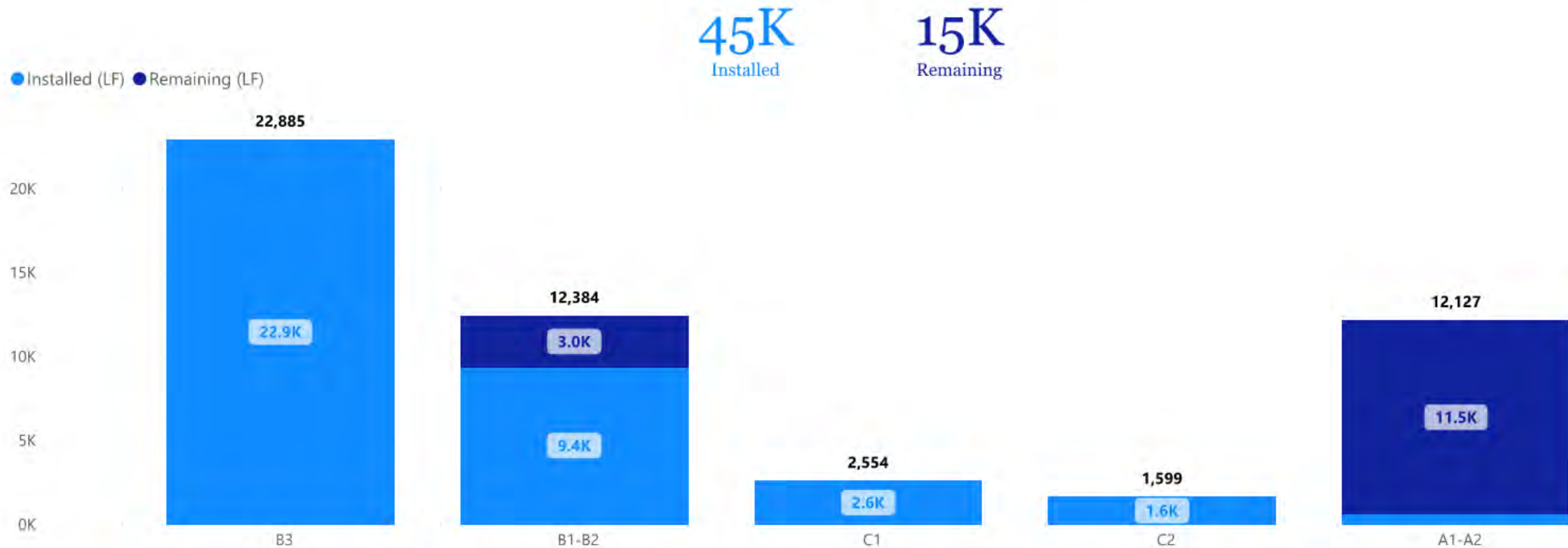


WHCRWA  NFBWA

# SURFACE WATER SUPPLY PROJECT

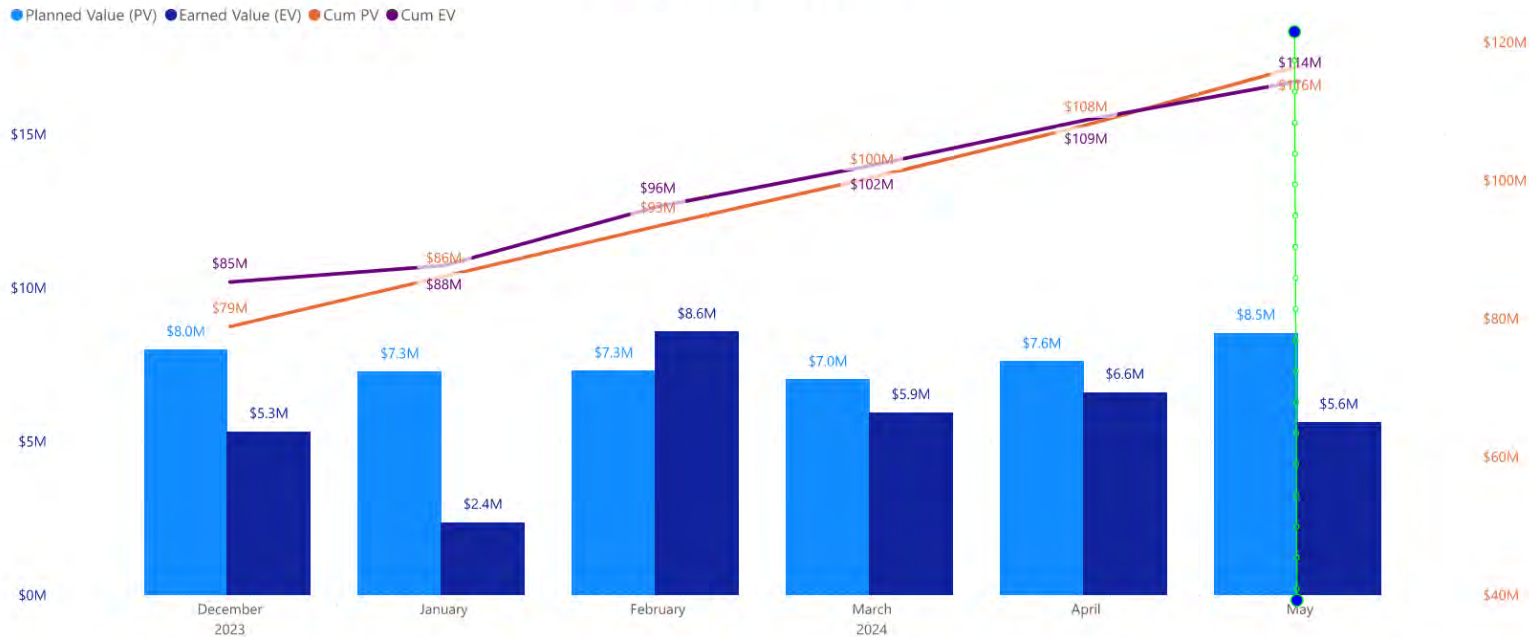
## Tunneling (LF) by Project

Project ID	Bid Quantity (LF)
A1-A2	12,127
B1-B2	12,384
B3	22,885
C1	2,554
C2	1,599
S3-A1	1,270
S3-A2	2,626
S3-A3	3,076
S3-A4	1,198
<b>Total</b>	<b>59,719</b>





### Segments B1|B2



# SWSP Segment B1-B2



Recording GPS location on 96-IN Pipe East of Ella Blvd.



Restoring Guhn Rd. After 96-IN Open Cut Completion



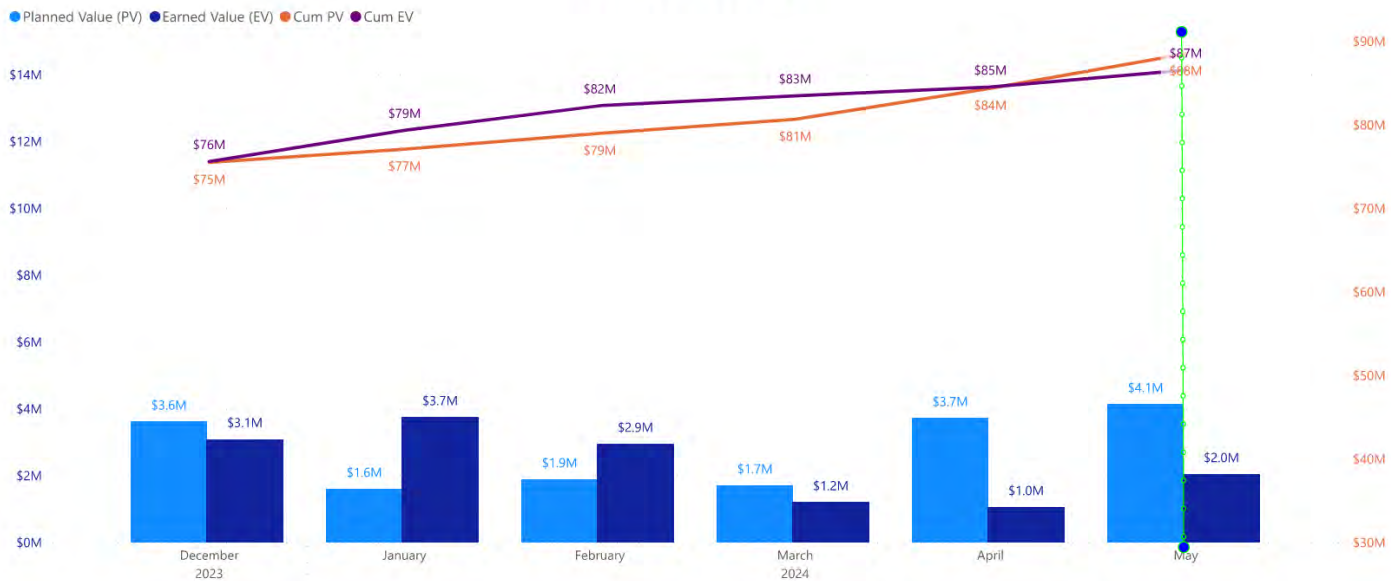
Lowering Pipe to Continue Threading 290 Tunnel



Project Name  
Segment B3  
12/25/2023 5/25/2024



### Segment B3



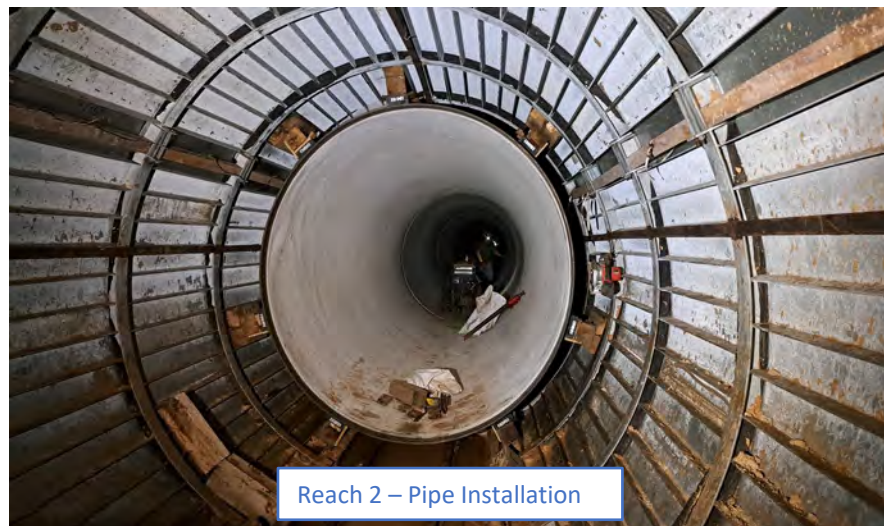
# SWSP Segment B3



Site 2 – Annular Backfill Batch Plant and Deliveries



Site 5 – Holiday Testing Pipe



Reach 2 – Pipe Installation



Project Name

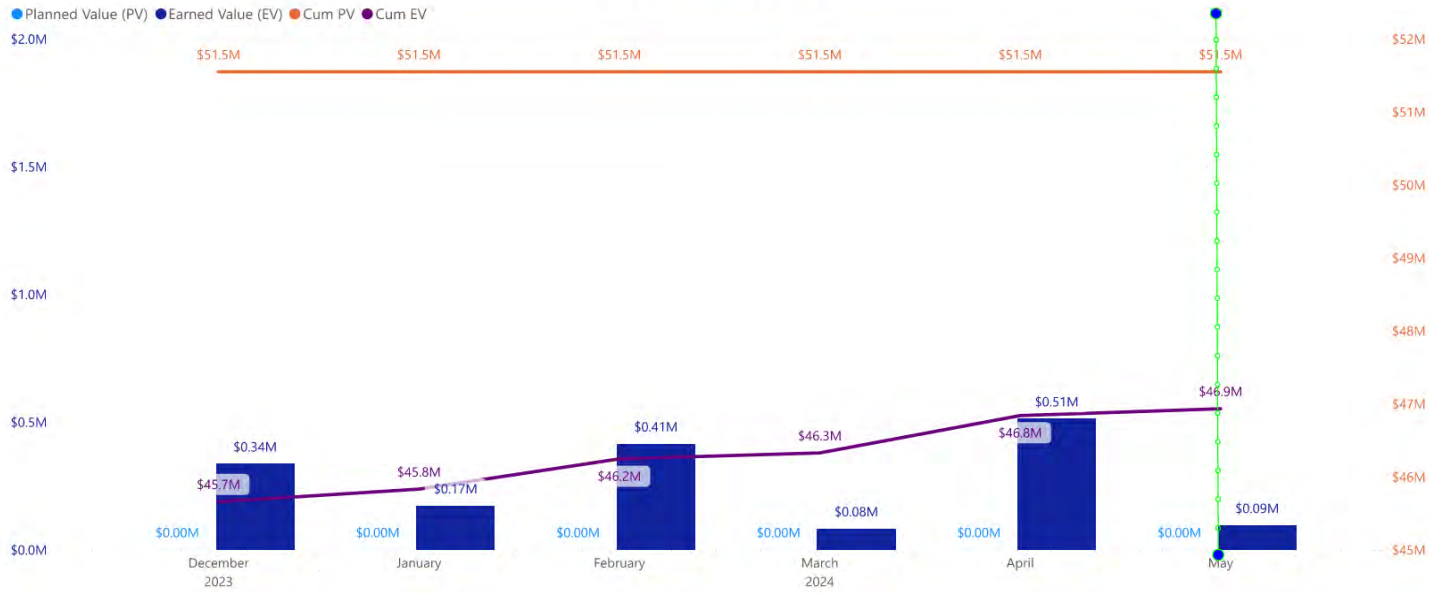
Segment C1

12/25/2023 5/25/2024



### Segment C1

# SWSP Segment C1



Vent Pipe Installation



Butterfly Valve Vault Fencing at Hwy 6

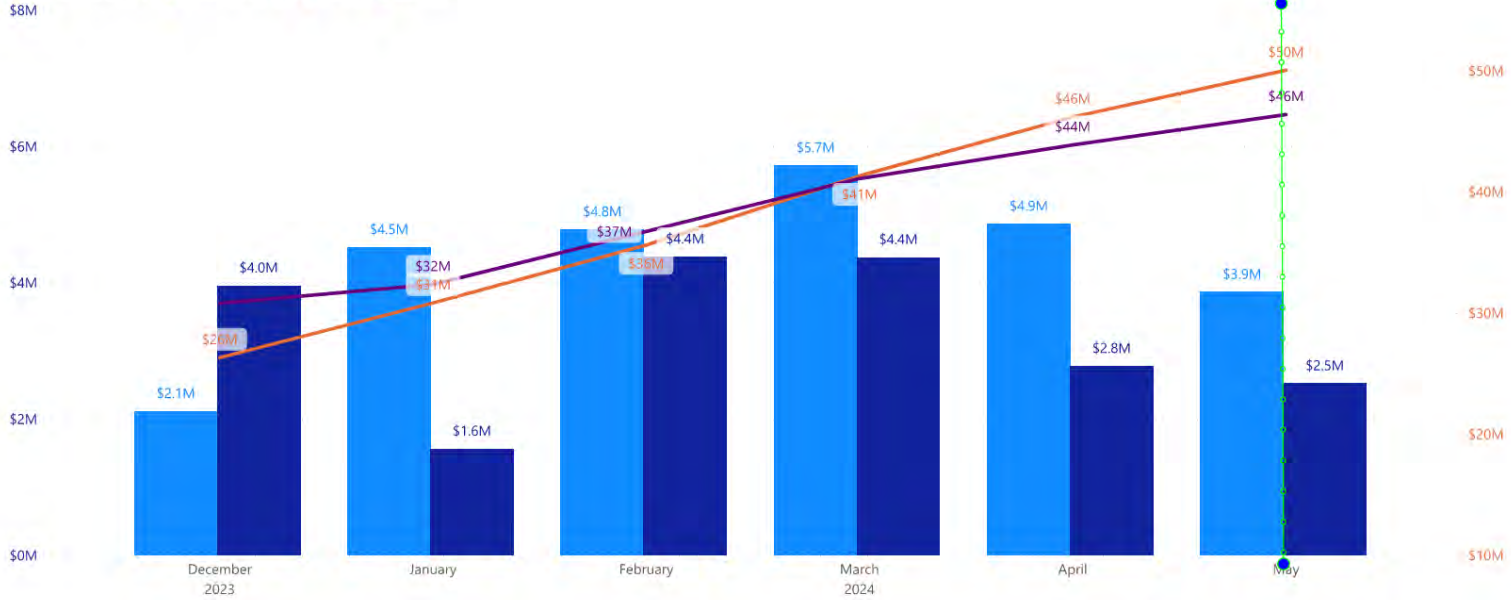
Install BFV Fencing Mow Strip





## Central Pump Station

● Planned Value (PV) ● Earned Value (EV) ● Cum PV ● Cum EV



# SWSP Central Pump Station



GSTs



Operation Building and HSPPS



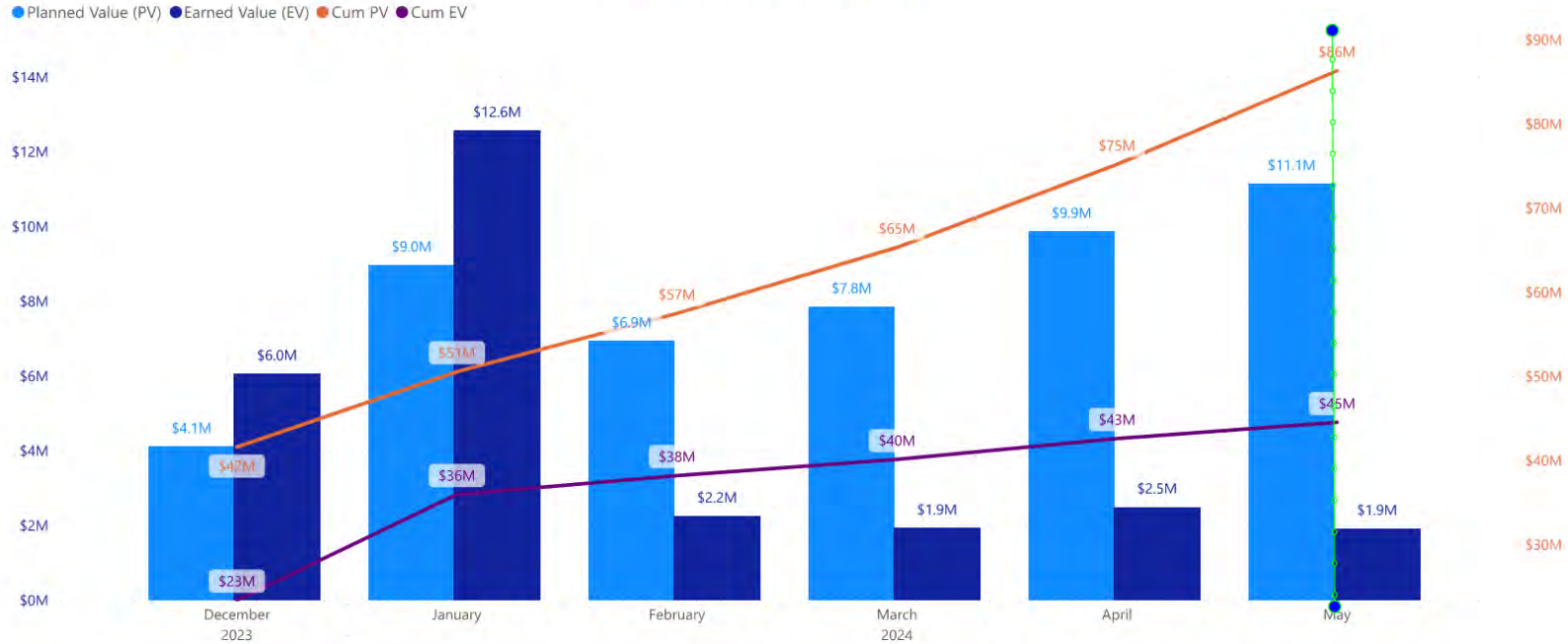
Chem Building



Overall Site



### Segments A1|A2



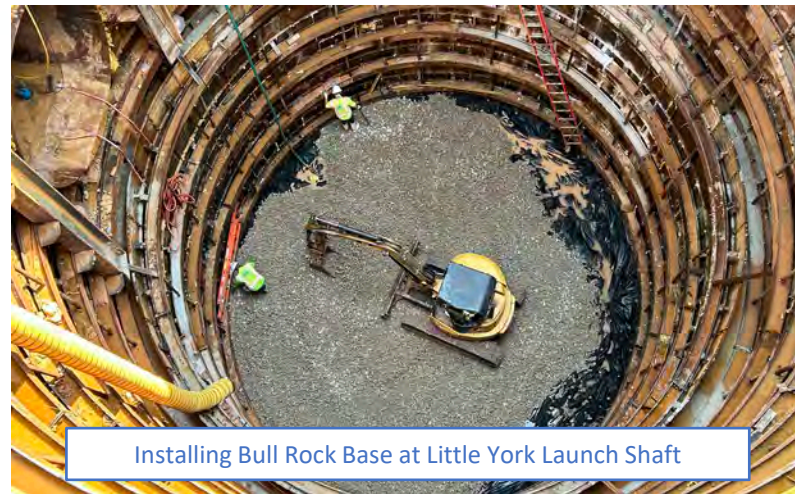
# SWSP Segment A1-A2



Mesa Dr. Tunnel Liner Installation



Installation of 96-IN WL Near Little York and UPRR



Installing Bull Rock Base at Little York Launch Shaft