

SURFACE WATER SUPPLY PROJECT

Spring 2024



Central Pump Station - March 2024

SurfaceWaterSupplyProject.com

The Surface Water Supply Project

To meet the Harris-Galveston Subsidence District (HGSD) and Fort Bend Subsidence District's (FBSD) groundwater reduction requirements for 2025 and beyond, the West Harris County Regional Water Authority (WHCRWA) has partnered with the North Fort Bend Water Authority (NFBWA) to construct the Surface Water Supply Project (SWSP). The Surface Water Supply Project is needed to reduce our dependence on groundwater and to reduce land subsidence by conserving the water in our aquifers. Land subsidence is the sinking of the land surface. Pumping large amounts of groundwater causes the ground to settle and lowering the elevation of the land. This project will help to reduce land subsidence and will meet the water needs of a rapidly growing population.

Once complete, surface water from Lake Houston will be supplied to retail water providers such as Municipal Utility Districts (MUDs), Public Utility Districts (PUDs), and Water Control and Improvement District (WCIDs). These transmission pipelines will vary in diameter from 42 inches to 96 inches, depending on the pipeline segment.

Construction Update

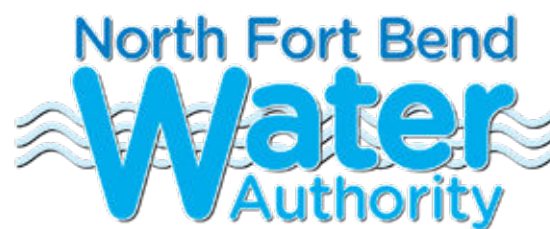
Project construction began in 2020 and is being completed in multiple segments which are a key part of our 2025 conversion program.

The construction for each segment will aim to minimize impacts to any given area for extensive amounts of time. As construction moves along the project alignment, residents, business owners, and anyone traveling in the vicinity of the pipeline alignment may experience detours, access issues, and other construction activities associated with large-scale linear projects. To minimize these impacts, much of the pipeline will be installed within existing pipeline corridors. Public safety, ease of access, and well-marked detour information will be a priority throughout the delivery of the project.

Project team members are committed to communicating proactively with your community. For more information about construction in your area, please visit www.surfacewatersupplyproject.com/construction.



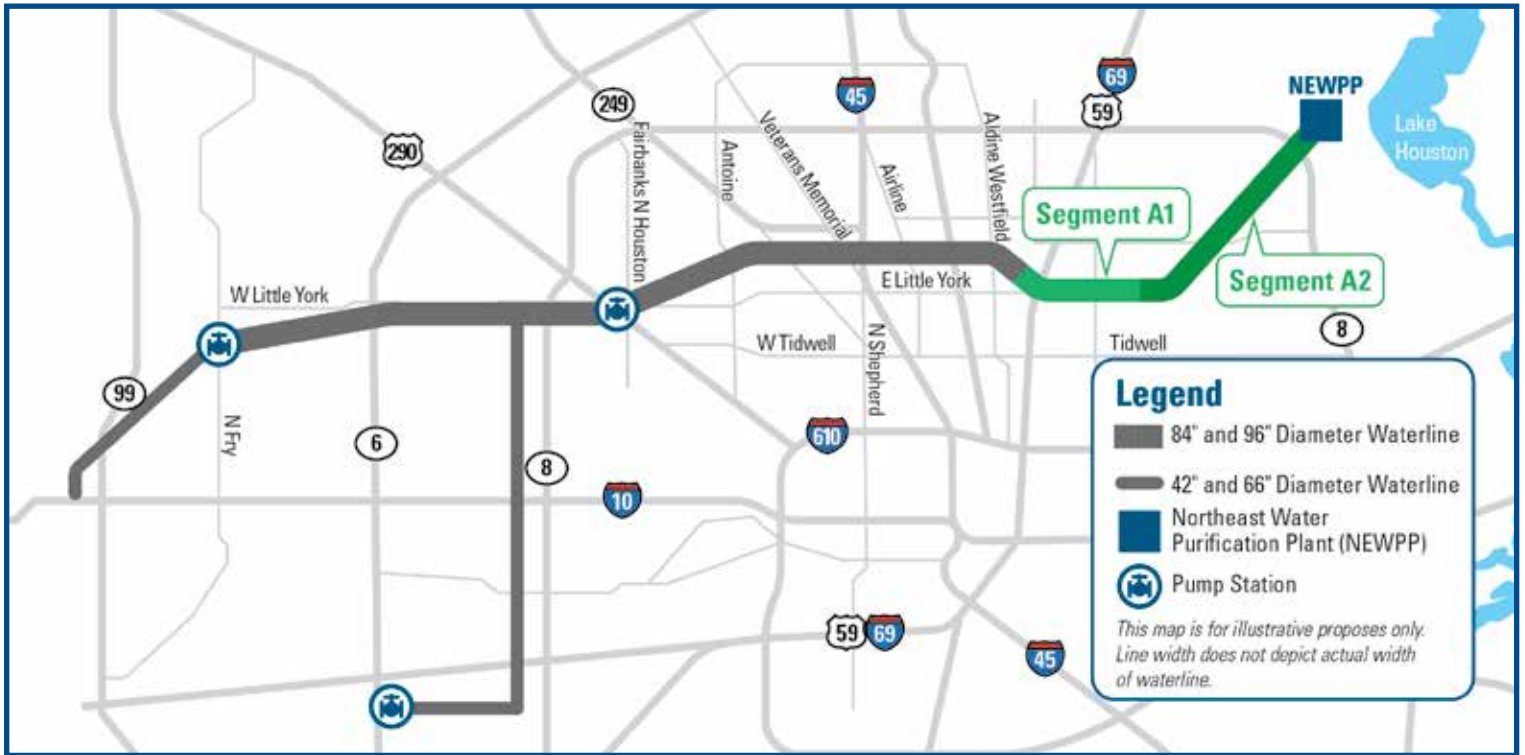
www.whcrwa.com



www.nfbwa.com

Segment A

Construction of Segment A1-A2 began in the Fall of 2023.



A1-A2 - Excavation of Homestead Rd. Receiving Shaft (March 2024).



A1-A2 - Lowering Steel Casing for Shady Ln. Tunnel (March 2024).



A1-A2 - Storage of 96-IN Waterline Pipe (March 2024).

Segment B

Segment B is divided into three segments: Segment B1, B2, and B3. All three Segments are currently under construction.



B1-B2 - Beltway 8 Connecting MTBM Utilities (March 2024).



B1-B2 - Compacting Backfill on 96-IN Pipe East of Ella Blvd. (March 2024).



B1-B2 - Lowering Pipe to Thread 290 Tunnel (March 2024).



B3 – Cathodic Protection Installation (March 2024).



B3 – Reach 2 Tunnel Cleaning (March 2024).



B3 - Reach 4 – TBM Retrieval (March 2024).

Segment 3

Segment 3 is divided in six segments (A1 – A5 & B1). Segments S3-A1, S3-A2, S3-A3, and Segment S3-A4 are complete with some restoration along the project area. Segments S3-A5, S3-B1 are obtaining environmental clearance before finalizing design.



Segment C

Segment C is divided into two segments, C1 and C2, for construction. Construction of these segments began in early 2021, and both are near completion, with ongoing restoration through the segment.



C1 - Bear Creek Waterline Installed (March 2024).



C1 - Installing Bear Creek Waterline 2.0 (March 2024).



C1 - Installing Bear Creek Waterline (March 2024).



C2 - BFV Internal Restoration Complete (March 2024).



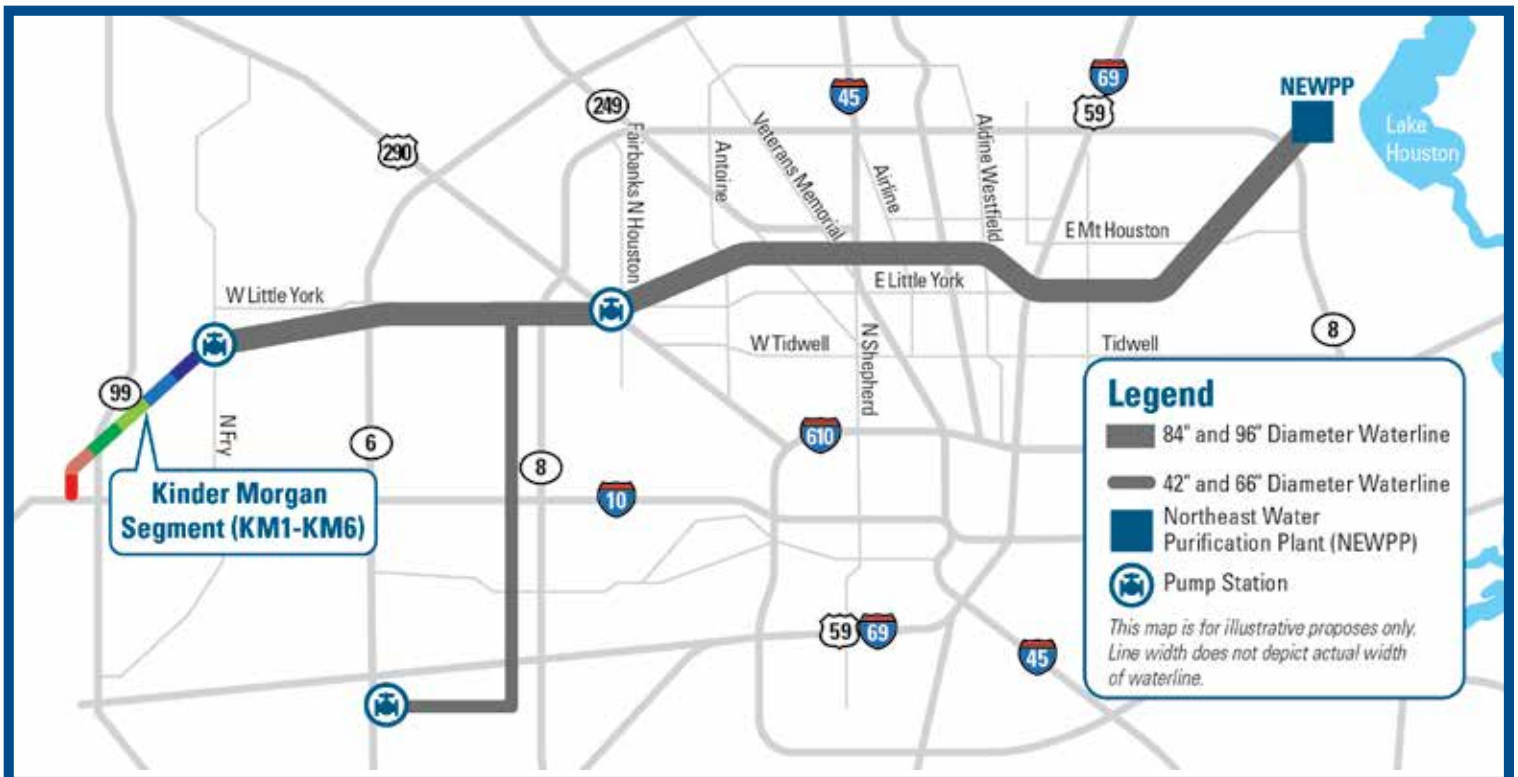
C2 - Coring ARV Outlet Piping (March 2024).



C2 - Framing and Rebar Installation at Manholes (March 2024).

Kinder Morgan (KM)

The Kinder Morgan segment is a 66-inch welded steel water line running along a Kinder Morgan pipeline corridor. The project was divided into six segments (KM1 – KM6) for construction. Construction of the Kinder Morgan Segments (KM-1 – KM-6), which are west of Fry Road to I-10 / Grand Parkway, will commence and be completed as a part of the 2025 conversion program.



Central Pump Station

The Central Pump Station is one of two pump stations in the SWSP. The Central Pump Station has been awarded and is currently under construction.



Central Pump Station (March 2024).



CPS - Overall Site (March 2024).



CPS - Operations Building Slab (March 2024).



CPS - GST 1 Wall Panel Erection (March 2024).



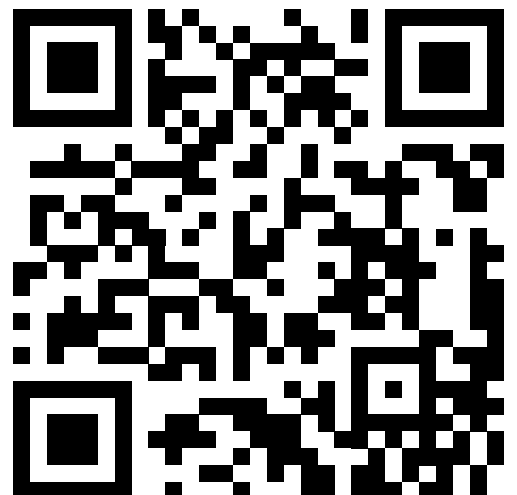
Rendering of the WHCRWA Central Pump Station

Repump Station

Construction of the Re-Pump Station started in the spring of 2024.

All schedule information included in this newsletter is subject to change, pending design, coordination, and contracting timeframes.

The SWSP Team provides multiple opportunities for you to receive information about the project. If you have questions about the SWSP call the hotline at 1-844-638-SWSP (7977) for updates or email the team at info@surfacewatersupplyproject.com.

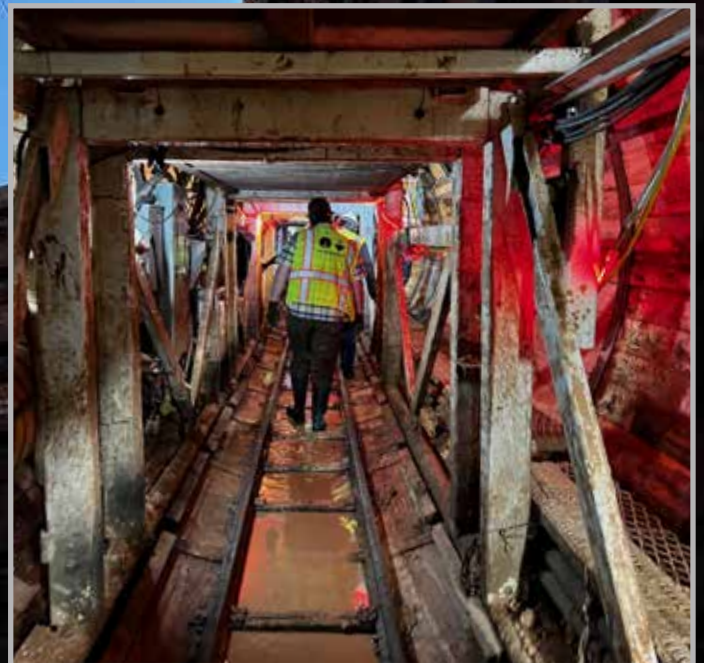


SWSP Segment B3 Tour

On January 30, 2024 the SWSP Project Team attended a tour of the Segment B3 126-inch tunnel between IH-45 North Fwy and Hopper Road. This tour provided the team with an opportunity to gain valuable insights into its construction, functionality and ask the construction team questions.



Pictured (left to right): Chase Juhl, Tonya Kenneda, Eric Hansen, Yovani Zelaya, Larry Wepler, Wayne Ahrens, Melinda Silva, Gary Struzick.



For more information about the SWSP give us a call at 1-844-638-SWSP (7977) or email us at info@surfacewatersupplyproject.com!

SWSP in the Community

On February 18, 2024 the WHCRWA Project Team attended the Windsong HOA Meeting to present information about the WHCRWA water rates. The WHCRWA Team shared the latest WHCRWA video to provide the public general information about the WHCRWA and then provided the “why” behind the WHCRWA water rates, followed by a Q&A session.





Do you have questions about the ongoing SWSP construction or the WHCRWA water rates? If you would like for the SWSP Project Team to make a presentation to your local organization (either in-person or virtually), give us a call at 1-844-638-SWSP (7977) or email us at info@surfacewatersupplyproject.com!

Scan the QR below or visit <https://whcrwa.net/spotlight> to watch the latest WHCRWA video.



Two Types of Construction

There are two types of waterline construction utilized on the Surface Water Supply Project, open cut and tunneling.

Open cut



Open-cut construction involves excavating a trench from the surface, completing work within the trench, and then backfilling to restore the surface to pre-construction conditions.

Tunneling



Tunneling involves excavating and installing the pipeline through an underground tunnel, while leaving the surface comparably undisturbed.

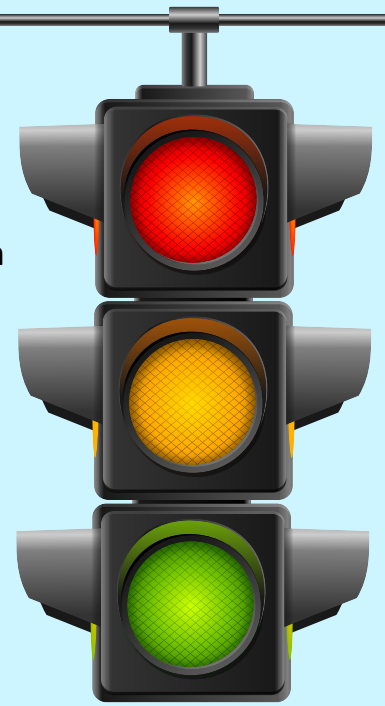
Traffic Impacts

During construction, communities may notice road closures or traffic impacts associated with the ongoing construction of the Surface Water Supply Project. The WHCRWA is committed to ensuring that construction impacts are minimized whenever possible. For updated road and lane closure information and other related resources, please visit our website dedicated to traffic updates:

www.surfacewatersupplyproject.com/traffic

Project Safety

Safety is a key consideration for the Surface Water Supply Project Team, as contractors will be required to maintain safe job sites with regular facility and property inspections along the corridor. As necessary, contractors will be required to repair damaged roadways impacted by construction. Access to churches, schools, businesses, and other properties will be maintained throughout construction. SWSP Program Managers will coordinate with these entities and local emergency services in advance to determine any necessary road closures, identify and proactively communicate appropriate detours, and phase construction to minimize disruptions.



Funding for the Surface Water Supply Project

This project is funded through bonds issued by the WHCRWA and the NFBWA. A significant portion of these bonds were sold to the Texas Water Development Board (TWDB) through a state-wide program for financing water projects. The total project costs are estimated to be more than \$1 billion, and this project is funded solely by the water authorities. The water authorities' interest payments and repayment of principal on the bonds will be supported by each water authority's sale of surface water to their customers and pumpage fees charged on well water pumped within the water authorities. No residents outside of the water authorities' groundwater reduction plans will pay for the Surface Water Supply Project.



FAQ

Frequently Asked Questions

How was the alignment chosen for the Surface Water Supply Project (SWSP)?

The WHCRWA negotiated with the City of Houston to purchase additional surface water. The agreement between the City and the WHCRWA stipulates that the water must originate at the City of Houston Northeast Water Purification Plant, thereby excluding other regional surface water sources. To deliver the water from the required source, the WHCRWA took great care to choose a route that considers area residents, businesses, and existing infrastructure. The WHCRWA spent years researching and refining the route and worked with elected officials to choose the most cost-effective alignment with the least impacts to the community as a whole.

How long will construction take in my area?

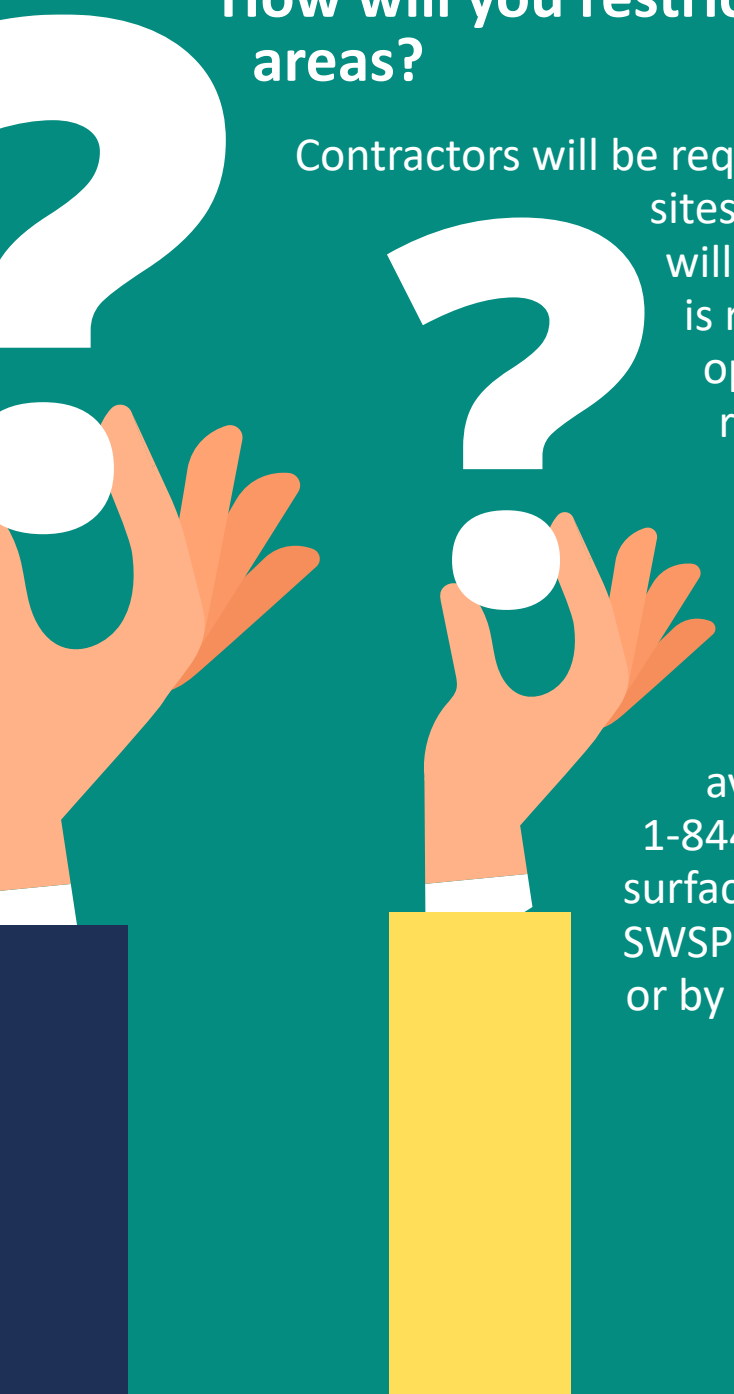
Although construction of the project started in 2020 and will be built over several years, no specific area is expected to be impacted for the entire period. For updates regarding construction schedules, please visit www.surfacewatersupplyproject.com/construction.



Are there any delays or detours expected during construction?

During construction, residents, business owners, and anyone traveling in the vicinity of the project alignment may experience detours, access issues, and other construction activities associated with large-scale linear projects. To minimize these impacts, the majority of the pipeline will be installed within existing pipeline corridors. The public's safety, ease of access, and well-marked detour information will be the priority throughout the life of the project. The WHCRWA is committed to communicating proactively and continuously with the public about this project.

How will you restrict access to the construction areas?

An illustration on the left side of the page shows two hands, one orange and one yellow, each holding a large white question mark. The hands are positioned as if presenting the question marks to the text.

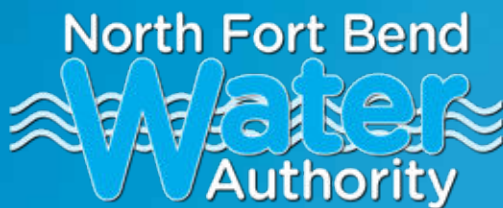
Contractors will be required to maintain safe and secure job sites, meaning that access to construction sites will be restricted. In areas where tunneling is required, the tunnel shafts must remain open; however, construction fencing will restrict access to the area surrounding tunnel shafts.

Who do I contact if I have questions about the project?

More information about the SWSP is available by calling our toll-free hotline at 1-844-638-SWSP (7977), by emailing info@surfacewatersupplyproject.com, by visiting the SWSP website surfacewatersupplyproject.com or by scanning the QR code.



Follow our progress as we continue to ensure reliable, long-term water supplies for west Harris County and north Fort Bend County residents.



www.SurfaceWaterSupplyProject.com