

April 2024 Monthly Construction Status Report

Updated: 05.06.24



WHCRWA Ongoing Surface Water Supply Projects

Segment B1-B2

3 MILES OF 84-INCH DIAMETER AND 8 MILES OF 96-INCH WATERLINES FROM WEST OF BRITTMOORE ROAD TO WEST OF I-45

Segment B3

4.4 MILES OF 96-INCH DIAMETER WATER LINES FROM WEST OF I-45 TO THE SOUTH SIDE OF HOPPER RD. VIA TUNNEL

Segment 3 - A1 to Segment 3 – A3 (3 Projects)

7 MILES OF 42-INCH WATER LINE ALONG CENTERPOINT ENERGY CORRIDOR FROM NORTH OF LAKESIDE FOREST LN TO SEGMENT C

Segment C1

5 MILES OF 84-INCH, 66-INCH, AND 36-INCH WATER LINE FROM WESTFIELD VILLAGE DRIVE TO HIGHWAY 6

Segment C2

5 MILES OF 84-INCH WATER LINE FROM HIGHWAY 6 TO BRITTMOORE RD.

Central Pump Station

CONSTRUCTION OF A CENTRAL PUMP STATION THAT WILL RECEIVE WATER FROM THE RE-PUMP STATION AND THEN TRANSFER WATER TO MUDS

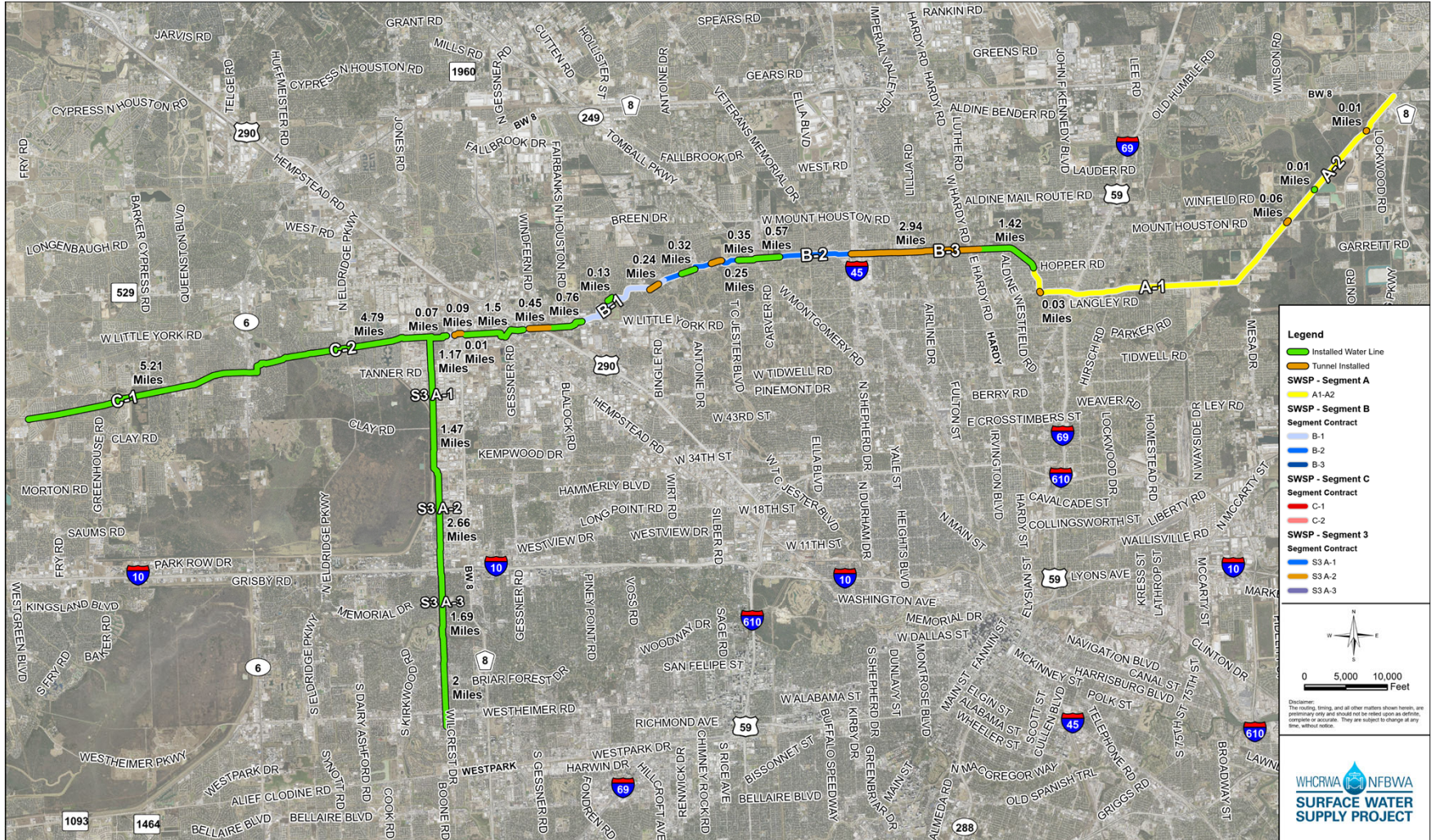
Segment A1-A2

11 MILES OF 96-INCH WATER LINE FROM HOPPER RD. TO THE WHCRWA METER STATION NEAR THE NEWPP

Repump Station

CONSTRUCTION OF A 160 MGD REPUMP STATION FACILITY INCLUDING TWO 10 MILLION GALLON TANKS

Current SWSP Construction Projects Overview



Legend

- Installed Water Line
- Tunnel Installed
- SWSP - Segment A
- SWSP - Segment B
- SWSP - Segment C
- SWSP - Segment 3

Segment Contract

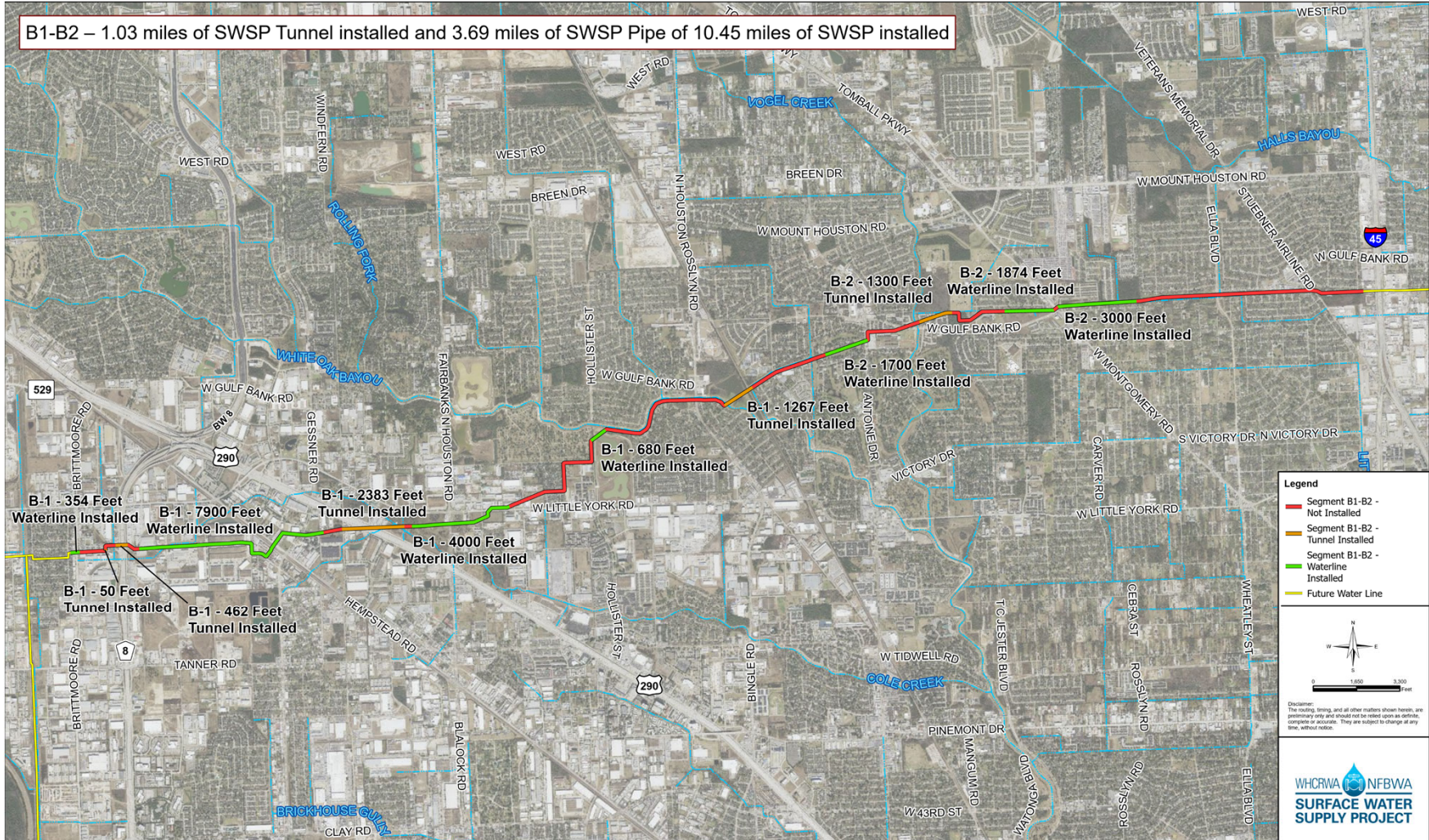
- B-1
- B-2
- B-3
- C-1
- C-2
- S3 A-1
- S3 A-2
- S3 A-3

0 5,000 10,000 Feet

Disclaimer: The existing, being, and all other matters shown herein, are preliminary only and should not be relied upon as definite, complete or accurate. They are subject to change at any time, without notice.



Construction Progress – Segment B1-B2



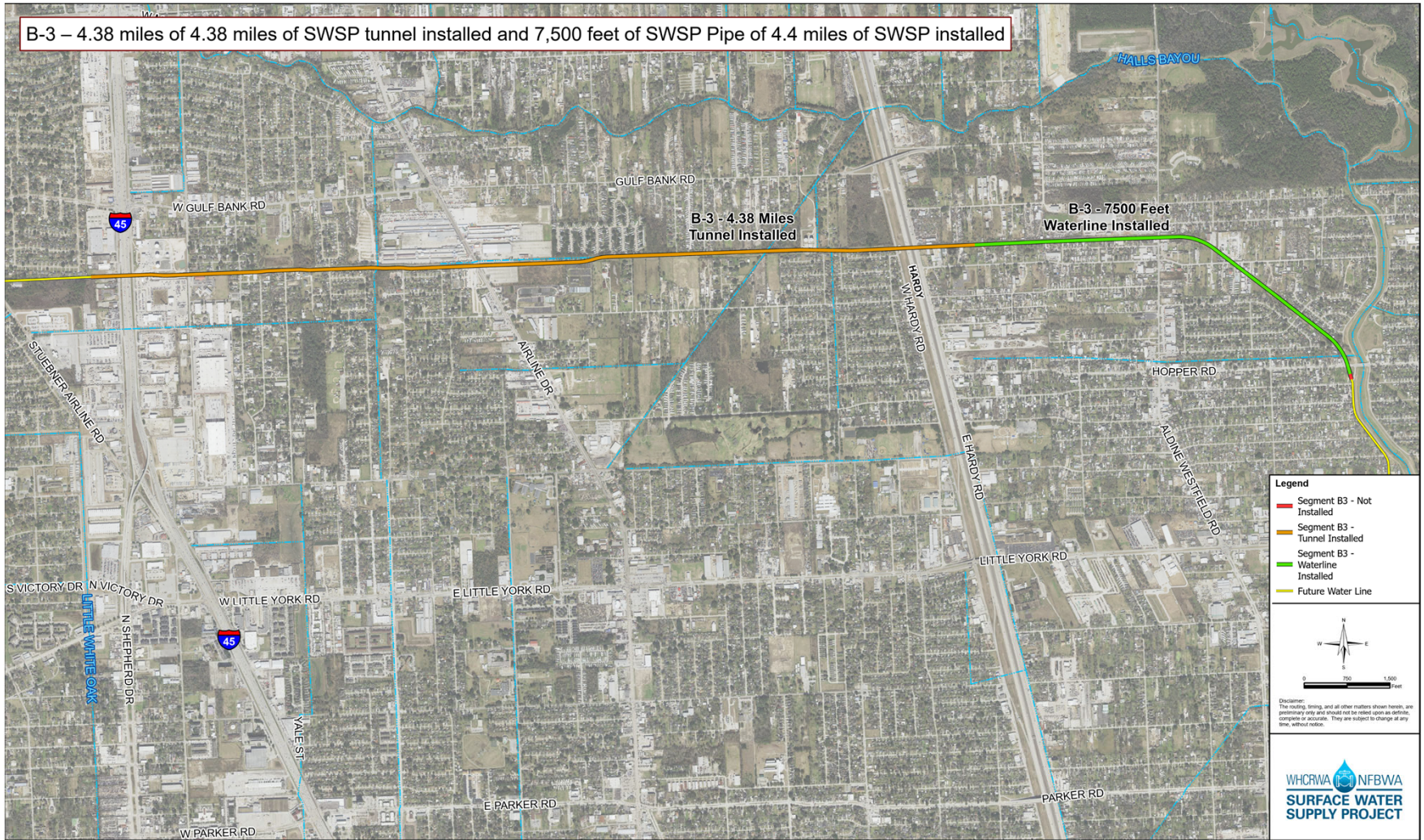
SWSP Contract Segment B1-B2 - Construction Progress

DEC | ENGINEERING EXCELLENCE

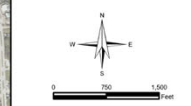
Date: May 2024 Page 1 of 1

Construction Progress – Segment B3

B-3 – 4.38 miles of 4.38 miles of SWSP tunnel installed and 7,500 feet of SWSP Pipe of 4.4 miles of SWSP installed



- Legend**
- Segment B3 - Not Installed
 - Segment B3 - Tunnel Installed
 - Segment B3 - Waterline Installed
 - Future Water Line



Disclaimer:
The routing, timing, and all other matters shown herein, are preliminary only and should not be relied upon as definite, complete or accurate. They are subject to change at any time, without notice.

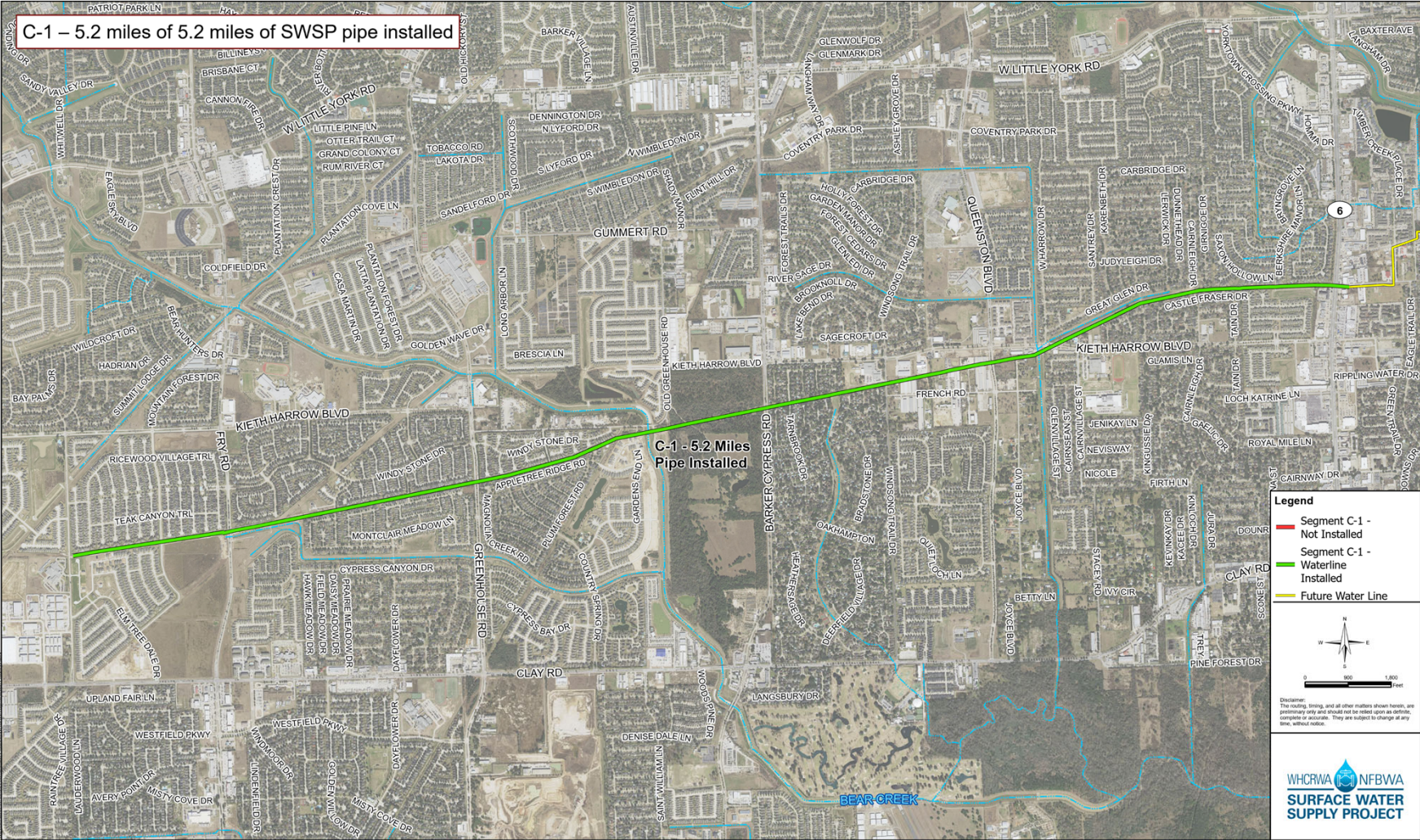


DEC | ENGINEERING EXCELLENCE

Date: May 2024 Page 1 of 1

SWSP Contract Segment B-3 - Construction Progress

Construction Progress – Segment C1

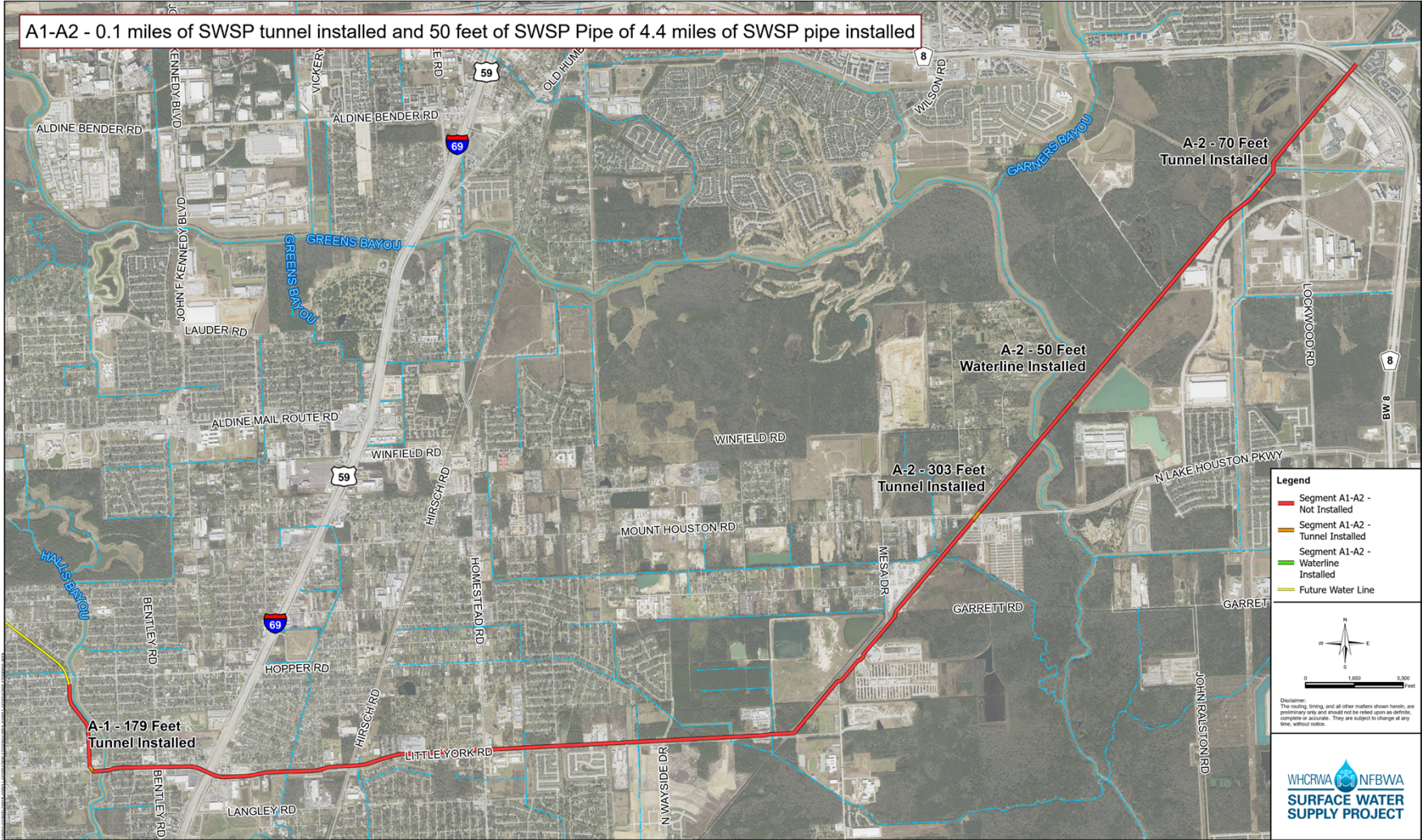


SWSP Contract Segment C-1 - Construction Progress

Construction Progress – Segment C2



Construction Progress – Segment A1-A2

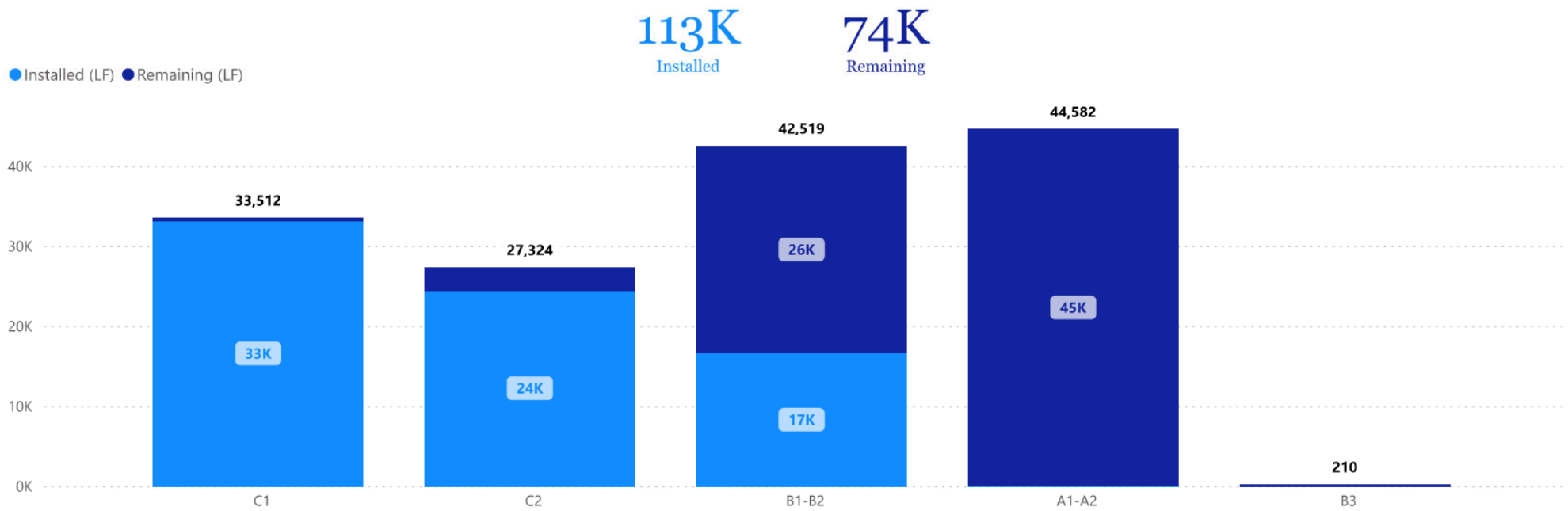


SWSP Contract Segment A1-A2 - Construction Progress

WHCRWA  NFBWA
**SURFACE WATER
 SUPPLY PROJECT**

Project ID	Bid Quantity (LF)
S3-A4	9,882
S3-A3	5,670
S3-A2	11,402
S3-A1	12,750
CPS	0
C2	27,324
C1	33,512
B3	210
B1-B2	42,519
A1-A2	44,582
Total	187,851

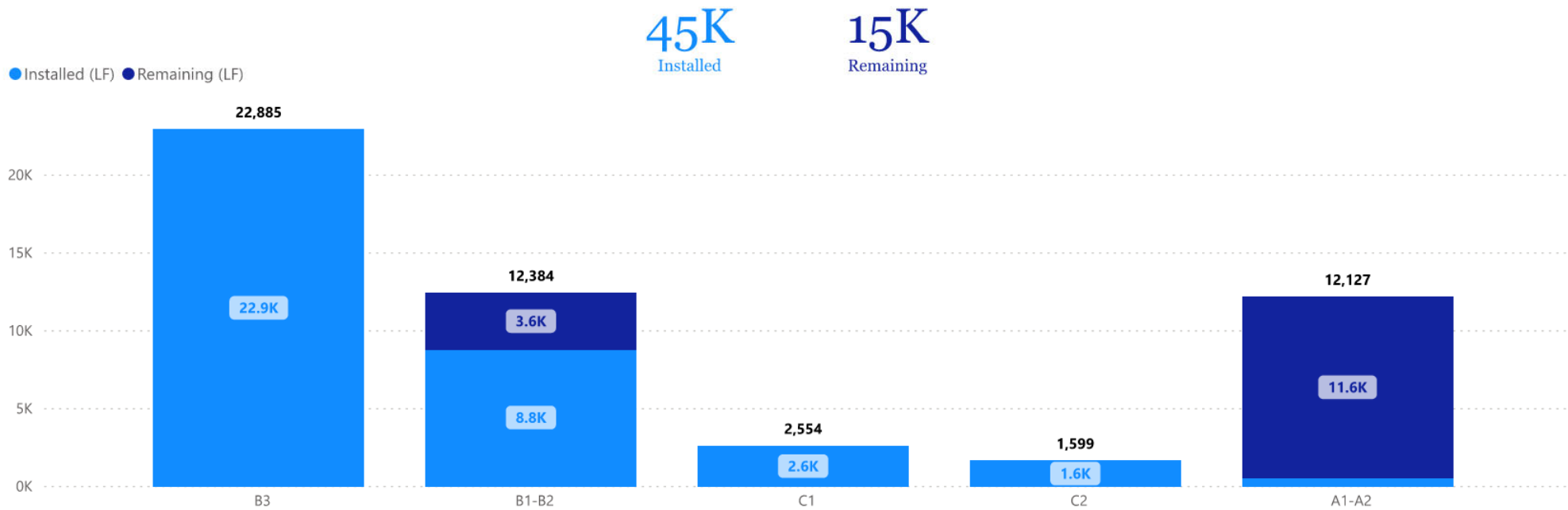
Open Cut (LF) by Project



WHCRWA  NFBWA
**SURFACE WATER
 SUPPLY PROJECT**

Tunneling (LF) by Project

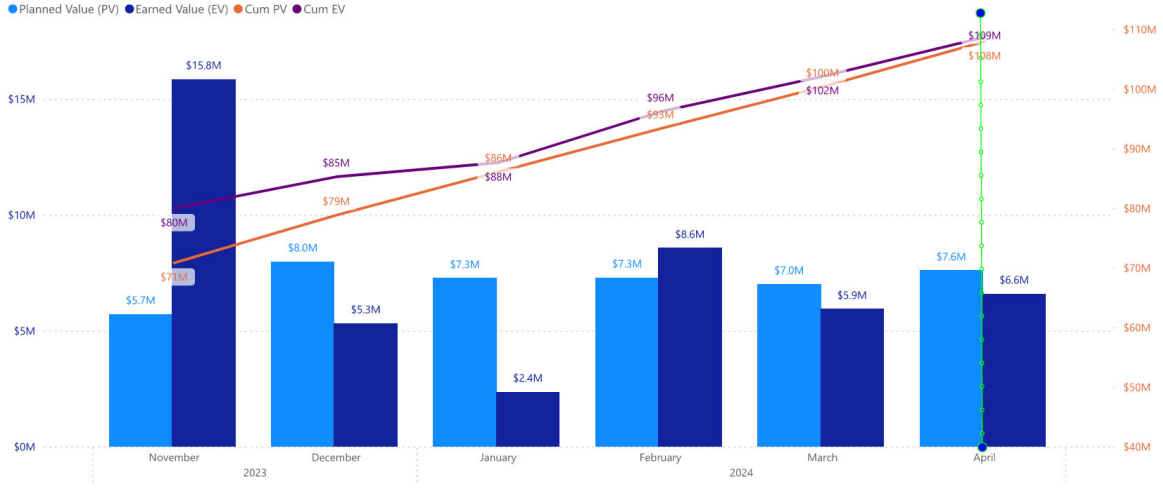
Project ID	Bid Quantity (LF)
A1-A2	12,127
B1-B2	12,384
B3	22,885
C1	2,554
C2	1,599
S3-A1	1,270
S3-A2	2,626
S3-A3	3,076
S3-A4	1,198
Total	59,719



Project Name
 Segments B1 & B2
 11/25/2023 4/25/2024



Segments B1|B2



SWSP Segment B1-B2



Compacting Backfill on 96-IN Pipe East of Ella Blvd.



Beltway 8 Connecting MTBM Utilities



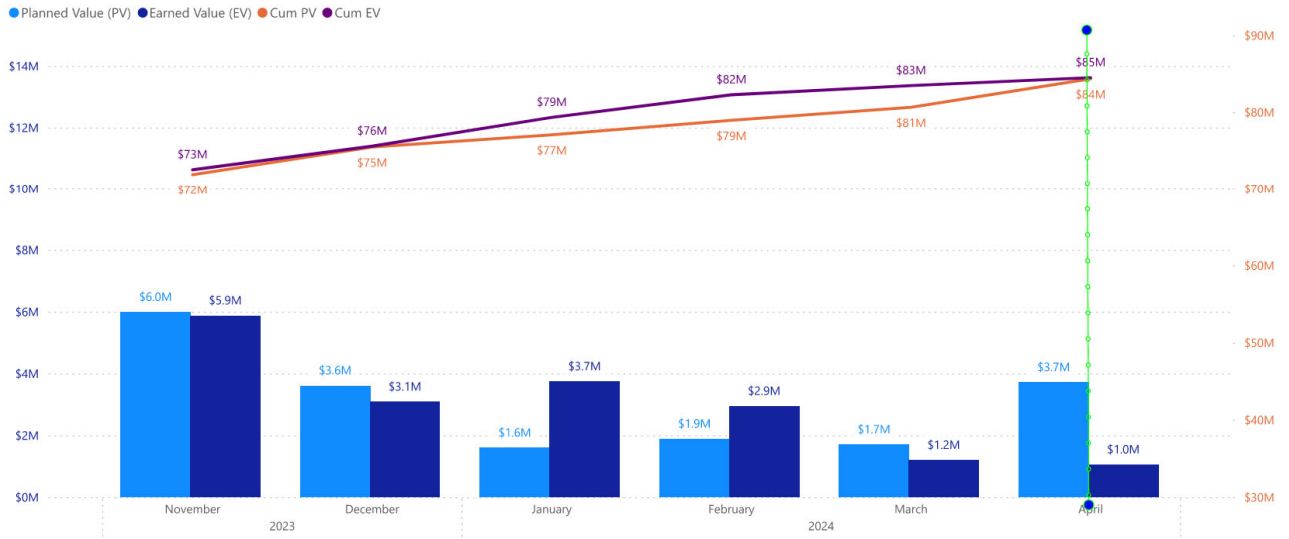
Lowering Pipe to Thread 290 Tunnel

Project Name
Segment B3

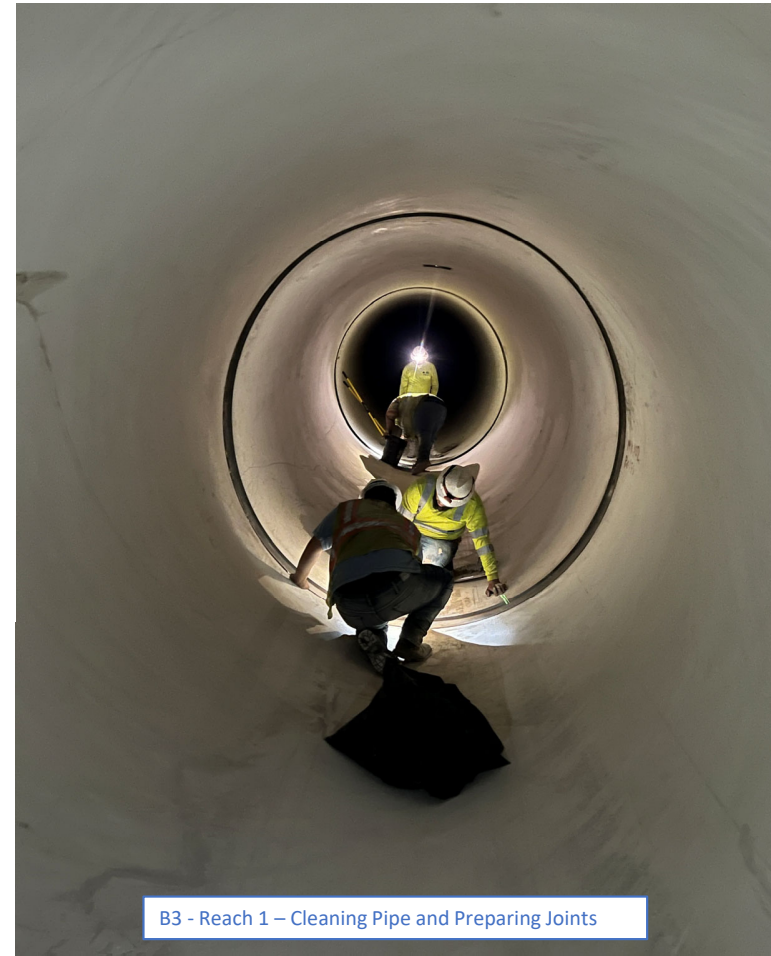
11/25/2023 4/25/2024



Segment B3



SWSP Segment B3



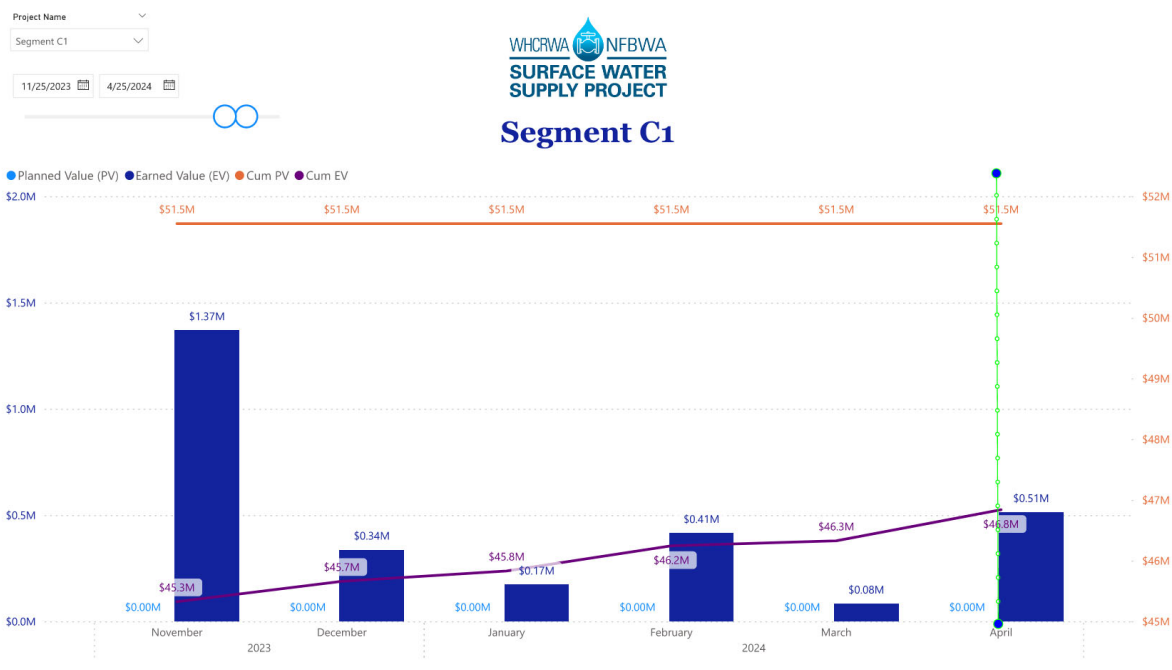
B3 - Reach 1 – Cleaning Pipe and Preparing Joints



B3 – Lowering Pipe at Shaft 5



B3 - Reach 2 – Pipe Installation



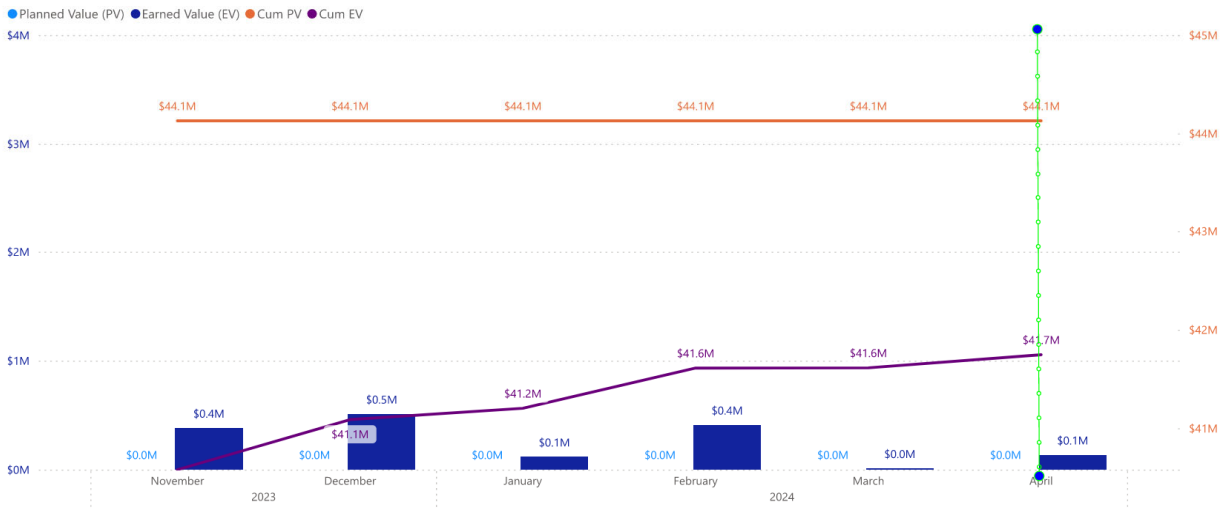
SWSP Segment C1



Project Name
Segment C2
11/25/2023 4/25/2024



Segment C2



SWSP Segment C2



Sod Restoration in Charlestown Colony



Draining Waterline



Draining Waterline



Draining Waterline

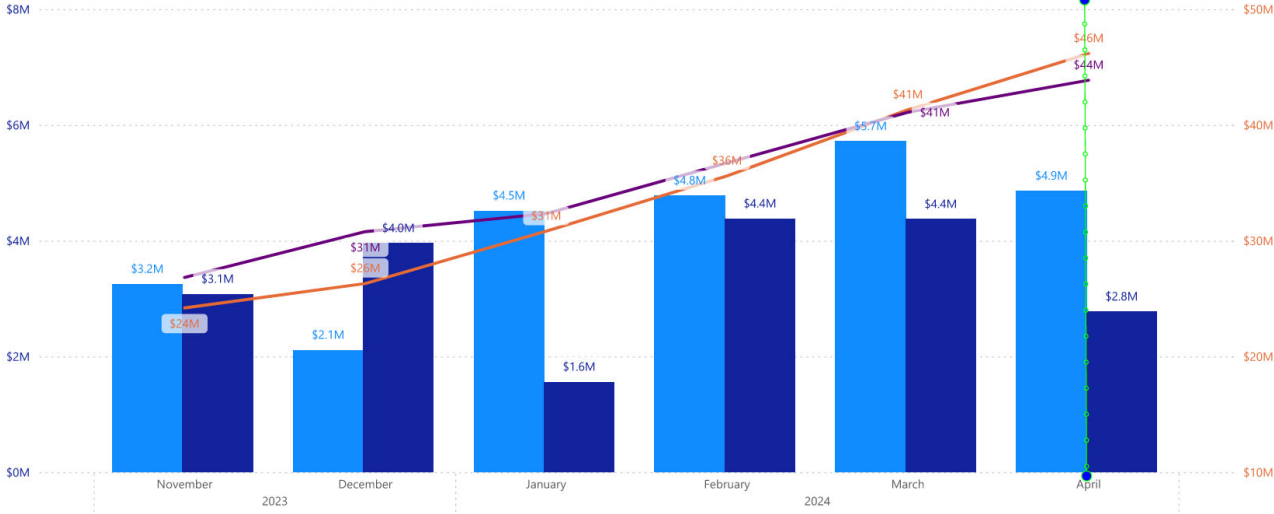
Project Name
Central Pump Station

11/25/2023 4/25/2024



Central Pump Station

Planned Value (PV) Earned Value (EV) Cum PV Cum EV



SWSP Central Pump Station



GST 2 Roof Panel Install



Maintenance and Operations Buildings



High Service Pump Station

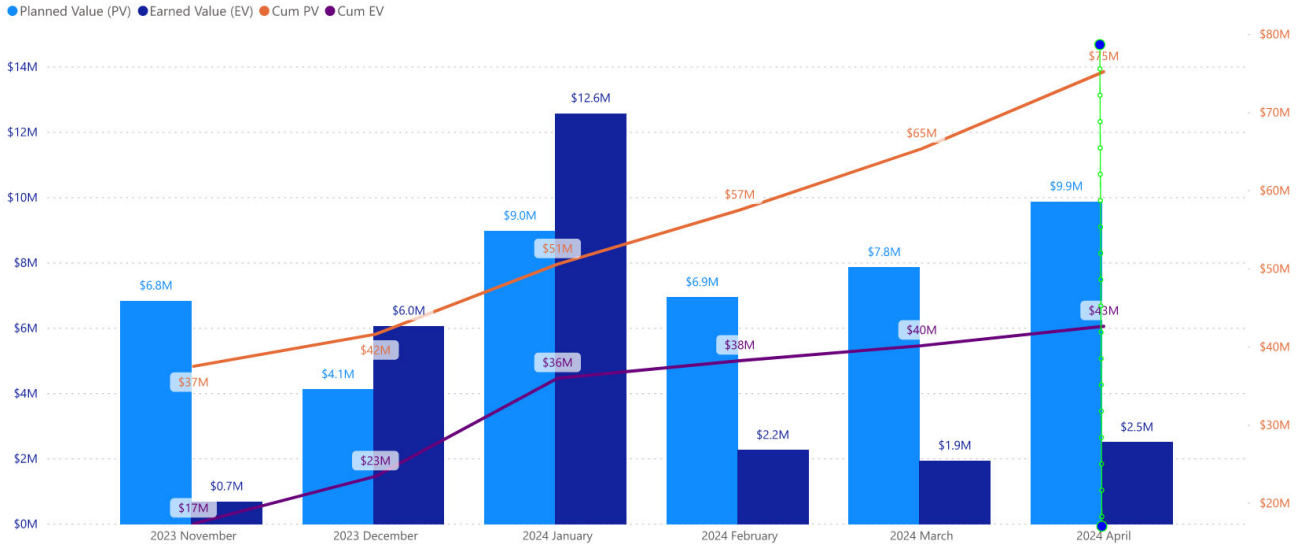


Overall Site

Project Name
 Segments A1 & A2
 11/25/2023 4/25/2024



Segments A1|A2



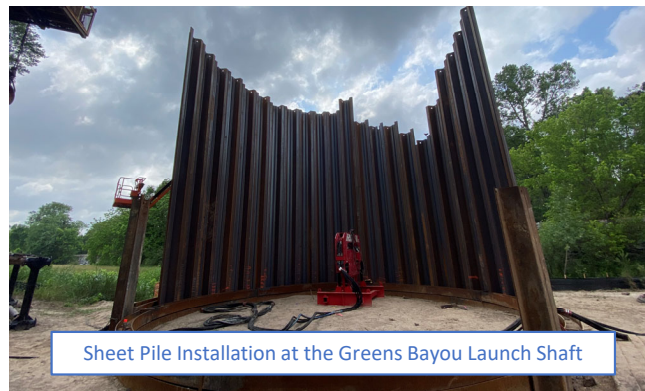
SWSP Segment A1-A2



Lowering First 96-in WL Into Trench



Installation of Steel Piles at the HCFC P127.1 Launch Shaft



Sheet Pile Installation at the Greens Bayou Launch Shaft