

March 2024 Monthly Construction Status Report

Updated: 04.03.2024



Central Pump Station – March 2024

WHCRWA Ongoing Surface Water Supply Projects

Segment B1-B2

3 MILES OF 84-INCH DIAMETER AND 8 MILES OF 96-INCH WATERLINES FROM WEST OF BRITTMOORE ROAD TO WEST OF I-45

Segment B3

4.4 MILES OF 96-INCH DIAMETER WATER LINES FROM WEST OF I-45 TO THE SOUTH SIDE OF HOPPER RD. VIA TUNNEL

Segment 3 - A1 to Segment 3 – A3 (3 Projects)

7 MILES OF 42-INCH WATER LINE ALONG CENTERPOINT ENERGY CORRIDOR FROM NORTH OF LAKESIDE FOREST LN TO SEGMENT C

Segment C1

5 MILES OF 84-INCH, 66-INCH, AND 36-INCH WATER LINE FROM WESTFIELD VILLAGE DRIVE TO HIGHWAY 6

Segment C2

5 MILES OF 84-INCH WATER LINE FROM HIGHWAY 6 TO BRITTMOORE RD.

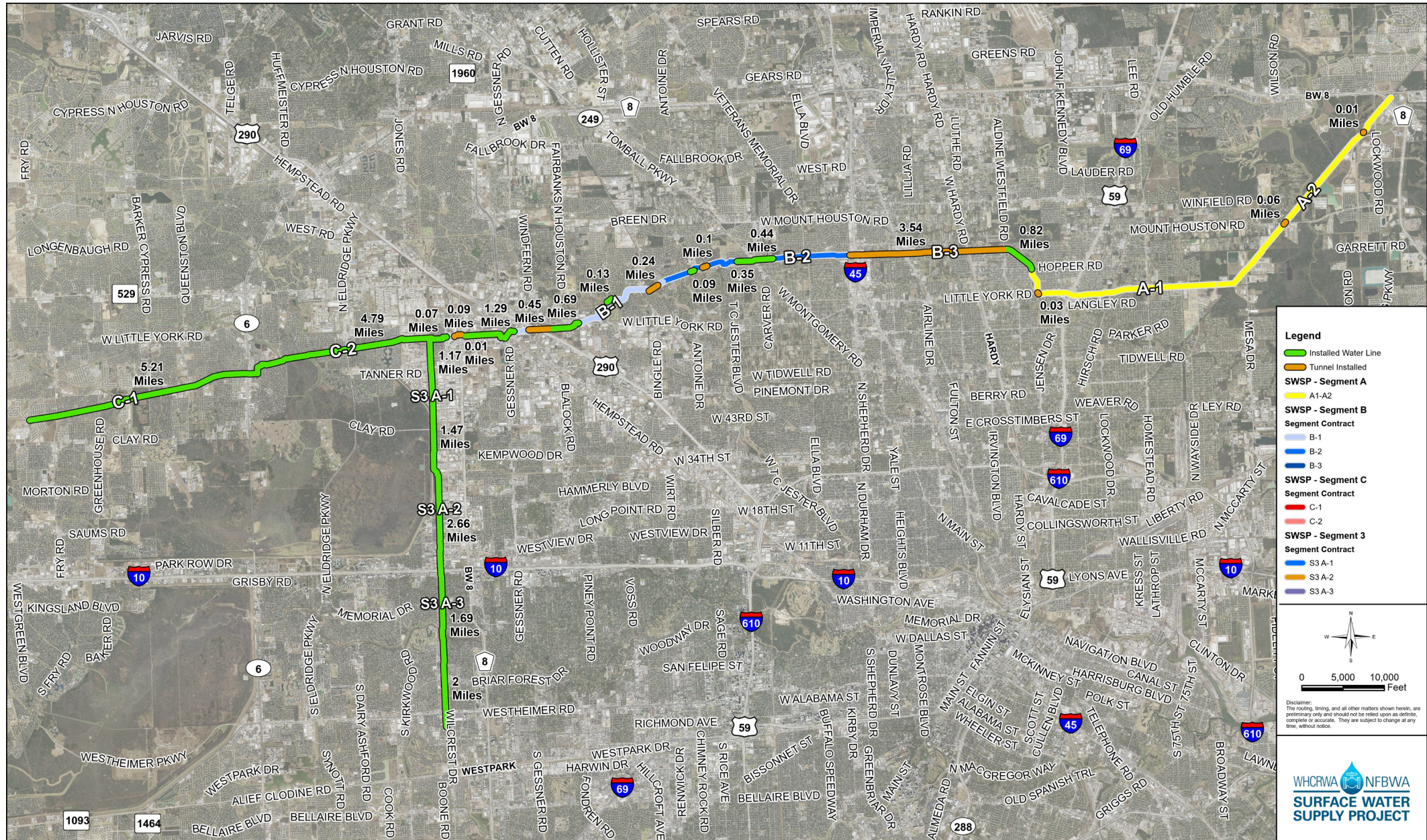
Central Pump Station

CONSTRUCTION OF A CENTRAL PUMP STATION THAT WILL RECEIVE WATER FROM THE RE-PUMP STATION AND THEN TRANSFER WATER TO MUDS

Segment A1-A2

11 MILES OF 96-INCH WATER LINE FROM HOPPER RD. TO THE WHCRWA METER STATION NEAR THE NEWPP

Current SWSP Construction Projects Overview



Legend

- Installed Water Line
- Tunnel Installed
- SWSP - Segment A**
 - A1-A2
- SWSP - Segment B**
 - Segment Contract
 - B-1
 - B-2
 - B-3
- SWSP - Segment C**
 - Segment Contract
 - C-1
 - C-2
- SWSP - Segment 3**
 - Segment Contract
 - S3 A-1
 - S3 A-2
 - S3 A-3

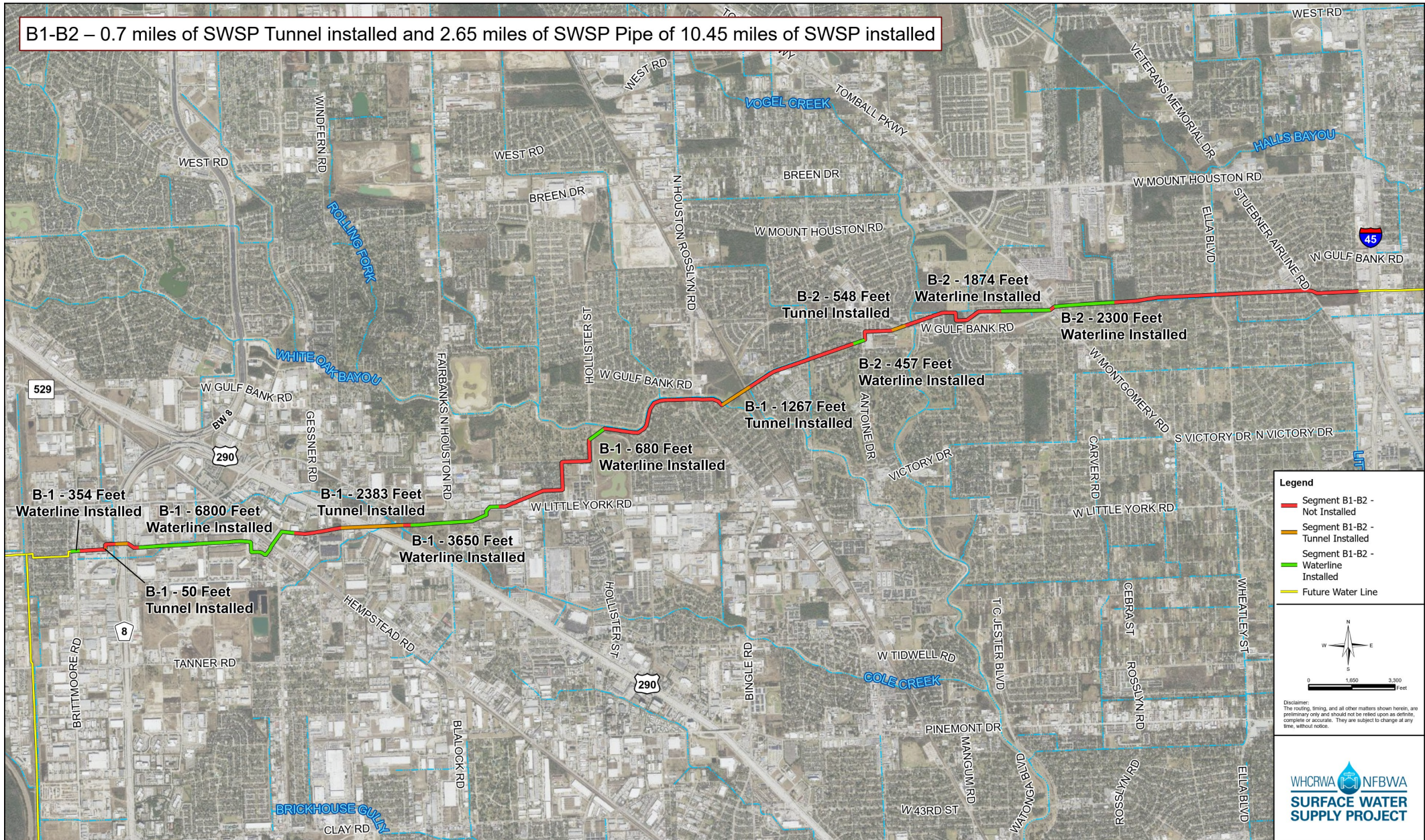
Disclaimer: The routing, timing, and all other matters shown herein are preliminary only and should not be relied upon as definite, complete or accurate. They are subject to change at any time, without notice.



SWSP - Construction Overview

Construction Progress – Segment B1-B2

B1-B2 – 0.7 miles of SWSP Tunnel installed and 2.65 miles of SWSP Pipe of 10.45 miles of SWSP installed

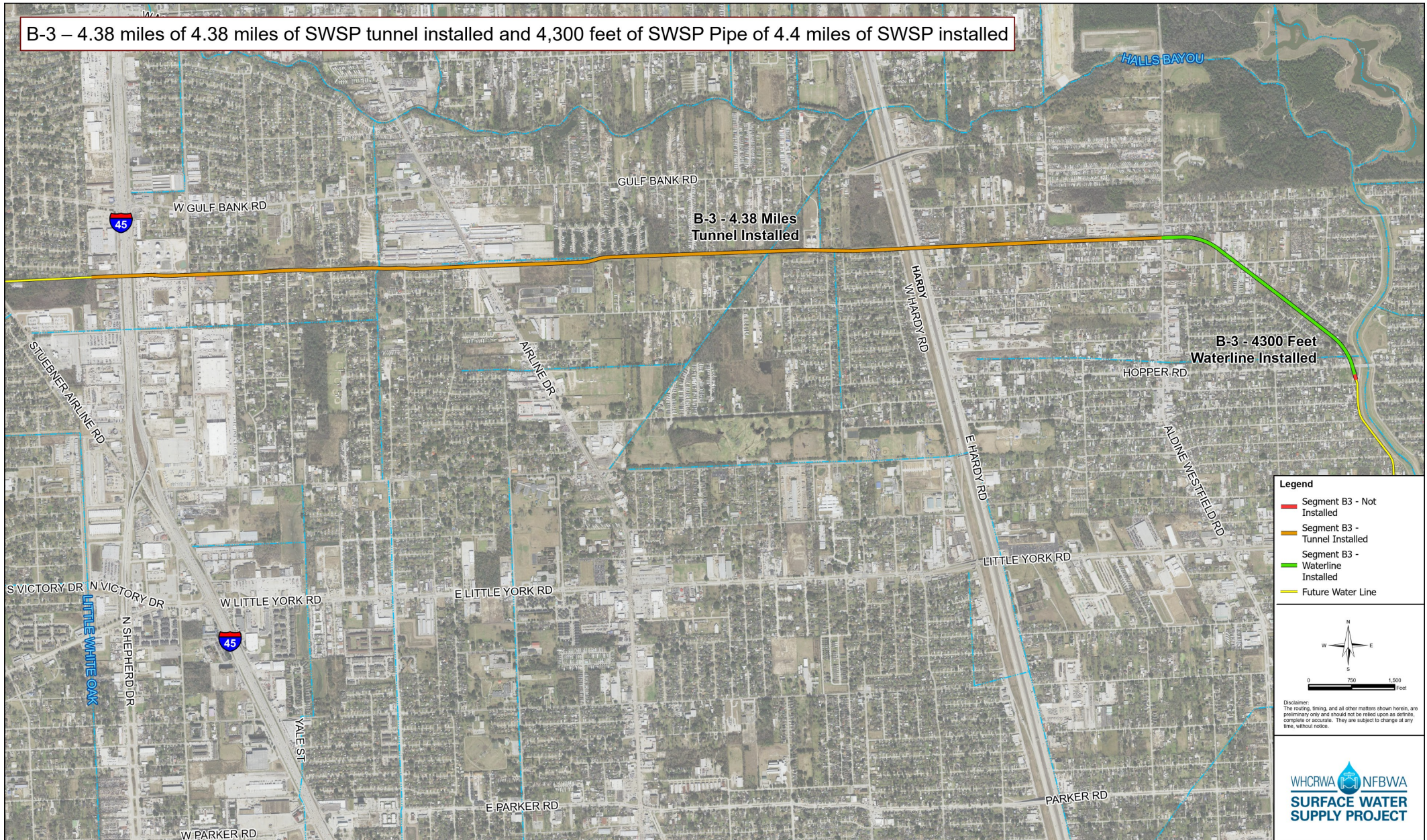


SWSP Contract Segment B1-B2 - Construction Progress



Construction Progress – Segment B3

B-3 – 4.38 miles of 4.38 miles of SWSP tunnel installed and 4,300 feet of SWSP Pipe of 4.4 miles of SWSP installed



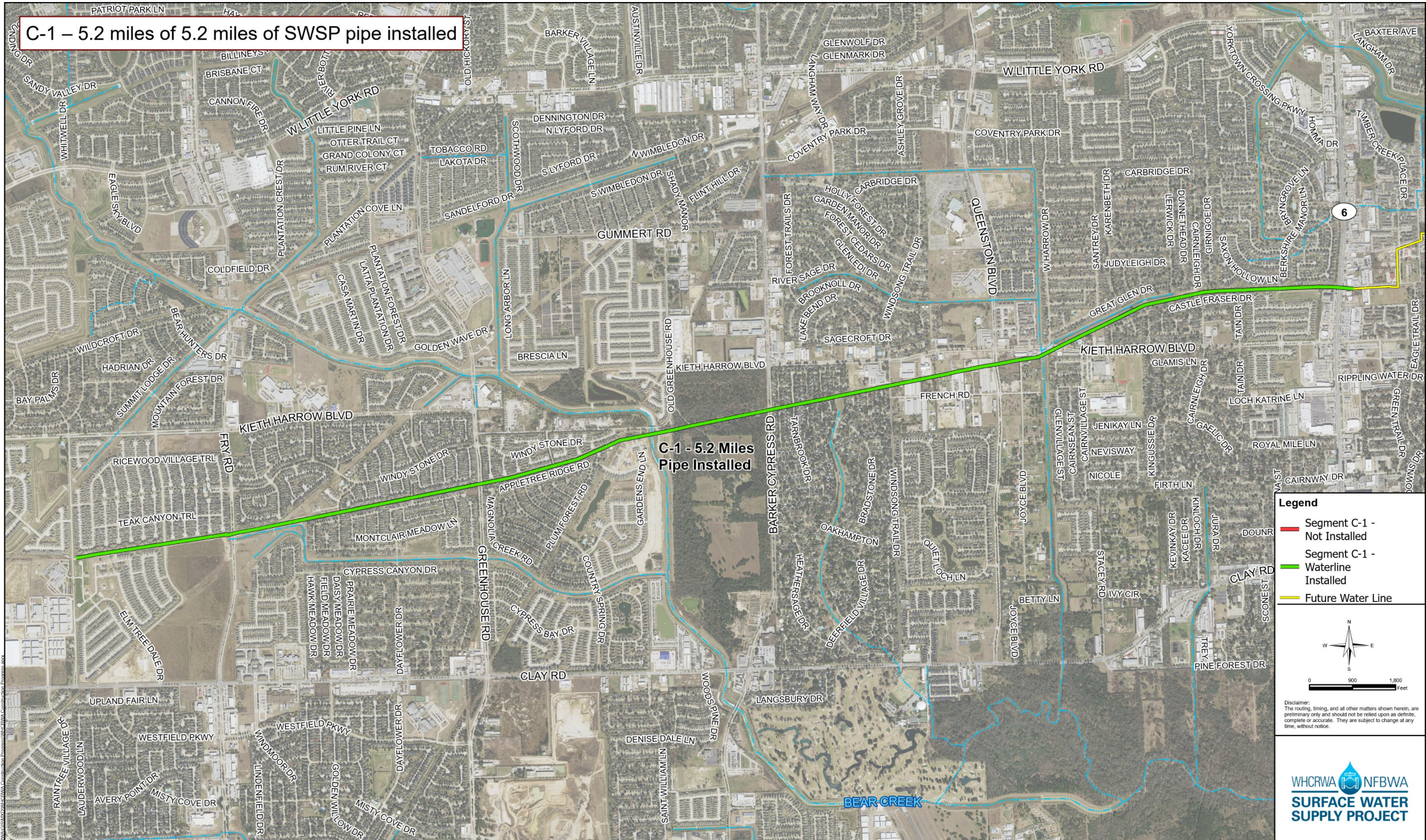
Legend

- Segment B3 - Not Installed
- Segment B3 - Tunnel Installed
- Segment B3 - Waterline Installed
- Future Water Line

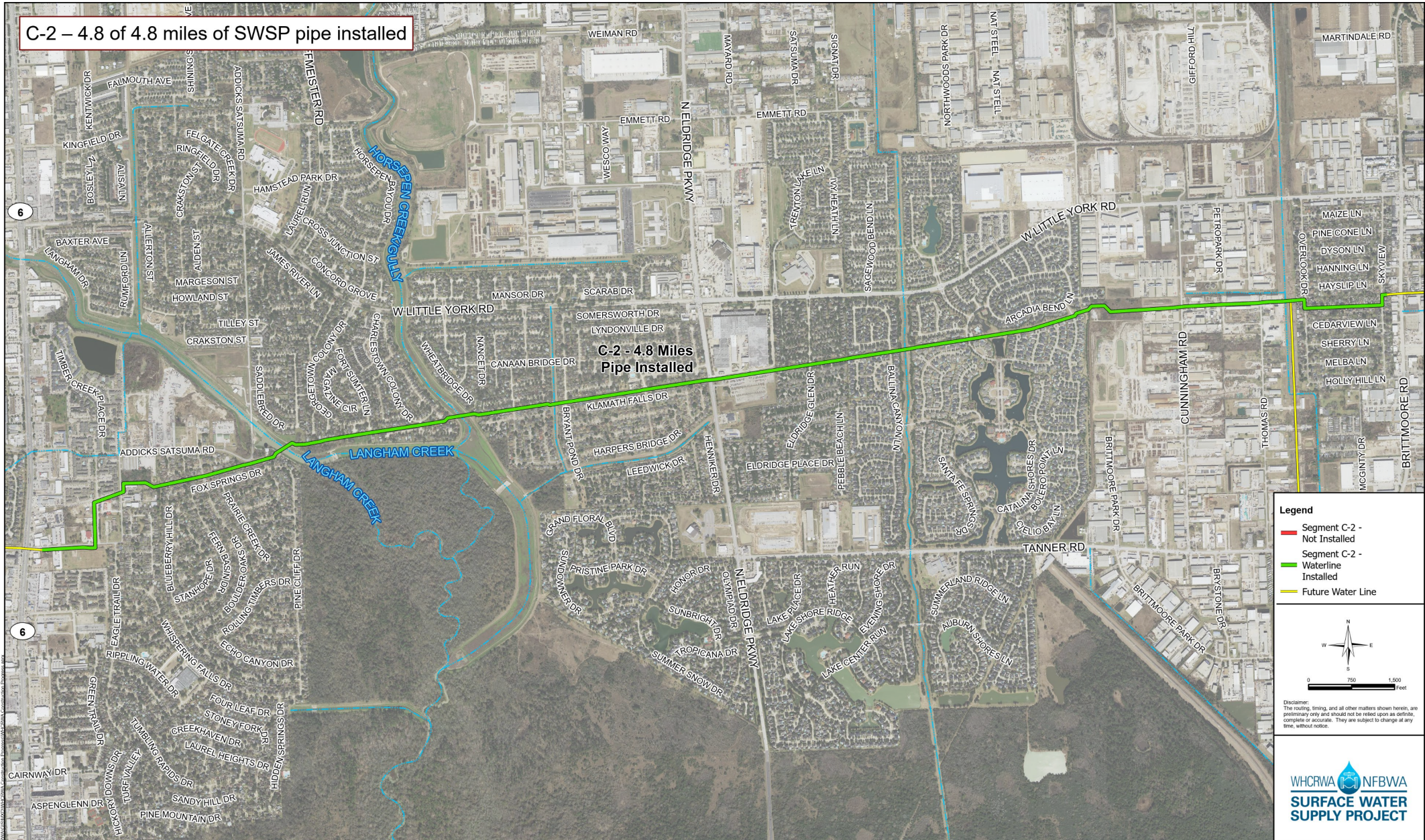
North arrow and scale bar (0 to 1,500 Feet).
Disclaimer: The routing, timing, and all other matters shown herein, are preliminary only and should not be relied upon as definite, complete or accurate. They are subject to change at any time, without notice.

WHCRWA NFBWA
SURFACE WATER SUPPLY PROJECT

Construction Progress – Segment C1

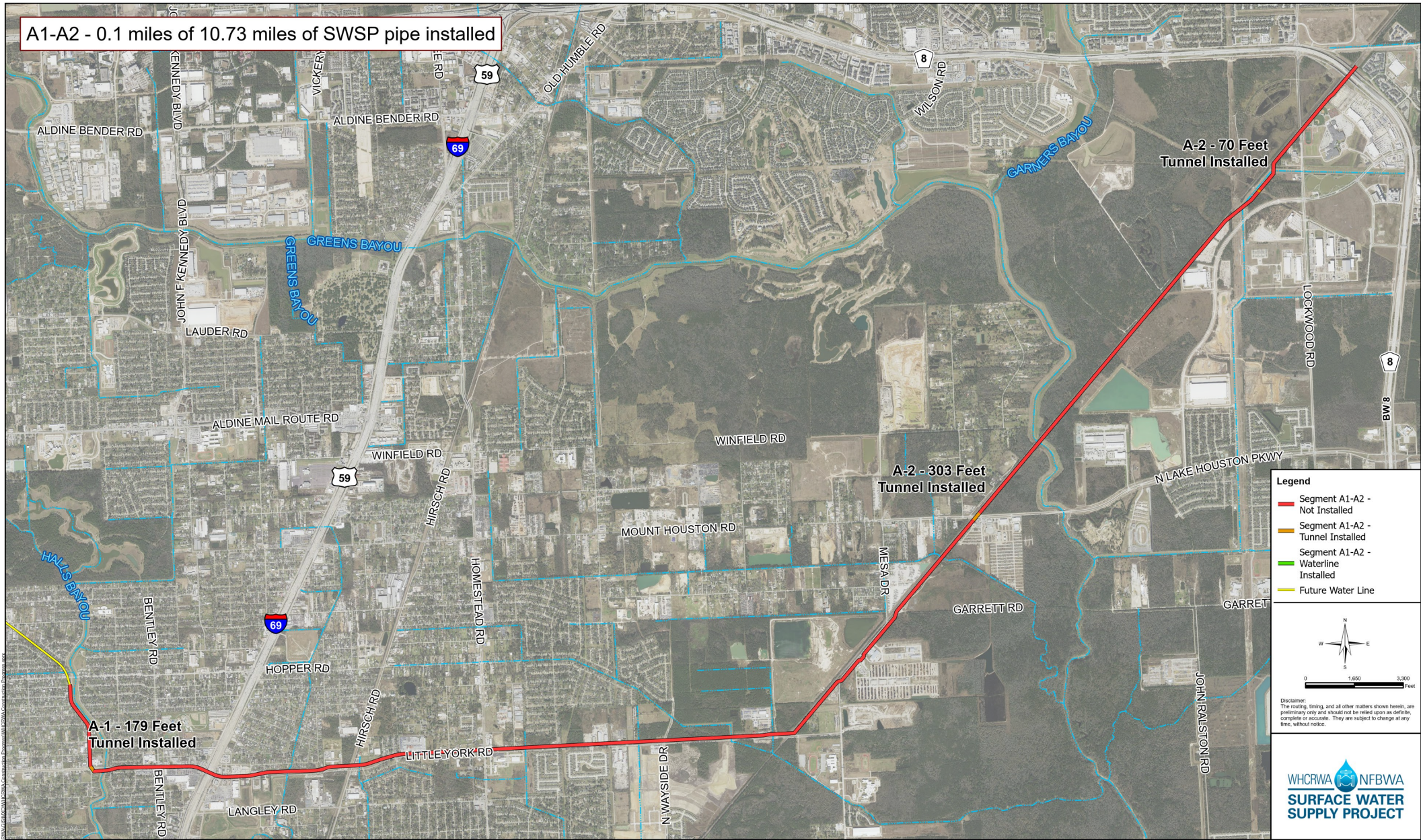


Construction Progress – Segment C2



SWSP Contract Segment C-2 - Construction Progress

Construction Progress – Segment A1-A2



A1-A2 - 0.1 miles of 10.73 miles of SWSP pipe installed

Legend

- Segment A1-A2 - Not Installed
- Segment A1-A2 - Tunnel Installed
- Segment A1-A2 - Waterline Installed
- Future Water Line

Disclaimer:
The routing, timing, and all other matters shown herein, are preliminary only and should not be relied upon as definite, complete or accurate. They are subject to change at any time, without notice.

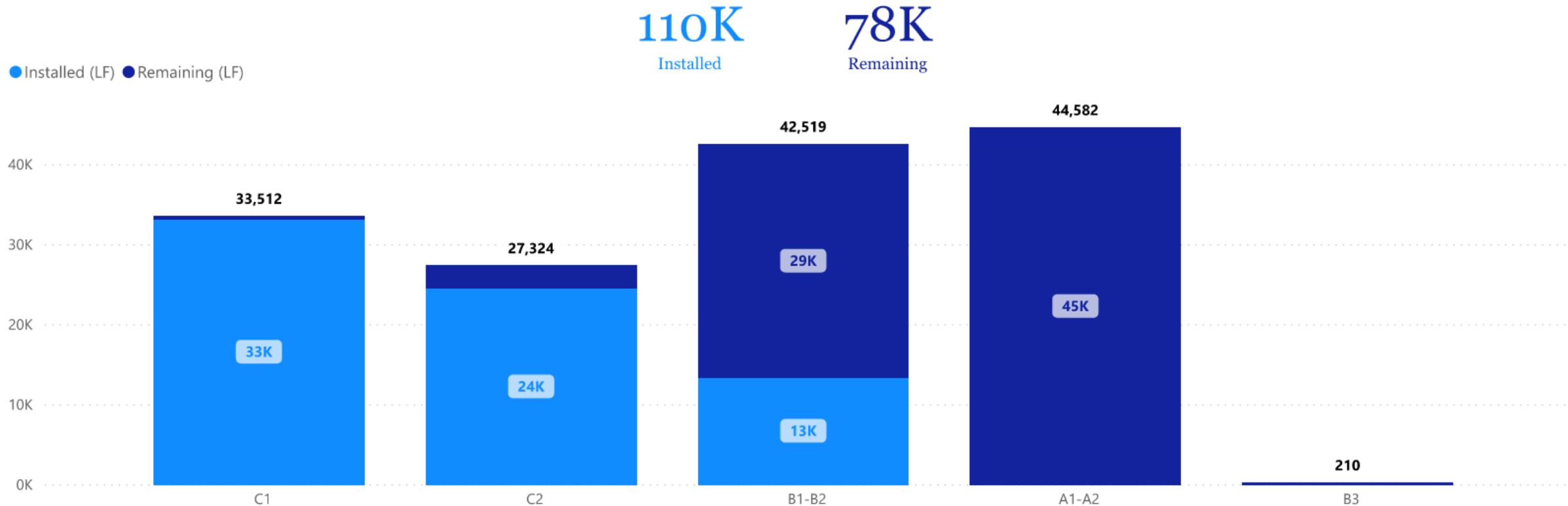




WHCRWA NFBWA
**SURFACE WATER
 SUPPLY PROJECT**

Open Cut (LF) by Project

Project ID	Bid Quantity (LF)
S3-A4	9,882
S3-A3	5,670
S3-A2	11,402
S3-A1	12,750
CPS	0
C2	27,324
C1	33,512
B3	210
B1-B2	42,519
A1-A2	44,582
Total	187,851

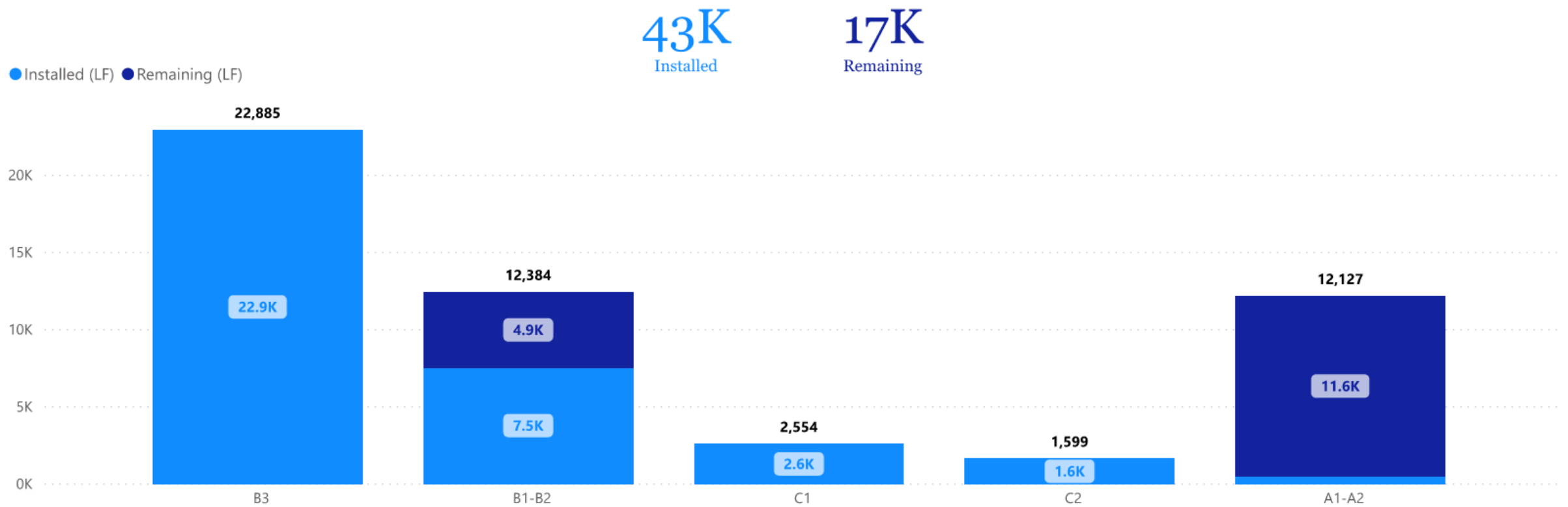


WHCRWA  NFBWA

SURFACE WATER SUPPLY PROJECT

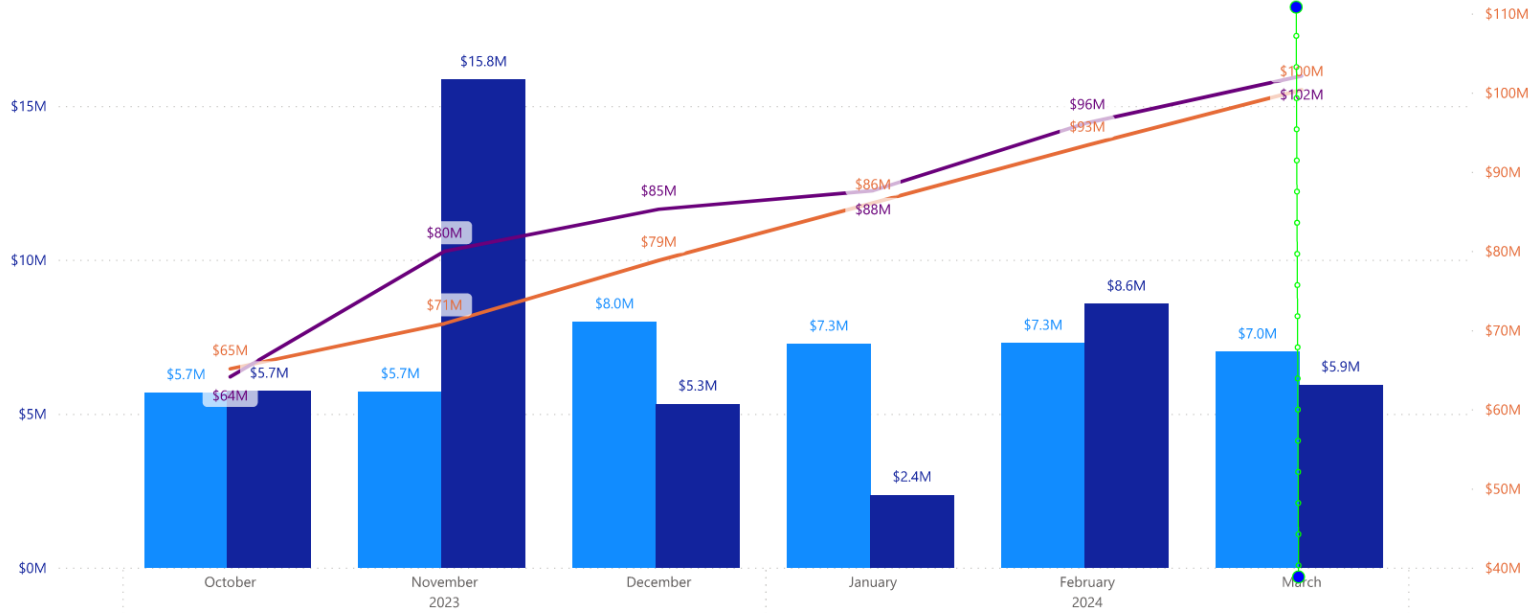
Project ID	Bid Quantity (LF)
A1-A2	12,127
B1-B2	12,384
B3	22,885
C1	2,554
C2	1,599
S3-A1	1,270
S3-A2	2,626
S3-A3	3,076
S3-A4	1,198
Total	59,719

Tunneling (LF) by Project



Segments B1|B2

Planned Value (PV) Earned Value (EV) Cum PV Cum EV



SWSP Segment B1-B2



Compacting Backfill on 96-IN Pipe East of Ella Blvd.



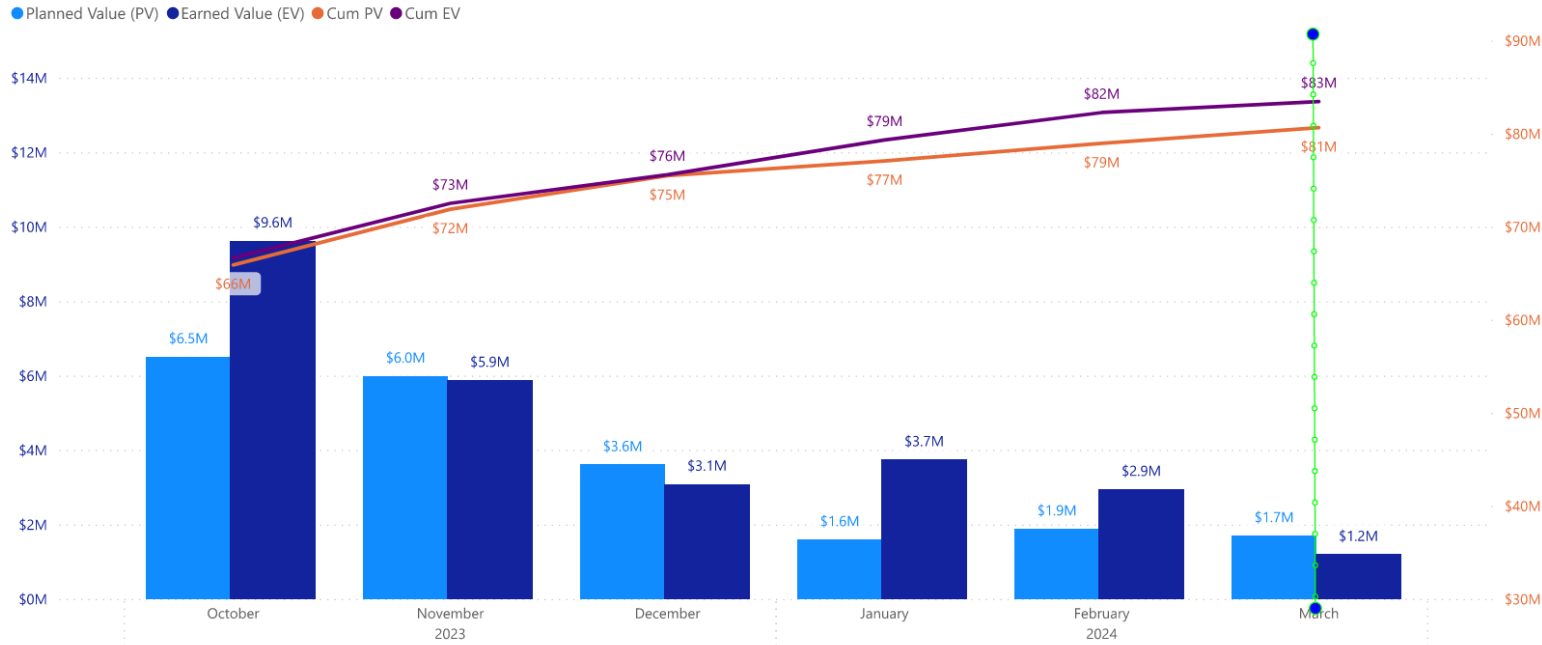
Beltway 8 Connecting MTBM Utilities



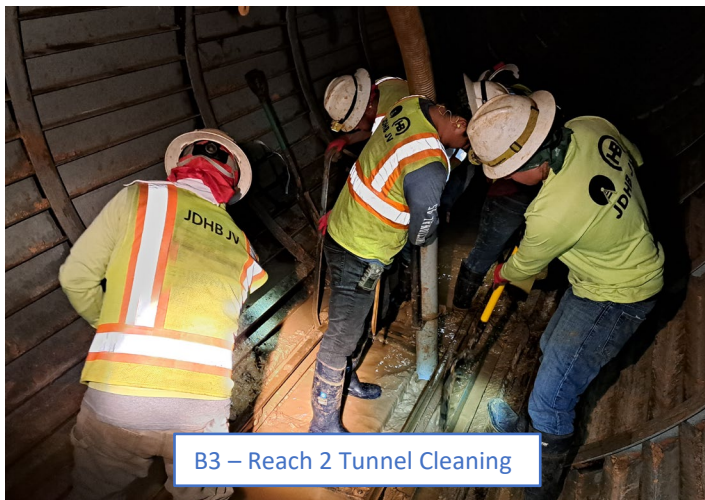
Lowering Pipe to Thread 290 Tunnel



Segment B3



B3 – Cathodic Protection Installation



B3 – Reach 2 Tunnel Cleaning



B3 - Reach 4 – TBM Retrieval

Project Name

Segment C1

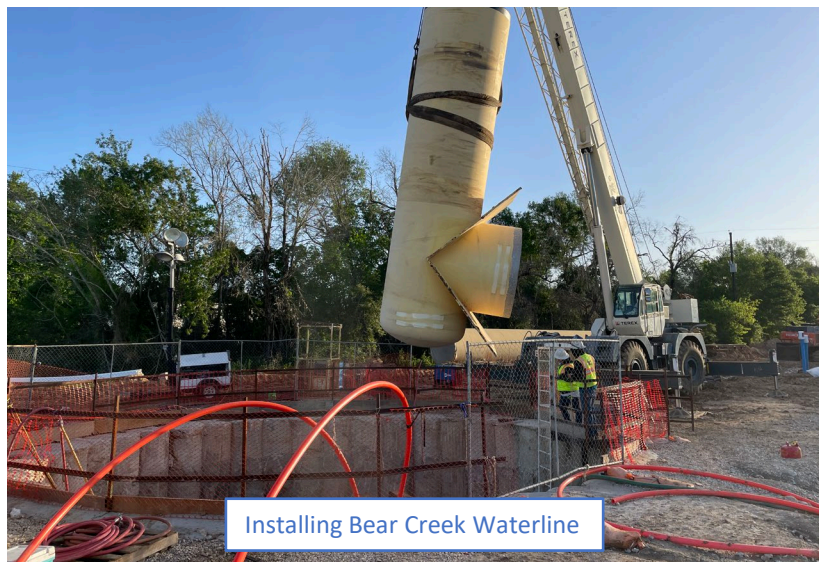
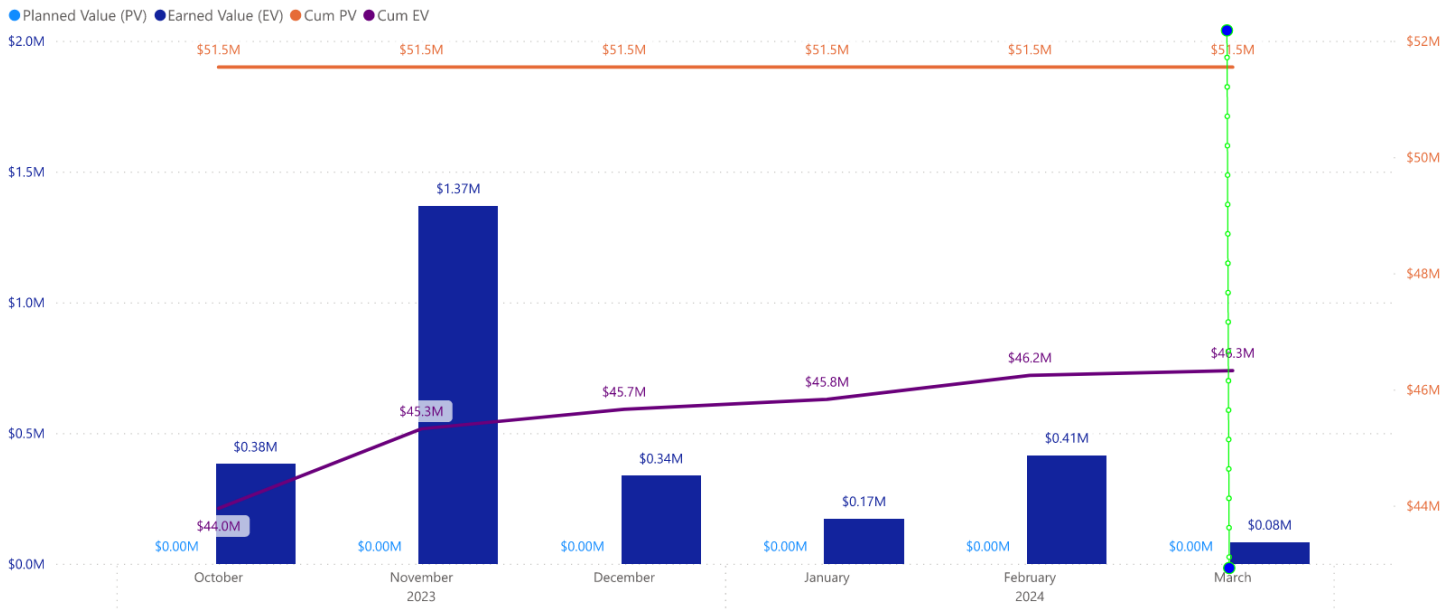
10/25/2023

3/25/2024

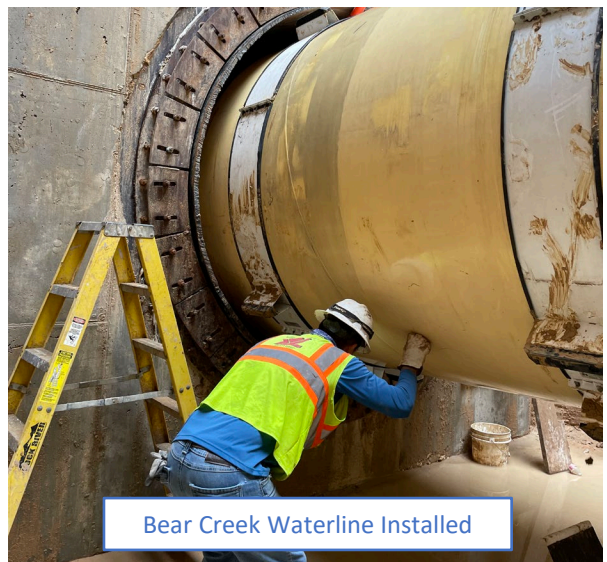


Segment C1

SWSP Segment C1



Installing Bear Creek Waterline



Bear Creek Waterline Installed

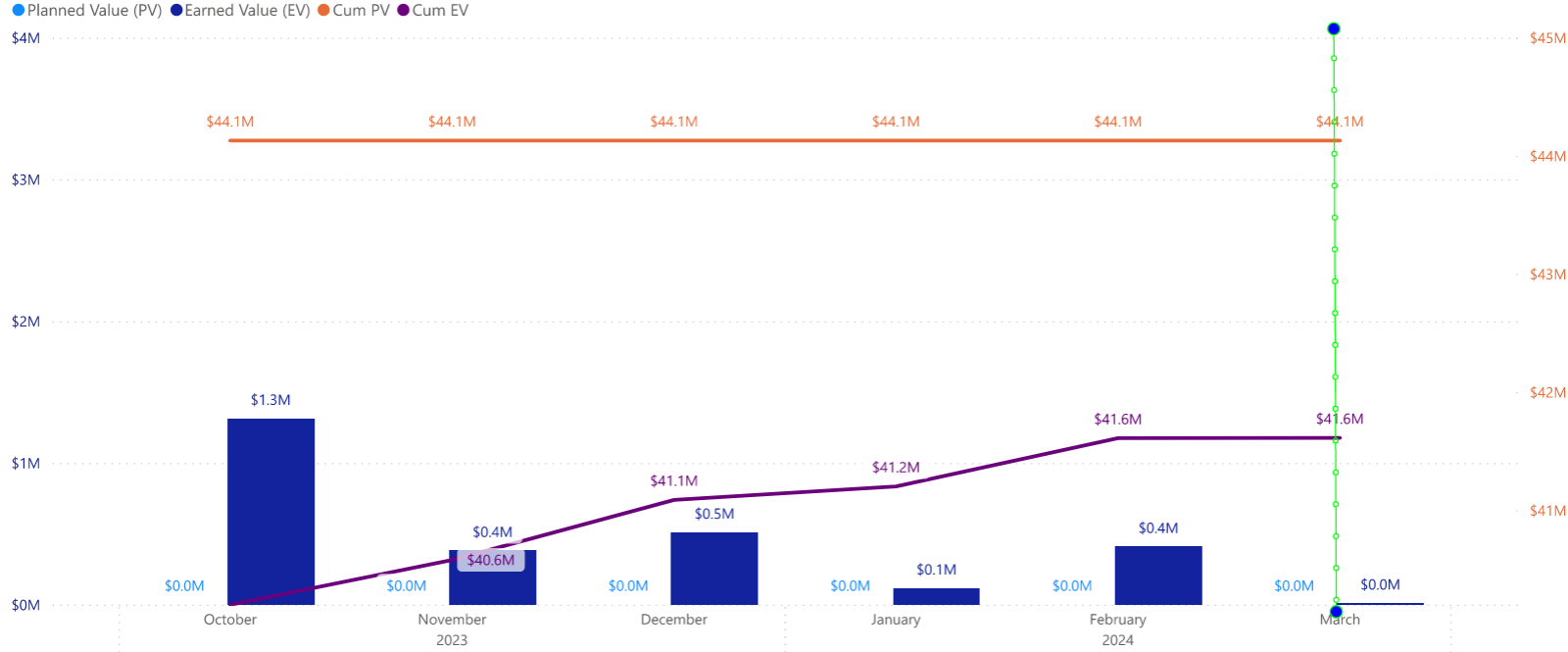


Installing Bear Creek Waterline

Project Name
Segment C2

Segment C2

10/25/2023 3/25/2024



SWSP Segment C2



Framing and Rebar Installation at Manholes



BFV Internal Restoration Complete

Coring ARV Outlet Piping

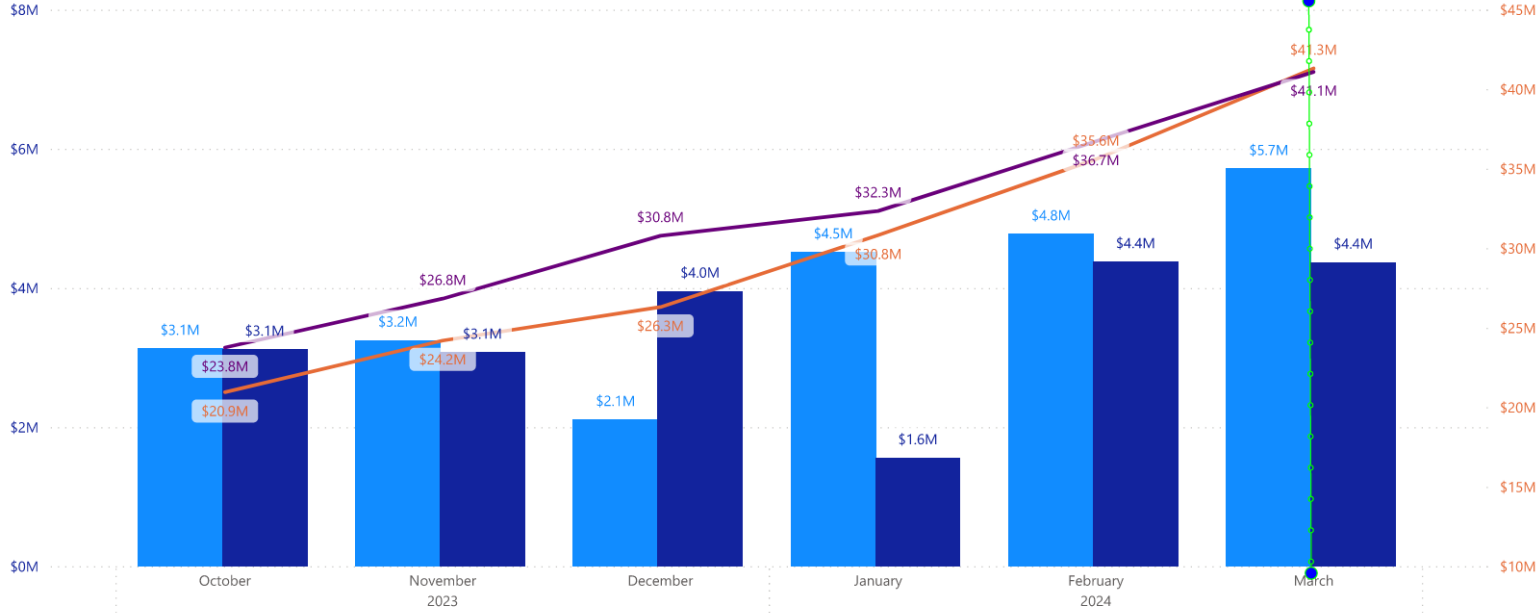
Project Name

Central Pump Station

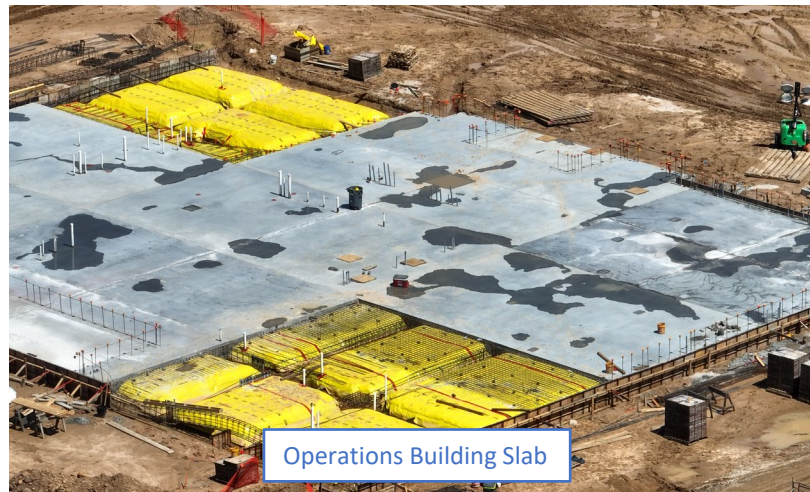
10/25/2023 3/25/2024

Central Pump Station

● Planned Value (PV) ● Earned Value (EV) ● Cum PV ● Cum EV



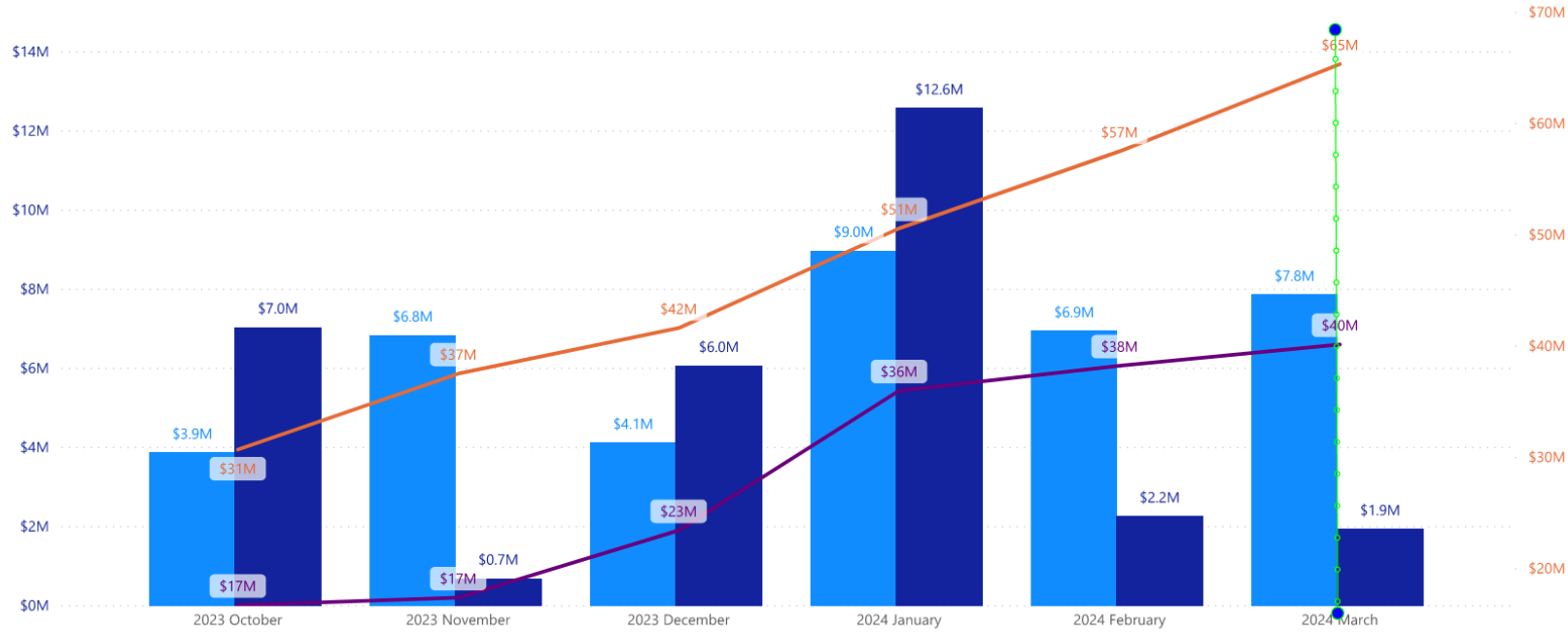
SWSP Central Pump Station



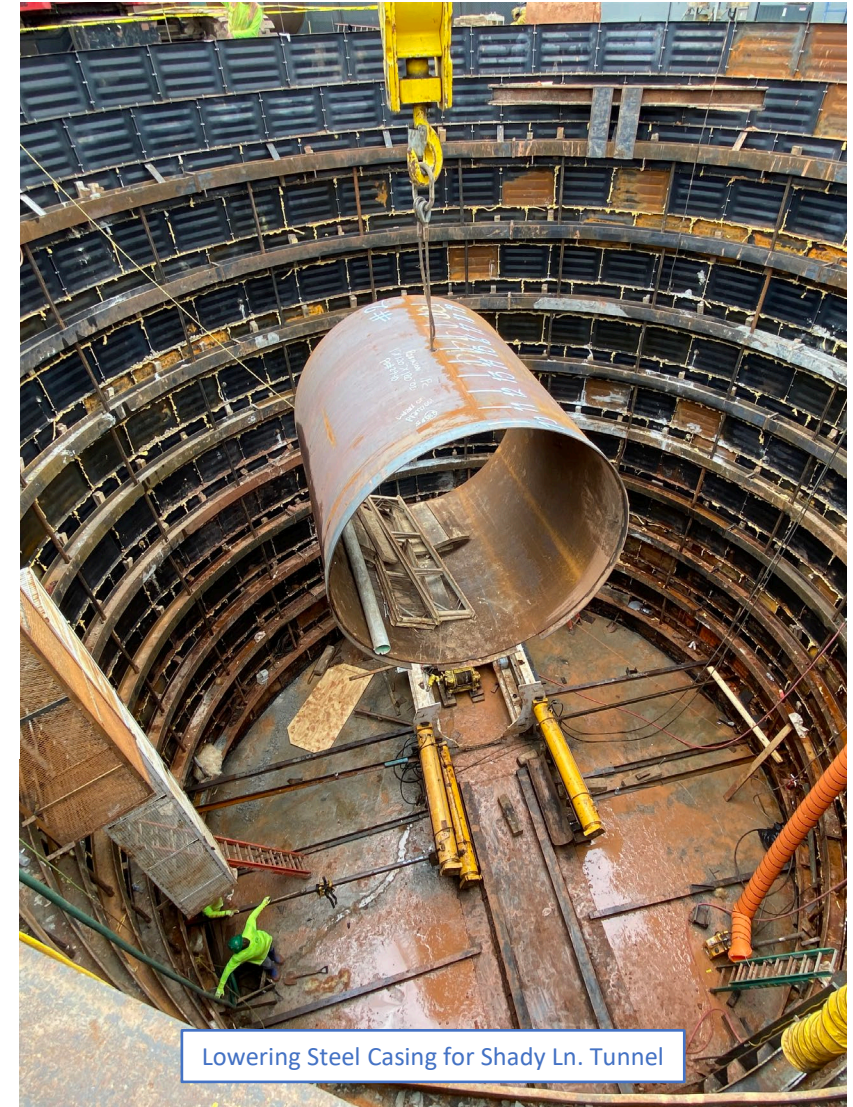


Segments A1|A2

● Planned Value (PV) ● Earned Value (EV) ● Cum PV ● Cum EV



SWSP Segment A1-A2



Lowering Steel Casing for Shady Ln. Tunnel



Storage of 96-IN Waterline Pipe



Excavation of Homestead Rd. Receiving Shaft