

# January 2024 Monthly Construction Status Report

Updated: 02.05.2024



B3 – Tunnel Tour with WHCRWA Board Members

## WHCRWA Ongoing Surface Water Supply Projects

### Segment B1-B2

3 MILES OF 84-INCH DIAMETER AND 8 MILES OF 96-INCH WATERLINES FROM WEST OF BRITTMOORE ROAD TO WEST OF I-45

### Segment B3

4.4 MILES OF 96-INCH DIAMETER WATER LINES FROM WEST OF I-45 TO THE SOUTH SIDE OF HOPPER RD. VIA TUNNEL

### Segment 3 - A1 to Segment 3 – A3 (3 Projects)

7 MILES OF 42-INCH WATER LINE ALONG CENTERPOINT ENERGY CORRIDOR FROM NORTH OF LAKESIDE FOREST LN TO SEGMENT C

### Segment C1

5 MILES OF 84-INCH, 66-INCH, AND 36-INCH WATER LINE FROM WESTFIELD VILLAGE DRIVE TO HIGHWAY 6

### Segment C2

5 MILES OF 84-INCH WATER LINE FROM HIGHWAY 6 TO BRITTMOORE RD.

### Central Pump Station

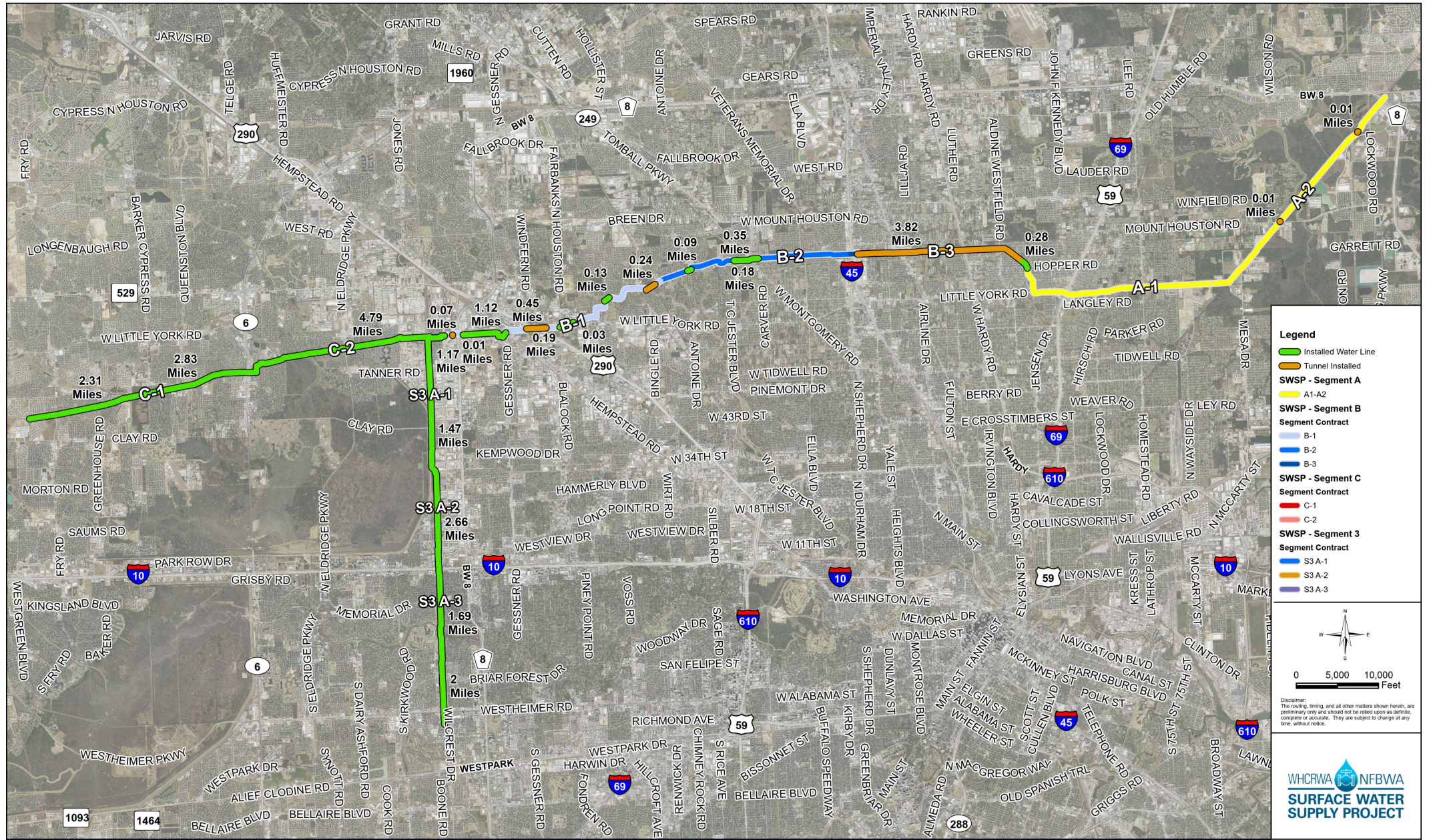
CONSTRUCTION OF A CENTRAL PUMP STATION THAT WILL RECEIVE WATER FROM THE RE-PUMP STATION AND THEN TRANSFER WATER TO MUDS

### Segment A1-A2

11 MILES OF 96-INCH WATER LINE FROM HOPPER RD. TO THE WHCRWA METER STATION NEAR THE NEWPP

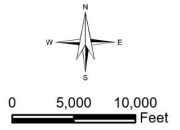


# Current SWSP Construction Projects Overview



**Legend**

- Installed Water Line
- Tunnel Installed
- SWSP - Segment A**
  - A1-A2
- SWSP - Segment B**
  - Segment Contract
    - B-1
    - B-2
    - B-3
- SWSP - Segment C**
  - Segment Contract
    - C-1
    - C-2
- SWSP - Segment 3**
  - Segment Contract
    - S3 A-1
    - S3 A-2
    - S3 A-3



Disclaimer:  
The routing, timing, and all other matters shown herein, are preliminary only and should not be relied upon as definite, complete or accurate. They are subject to change at any time, without notice.

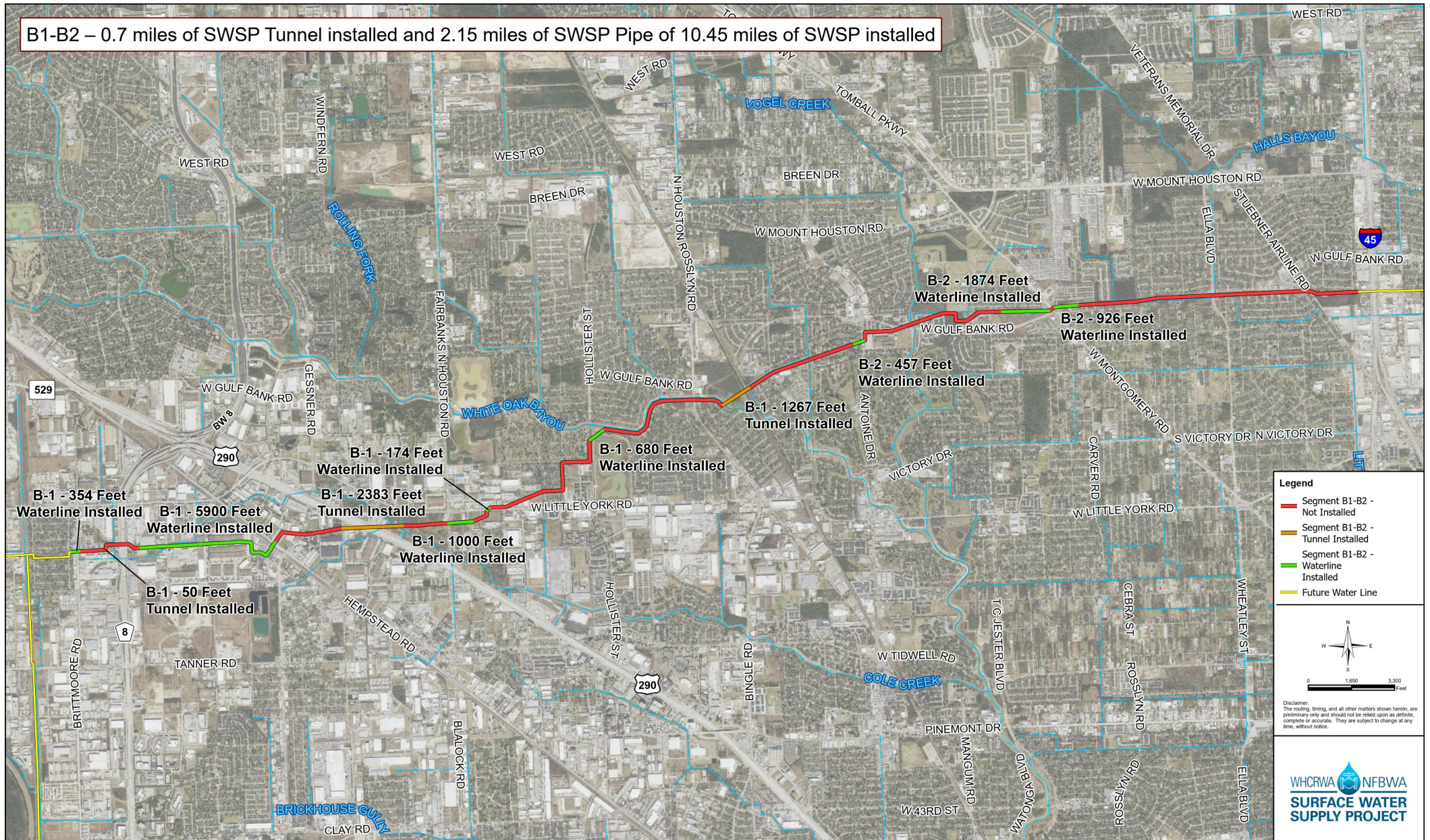


## SWSP - Construction Overview



# Construction Progress – Segment B1-B2

B1-B2 – 0.7 miles of SWSP Tunnel installed and 2.15 miles of SWSP Pipe of 10.45 miles of SWSP installed



**Legend**

- Segment B1-B2 - Not Installed
- Segment B1-B2 - Tunnel Installed
- Segment B1-B2 - Waterline Installed
- Future Water Line

0 1,850 3,700 Feet

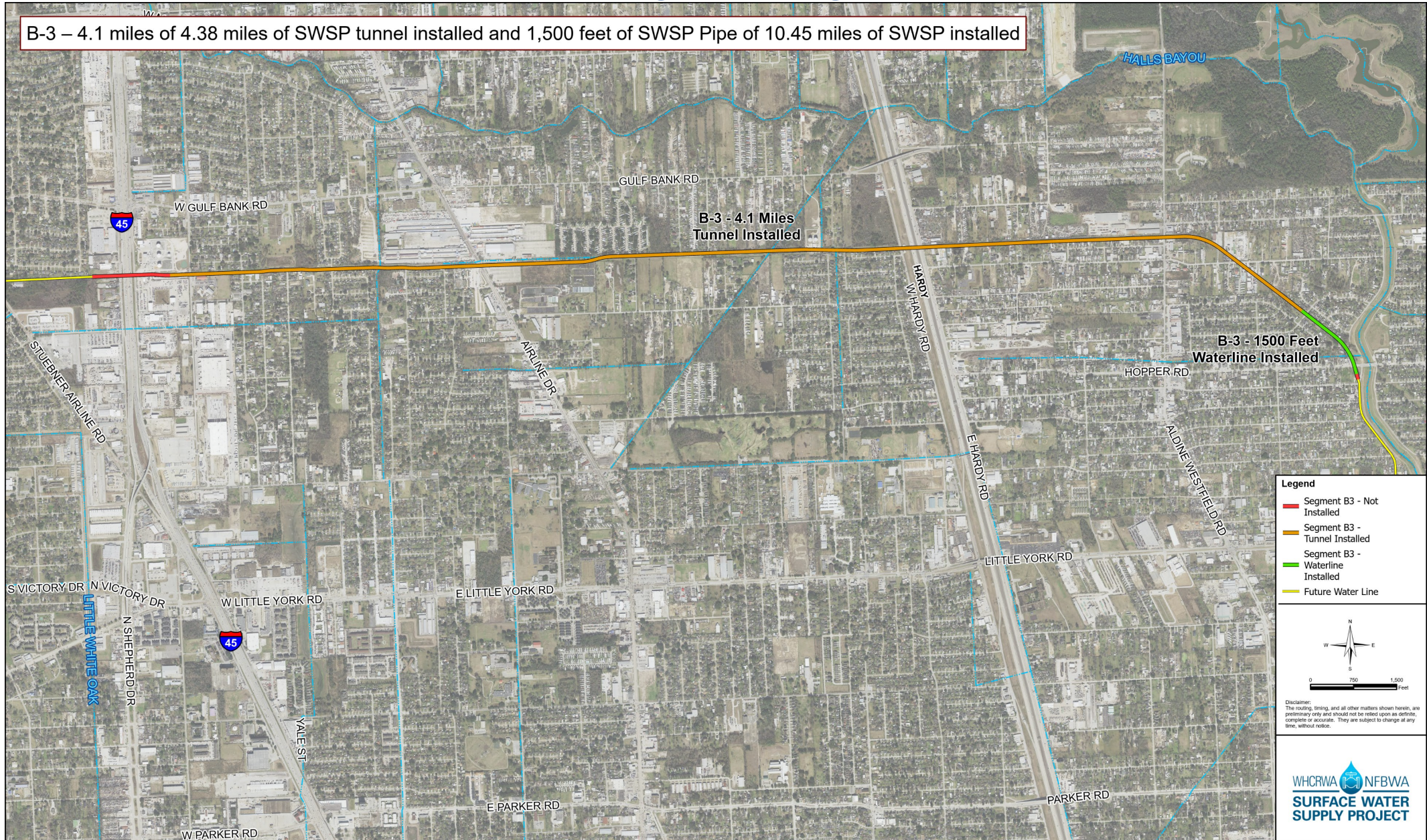
Disclaimer: The routing, timing, and all other matters shown herein, are preliminary only and should not be relied upon as definite, complete or accurate. They are subject to change at any time, without notice.



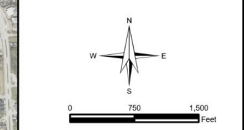


# Construction Progress – Segment B3

B-3 – 4.1 miles of 4.38 miles of SWSP tunnel installed and 1,500 feet of SWSP Pipe of 10.45 miles of SWSP installed



- Legend**
- Segment B3 - Not Installed
  - Segment B3 - Tunnel Installed
  - Segment B3 - Waterline Installed
  - Future Water Line

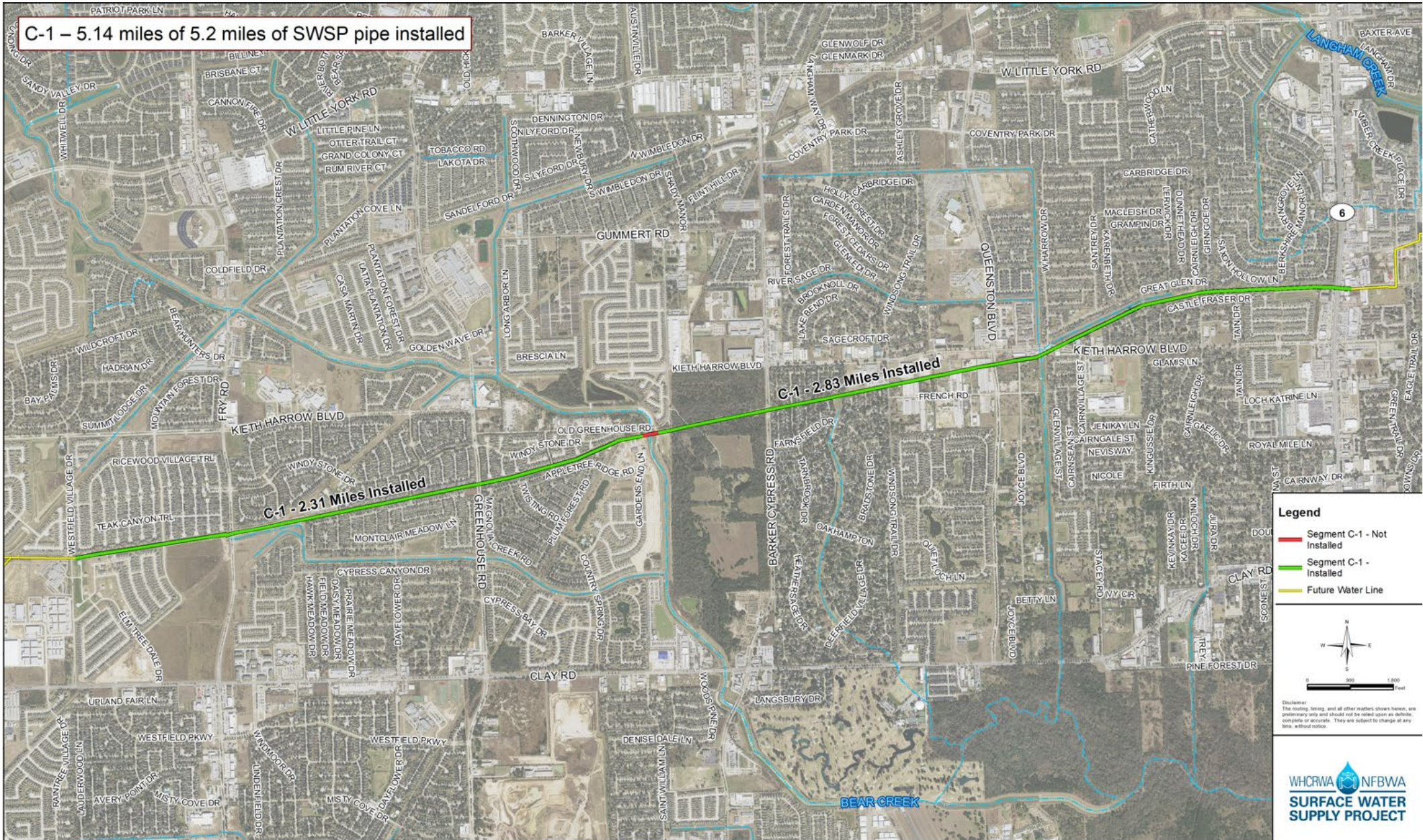


Disclaimer:  
The routing, timing, and all other matters shown herein, are preliminary only and should not be relied upon as definite, complete or accurate. They are subject to change at any time, without notice.





# Construction Progress – Segment C1



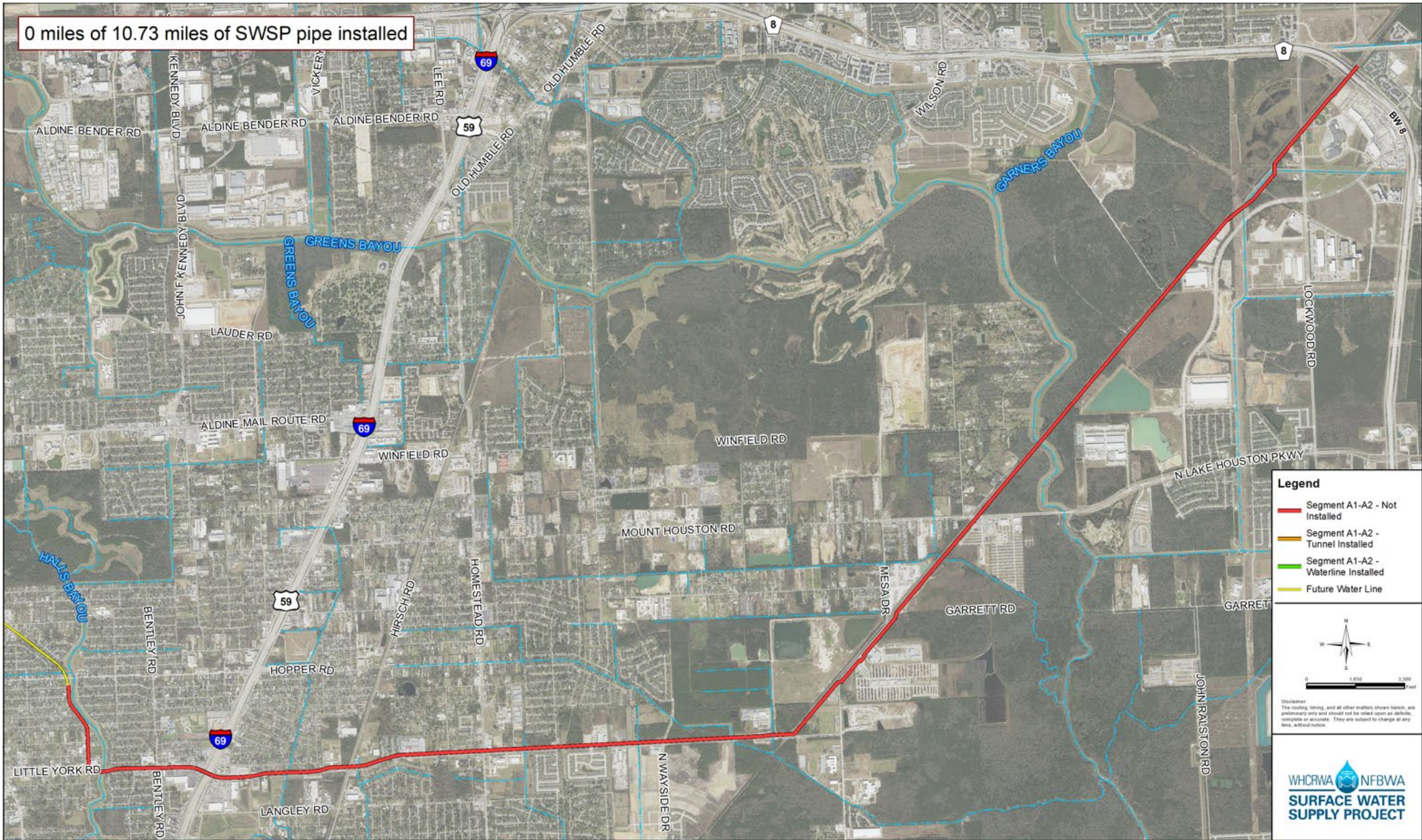


# Construction Progress – Segment C2





# Construction Progress – Segment A1-A2



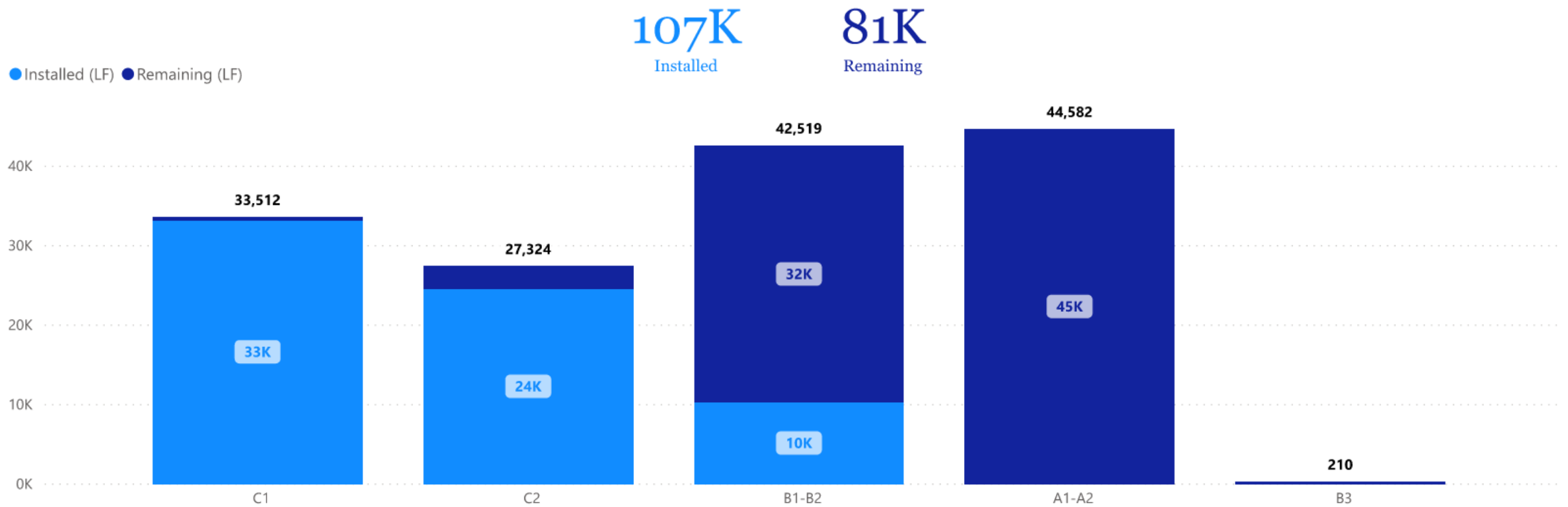




WHCRWA NFBWA  
**SURFACE WATER  
 SUPPLY PROJECT**

## Open Cut (LF) by Project

Project ID	Bid Quantity (LF)
S3-A4	9,882
S3-A3	5,670
S3-A2	11,402
S3-A1	12,750
CPS	0
C2	27,324
C1	33,512
B3	210
B1-B2	42,519
A1-A2	44,582
<b>Total</b>	<b>187,851</b>



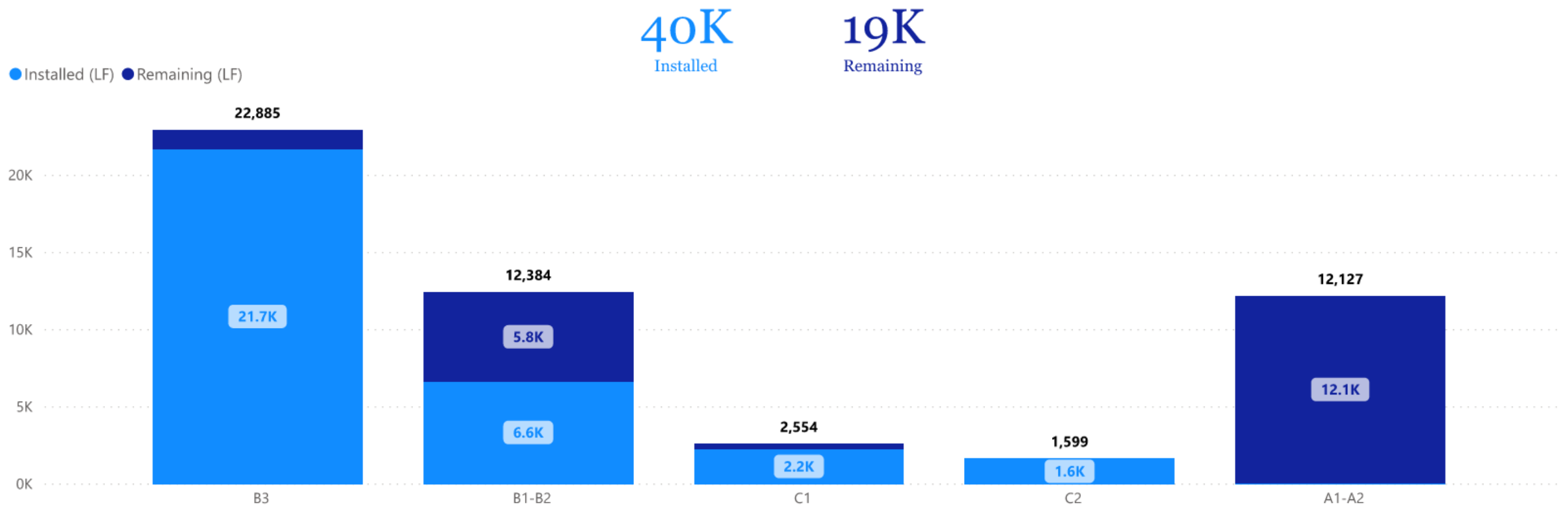


WHCRWA  NFBWA

# SURFACE WATER SUPPLY PROJECT

Project ID	Bid Quantity (LF)
A1-A2	12,127
B1-B2	12,384
B3	22,885
C1	2,554
C2	1,599
S3-A1	1,270
S3-A2	2,626
S3-A3	3,076
S3-A4	1,198
<b>Total</b>	<b>59,719</b>

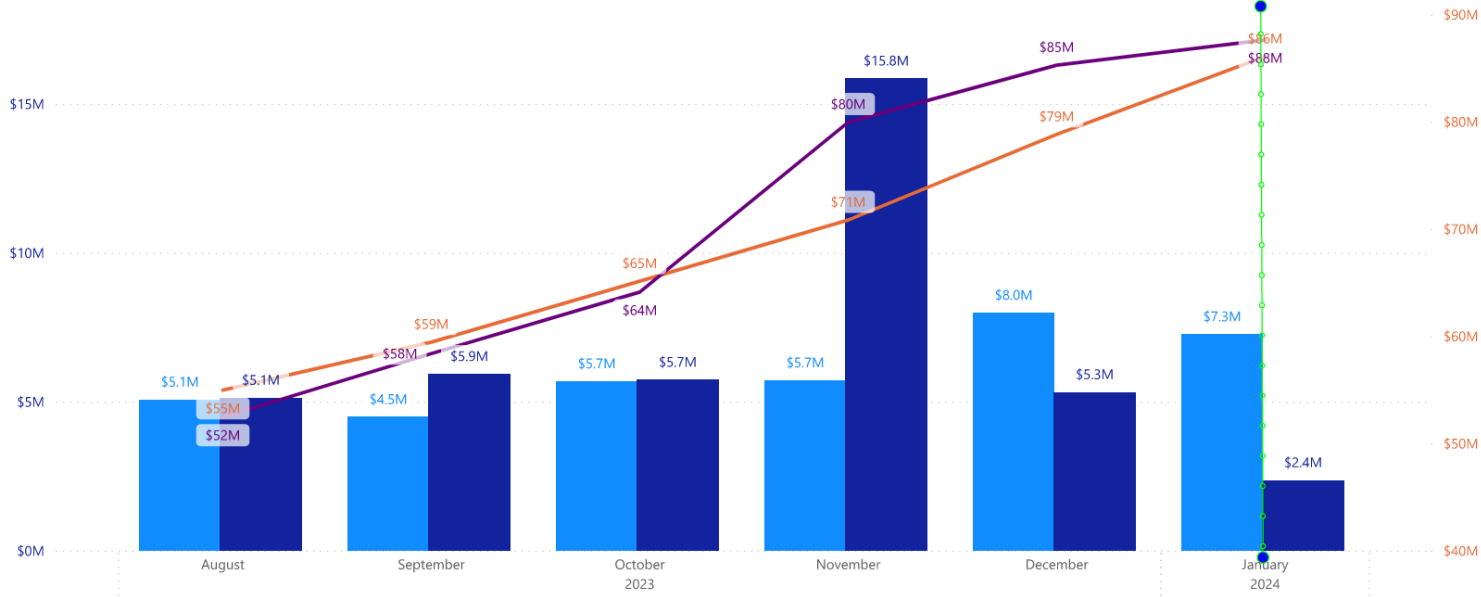
## Tunneling (LF) by Project





### Segments B1|B2

Planned Value (PV) Earned Value (EV) Cum PV Cum EV



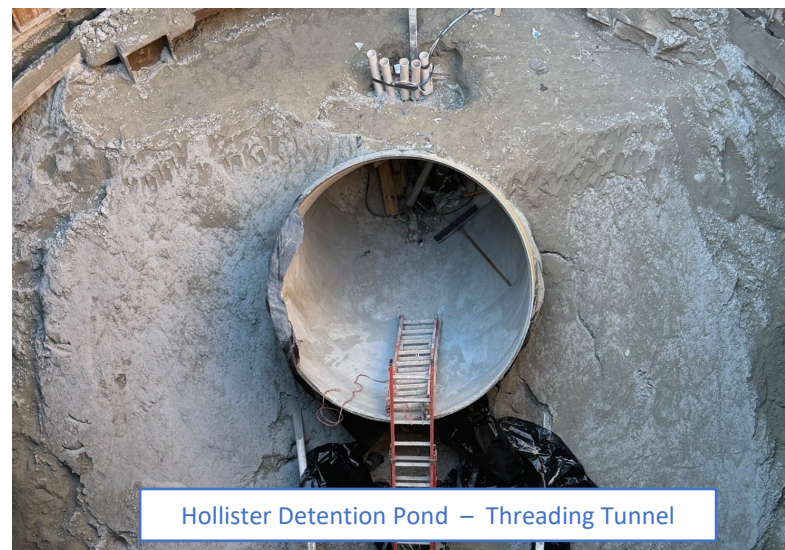
# SWSP Segment B1-B2



Sam Houston TR – Exit Shaft Construction



Gulf Bank – Fabrication on Tail Tunnel

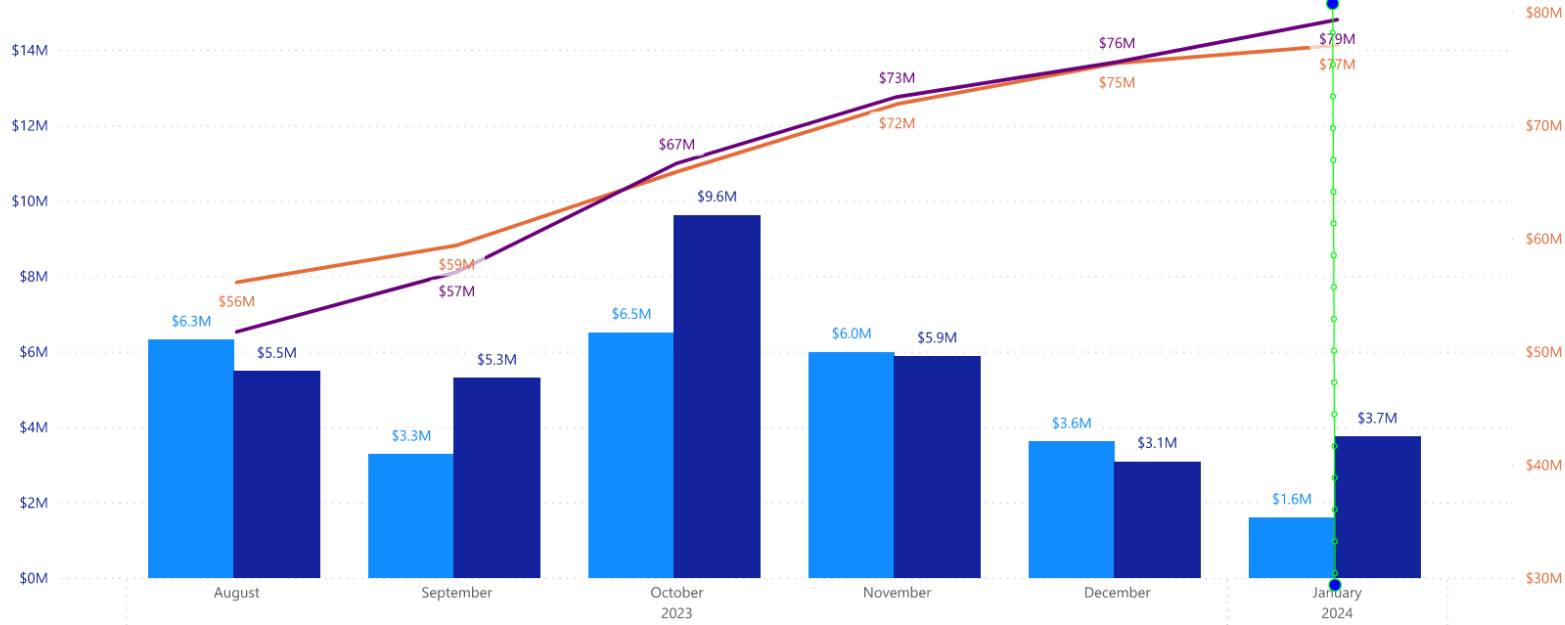


Hollister Detention Pond – Threading Tunnel



## Segment B3

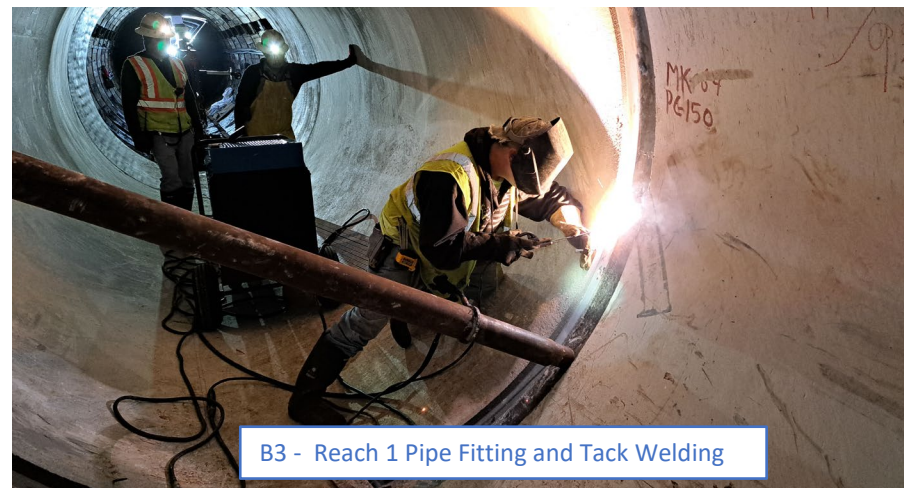
Planned Value (PV) Earned Value (EV) Cum PV Cum EV



B3 – Reach 1 Pipe Installation



B3 – Reach 1 Pipe Lowering



B3 - Reach 1 Pipe Fitting and Tack Welding



Project Name

Segment C1

8/25/2023 1/25/2024

### Segment C1



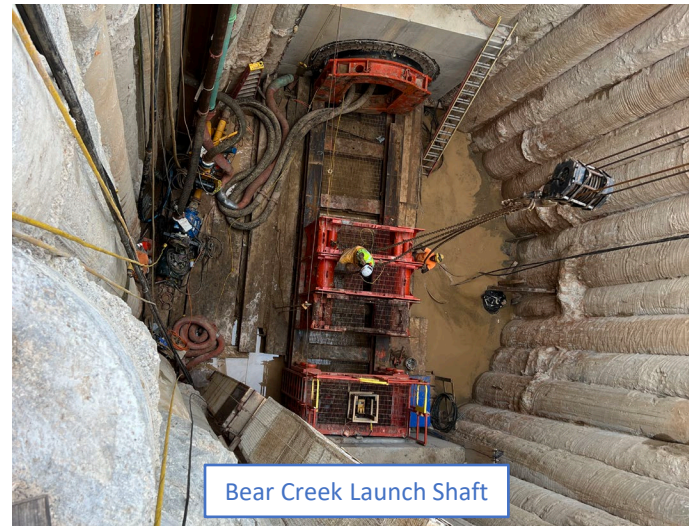
# SWSP Segment C1



Bear Creek Tunnel Machine



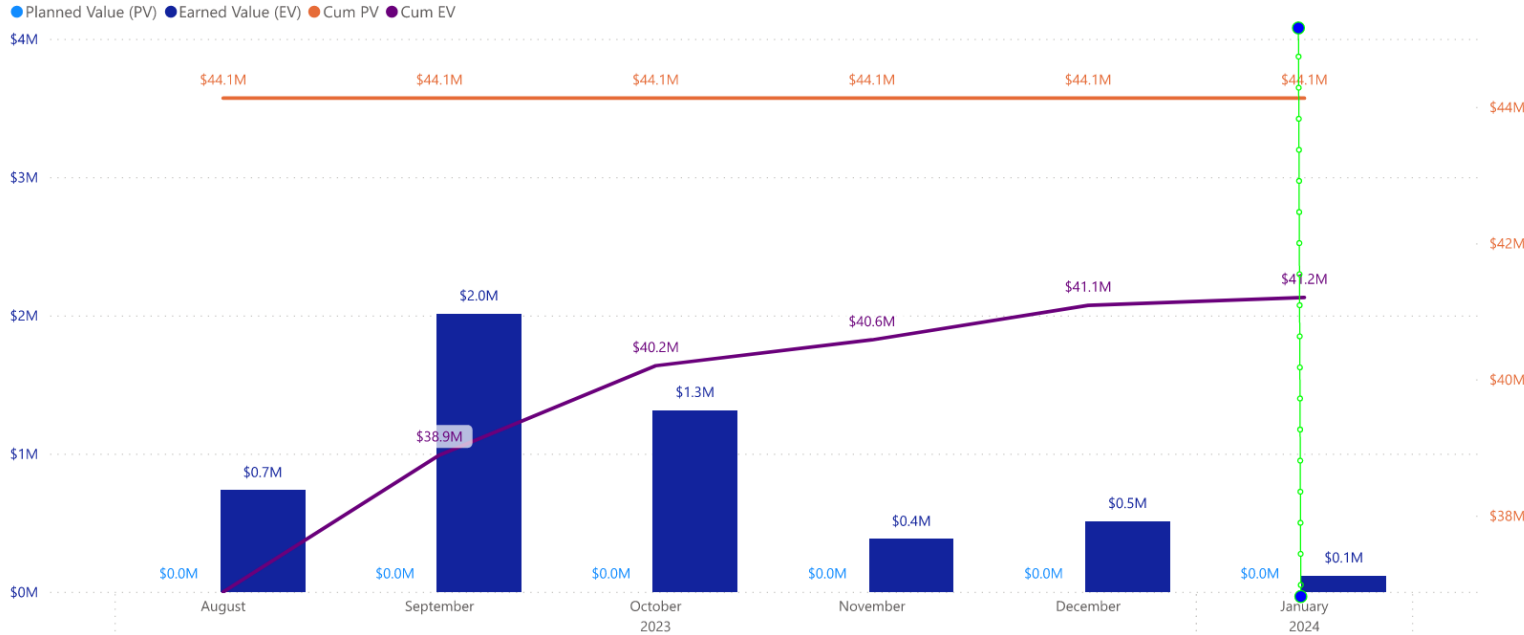
Fry Rd. – Manhole Finish Out



Bear Creek Launch Shaft



### Segment C2



# SWSP Segment C2



Restoration Along Kirwin Dr



Fencing Installed at BFV

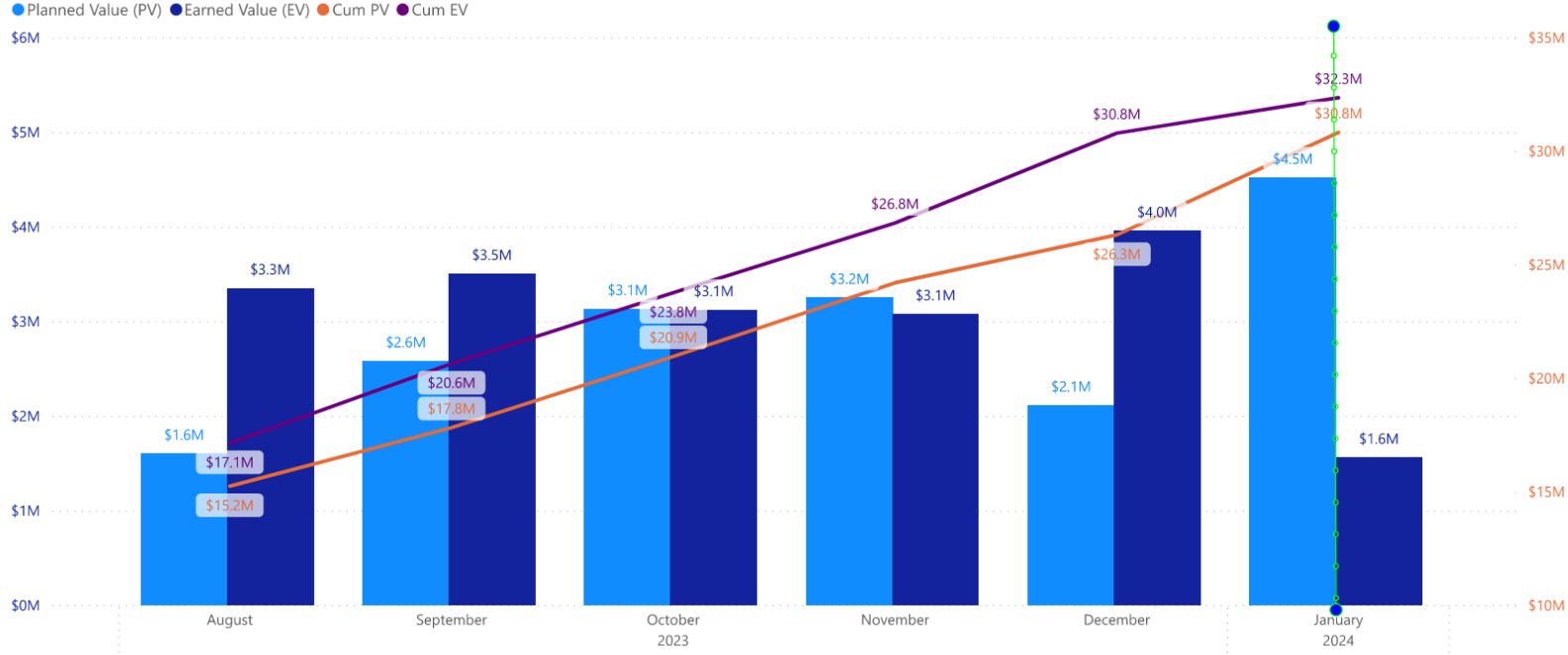


Sump Pump Installed at 84-Inch BFV





# Central Pump Station



# SWSP Central Pump Station



GST 2 Scaffolding



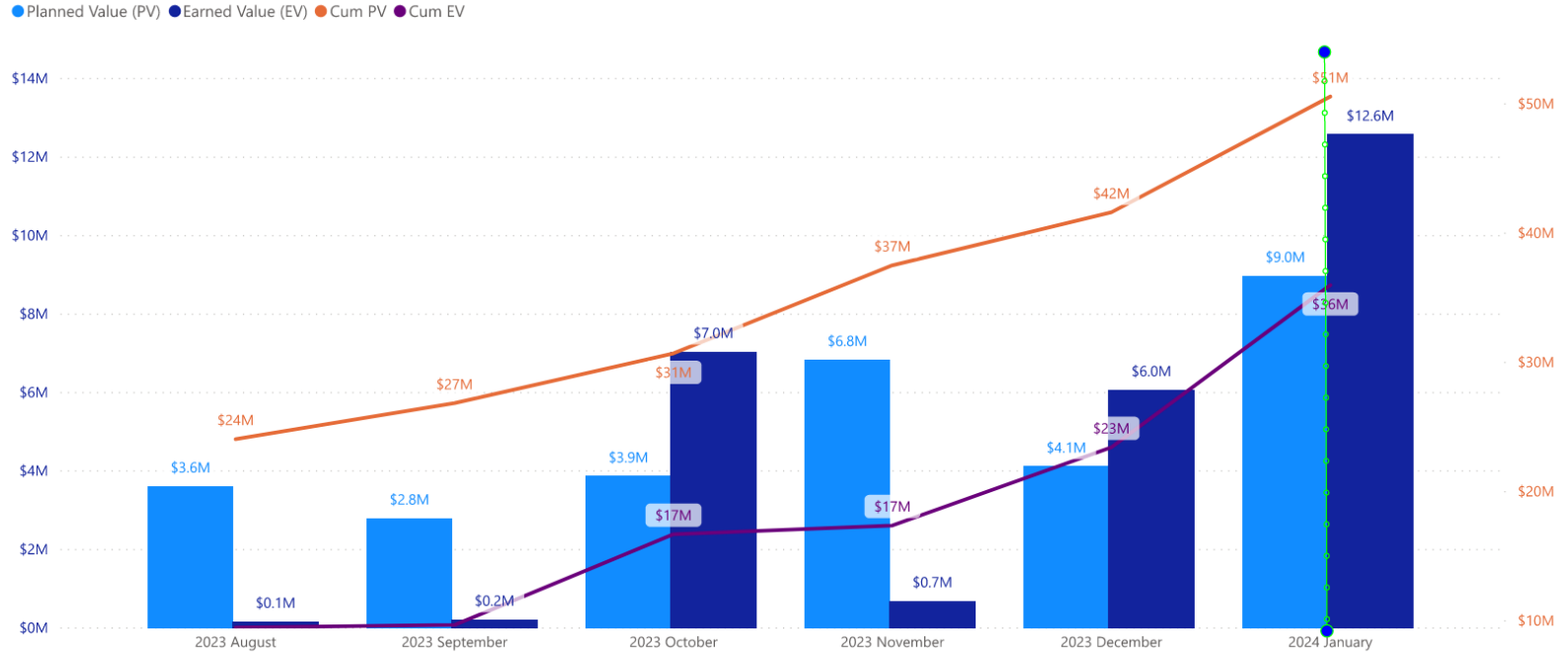
Chemical Building



High Service Pump Station



## Segments A1|A2



# SWSP Segment A1-A2

