

# February 2024 Monthly Construction Status Report

Updated: 03.06.2024



## WHCRWA Ongoing Surface Water Supply Projects

### Segment B1-B2

3 MILES OF 84-INCH DIAMETER AND 8 MILES OF 96-INCH WATERLINES FROM WEST OF BRITTMOORE ROAD TO WEST OF I-45

### Segment B3

4.4 MILES OF 96-INCH DIAMETER WATER LINES FROM WEST OF I-45 TO THE SOUTH SIDE OF HOPPER RD. VIA TUNNEL

### Segment 3 - A1 to Segment 3 – A3 (3 Projects)

7 MILES OF 42-INCH WATER LINE ALONG CENTERPOINT ENERGY CORRIDOR FROM NORTH OF LAKESIDE FOREST LN TO SEGMENT C

### Segment C1

5 MILES OF 84-INCH, 66-INCH, AND 36-INCH WATER LINE FROM WESTFIELD VILLAGE DRIVE TO HIGHWAY 6

### Segment C2

5 MILES OF 84-INCH WATER LINE FROM HIGHWAY 6 TO BRITTMOORE RD.

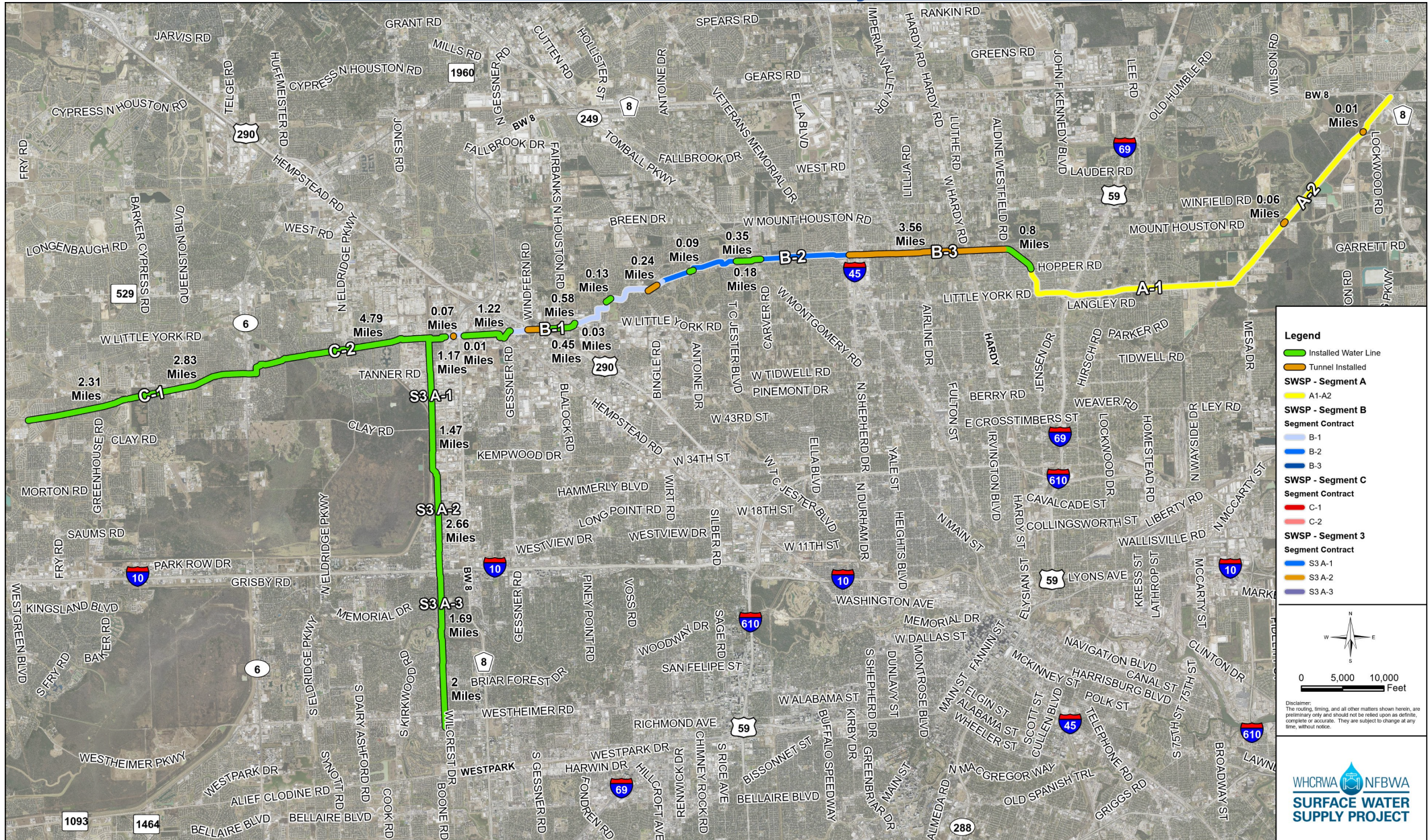
### Central Pump Station

CONSTRUCTION OF A CENTRAL PUMP STATION THAT WILL RECEIVE WATER FROM THE RE-PUMP STATION AND THEN TRANSFER WATER TO MUDS

### Segment A1-A2

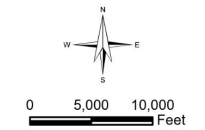
11 MILES OF 96-INCH WATER LINE FROM HOPPER RD. TO THE WHCRWA METER STATION NEAR THE NEWPP

# Current SWSP Construction Projects Overview



**Legend**

- Installed Water Line
- Tunnel Installed
- SWSP - Segment A**
- A1-A2
- SWSP - Segment B**
- Segment Contract
- B-1
- B-2
- B-3
- SWSP - Segment C**
- Segment Contract
- C-1
- C-2
- SWSP - Segment 3**
- Segment Contract
- S3 A-1
- S3 A-2
- S3 A-3

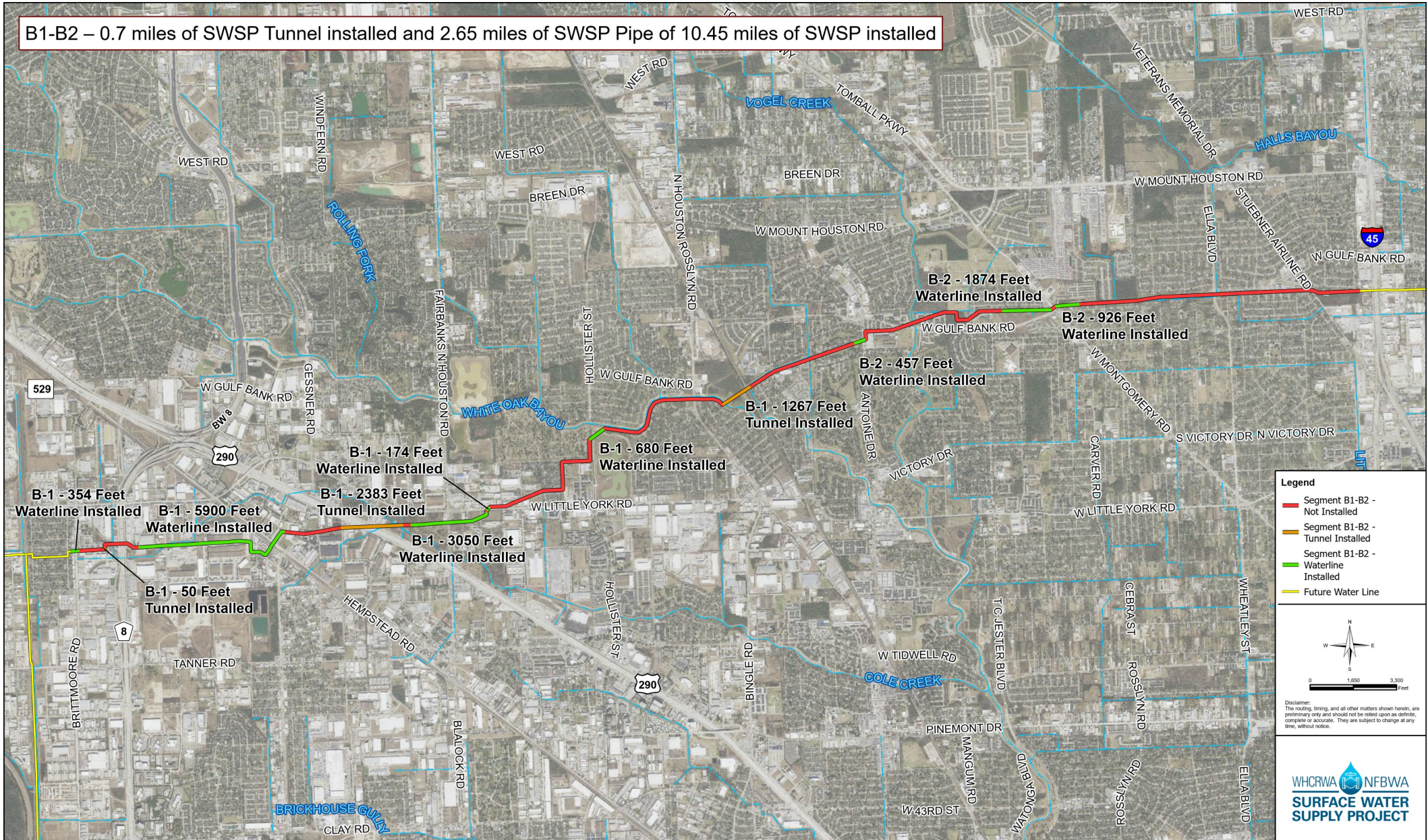


Disclaimer:  
The routing, timing, and all other matters shown herein, are preliminary only and should not be relied upon as definite, complete or accurate. They are subject to change at any time, without notice.



# Construction Progress – Segment B1-B2

B1-B2 – 0.7 miles of SWSP Tunnel installed and 2.65 miles of SWSP Pipe of 10.45 miles of SWSP installed



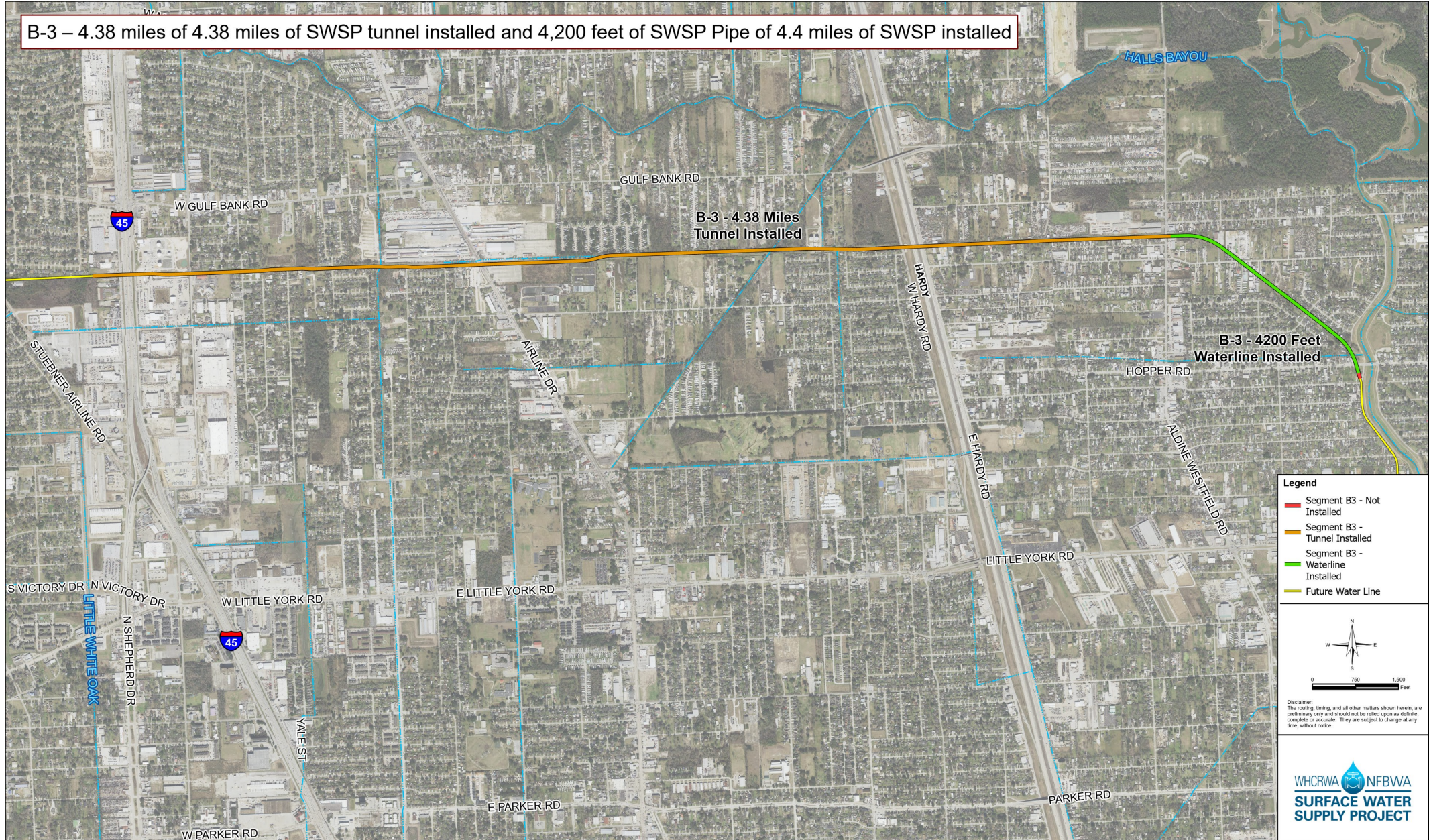
**Legend**

- Segment B1-B2 - Not Installed
- Segment B1-B2 - Tunnel Installed
- Segment B1-B2 - Waterline Installed
- Future Water Line

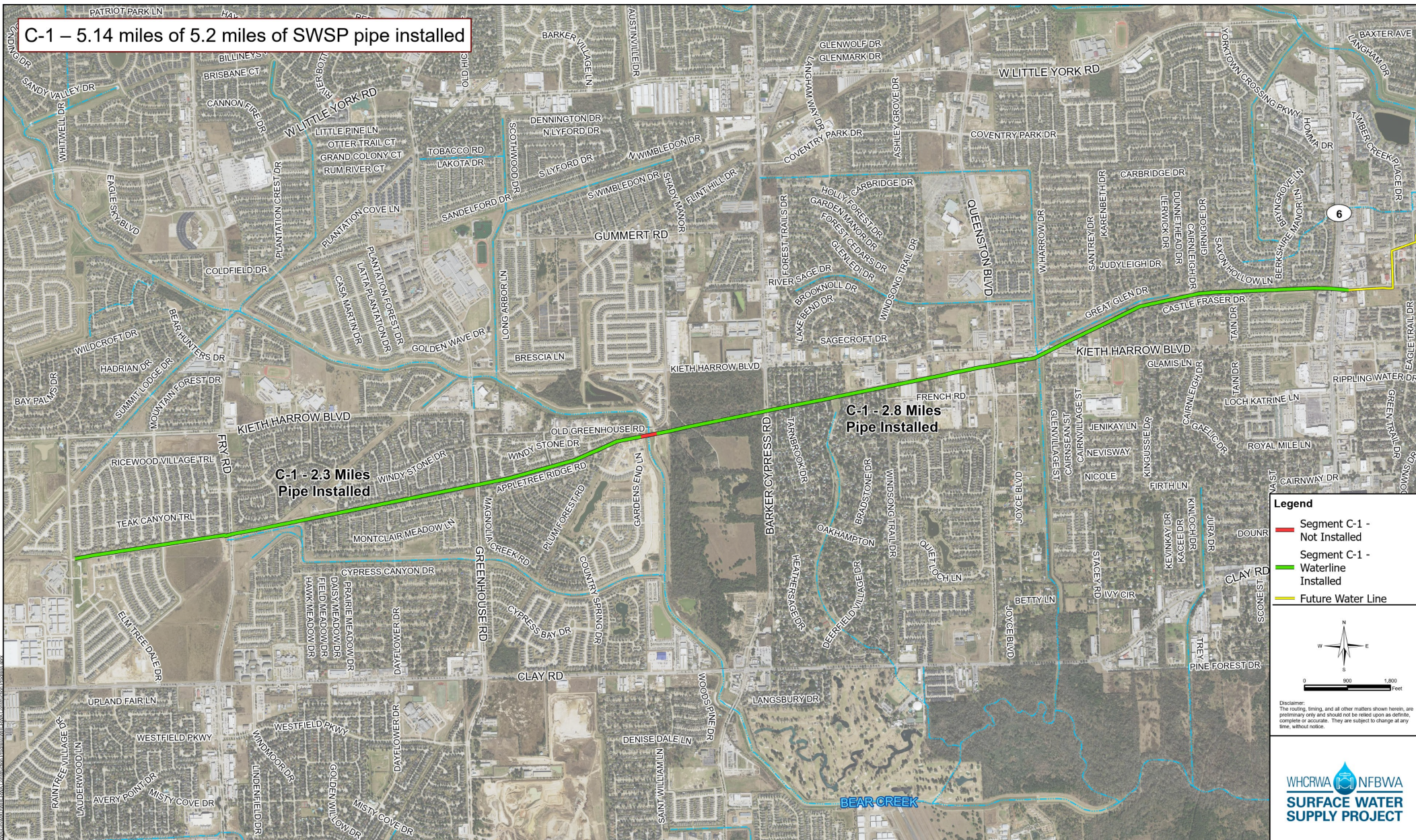
Disclaimer: The routing, timing, and all other matters shown herein, are preliminary only and should not be relied upon as definite, complete or accurate. They are subject to change at any time, without notice.

# Construction Progress – Segment B3

B-3 – 4.38 miles of 4.38 miles of SWSP tunnel installed and 4,200 feet of SWSP Pipe of 4.4 miles of SWSP installed



# Construction Progress – Segment C1

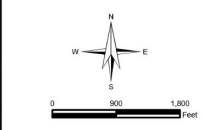


C-1 – 5.14 miles of 5.2 miles of SWSP pipe installed

C-1 - 2.3 Miles Pipe Installed

C-1 - 2.8 Miles Pipe Installed

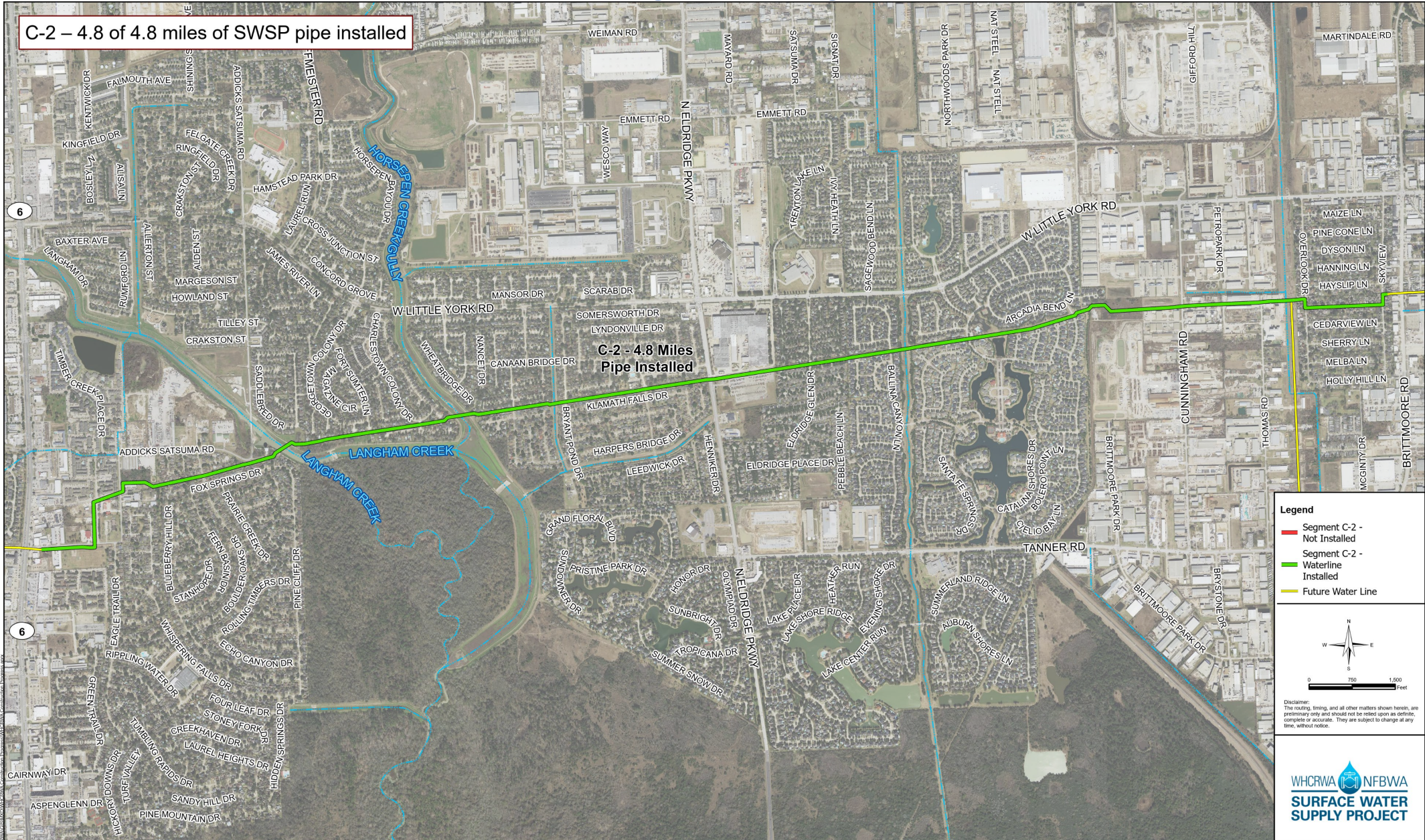
- Legend**
- Segment C-1 - Not Installed
  - Segment C-1 - Waterline Installed
  - Future Water Line



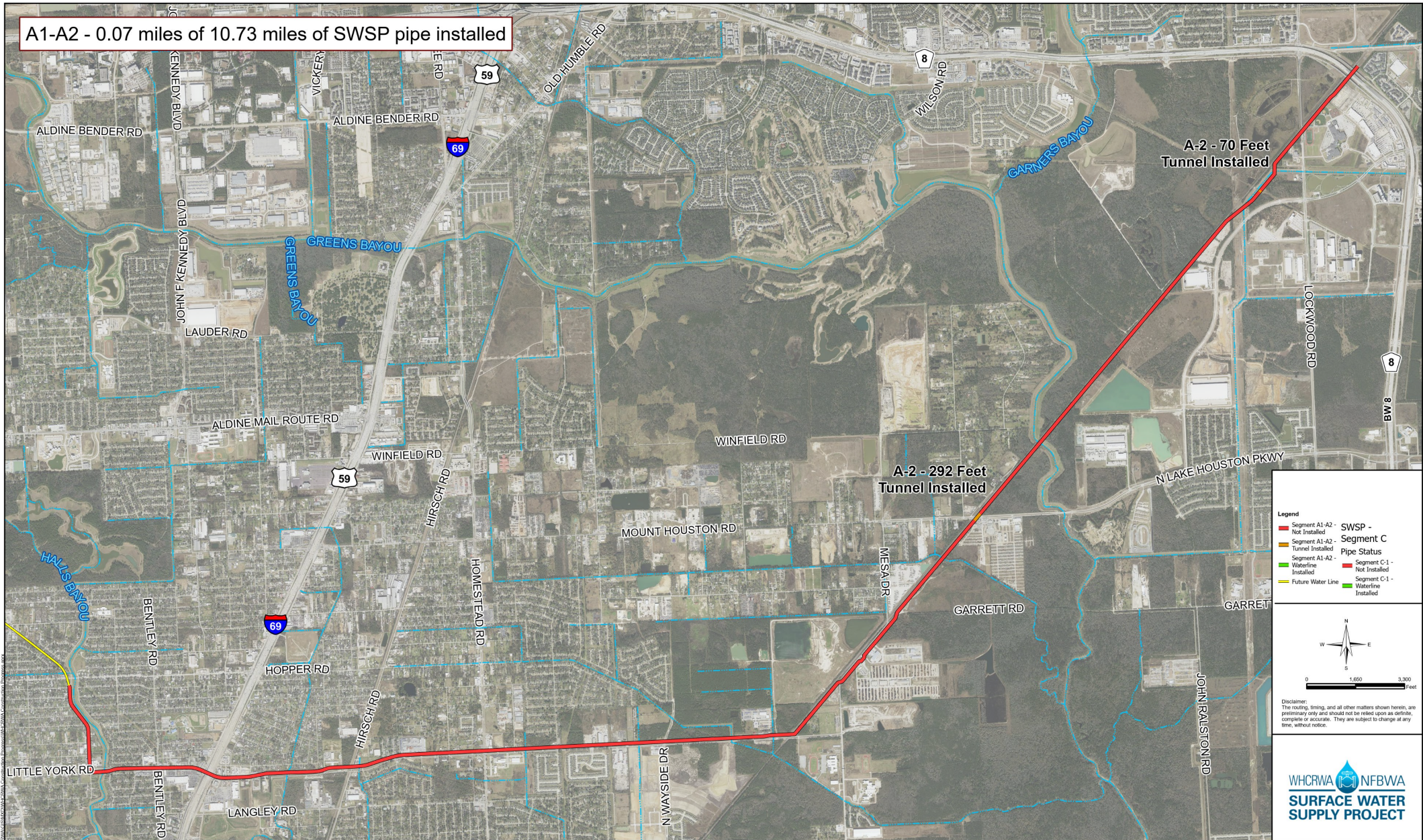
Disclaimer: The routing, timing, and all other matters shown herein, are preliminary only and should not be relied upon as definite, complete or accurate. They are subject to change at any time, without notice.



# Construction Progress – Segment C2



# Construction Progress – Segment A1-A2

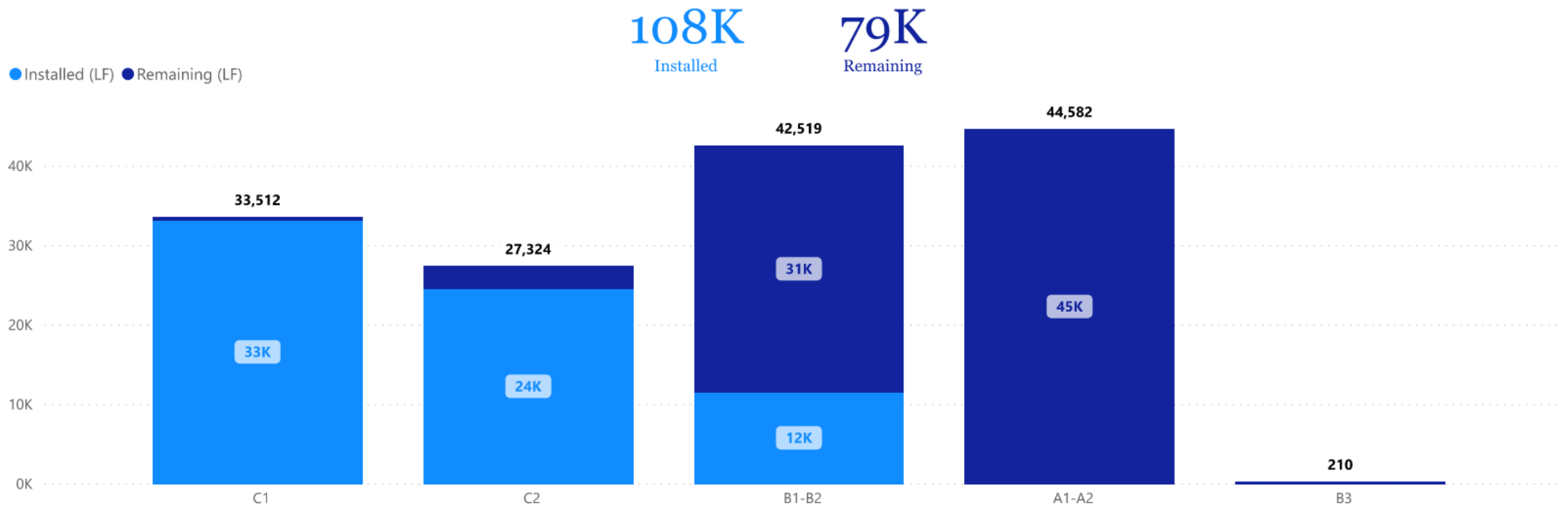




WHCRWA NFBWA  
**SURFACE WATER  
 SUPPLY PROJECT**

## Open Cut (LF) by Project

Project ID	Bid Quantity (LF)
S3-A4	9,882
S3-A3	5,670
S3-A2	11,402
S3-A1	12,750
CPS	0
C2	27,324
C1	33,512
B3	210
B1-B2	42,519
A1-A2	44,582
<b>Total</b>	<b>187,851</b>



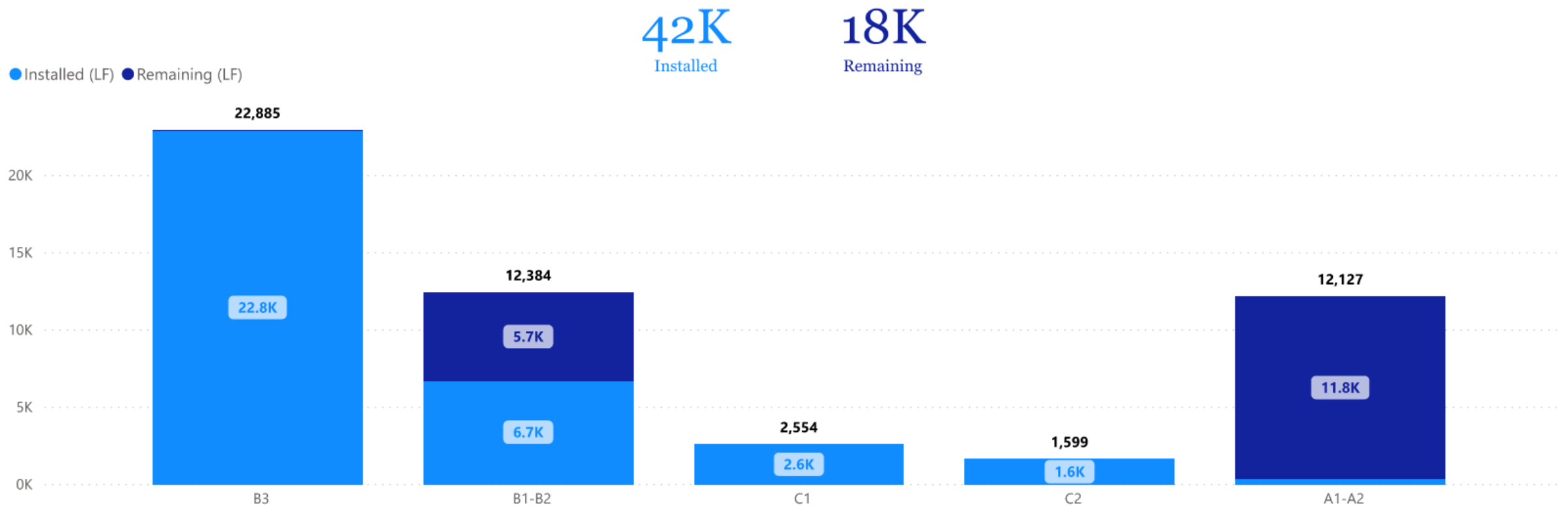


WHCRWA  NFBWA

# SURFACE WATER SUPPLY PROJECT

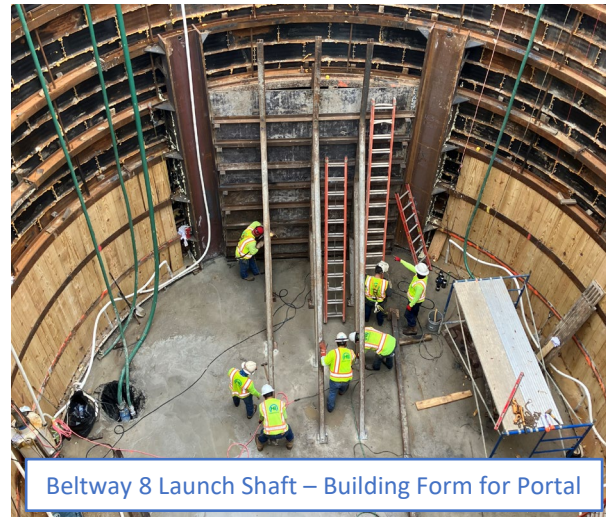
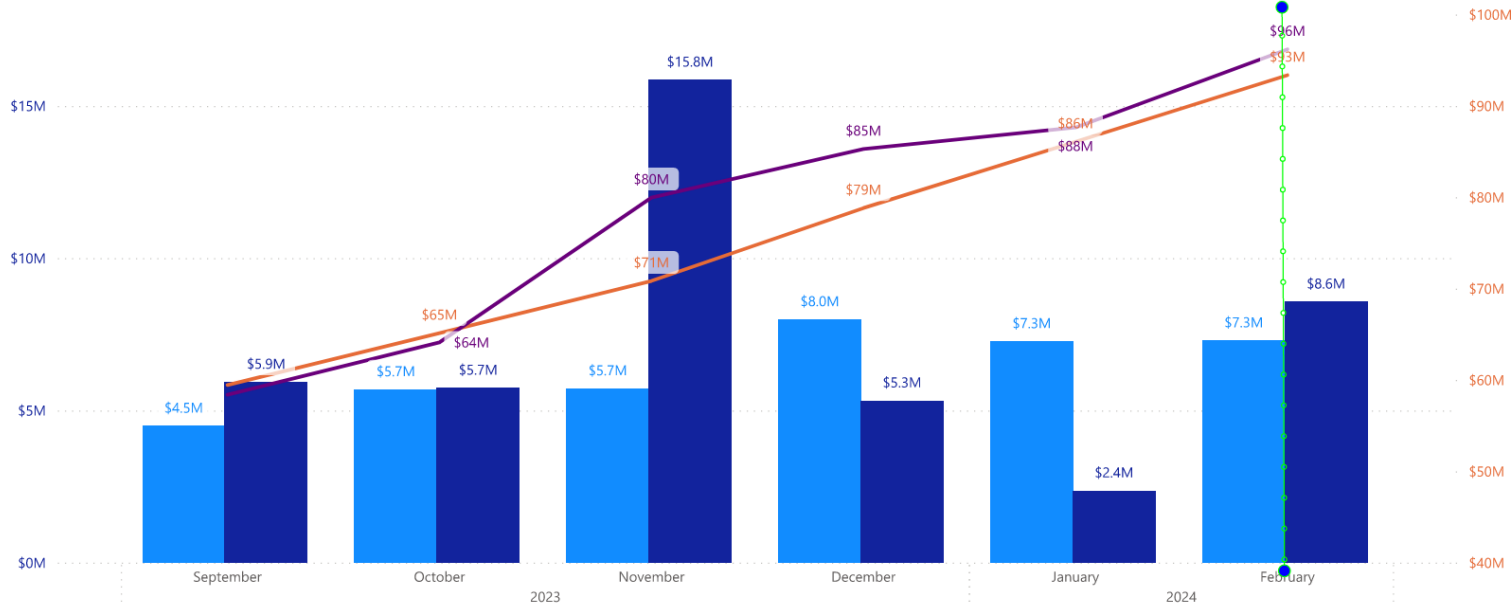
## Tunneling (LF) by Project

Project ID	Bid Quantity (LF)
A1-A2	12,127
B1-B2	12,384
B3	22,885
C1	2,554
C2	1,599
S3-A1	1,270
S3-A2	2,626
S3-A3	3,076
S3-A4	1,198
<b>Total</b>	<b>59,719</b>



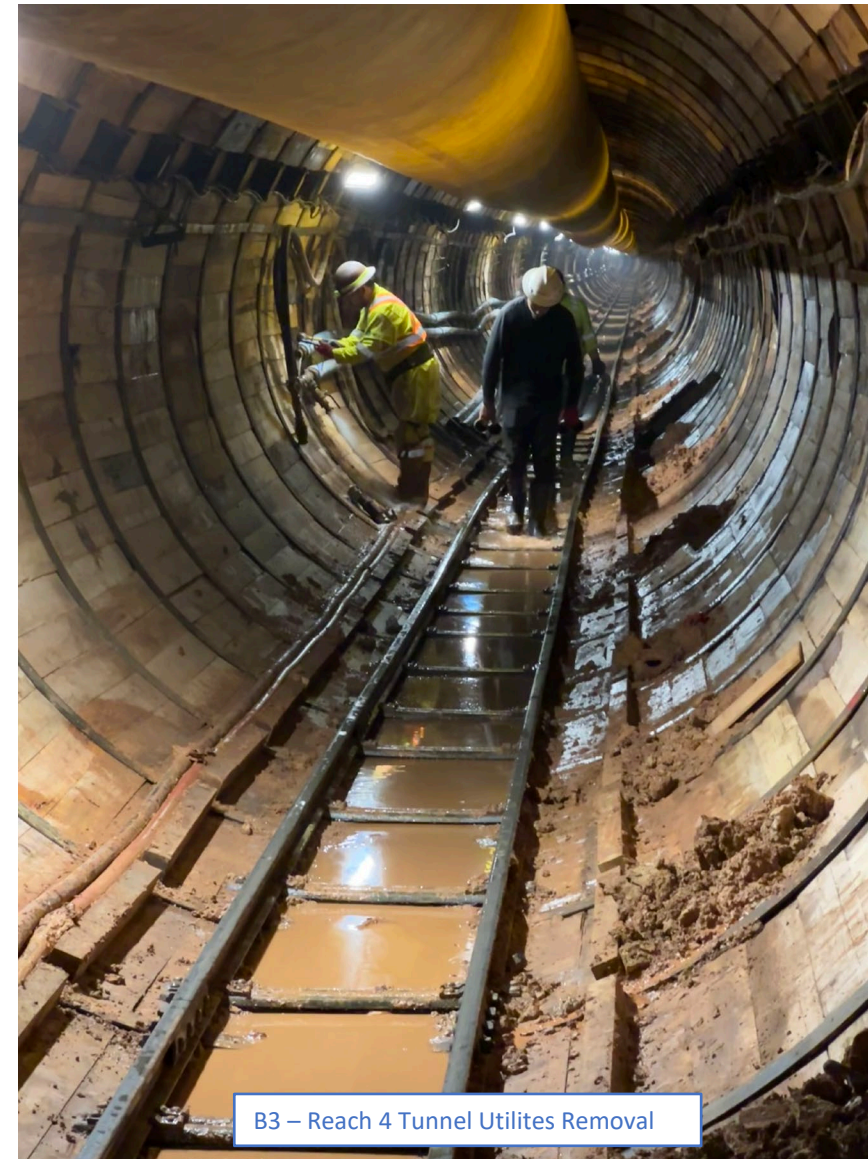
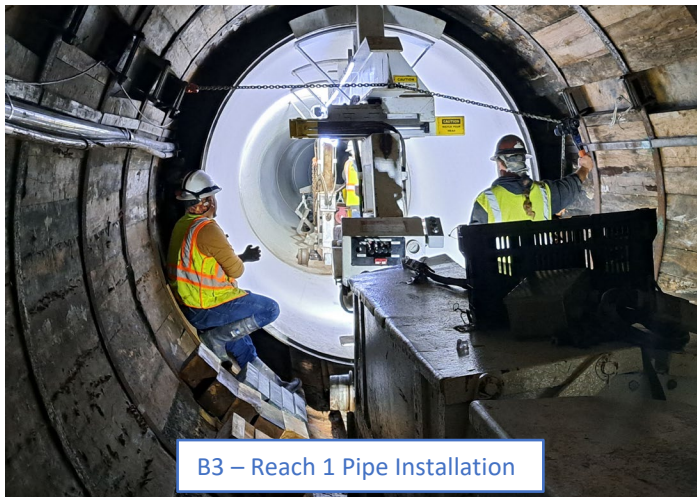
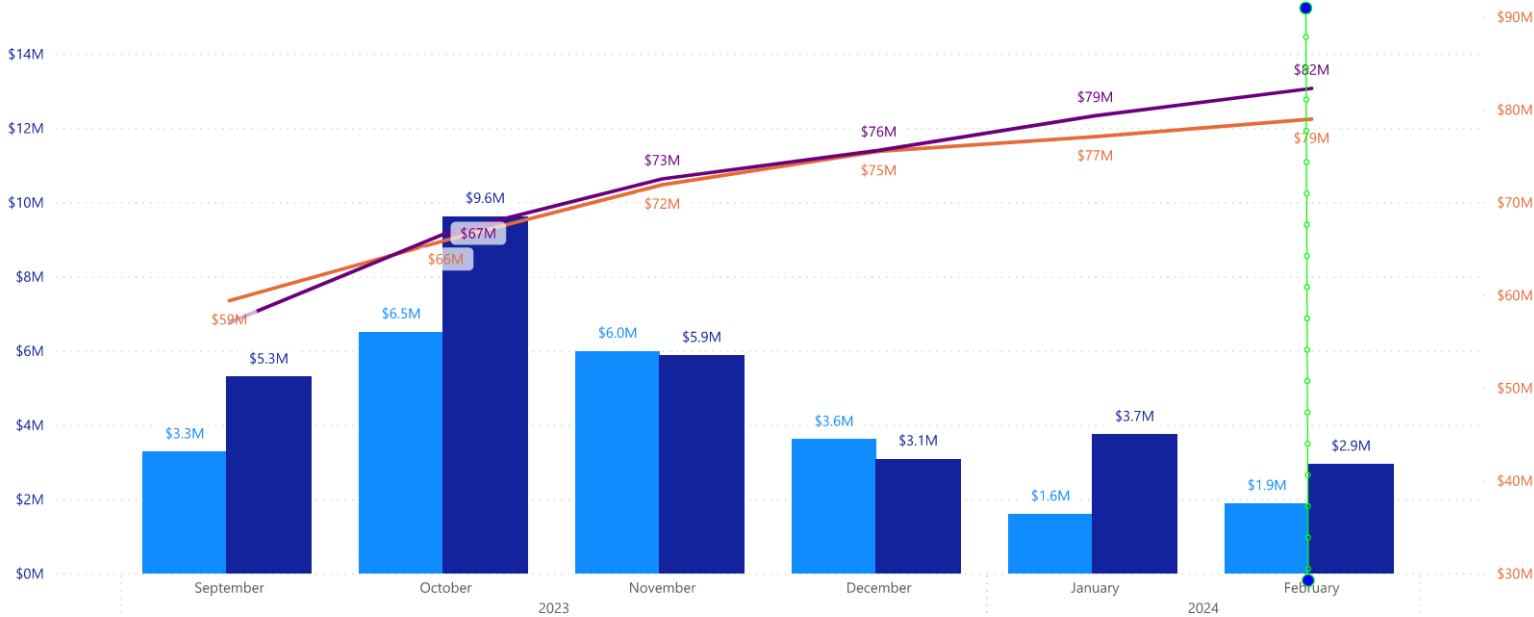
## Segments B1|B2

Planned Value (PV) Earned Value (EV) Cum PV Cum EV

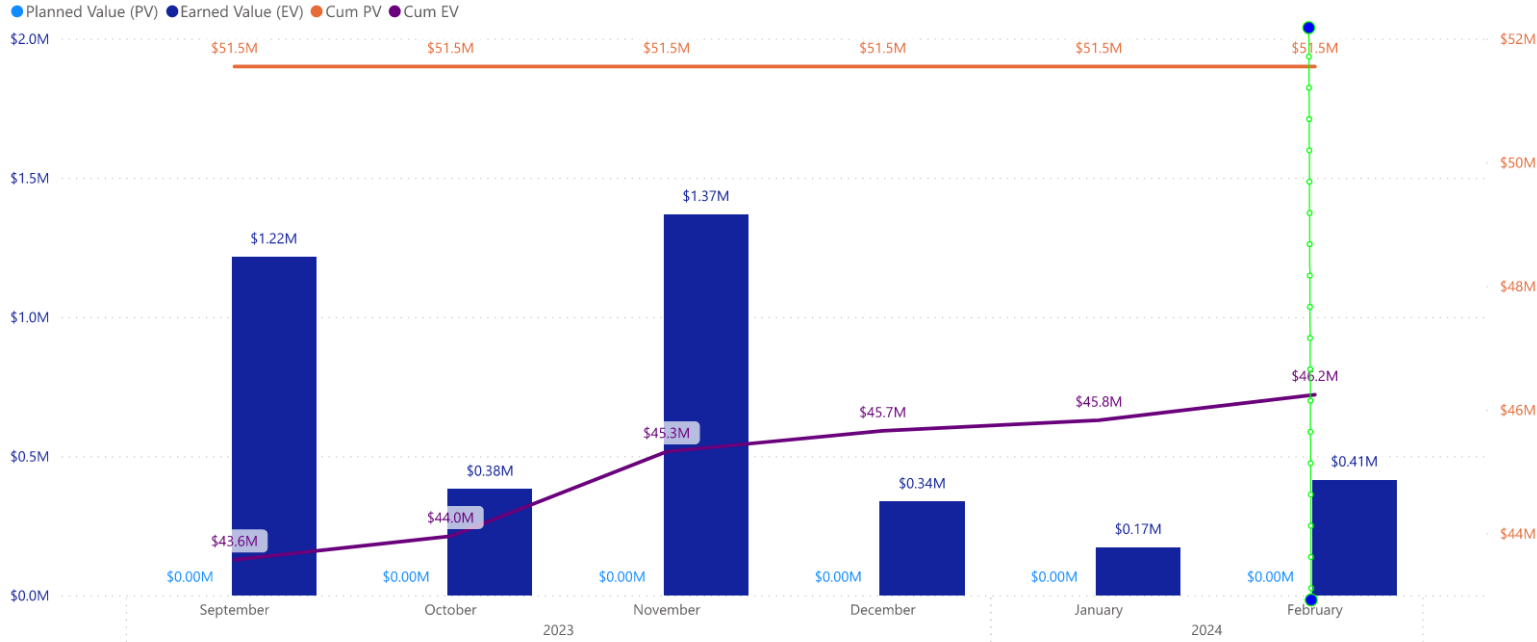


## Segment B3

Planned Value (PV) Earned Value (EV) Cum PV Cum EV



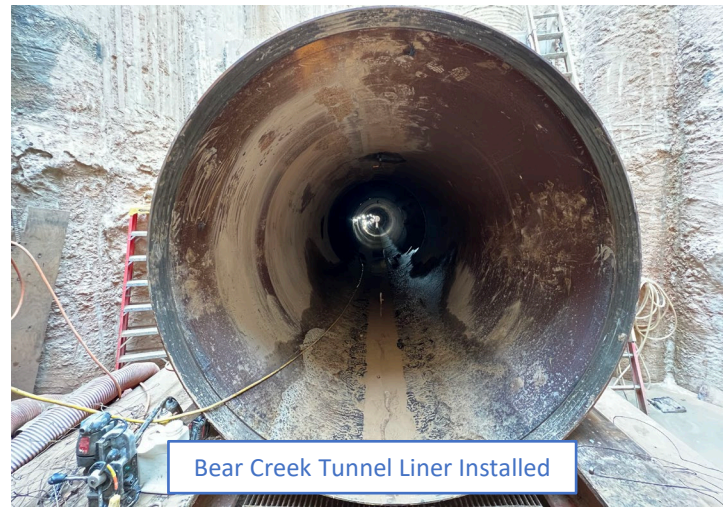
### Segment C1



# SWSP Segment C1



Installing Pipeline Markers



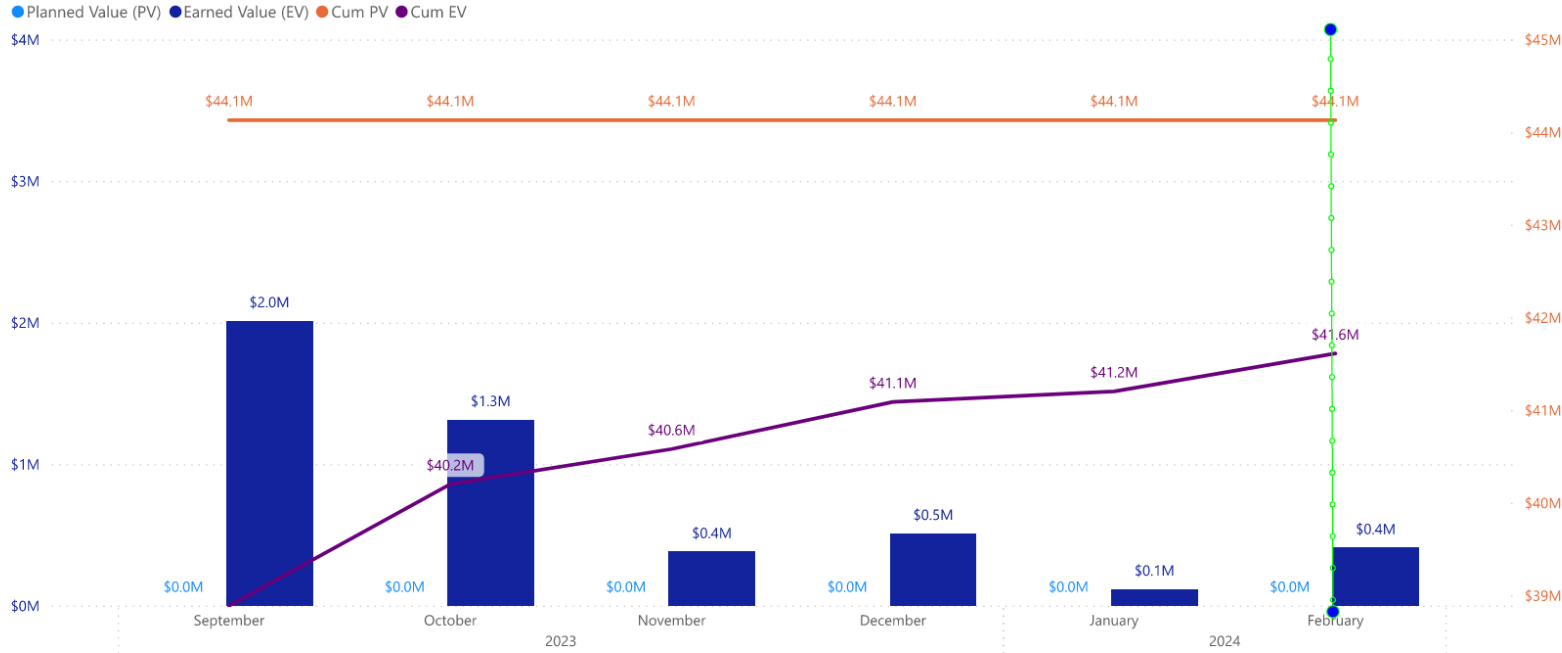
Bear Creek Tunnel Liner Installed



Bear Creek Tunnel Machine Break Through



## Segment C2



Black Base Applied Along Kirwin Dr.



Restoration Complete Along Kirwin Dr.

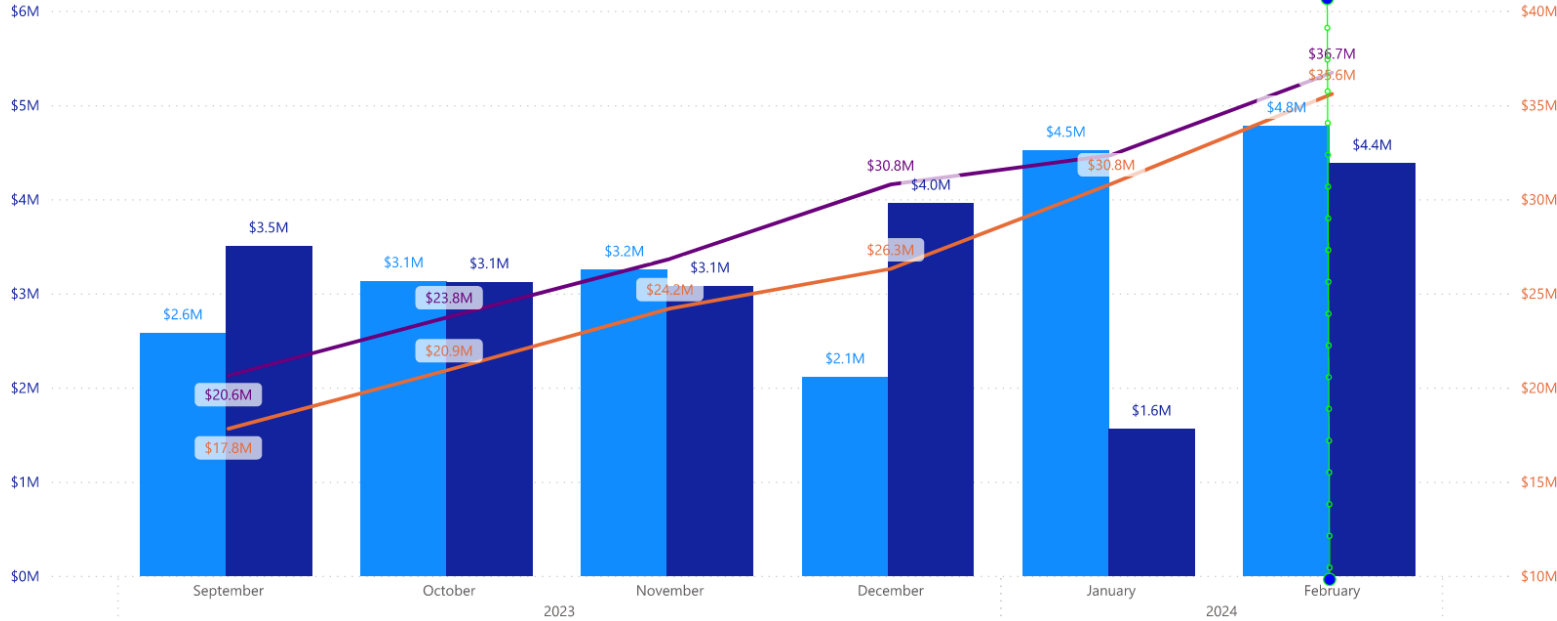


Fencing Installed at Spruce Point



# Central Pump Station

● Planned Value (PV) ● Earned Value (EV) ● Cum PV ● Cum EV



# SWSP Central Pump Station



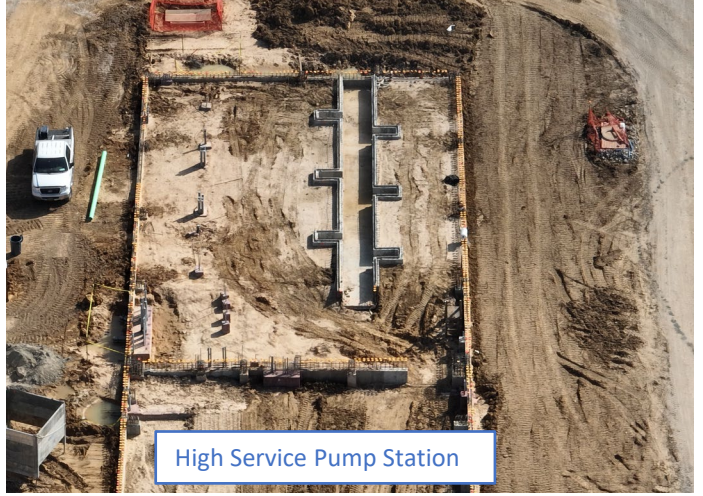
GST 2 Scaffolding and Casting Beds



Chemical Building



Operations Building Foundation

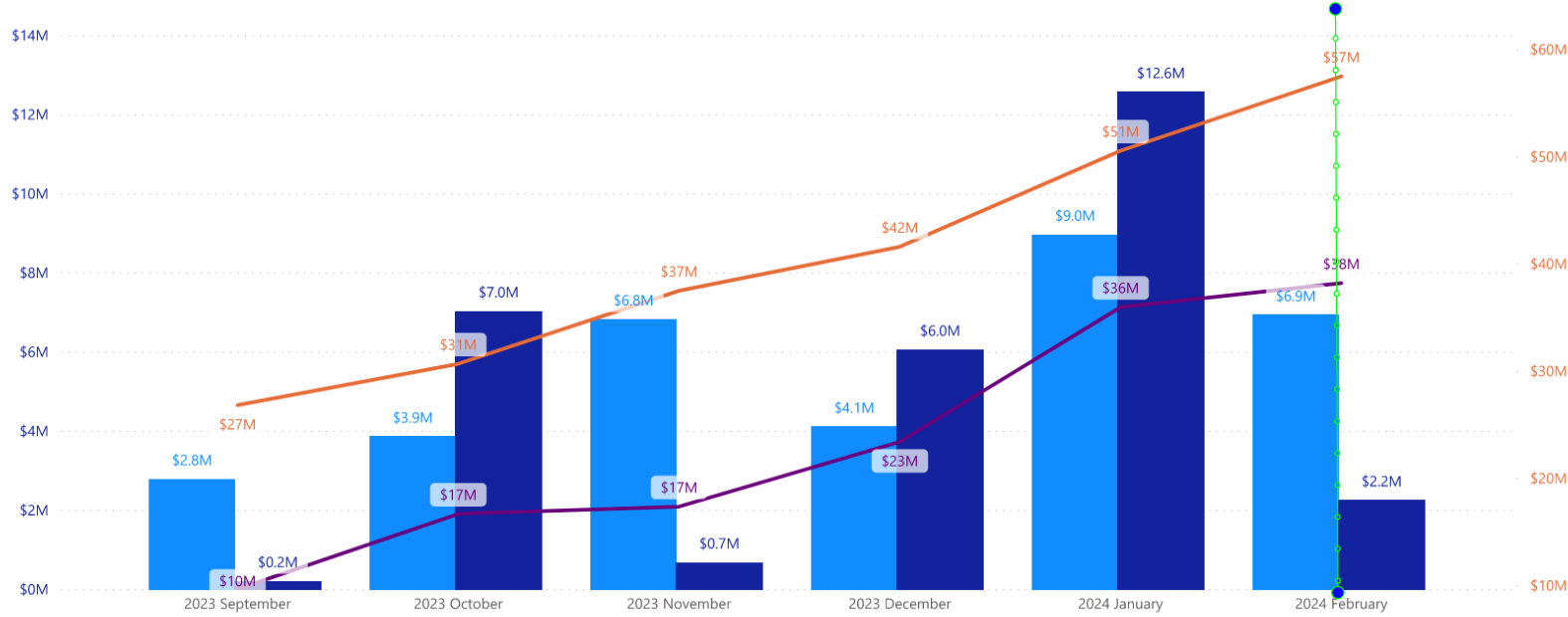


High Service Pump Station



## Segments A1|A2

Planned Value (PV) Earned Value (EV) Cum PV Cum EV



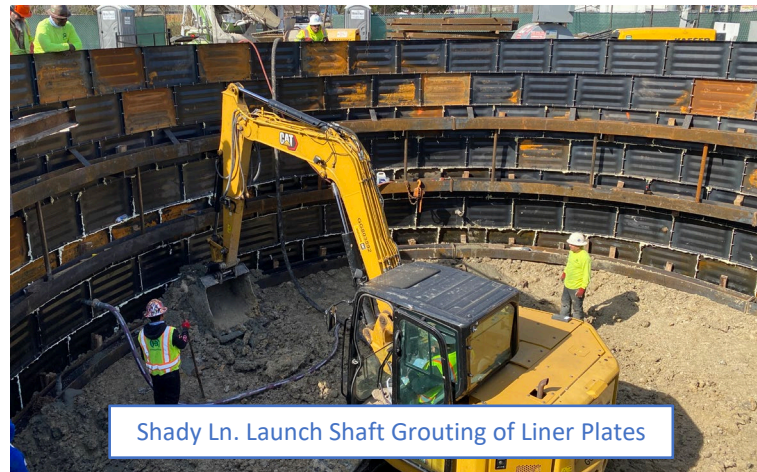
# SWSP Segment A1-A2



Digger Shield in E. Mount Houston Tunnel Receiving Shaft



First Delivery of 96-in Waterline Pipe



Shady Ln. Launch Shaft Grouting of Liner Plates



Installing Steel Piles for Mesa Dr. Tunnel Launch Shaft